

INSTALLATION INSTRUCTIONS

DRAG SPECIALTIES HANDLEBAR SWITCH CAPS P/N 0616-0152

ATTENTION INSTALLER (if other than owner): Please forward this instruction sheet to the purchaser of this product. These instructions contain valuable information necessary to the end user.

INTRODUCTION: These instructions describe the procedure for properly installing the chrome switch caps on 2011 Softail models.

Review instructions carefully before beginning, as they contain important information. Please retain for future reference.

Particularly important information is distinguished in these instructions by the following notations:

NOTE: A NOTE provides key information to make procedures easier or clearer.

CAUTION: A CAUTION indicates special procedures that must be followed to avoid damage to the motorcycle and/or accessories.

WARNING!: A WARNING indicates special procedures that must be followed to avoid injury to a motorcycle operator or person inspecting or repairing the motorcycle.

PROCEDURE:

This kit contains a complete set of switch caps for the left and right handlebar switches. These caps are direct replacements for the OEM black switch caps.

NOTE: We recommend that you reference the OEM service manual to install these caps.

CAUTION: Cover all painted surfaces (gas tank, front fender) with a thick blanket or other material to protect from scratches or dings in the paint.

REMOVAL:

1. Remove the seat to gain access to the battery.
2. Disconnect battery cables, negative (-) cable first.
3. Remove left- and right-side switch housing assemblies. There are two Torx-head screws on the bottom of the switch housings that hold the housings together. Remove these screws.
4. You will also have to loosen the adjusters on the throttle cables on the right housing. Turn the adjusters together to allow enough slack to remove the cables from the twist grip tube. You do not need to remove the cables from the switch housings.



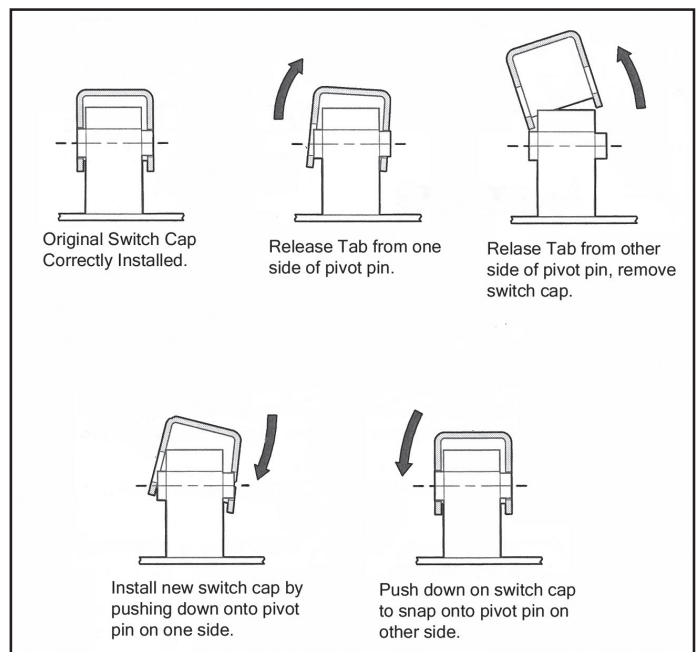
NOTE: It is not necessary to disconnect the switch wiring to replace the switch caps.

5. Remove the switch groups from the switch housings. There are two Torx screws in the bottom-half of the switch housing, which hold the switches in place.

NOTE: Observe the location and routing of the wiring in the switch housing to make re-assembly easier.

INSTALLATION

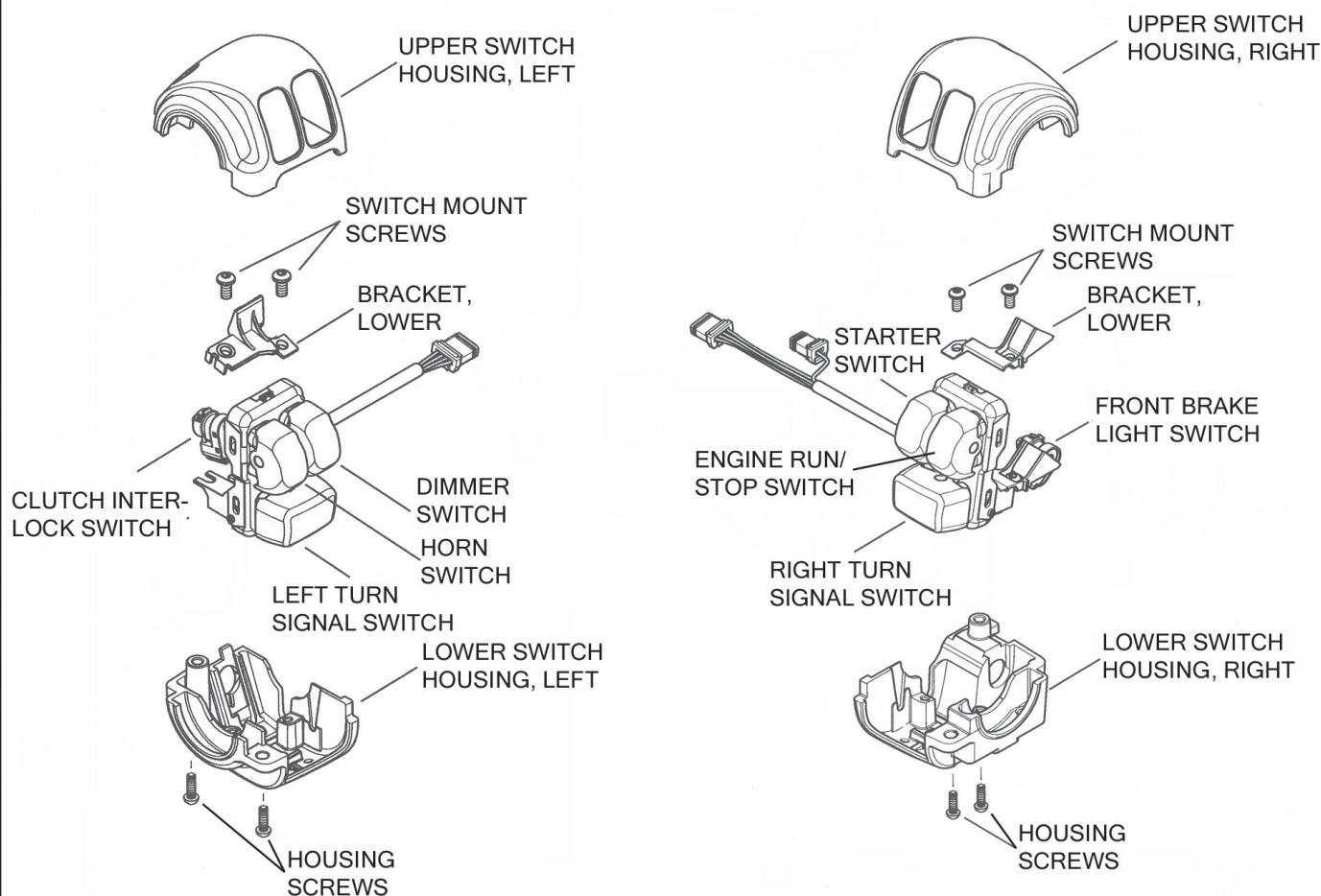
First replace the upper switches.



INSTALLATION INSTRUCTIONS

DRAG SPECIALTIES HANDLEBAR SWITCH CAPS P/N 0616-0152

1. See figure above. Carefully pry stock black switch cap up off the pivot pin shaft on left side of switch.
 2. Pry the switch cap up and away from pivot pin on right side of switch and remove cap.
 3. Select proper replacement switch cap from kit.
 4. Place cap onto switch, angling the hole on right side over pivot pin on switch.
 5. Carefully press switch cap down onto left side pivot pin, rocking and moving the cap until shaft snaps into place.
 6. Click switch back and forth, checking for proper operation.
 7. Repeat steps 1-6 above for the other switches.
 8. Reinstall the switches in the switch housing using original hardware.
 9. Reinstall the switch housings on the handlebars, re-adjust the cables to the proper tension.
 10. Connect the battery, connecting the positive cable first, then the negative cable last.
 11. Test operation of all switches, observing that each switch provides the intended operation.
 12. Check for proper throttle cable adjustment and operation before operating engine.
- WARNING:** Before operating motorcycle, be sure all hardware is tight.



HANDLEBAR SWITCHES, EXPLODED VIEW

