



**MOOSE PLOW MOUNT INSTRUCTIONS
CAN-AM MAVERICK
PART# 4501-0876**

ITEM	PART#	QTY.	DESCRIPTION
1	2826-70	1	Plow Mount Plate
2	2826-2	1	Spacer Bar
3	HDW2387	2	5/16 x 2-3/4 x 4-1/4 Sq. U-Bolt
4	HDW9084	2	5/16 x 4 Hex Bolt
5	HDW7058	6	5/16 Nylock Nut
6	HDW9002	8	5/16 Flat Washer
7	HDW9412	2	1/4" Tube Spacer

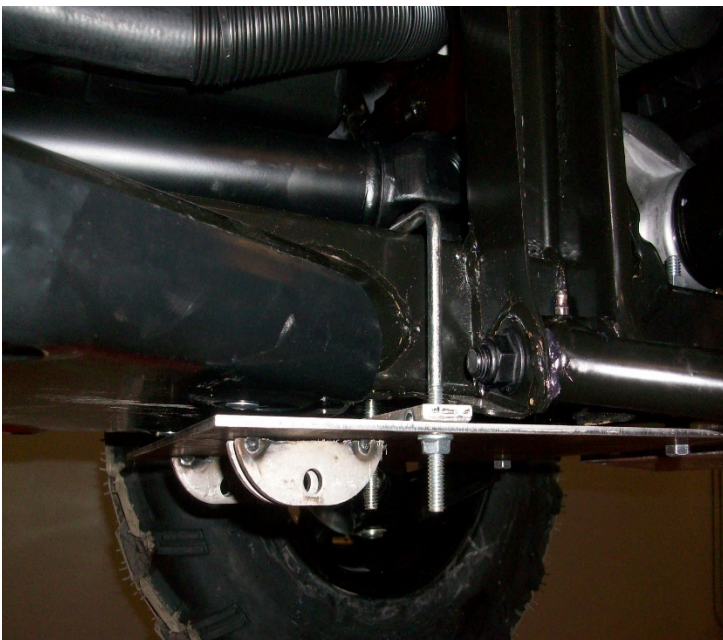
Install plow mount as picture shown below.

First install the U-Bolt over the frame square tube just in front of the round floor board support tube. Place spacer bar up onto the U-Bolts and then slide the plow mount up onto the U-bolts and use 2 washers and nuts to hold in place.

Lift the front of the mount up into place. The 5/16 x 4 hex bolt will be use here and the 1/4" tube spacer. Slide bolt with washer on up through the mount and then the spacer tube and up through the frame tube Then secure with washer and nylock nut on top.

Align mount and tighten all bolts, You may cut off extra U-Bolt threads if they are interfering with the push tube lifting up.

Push tube will pin up with the wire loop pins provided in the push tube kit.



Question or Comments Call 320-964-1616 Monday thru Thursday 7:00 to 4:30 CST

INST2826PF