



KYMCO MXU 700i  
PLOW MOUNT INSTRUCTIONS  
PART# 4501-0653

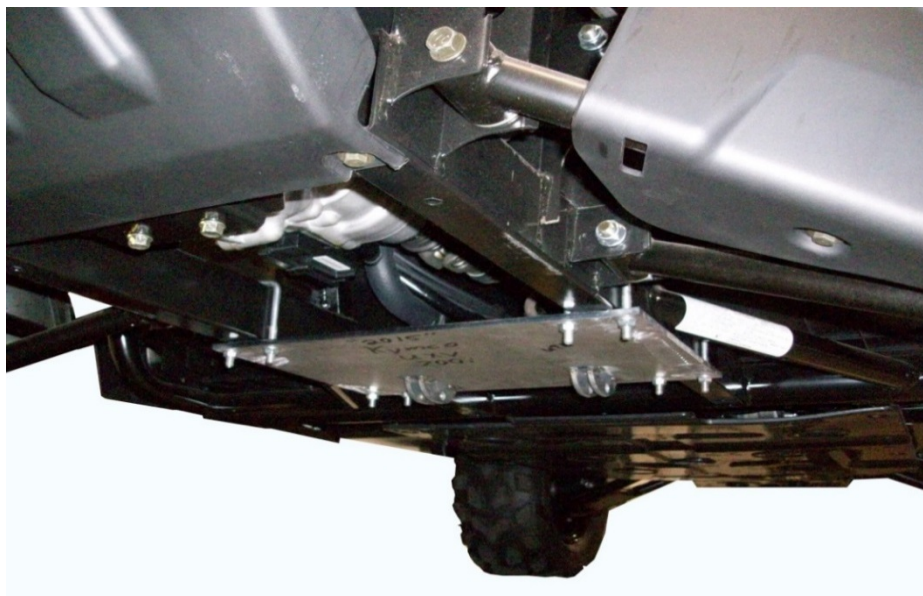
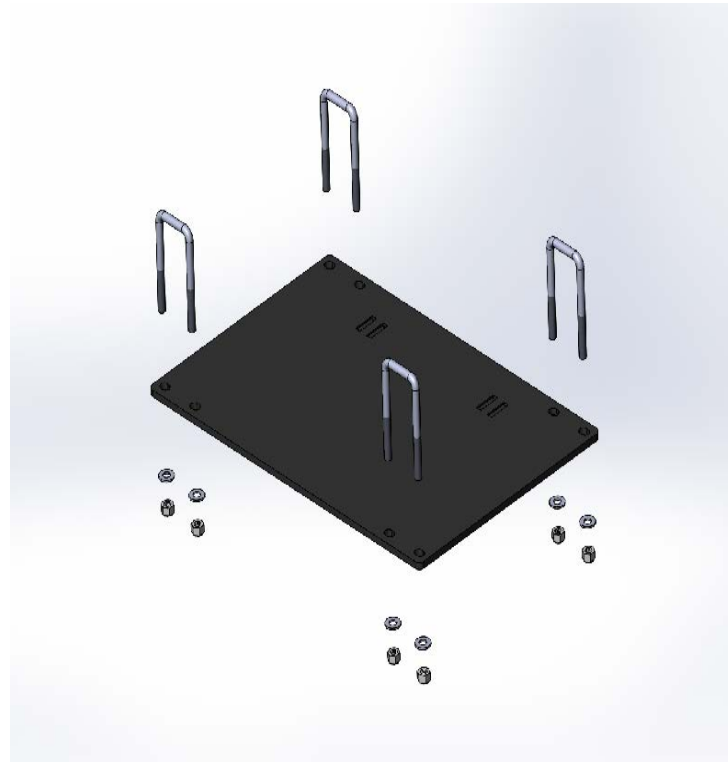
QTY.	PART#	DESCRIPTION
1	2812-100	Bottom Mount Plate
4	HDW2073	5/16 x 1-1/2 x 3-1/2 Sq. U-Bolt
8	HDW7058	5/16 Nylock Nut
8	HDW9002	5/16 Flat Washer

Remove the lower plastic skid plate.

Attach the bottom mount to the underside of the UTV as pictured using the four 5/16" x 1-1/2" x 3-1/2" square U-bolts and 5/16" nylock nuts. Align mount and tighten.

To retain your under-carriage protection, you may take the plastic skid plate, hold it up and mark the U-bolt locations. Then drill through the skid plate so you can mount the plow mount over the top of the plastic skid plate.

Push tube mounting tabs should be toward the back of the plow mount when mounted.



FOR QUESTIONS OR COMMENTS PLEASE CALL: 320-964-1616 (7:00 to 4:30 CST Monday through Thursday).