

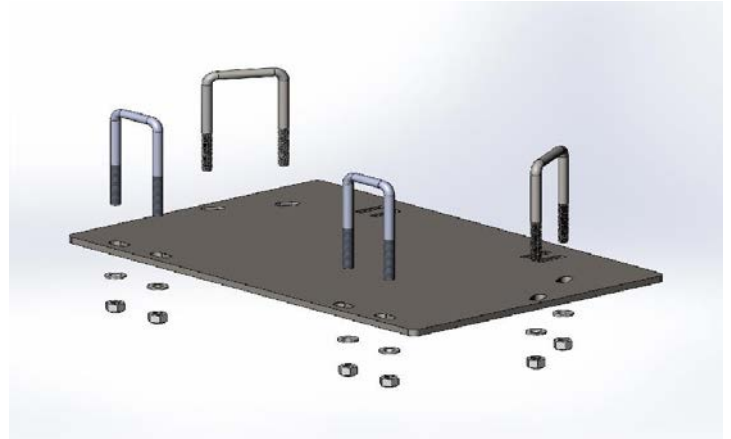


CAN-AM DEFENDER PLOW MOUNT  
PART# 4501-0648

PART #	QTY.	DESCRIPTION
2806-100	1	Bottom Mount
HDW9062	2	5/16 x 2 x 3-1/2 SQ. U-Bolt
HDW2073	2	5/16 x 1-1/2 x 3-1/2 SQ U-Bolt
HDW7058	8	5/16 Nylock Nut
HDW9002	8	5/16 Flat Washer
Inst2806	1	Instruction Sheet

Remove the two center floor board panels.  
first center front section and then the center right floor  
panel.

Remove the right side bolt (Picture with Ratchet) and then  
the left side bolt as pictured. Removing these bolts is so you  
will be able to push the floor boards up when installing the  
u-bolts. After installation of the plow mount reinstall  
the floor board panels.



LEFT SIDE PICTURE



RIGHT SIDE PICTURE

Product has a one year manufacture defect warranty. Never accede 5 mph when plowing snow or you may cause  
damage not covered under warranty. Periodicly check bolts for tightness.

Question or comment please call 320-964-1616 Mon. – Thur. 7:00 to 4:30 cst  
INST2806PF



CAN-AM DEFENDER PLOW MOUNT  
PART# 4501-0648

Front U-bolts (5/16 x 1-1/2 x 3-1/2) will go right in front of the center skid plate as pictured.

Back U-bolts will go around the front frame floor board support as pictured. This is the location that you will have to Pry up on the floor board to get the U-bolt around the frame tube. You may align the plate with the front U-bolts Before placing the second ones in place so you can get them in close proximity on where they need to be.

Align plow mount up with U-bolts and attach with the washers and nylock nuts. Tighten securely. Some models you may need to align the mount on front u-bolts and mark where the back ones need to go and then drill Through the plastic. You may also need to remove some of the revits on the outside skid plates to get the u-bolts in place, you can also cut a slot from the square opening to the u-bolt location to help in the process.

