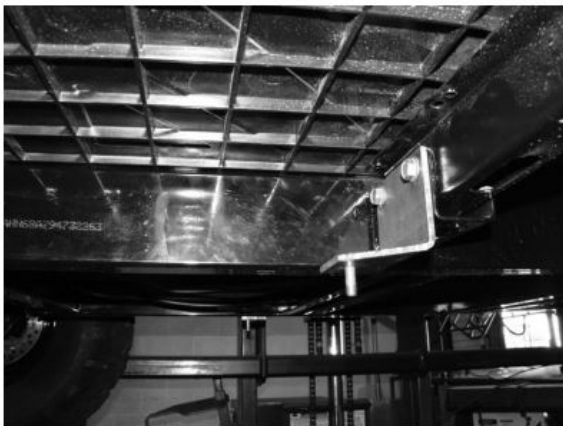
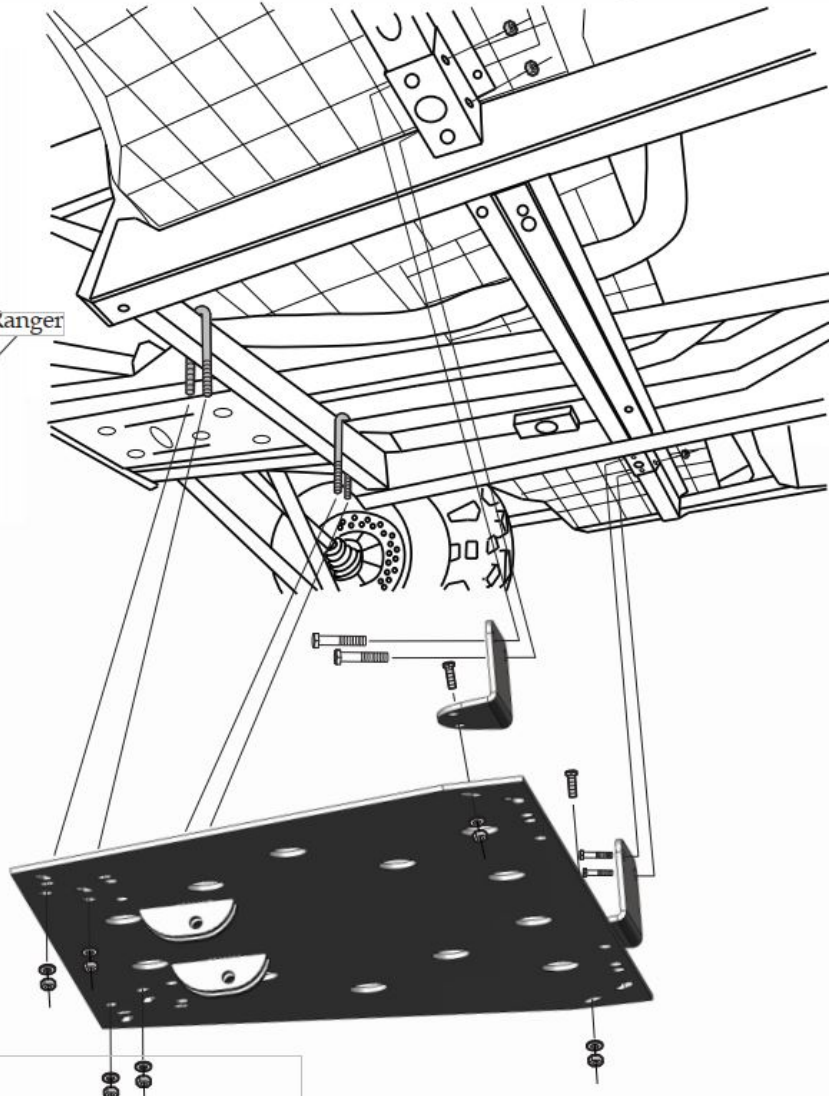
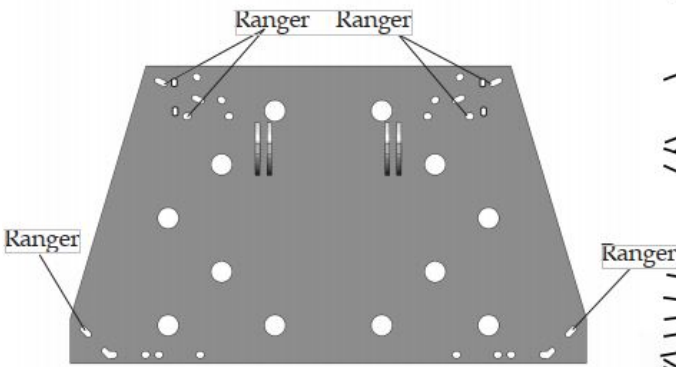




FLOW MOUNT INSTALLATION INSTRUCTIONS
POLARIS
 09-14 RANGER 700/800 XP
 09-10 RANGER 500 / 2011 RANGER DIESEL
PART# 4501-0636

ITEM	PART#	QTY.	DESCRIPTION
1	2754-70	1	Plow Mount Weldment
2	2765-1	2	L-Shaped Mounting Bracket
3	HDW2406	2	5/16 x 2 x 3 Sq. U-Bolt
4	HDW2051	2	5/16 x 1 Hex Bolt
5	HDW9035	4	5/16 x 2-1/2 Hex Bolt
6	HDW9002	6	5/16 Flat Washer
7	HDW7058	10	5/16 Nylock Nut

Remove the stock skid plate. The two L-Shaped brackets will bolt to the inside of the frame tube that supports the floor board area. (See Diagrams) There are two self tapping style screws in this location you will remove then install L-shaped bracket at this location on each side with the L facing forward and use the 5/16 x 2-1/2 hex bolts with nylock nuts to secure. You may have to drill out the hole on some year machine. NOTE: You will need to mark and drill skid plate if you want to retain the factory skid plate on. Hang the square u-bolts over the frame cross member tube as shown, now place mount up onto the u-bolt and place the flat washers and nylock nut on to u-bolts. Swing the mount up to the L-brackets and mount with the 5/16 x 1 hex bolts and flat washers and nylock nuts going in the far outside hole. Align mount and tighten securely. Push tube will pin up to tabs with wire loop pins supplied with push tube kit.



Front of machine

QUESTIONS OR COMMENTS CALL 320-964-1616 7:00 to 4:30 CST Mon. – Thur.

INST2765PF