



RM4 Plow Mount Installation Instructions

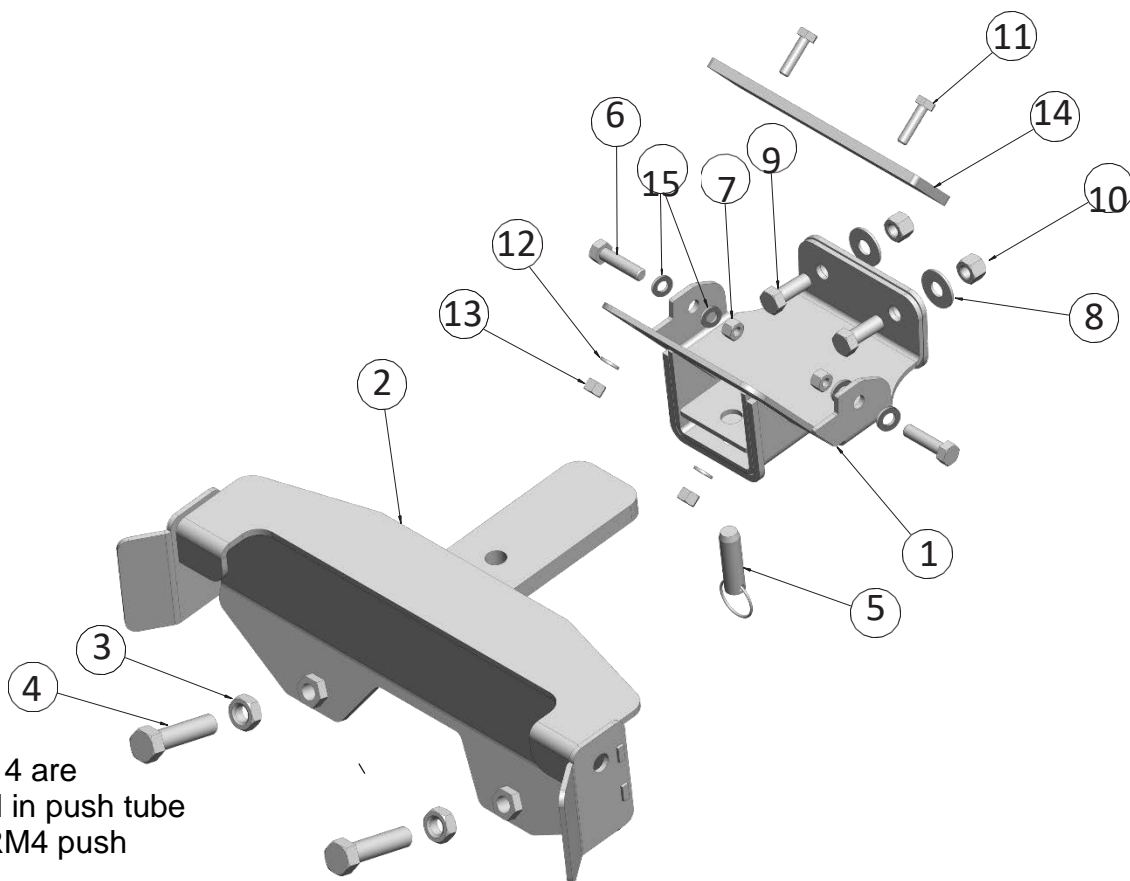
2007-13 Honda Rancher 420 (All)
2014 Rancher 420 (Ind. Suspension Models Only)

Part #: 4501-0786

Ref.	Qty.	Part#	Description
1	1	2588-100	Mount Plate
2	1	KD100	Removable Mount
3	2	in push tube	1/2" Nut
4	2	in push tube	1/2" x 2" Hex Bolt
5	1	HDW9185	Locking Pin
6	2	HDW1056	8mm x 40mm Hex Bolt
7	2	HDW1041	8mm Nylock Nut
8	2	HDW9029	3/8" USS Flat Washer
9	2	HDW2100	3/8" x 1" Hex Bolt
10	2	HDW7061	3/8" Nylock Nut
11	2	HDW2002	1/4" x 1" Hex Bolt
12	2	HDW9012	1/4" Flat Washer
13	2	HDW7050	1/4" Nylock Nut
14	1	1518-4	Spacer Plate
15	4	HDW1110	8mm Flat Washer

The RM4 Mount kit is designed to allow for quick removal when not needed for plowing. This mount design uses the machine's front bumper and frame member to push against and distribute the load when plowing. See below for installation instructions of the mount kit.

NOTE: This RM4 mount will fit with both the Moose winch mount kit and the Honda winch mount kit. If you are experiencing difficulties installing with another brand of winch mount, we recommend purchasing a Moose winch mount kit.



Items 3 and 4 are pre-installed in push tube on all new RM4 push tubes.

FOR QUESTIONS OR COMMENTS PLEASE CALL: 320-964-1616 (7:00 to 4:30 CST Monday through Thursday).

INST2588PF-1



RM4 Plow Mount Installation Instructions

2007-12 Honda Rancher 420 (All)

Part #: 4501-

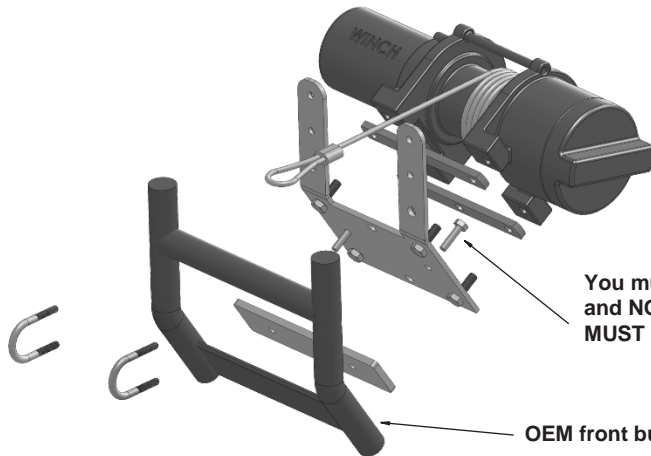
Page 2

INSTALLATION (With Moose Winch Mount):

1. Remove the front plastic bumper cover and lower plastic skidplate. Remove the bolts that secure the middle and bottom of the front bumper to the frame (leave the top two bolts in place). **If you already have a winch installed:** It will be necessary to remove the winch and mount (leave the wiring in place) to ease the installation of the RM4 mount. Pull the front bumper out away from the machine a few inches to ease the installation.

2. Place the spacer plate (#14) inside the front bumper channel. If using a Moose winch mount, you will now have two of these spacer plates, but you will only use one. Use the longer 1/4" x 1" hex bolts (#11) that came with the RM4 mount and install them through the two center holes in the spacer plate from the BACKSIDE. These must point outward towards the front of the machine. You cannot remove them once the winch mount is installed.

3. Install your winch and Moose winch mount kit to the front bumper per those instructions. Push the bumper back into place and bolt the center bumper supports back into place on the frame. Leave the lower bumper supports open for now.



NOTE: Moose winch mount shown here (Sold Separately).

You must use the longer 1/4" x 1" bolts that come with the RM4 mount kit and NOT the 1/4" x 3/4" bolts included with your winch mount kit. These bolts MUST install from the backside and face out toward the front of the machine.

OEM front bumper tubes.

4. The RM4 permanent mount will slide into place from the bottom of the machine as illustrated. Slide the front of the mount into place over the protruding 1/4" bolts and loosely secure with 1/4" flat washers (#12) and nylock nuts (#13).

5. Loosely bolt the rear of the RM4 mount through the holes in the frame using two 3/8" x 1" hex bolts (#9), 3/8" flat washers (#8), and 3/8" nylock nuts (#10). You can put the bolts in through the front of the RM4 mount using a long extension.

6. Bolt the two side tabs of the RM4 mount to the inside of the lower frame/front bumper mounts using two 8mm x 40mm hex bolts (#6) and 8mm flat washers (#15). Loosely secure with two 8mm nylock nuts (#7) and 8mm flat washers (#15). Do not tighten yet. These nuts can be hard to access, use a long extension, universal joint, and a deep 13mm socket. You can then get to the nut from the opposite side of the ATV.

7. Tighten the two rear bolts first so it pulls the mount tight against the frame, then tighten the side 8mm hex bolts/nuts, and lastly the front 1/4" bolts/nuts.

Shown with winch removed for clarity.

Bolt the mount tabs to the inside of the lower frame/bumper mounts using two 8mm x 40mm hex bolts and nuts.

