



RM4 PLOW MOUNT INSTRUCTIONS
03-16 HONDA 600/650 RINCON

PART# 4501-0769

ITEM	QTY.	PART#	DESCRIPTION
1	1	2586-100	Mount Plate
2	1	KD100	Removable Mount
3		HDW7078	Pre-Assembled in push tube
4		HDW9110	Pre-Assembled in push tube
5	1	HDW9185	1/2 Cotterless hitch pin
6	4	HDW2150	5/16 x 1-1/8 x 1-3/4 Rd. U-Bolt
7	8	HDW9002	5/16 Flat Washer
8	8	HDW7058	5/16 Nylock Nut
9	2	HDW2004	1/4 x 1-3/4 Hex Bolt
10	2	HDW9013	1/4 Flat Washer
11	2	HDW7050	1/4 Nylock Nut
12	2	HDW9407	7/8 U-Clamp

1. Remove the lower front aluminum skidpan. **If you already have a winch installed:** You may need to unbolt the winch mount (but keep in place) to ease the installation of the RM4 mount.

2. The RM4 permanent mount (#1) will back up to the main frame tubes underneath the winch and u-bolt into place. The front tabs will attach to the bumper supports with u-clamps. See Illustration.

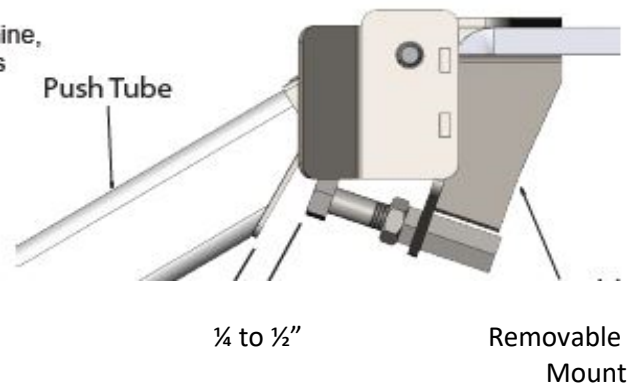
3. Slide the four 1-1/8" x 1-3/4" u-bolts (#6) around the back of the main frame tubes facing forward. The lower u-bolts will sit just above the welded in support bracket in the frame. See Illustration. Slide the mount in place and loosely secure to the u-clamps with eight 5/16" flat washers (#7) and 5/16" nylock nuts (#8).

4. While holding the mount parallel to the ground slide a u-clamp (#12, facing upward) over the bumper support tube and loosely bolt in place to the tab of the RM4 mount. Use a 1/4" x 1-3/4 hex bolt (#9), 1/4" flat washer (#10), and 1/4" nylock nut (#11). Repeat for the other side. Make sure the mount is straight and tighten all nuts and bolts.

5. You will need to trim the lower aluminum skidpan for clearance with the RM4. Hold the skidplate in place and mark the area that will need to be trimmed out for the mount and receiver to fit. Use a sharp cut-off wheel, reciprocating saw or other cutting tool to cut out the skidpan. Reinstall the skidpan.

6. Droop stop bolts and nuts (items 3-4) are pre-installed on the new push tubes. These bolts are to prevent the push tube from folding under the machine and takes pressure off the front tires. Adjust accordingly.

7. Once the complete plow assembly has been installed on the machine, put the blade straight and on the ground. Adjust both droop stop bolts so there is 1/4" to 1/2" clearance between the bolt heads and the bottom of the push tube. Tighten the lock nuts. **NOTE: Failure to properly adjust the droop stop bolts can put excessive load on the mount, the machine, and winch. This may cause damage and will not be warranted.**



FOR QUESTIONS OR COMMENTS PLEASE CALL: 320-964-1616 (7:00 to 4:30 CST Monday through Thursday).

INST2586PF-1

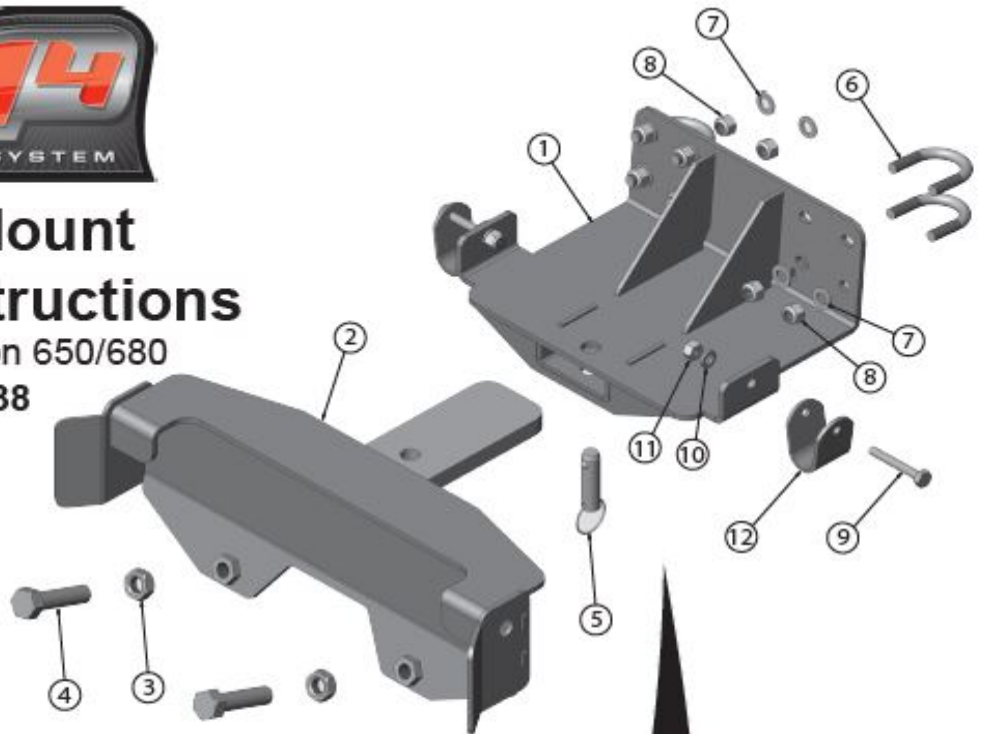


RM4 Plow Mount Installation Instructions

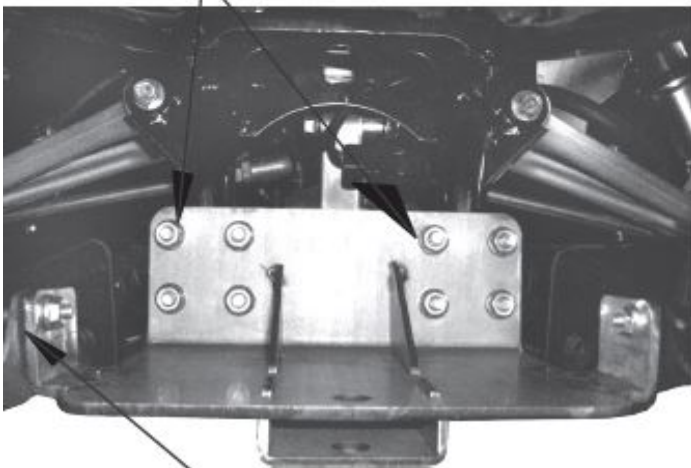
2003-11 Honda Rincon 650/680

Part #: 4501-0338

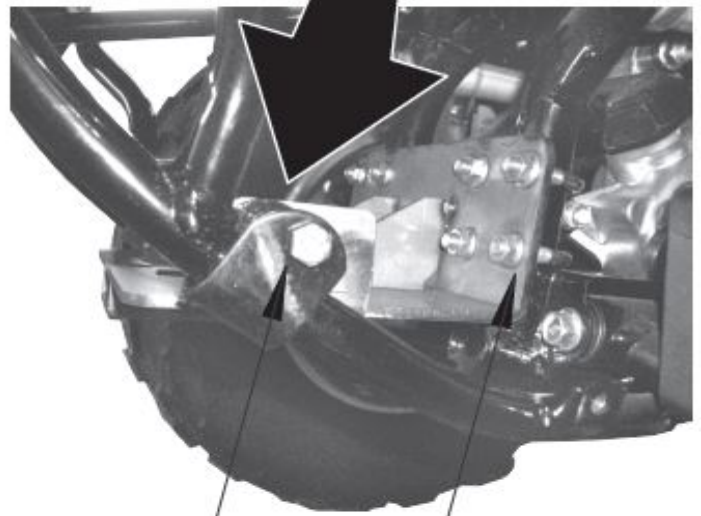
Page 2



Place the u-bolts around the main frame tubes facing forward. Secure with washers and nylock nuts.



Slide the u-clamps around the bumper tubes facing upwards and attach to the mount with the 1/4" bolts, washers, and nylock nuts.



The u-clamps attach around the bumper tubes and bolt to the tabs on the mount.

U-bolt the back of the mount around the main frame tubes.



Cut out the center of the lower pan for clearance of the mount.

Lower pan AFTER cutting.

FOR QUESTIONS OR COMMENTS PLEASE CALL: 320-964-1616 (7:00 to 4:30 CST Monday through Thursday).

INST2586PF-2