



RM4 PLOW MOUNT INSTRUCTIONS

PART# 4501-0767

Polaris 850/1000

QUANTITY	PART#	DESCRIPTION
1	2593-100	RM4 Plow Mount
1	KD100	Removable Mount
1	HDW9185	1/2 x 1-1/2 Cotterless Pin
2	HDW2154	5/16 x 1-1/4 x 2 U-Bolt
4	HDW7058	5/16 Nylock Nut
4	HDW9002	5/16 Flat Washer
2	HDW9066	1/2 x 2-1/2 Hex Bolt
2	HDW9025	1/2 Flat Washer
2	HDW7089	1/2 Nylock Nut

Customer must receive a copy of plow instructions at time of purchase.

The RM4 plow mount is designed for quick removal when not needed for plowing. This mount design uses the machine's front bumper and frame member to push against and distribute the load when plowing.

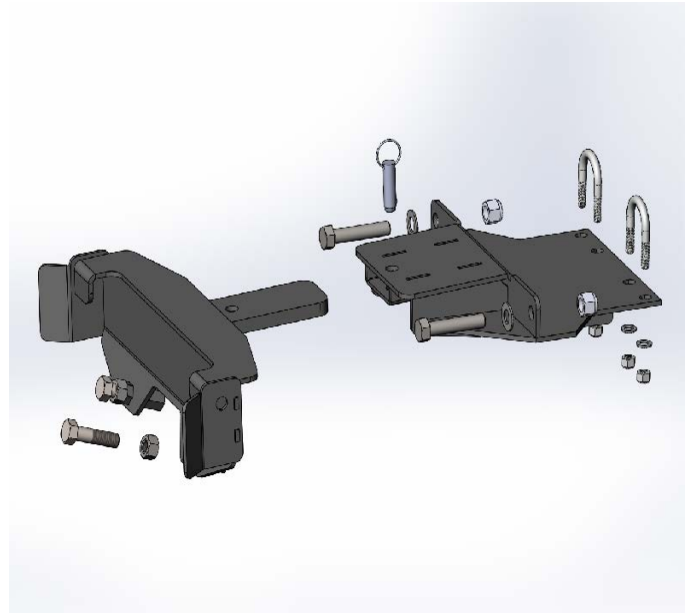
Remove the front plastic skidpan.

Slide mount into place with the hoop on the machine going into the mount and holding in place. See illustration.

In the front, bolt the mount to frame cross member using the two 1/2 x 2-1/2 hex bolts going through the mount on each end and through the frame cross member. Use the two 1/2 flat washers and nylock nuts on the back side.

On the back of the mount, use the two 5/16 x 1-1/4 x 2 U-bolts over the frame tubes and down through the mount. Attach with the 5/16 washers and nylock nuts.

Tighten all bolts securely.



FOR QUESTIONS OR COMMENTS PLEASE CALL: 320-964-1616 (7:00 to 4:30 CST Monday through Thursday).

INST2593PF-1



RM4 PLOW MOUNT INSTRUCTIONS

PART# 4501-0767

**Warranty does not cover hit frozen or foreign objects. This plow should never be operated over 5 MPH
Warranty is one year on manufacture defects only.**

Plow with caution at all time or you may cause damage to system, machine or yourself.

This picture show from the underside on how the RM4 plow mount is attached and mounted. After using few times retighten all bolts to make sure they are tight and secure.

NOTE: you will need to trim the front plastic skidpan to re-attach. On the new 2019 models you will have to trim the bottom section of the plastic guard off (just the center section for the mount to fit)



FOR QUESTIONS OR COMMENTS PLEASE CALL: 320-964-1616 (7:00 to 4:30 CST Monday through Thursday).

INST2593PF-2