



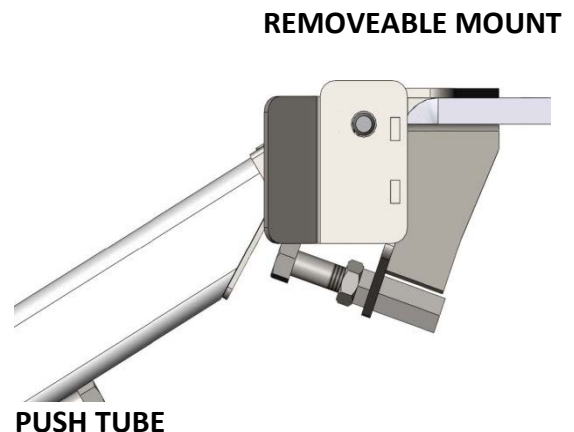
RM4 PLOW MOUNT INSTRUCTIONS
ARCTIC CAT XR500 / XR700
PART# 4501-0670

QTY.	ITEM #	DESCRIPTION
1	2581-100	RM4 PLOW MOUNT
1	KD100PF	REMOVABLE MOUNT (HORN)
2	HDW2158	5/16 X 1-3/8 X 2 U-BOLT
4	HDW7058	5/16 NYLOCK NUT
4	HDW9002	5/16 FLAT WASHER
1	HDW9185	LOCKING PIN

THE RM4 MOUNT IS DESIGNED TO ALLOW FOR QUICK REMOVAL WHEN NOT PLOWING. THIS MOUNT DESIGN USES THE MACHINE'S FRONT BUMPER AND FRAME MEMBERS TO PUSH AGAINST AND DISTRIBUTE THE LOAD WHEN PLOWING.

1. REMOVE THE TWO SIDE LOWER FRONT PLASTIC GUARD BOLTS AND RETAIN.
2. ATTACH THE RM4 MOUNT AS ILLUSTRATED USING THE TWO SIDE BOLTS RETAINED FROM THE PLASTIC GUARD.
3. SWING THE BACK PORTION OF RM4 MOUNT UP IN PLACE AS ILLUSTRATED. ATTACH WITH THE TWO 5/16" X 1-3/8" X 2" U-BOLTS GOING UP OVER THE FRAME TUBES. SECURE WITH THE 5/16" WASHERS AND NYLOCK NUTS. ALIGN AND TIGHTEN.
4. INSTALL THE 1/2" BOLTS AND 1/2" NUTS INTO THE FRONT OF THE REMOVABLE MOUNT. THESE ARE USED AS DROOP STOPS TO KEEP THE PLOW FROM DROOPING DOWN TOO FAR.
5. ONCE THE COMPLETE PLOW ASSEMBLY HAS BEEN INSTALLED ON THE MACHINE, PUT THE BLADE ON THE GROUND. ADJUST BOTH DROOP STOP BOLTS SO THERE IS 1/4" TO 1/2" CLEARANCE BETWEEN THE BOLT HEADS AND THE AND THE BOTTOM OF THE PUSH TUBE. TIGHTEN AND LOCK NUTS.

NOTE: FAILURE TO PROPERLY ADJUST THE DROOP STOP BOLTS CAN PUT EXCESSIVE LOAD ON THE MOUNT, THE MACHINE AND THE WINCH. THIS MAY CAUSE DAMAGE AND WILL NOT BE WARRANTED.



FOR QUESTIONS OR COMMENTS PLEASE CALL: 320-964-1616 (7:00 to 4:30 CST Monday through Thursday).

INST2581PF-1

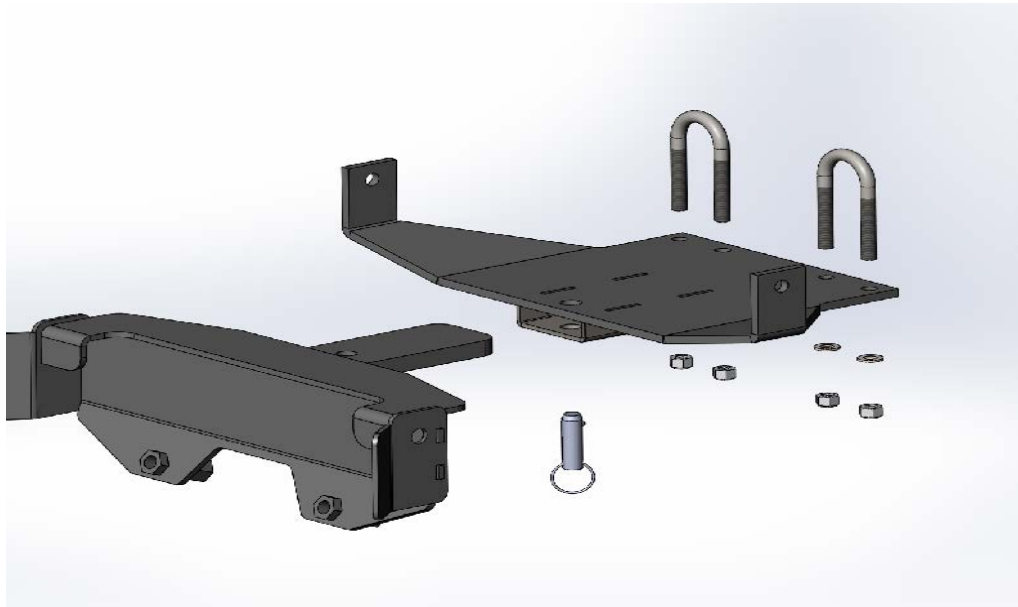


RM4 PLOW MOUNT

PART# 4501-0670

ARCTIC CAT XR500 / XR700 INSTALLATION INSTRUCTIONS

THIS MOUNT KIT IS DESIGNED FOR NORMAL USE AND SHOULD NOT BE USE OVER 5 MPH. EXCESSIVE SPEED CAN CAUSE DAMAGE OR INJURY WHILE PLOWING AND OBJECTS SHOULD ALWAYS BE AVOIDED. HITTING OBJECTS AND CAUSING DAMAGE WILL NOT BE COVERED UNDER WARRANTY. ALWAYS PLOW SAFE. WARRANTY IS ONLY FOR MANUFACTURER DEFECTS. BROKEN ITEMS FROM ABUSE ARE NOT COVERED.



FOR QUESTIONS OR COMMENTS PLEASE CALL: 320-964-1616 (7:00 to 4:30 CST Monday through Thursday).

INST2581PF-2