



RM4 Plow Mount Installation Instructions

2009-15 Kawasaki Mule 4010 (All)

PART# 4501-0802

ITEM	PART#	QTY.	DESCRIPTION
1	2492-100	1	RM4 Plow Mount Weldment
2	KD200	1	Removable Mount
3	HDW9001	4	3/8 Flat Washer
4	HDW7061	2	3/8 Nylock Nut
5	HDW2100	2	3/8 x 1 Hex Bolt
6	HDW9095	2	7/16 x 1-1/4 Hex Bolt
7	HDW9008	4	7/16 Flat Washer
8	HDW7084	2	7/16 Nylock Nut
9	HDW9185	1	1/2" Cotterless Hitch Pin

The RM4 Mount kit is a two piece design to allow for quick removal when not needed for plowing. The retractable pins on the push tube that extend into either side of the mount are to keep the plow in place on the machine and do not take the plowing force, they just hold the plow in position. See below for installation instructions of the mount kit.

NOTE: DIESEL MODELS REQUIRE USING THE KAWASAKI WINCH MOUNT INSTEAD OF THE MOOSE WINCH MOUNT.

NOTE: PULLEY KIT (PART #4501-0669) REQUIRED ON ALL MODELS.

INSTALLATION:

1. Remove the front plastic bumper cover. The back of the permanent mount slides up onto a frame rail from beneath and the front bolts against the front of the horizontal frame rail. See illustrations on back page.

2. Remove the two bolts holding the front of the metal skidplate to the frame. The back of the permanent mount will install on top of the frame where these bolts were removed. Hold the permanent mount in place and secure the front of the mount to the front frame rail. You will use the two uppermost center holes in the frame rail. Bolt in place using two 3/8" x 1" hex bolts (#5), four 3/8" washers (#3), and two 3/8" nylock nuts (#4). See illustration on back page.

3. Bolt the rear of the mount through the frame and skidplate from the top using two 7/16" x 1-1/4" hex bolts (#6), four 7/16" flat washers (#7), and two 7/16" nylock nuts (#8).

4. The front plastic bumper cover will need part of the lower center section removed. Loosely reinstall the bumper cover and slide the removeable mount into place to mark the plastic where it needs to be cut out. Use a sharp knife, hacksaw, or other cutting tool to cut out the center section. Do not cut out the lower mounting holes. Reinstall the bumper cover.

FOR QUESTIONS OR COMMENTS PLEASE CALL: 320-964-1616 (7:00 to 4:30 CST Monday through Thursday).

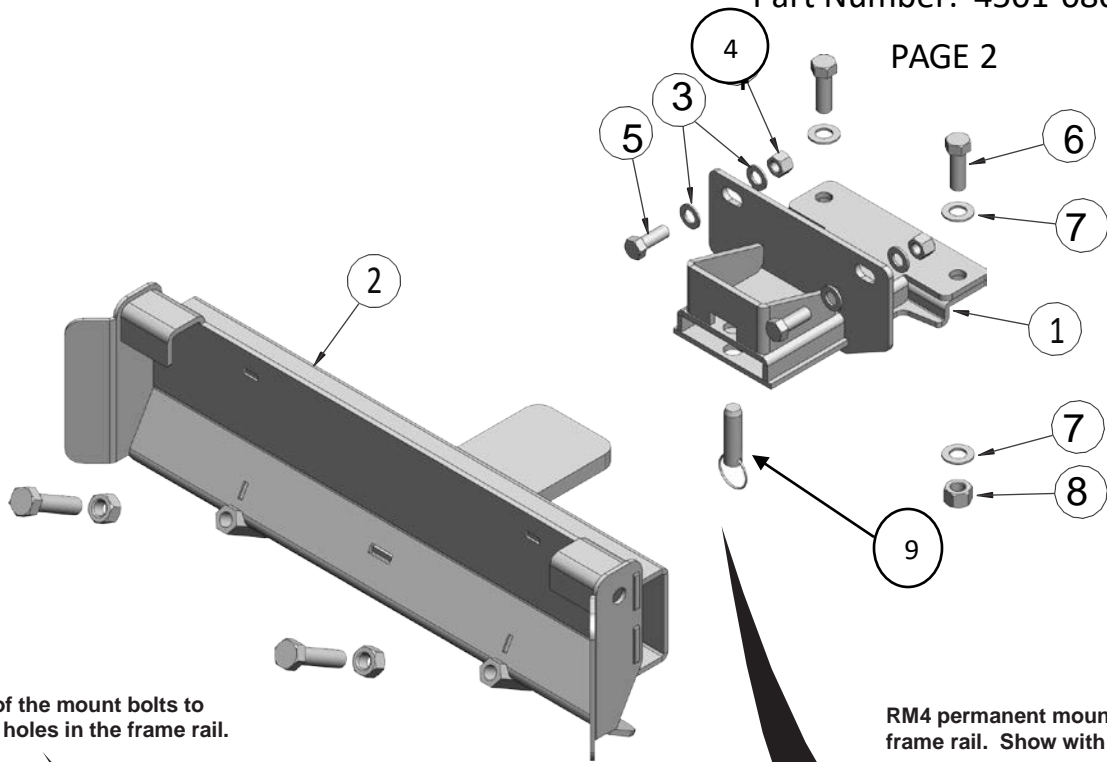
INST2492PF-1

The bolts and nuts on the removable mount are now pre-assembled in the push tubes. The hitch pin is also with the push tube in the bolt bag kit.

RM4 Plow Mount Installation Instructions

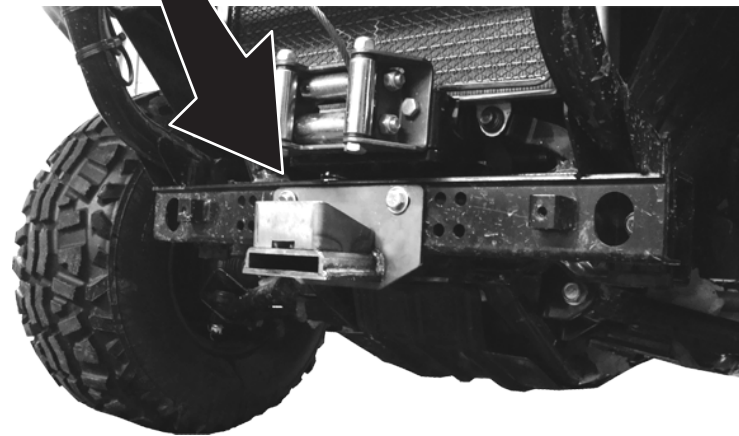
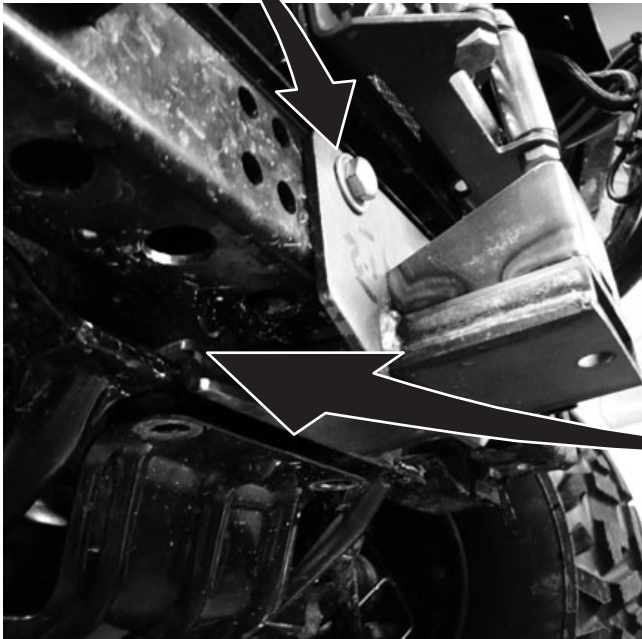
Kawasaki Mule 4010 (All)

Part Number: 4501-0802



The top portion of the mount bolts to the center upper holes in the frame rail.

RM4 permanent mount position on the front frame rail. Show with bumper cover removed.



The rear portion of the mount slides up on top of the rear frame rail.

WARNING!

THIS MOUNT KIT IS DESIGNED TO WITHSTAND NORMAL PLOWING FORCES AT A MAXIMUM SPEED OF 5 MPH. EXCESSIVE PLOWING SPEED OR IMPACTING IMMOVABLE OBJECTS MAY DAMAGE THE PLOW, MACHINE, OR OPERATOR AND WILL NOT BE WARRANTED. THIS PLOW SYSTEM IS COVERED BY A ONE YEAR WARRANTY FROM DEFECTS IN MANUFACTURING. PLEASE CONTACT THE MANUFACTURER AT THE NUMBER LISTED BELOW FOR ANY POSSIBLE WARRANTY CLAIMS. BENT OR BROKEN COMPONENTS FROM ABUSE OR EXCESSIVE SPEED WILL NOT BE WARRANTED.

FOR QUESTIONS OR COMMENTS PLEASE CALL: 320-964-1616 (7:00 to 4:30 CST Monday through Thursday).

INST2492PF-2