

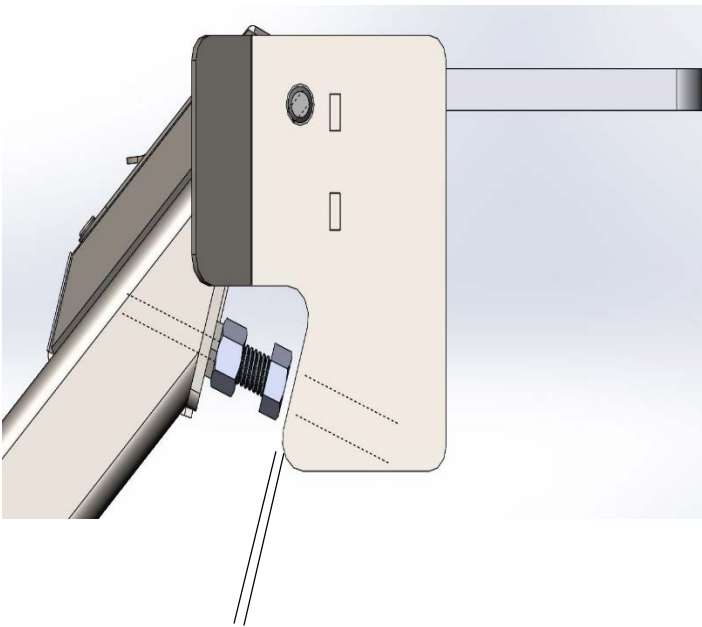


The RM4 mount kit is designed to allow for quick removal when not needed for plowing. This mount design uses the front bumper and frame member to push and distribute the load when plowing. You can quickly remove just the push tube if needed or you can remove the push tube and the removable mount plate if desired.

The droop stop bolts on the first RM4 mount were in the removable mount. Now the bolts are installed new RM4 push tubes. The adjustment is still the same, you will want to have about 1/4" to 1/2" gap between the bolt head and push tube or the bolt head and mount. This is all the float you should need on the push tubes. And make this adjustment on flat ground.

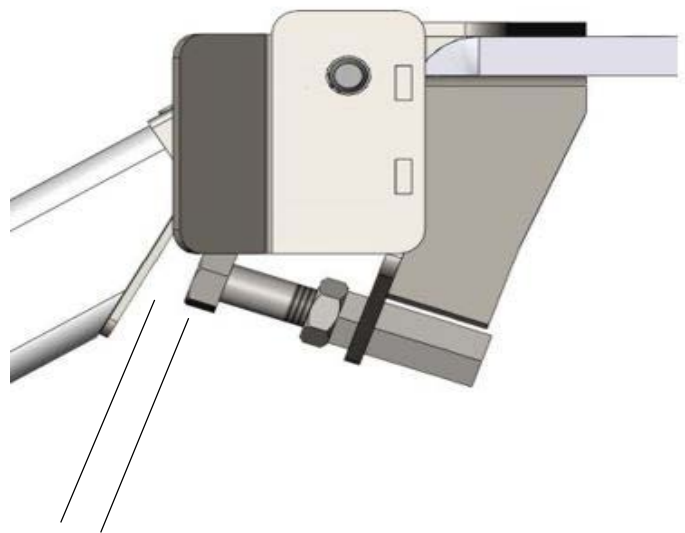
Failure to properly adjust the droop stop bolts (or have them in place) will void all warranty.

NEW STYLE RM4 PUSH TUBE WITH BOLTS



1/4" to 1/2" inch gap.

OLD STYLE RM4 WITH BOLT IN MOUNT



1/4" to 1/2" inch gap.

FOR QUESTIONS OR COMMENTS PLEASE CALL: 320-964-1616 (7:00 to 4:30 CST Monday through Thursday).

INST2478PF

OPERATING INSTRUCTIONS

READ BEFORE OPERATING

Customer must receive a copy of these instructions at time of purchase.

DANGER

Remove bottom mount and/or front mount before doing any trail riding.

To avoid serious injury and/or death:

1. Always use extreme caution while operating the plow on slopes, grades or slippery surfaces.
2. Stay clear of blade and other moving parts during plow operation.
3. When plowing, never ram piles of snow or frozen objects.
4. Always back up before raising the plow blade.
5. Beware of your area and avoid hitting frozen objects at all costs.

WARNING

To avoid personal or other injury:

1. Read your machine's operators manual.
2. Always wear safety apparel when operating machine such as: boots, gloves, helmet and eye protection. Never wear loose clothing.
3. Never allow passengers on machine while operating.
4. Always keep blade in the down position when not in use or when performing maintenance.

OPERATION

For Safe Operation:

1. The blade and plow mount system were designed with safety in mind to protect you and your machine. Certain parts are designed to fail when the system is over-stressed.
2. When adjusting the blade angle: make sure blade is off the ground slightly, lock blade and turn off machine. Always make sure the blade position pin is locked and the pin is all the way through the swivel.
3. Always double check the nuts and bolts to make sure everything is tight/secure.
4. Always know your surroundings and what you are plowing.
5. Never exceed more than 5 mph (8 kph) when plowing.
6. Never hit or ram and large or frozen snowbanks.
7. When plow is not in use: lower it to the ground, turn off machine and lock the brake.
8. The plow system is only intended for snow and not to be used to move any other objects (especially any frozen objects).
9. This plow is not to be used for commercial purposes.
10. Make sure you are familiar with operating the machine/plow before doing so. Always read the operator's manual.

FOR QUESTIONS OR COMMENTS PLEASE CALL: 320-964-1616 (7:00 to 4:30 CST Monday through Thursday).



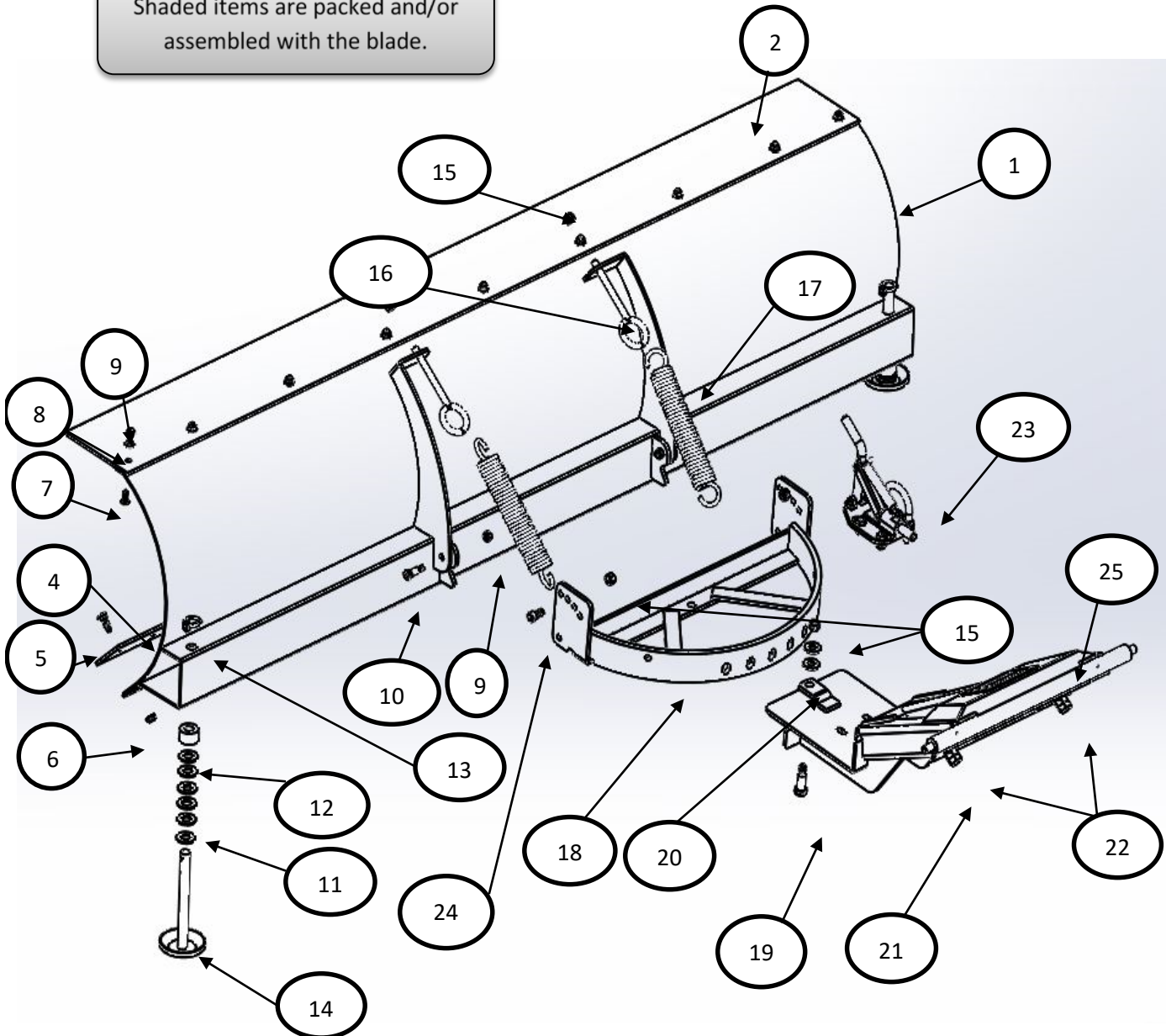
UTV PUSH TUBE AND BLADE MOUNTING INSTRUCTION
P/N 4501-0764

Customer must receive a copy of this instruction sheet at the time of sale.

For Questions or Comments Please Call:
 320-964-1616: Mon to Thur. 7:00-4:30 CST.

ITEM	QTY.	PART#	DESCRIPTION
1	1		Plow Blade 66", 72"
2	1		Rubber Flap 66", 72"
4	1		Wear Bar 66", 72"
5	9	HDW2064	5/16 x 1 Carriage Bolt
6	9	HDW7056	5/16 Serrated Flange Nut
7	9	HDW2069	5/16 x 3/4 Carriage Bolt
8	9	HDW9003	5/16 Flat Washer
9	11	HDW7058	5/16 Nylock Nut
10	2	HDW2161	3/8 x 3/4 Shoulder Bolt
11	12	HDW9005	5/8 Flat Washer
12	2	HDW2356	3/4 Rubber Spacer
13	2	HDW2315	3/16 x 1-1/4 Lynch Pin
14	2	2550	Blade Skid
15	5	HDW7061	3/8 Nylock Nut
16	2	HDW2117	3/8 x 6 Eye Bolt
17	2	HDW2369	Blade Spring
18	1	KD60PF	Blade Swivel
19	1	HDW2160	1/2 x 1 Shoulder Bolt
20	2	HDW9025	1/2 Flat Washer
21	2	HDW9110	1/2 x 2 Hex Bolt
22	2	HDW7078	1/2 Hex Nut
23	1	KD64	Blade Position Pin Assembly
24	2	HDW93303	3/8 x 3/4 Socket Head Bolt
25	1	2478-100	Push Tube Weldment

Shaded items are packed and/or assembled with the blade.



Install the blade swivel onto the front of the push tubes using the 1/2" x 1" shoulder bolt, two 1/2" washers and one 3/8" nylock nut. Make sure swivel still turns after tightening (you may only need one washer).

Install the KD64 blade position-pin assembly to push tube by removing the nuts from the bottom and placing on top of push tube with pin going through the swivel and push tube bracket. Align holes and secure with nuts previously removed. The U-bolt on the position-pin assembly is where you hook your cable winch to.

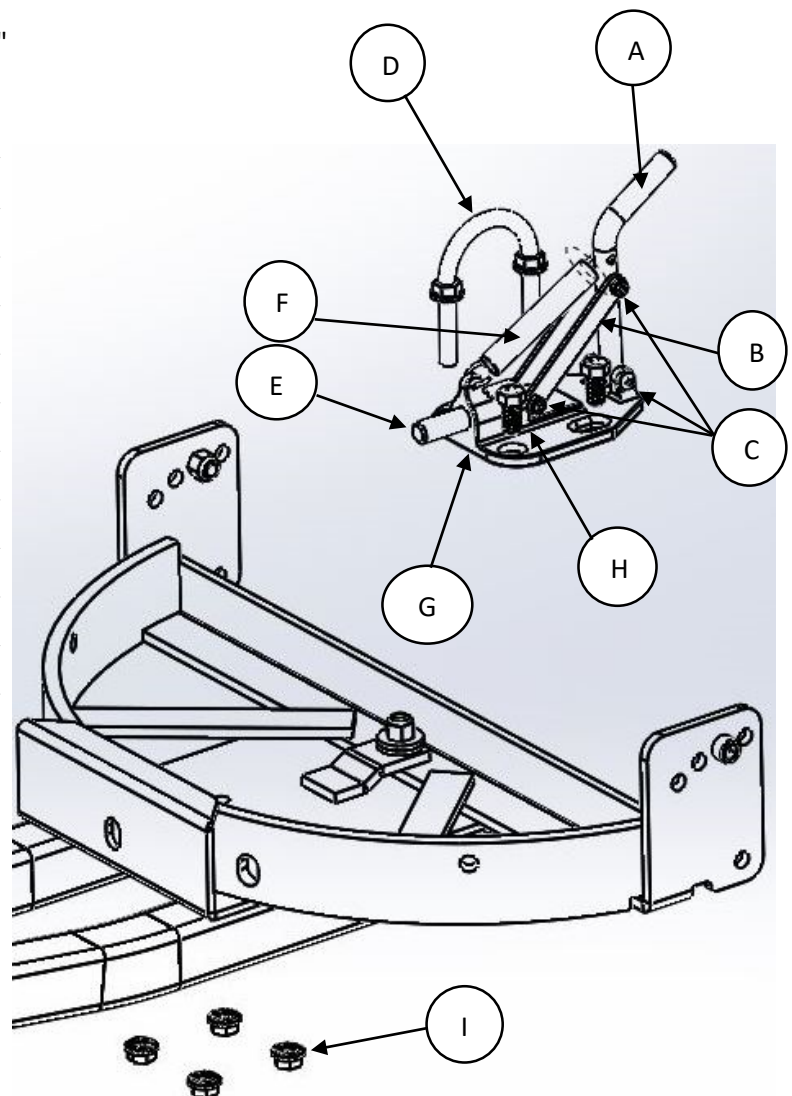
Hook the blade to the swivel by removing the shoulder bolts on the back of the blade and sliding swivel in place between the blade arc and the tab on back of the blade. Bolt using the bottom holes and tighten. Use the 3/8" x 3/4" socket head bolt and 3/8" nylock nut for the blade stop in the top set of holes (start in the second hole back hole).

Hook your blade springs to the swivel in the small hole on the top edge of the half moon part. Use the 3/8" x 6" eye bolt to go from spring to arc on the back of blade. Secure with 3/8" nylock nut and tighten so there is about 1" to 1-1/2" of thread shown (this is a starting point for spring tension).

The push tube will attach to the mount on the front of the machine. After everything is attached, you may adjust the blade to get the skids to be level or tilted back slightly. You may adjust the skids by transferring washers from the top to bottom or vice versa. Skids and wear bar should touch ground at same time (or to your discretion).

Park the machine on level ground and adjust the droop stop bolts. Make sure blade is set right and use a level to adjust the droop stop bolt so there is about 1/4" to 1/2" gap between bolt head and removable mount.

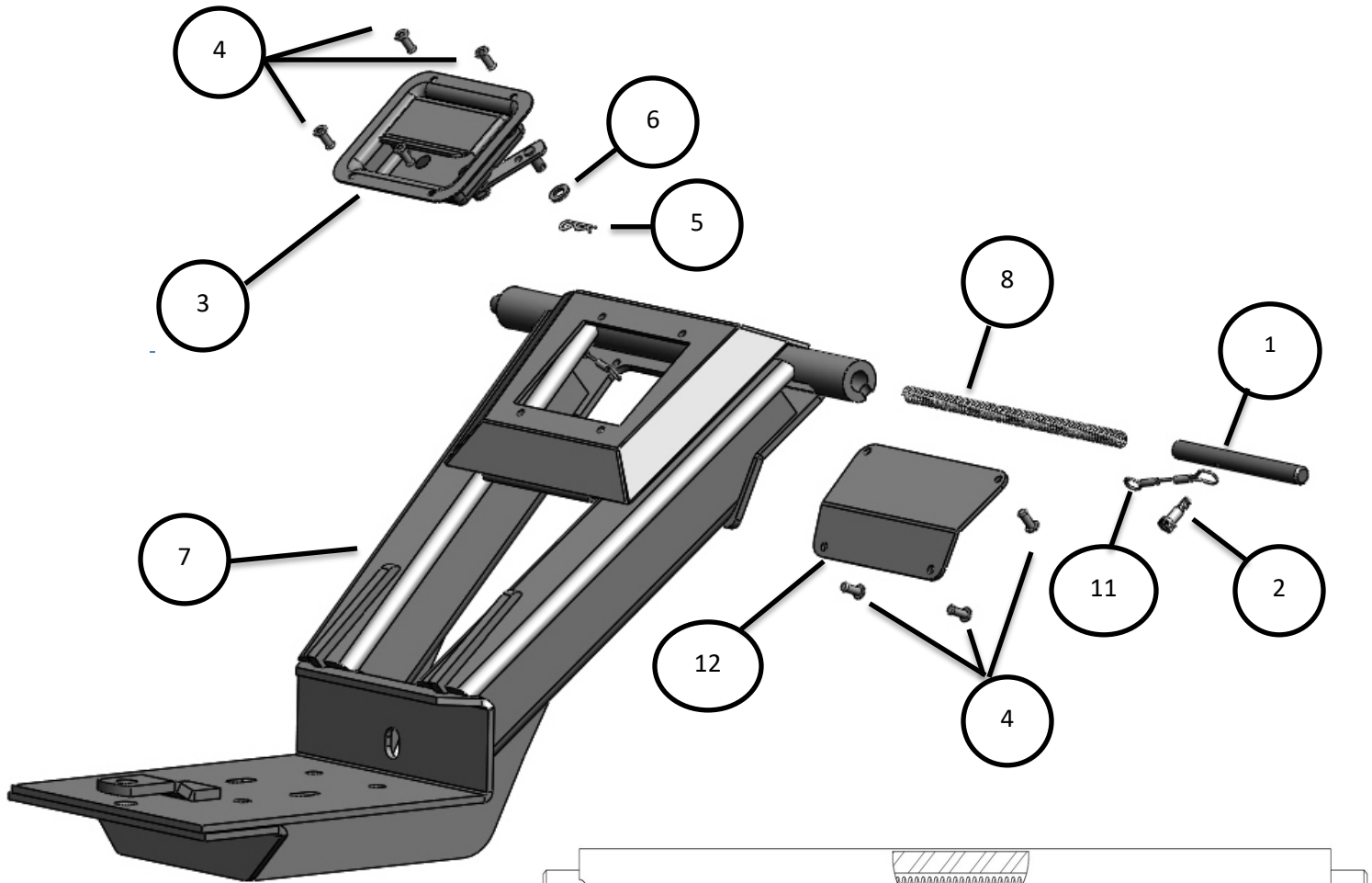
ITEM	PART#	QTY.	DESCRIPTION
A	KD64-3	1	Position Pin Handle
B	KD64-2	2	Position Pin Handle Straps
C	HDW2250	3	#8 x 1-1/2 Phillips Screw
	HDW7088	3	#8 Nylock Nuts (not visable)
D	HDW2145	1	3/8 x 2 x 3 Rd. U-Bolt
E	KD64-4	1	1/2 x 3-1/4 Position Pin
F	HDW2367	1	Position Pin Spring
G	KD64-1	1	Position Pin Bracket
H	HDW2106	2	3/8 x 3/4 Hex Bolts
I	HDW7060	6	3/8 Serrated Flange Nut



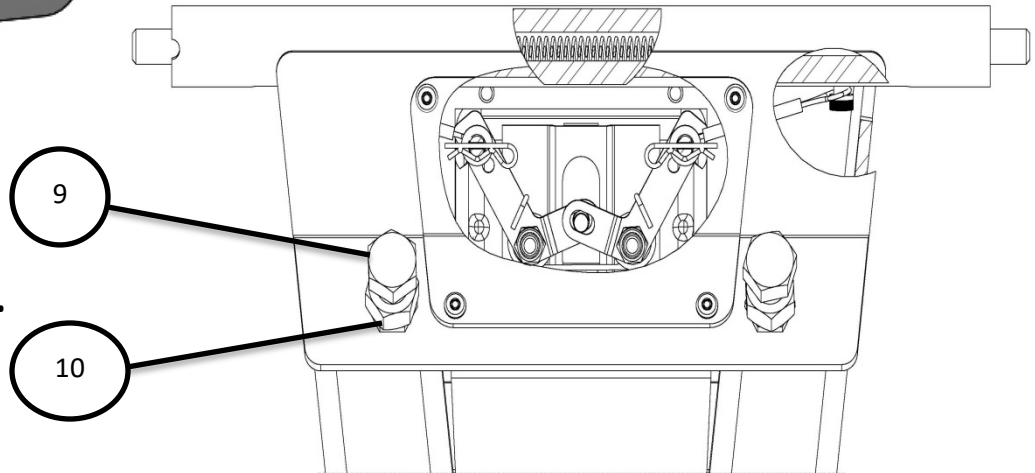


**EXPLODED VIEW UTV
INTERNAL PARTS LIST
P/N 4501-0764**

ITEM #	QTY.	PART #	DESCRIPTION
1	2	2478-9	Release Pin
2	2	HDW9198	1/4 x 3/8 Shoulder Bolt
3	1	HDW9404	Paddle Latch
4	8	HDW9170	1/8 Pop Rivet
5	2	HDW9202	1-1/8 Hair Pin Clip
6	2	HDW9012	1/4 Flat Washer
7	1	2478-101	RM4 Push Tube Weldment
8	1	2478-10	Top Compression Spring
9	2	HDW9110	1/2 x 2 Hex Bolt (full thread)
10	2	HDW7078	1/2 Hex Jam Nut
11	2	2478-11	UTV Latch Cable
12	1	2478-7	Access Hole Cover Plate



**Items 9 and 10 are in
Pre-Installed in Push Tube.**



FOR QUESTIONS OR COMMENTS PLEASE CALL: 320-964-1616 (7:00 to 4:30 CST Monday through Thursday).

INST2478PF