



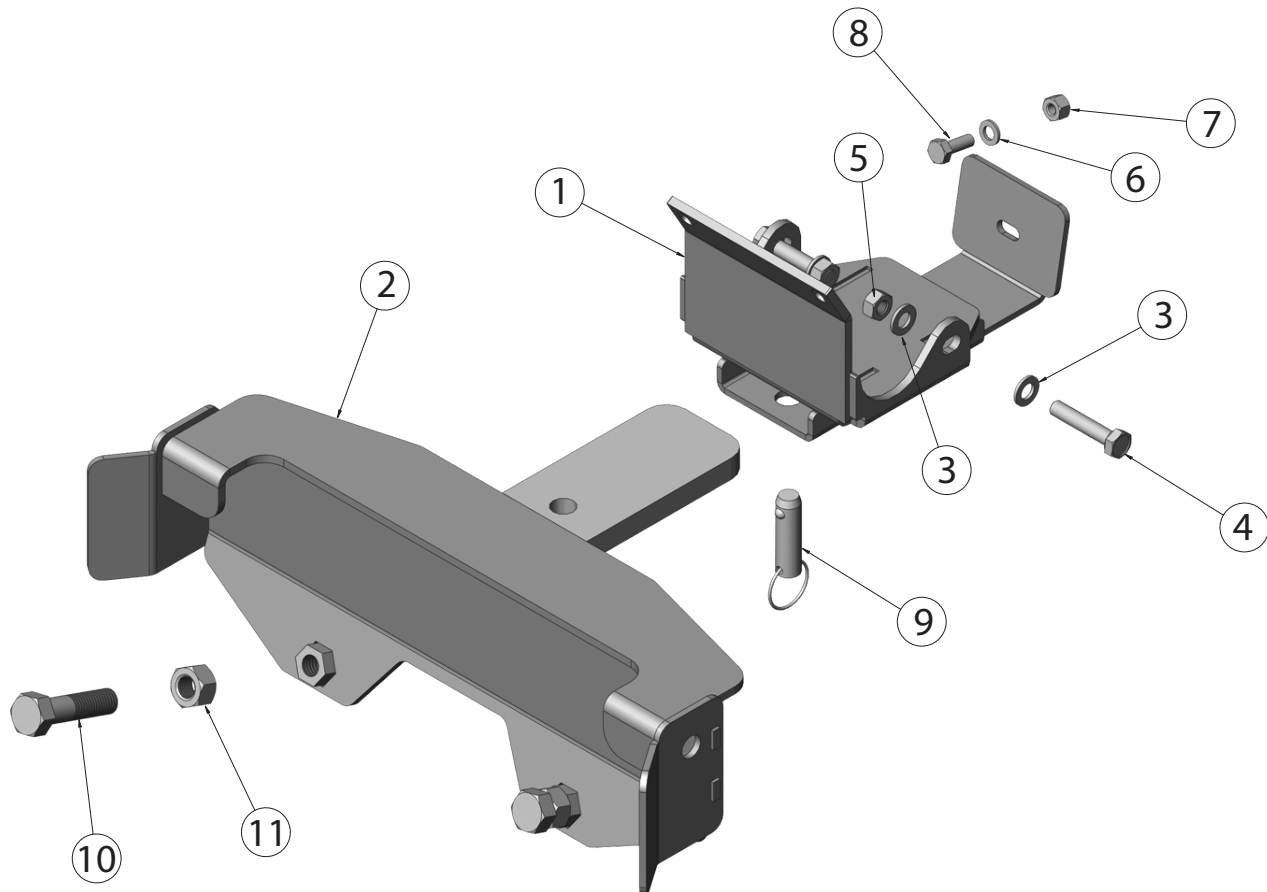
RM4 Plow Mount Installation Instructions

2012-13 Honda Foreman 500

Part #: 4501-0426

Ref.	Qty.	Part#	Description
1	1	2589-100	Mount Plate
2	1	2597-200	Removable Mount
3	4	HDW9002	5/16" Flat Washer
4	2	HDW1056	8mm x 40mm Hex Bolt
5	2	HDW1041	M8 Nylock Nut
6	1	HDW9012	1/4 Flat Washer
7	1	HDW7050	1/4" Nylock Nut
8	1	HDW2000	1/4" x 3/4" Hex Bolt
9	1	HDW9185	Hitch Pin
10	2	HDW9110	1/2" x 2" Hex Bolt
11	2	HDW7078	1/2" Nut

The RM4 Mount kit is designed to allow for quick removal when not needed for plowing. This mount design uses the machines front bumper and frame member to push against and distribute the load when plowing. See below for installation instructions of the mount kit.
NOTE: This RM4 mount will fit with both the Moose winch mount kit and the Honda winch mount kit. If you are experiencing difficulties installing with another brand of winch mount we recommend purchasing a Moose winch mount kit.



WARNING!

THIS MOUNT KIT IS DESIGNED TO WITHSTAND NORMAL PLOWING FORCES AT A MAXIMUM SPEED OF 5 MPH. EXCESSIVE PLOWING SPEED OR IMPACTING IMMOVABLE OBJECTS MAY DAMAGE THE PLOW, MACHINE, OR OPERATOR AND WILL NOT BE WARRANTED. THIS PLOW SYSTEM IS COVERED BY A ONE YEAR WARRANTY FROM DEFECTS IN MANUFACTURING. PLEASE CONTACT THE MANUFACTURER AT THE NUMBER LISTED BELOW FOR ANY POSSIBLE WARRANTY CLAIMS. BENT OR BROKEN COMPONENTS FROM ABUSE OR EXCESSIVE SPEED WILL NOT BE WARRANTED.

FOR QUESTIONS OR COMMENTS PLEASE CALL THE MANUFACTURER: **763-689-4800**

All images used are copyrighted property of CMP and may not be used without permission. Inst2589 01/25/2012



RM4 Plow Mount Installation Instructions

Honda Foreman 500

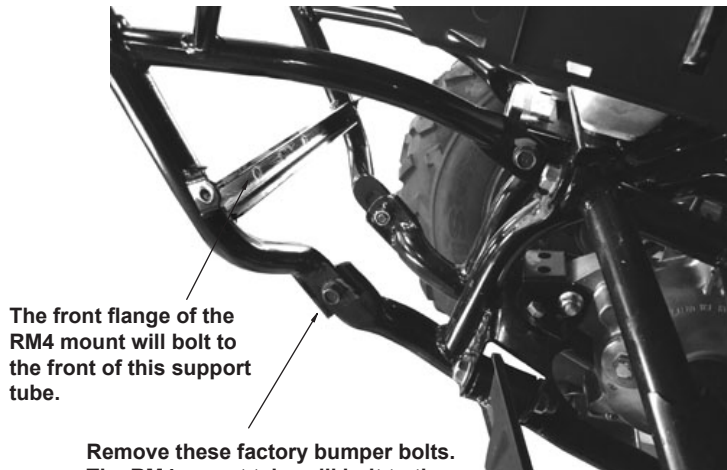
Part #: 4501-0426

Page 2

INSTALLATION:

1. Remove the front plastic bumper cover and lower plastic skidplate. Remove the two bolts that secure the bottom of the front bumper to the main frame tubes. **If you already have a winch installed:** It may be necessary to unbolt the winch and mount (but leave in place) to ease the installation of the RM4 mount.

2. Hold the RM4 mount in place on the machine per the illustrations. The two main side tabs of the RM4 mount will slide up inbetween the main frame tubes where the bottom of the front bumper attaches. This is where you removed the two bolts in the previous step. Loosely install the included 8mm x 40mm hex bolts through the front bumper, main frame tubes, and RM4 mount tabs. Loosely secure on the inside with two 8mm nylock nuts.



The front flange of the RM4 mount will bolt to the front of this support tube.

Remove these factory bumper bolts. The RM4 mount tabs will bolt to the inside of these main frame tubes.

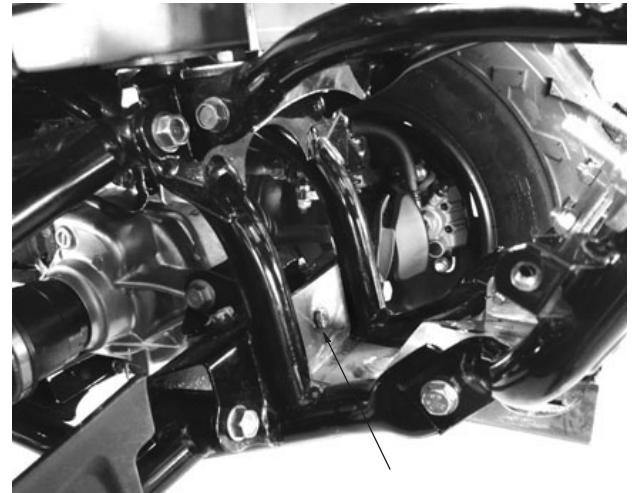


Bolt the RM4 in place using the included 8mm x 40mm hex bolts and 8mm nuts.

Bolt the RM4 in place using the included 8mm x 40mm hex bolts and 8mm nuts.

3. The top flange of the RM4 will bolt to the OUTSIDE of the horizontal channel on the front bumper and your winch mount will bolt to the INSIDE of the channel. Use the hardware and spacers supplied with your **winch mount** to secure the RM4 and winch mount to the channel. Do not tighten down all the way yet.

4. The back flange of the RM4 mount will butt up against a bracket on the frame between the two vertical frame tubes. Use the 1/4" x 3/4" hex bolt, flat washer, and nylock nut to bolt through the back hole in the RM4 to the frame.



Bolt the back flange of the RM4 to the frame using a 1/4" bolt, washer, and nylock nut.

FOR QUESTIONS OR COMMENTS PLEASE CALL THE MANUFACTURER: **763-689-4800**

All images used are copyrighted property of CMP and may not be used without permission.

Inst2589 01/25/2012



RM4 Plow Mount Installation Instructions

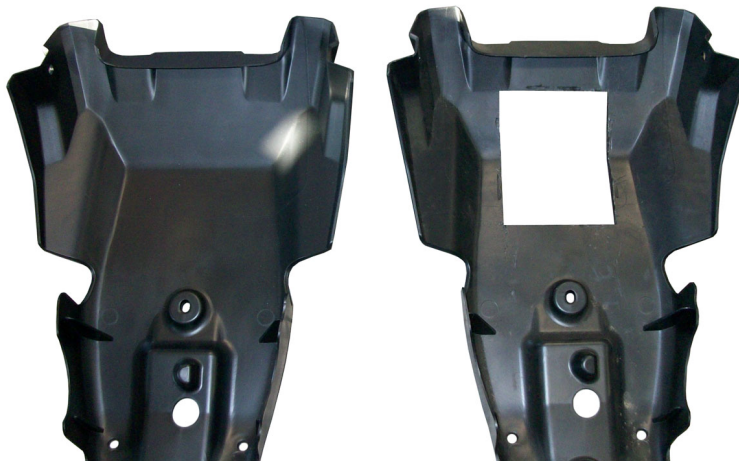
2012 Honda Foreman 500

Part #: 4501-0426

Page 3

INSTALLATION (Cont.):

5. Verify the mount is straight and tighten all the nuts/bolts. Reinstall your winch and winch mount if previously unbolted.
6. You will need to trim the lower plastic skidplate for clearance with the RM4. Hold the skidplate in place and mark the area that will need to be trimmed out for the mount and receiver to fit. Use a sharp knife, hacksaw, or other cutting tool to cut out the skidplate. Put skidplate back in place. Reinstall the front plastic bumper cover.

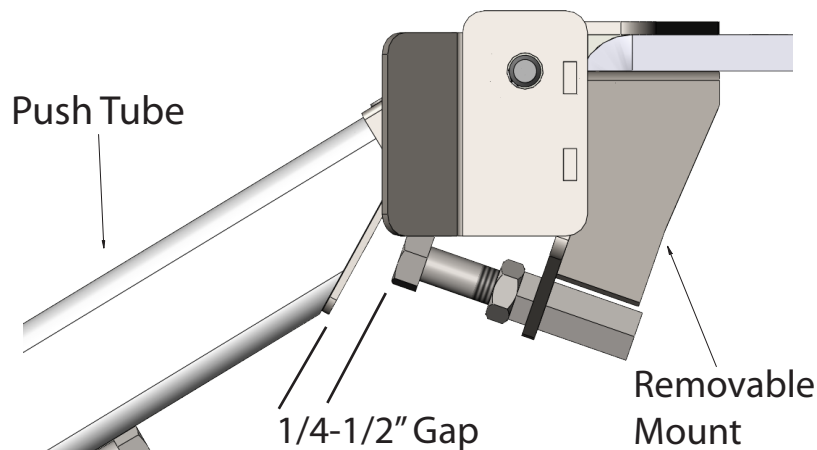


Cut out the center
section for the RM4.

Front bumper cover BEFORE cutting. Front bumper cover AFTER cutting.

7. Install the 1/2" bolts (#4) and 1/2" nuts (#3) into the front of the removable mount. These are used as droop stops to keep the plow from dropping down too far. Thread them in about half way for now. Slide the removable mount into place on the machine mount and pin from the bottom with the locking pin (#5). You can now attach your push tube and plow assembly.

8. Once the complete plow assembly has been installed on the machine, put the blade straight and on the ground. Adjust both droop stop bolts so there is 1/4" to 1/2" clearance between the bolt heads and the bottom of the push tube. Tighten the lock nuts. **NOTE: Failure to properly adjust the droop stop bolts can put excessive load on the mount, the machine, and winch. This may cause damage and will not be warranted.**



FOR QUESTIONS OR COMMENTS PLEASE CALL THE MANUFACTURER: **763-689-4800**

All images used are copyrighted property of CMP and may not be used without permission.

Inst2589 01/25/2012