



RM4 Plow Mount Installation Instructions

2005-14 Kawasaki Mule 610 (All)

Part Number: 4501-0435

The RM4 Mount kit is a two piece design to allow for quick removal when not needed for plowing. The retractable pins on the push tube that extend into either side of the mount are to keep the plow in place on the machine and do not take the plowing force, they just hold the plow in position. See below for installation instructions of the mount kit. **NOTE:** This RM4 mount will fit with the Moose winch mount kit and many other aftermarket winch mount kits. If you are experiencing difficulties installing with another brand of winch mount we recommend purchasing a Moose winch mount.

INSTALLATION:

1. Remove the front plastic bumper cover.
2. The back of the permanent mount (#1) will install on the center frame weldment with the four threaded holes. Bolt in place using four 1-1/4" spacers (#7) and M10 x 55mm hex bolts (#10).
3. Hold the lower wing plate (#2) up to the bottom of the permanent mount, line up the holes and loosely bolt together using four 5/16" x 3/4" hex bolts (#9), 5/16" flat washers (#13) and 5/16" nylock nuts (#12). Place a 5/16" u-bolt (#8) around each bumper support tube and into the holes towards the ends of the lower wing plate. Secure in place with 5/16" flat washers (#13) and 5/16" nylock nuts (#12). You can now tighten the nuts/bolts.
4. This RM4 plow system will require the use of the pulley kit (sold separately). If you do not have an aftermarket bumper or front rack there will be nowhere to hook the winch cable. In this case we have included a winch hook bracket (#3) for you.

Place the winch hook bracket on the backside at the top of the metal framework. You will see a series of holes, align the right hole in the bracket with the bottom right hole of the framework. The left side hole will now line up with the left bottom inner hole of the framework. Bolt into place using two 3/8" x 1" hex bolts (#14) and 3/8" nylock nuts (#11). See Illustration.

5. The front plastic bumper cover will need part of the lower center section removed for clearance with the RM4. Loosely reinstall the bumper cover and slide the removable mount into place to mark the plastic where it needs to be cut out. You will also need to cut out a hole for the winch cable bracket if installed. Use a sharp knife, hacksaw, or other cutting tool to cut out the center section. Do not cut out the lower mounting holes. Reinstall the bumper cover.

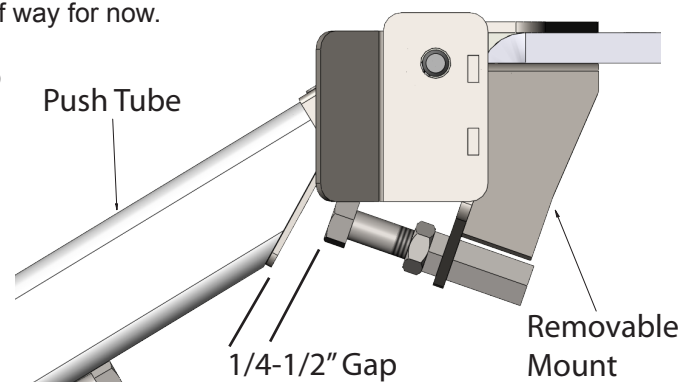
6. Install the 1/2" bolts (#5) and 1/2" nuts (#6) into the front of the removable mount (#4). These are used as droop stops to keep the plow from dropping down too far. Thread them in about half way for now.

7. Slide the removable mount into the permanent mount and pin into place with the included hitch pin (#15). You can now install the blade and push tube to the mount.

8. Once the complete plow assembly has been installed on the machine, put the blade straight and on the ground. Adjust both droop stop bolts so there is 1/4" to 1/2" clearance between the bolt heads and the bottom of the push tube. Tighten the lock nuts.

NOTE: Failure to properly adjust the droop stop bolts can put excessive load on the mount, the machine, and winch. This may cause damage and will not be warranted.

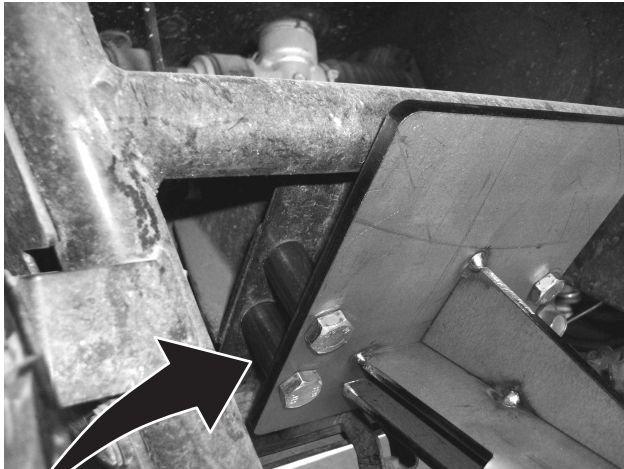
Ref.	Qty.	Part#	Description
1	1	2494-100	Permanent Mount
2	1	2494-06	Lower Wing Plate
3	1	2494-08	Winch Hook Bracket
4	1	2493-101	Removable Mount
5	2	HDW9110	1/2" x 2" Hex Bolt
6	2	HDW7078	1/2" Nut
7	4	FG2494	1-1/4" Spacer
8	2	HDW2150	1-1/8" x 1-3/4" U-Bolt
9	4	HDW2050	5/16" x 3/4" Hex Bolt
10	4	HDW1074	M10 x 55mm Hex Bolt
11	2	HDW7061	3/8" Nylock Nut
12	8	HDW7058	5/16" Nylock Nut
13	8	HDW9002	5/16" Flat Washer
14	2	HDW2100	3/8" x 1" Hex Bolt
15	1	HDW9185	Hitch Pin



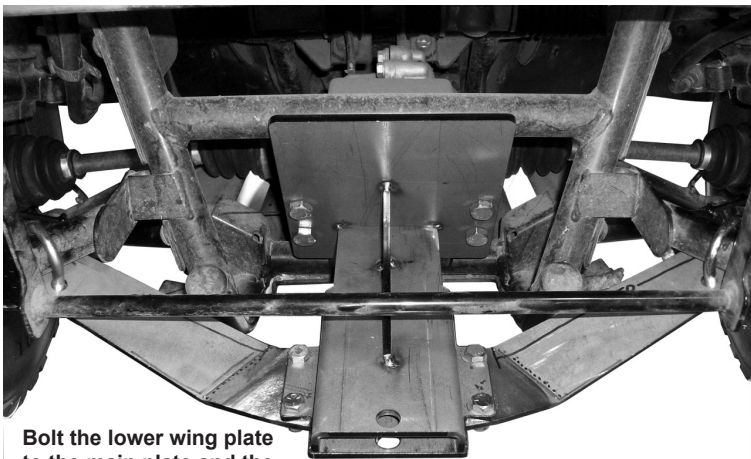
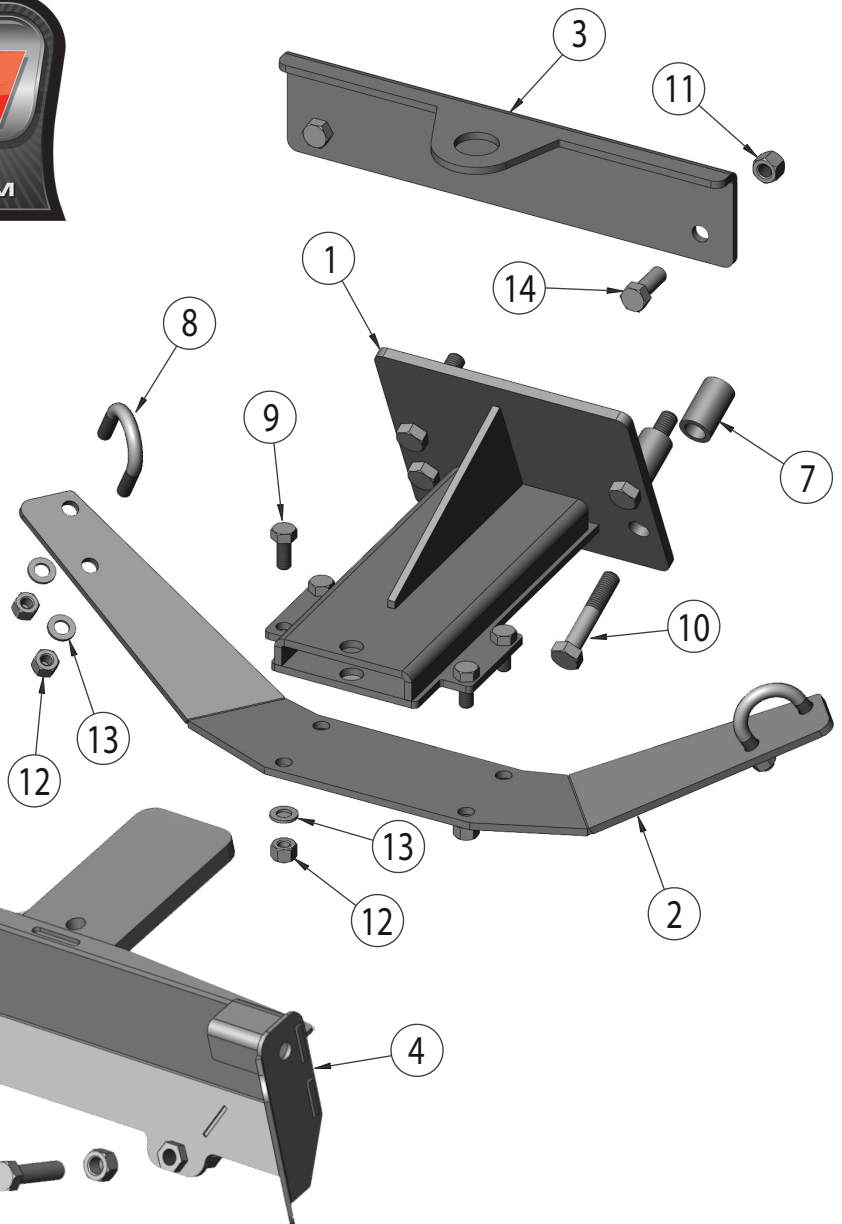
FOR QUESTIONS OR COMMENTS PLEASE CALL THE MANUFACTURER: **763-689-4800**

All images used are copyrighted property of CMP and may not be used without permission.

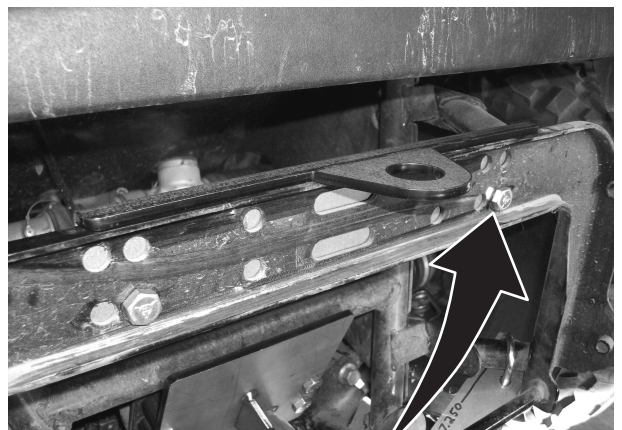
Inst2494 09/26/2012



Mount installed using the M10 x 55mm hex bolts and 1.5" spacers.



Bolt the lower wing plate to the main plate and the outer bumper support tubes.



Bolt the winch hook plate to the holes in the framework

WARNING!

THIS MOUNT KIT IS DESIGNED TO WITHSTAND NORMAL PLOWING FORCES AT A MAXIMUM SPEED OF 5 MPH. EXCESSIVE PLOWING SPEED OR IMPACTING IMMOVABLE OBJECTS MAY DAMAGE THE PLOW, MACHINE, OR OPERATOR AND WILL NOT BE WARRANTED. THIS PLOW SYSTEM IS COVERED BY A ONE YEAR WARRANTY FROM DEFECTS IN MANUFACTURING. PLEASE CONTACT THE MANUFACTURER AT THE NUMBER LISTED BELOW FOR ANY POSSIBLE WARRANTY CLAIMS. BENT OR BROKEN COMPONENTS FROM ABUSE OR EXCESSIVE SPEED WILL NOT BE WARRANTED.

FOR QUESTIONS OR COMMENTS PLEASE CALL THE MANUFACTURER: **763-689-4800**

All images used are copyrighted property of CMP and may not be used without permission.

Inst2494 09/26/2012