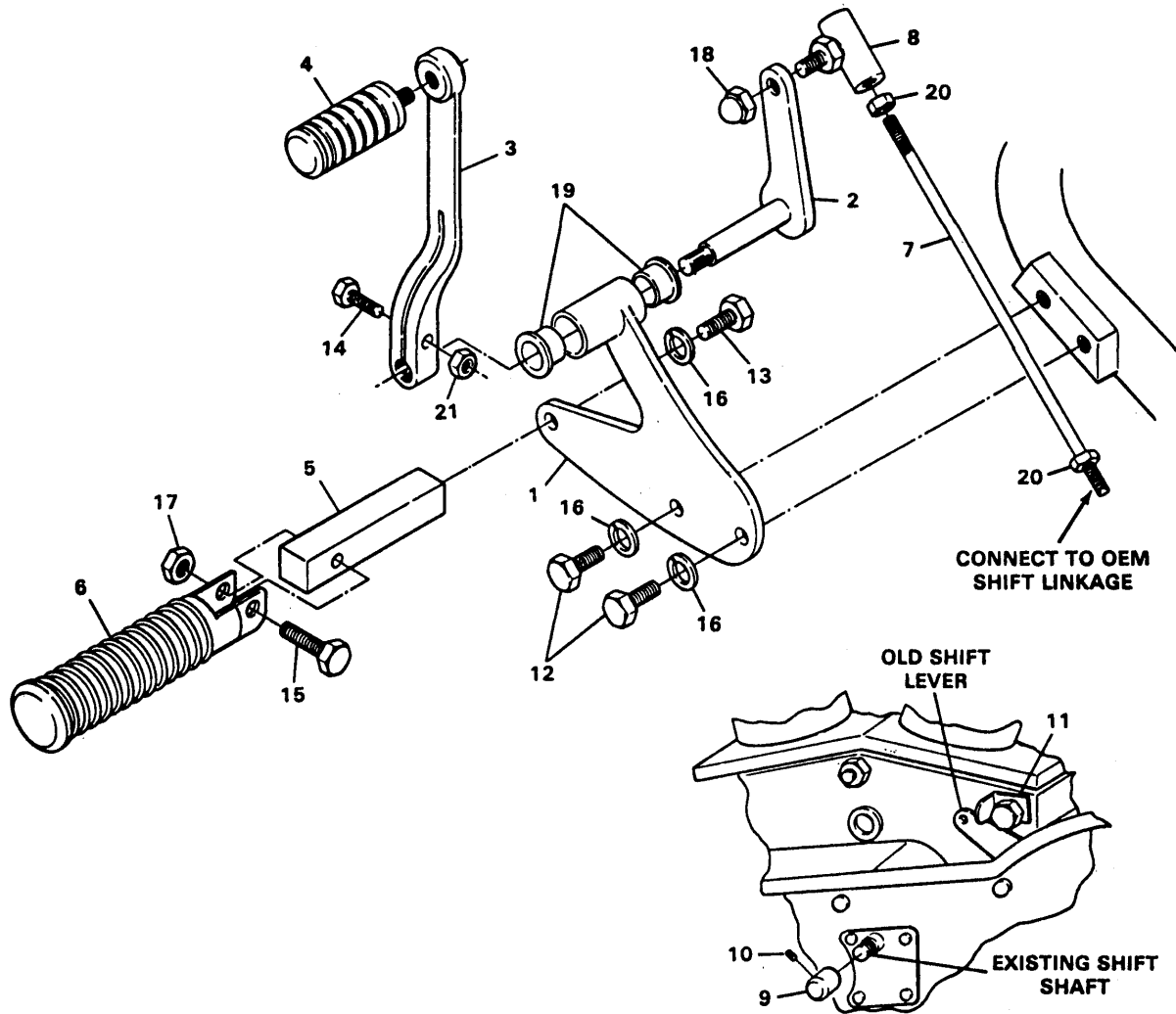




# EXPLODED INSTRUCTIONS

## FORWARD CONTROLS FOR 82-94 FXR P/N DS-243485



### LEFT SIDE

ITEM	DESCRIPTION	QTY.
1	Shifter plate assembly	1
2	Shifter arm/shaft weldment	1
3	Shift lever	1
4	Shift peg	1
5	Short 5/8" footpeg extension	1
6	Sundance peg	1
7A	Shift rod, two right threads	1
7B	Shift rod, one right and one left thread	1
8	OEM ball joint (not provided)	0
9	Chrome shift shaft cover	1
10	Set screw, 1/4"-20	1

ITEM	DESCRIPTION	QTY.
11	Shift arm stop	1
12	Bolt, 3/8"-16 x 3/4"	2
13	Bolt, 3/8"-16 x 1"	1
14	Bolt, 5/16"-24 x 1 1/4"	1
15	Bolt, 1/4"-20 x 1 1/4"	1
16	Lock washer, 3/8"	3
17	Nut, 1/4"-20 self-locking	1
18	Acorn nut, 5/16"-24	1
19	Bushings	2
20	Nut, 5/16"-24	2
21	Nut, 5/16"-24 self-locking	1

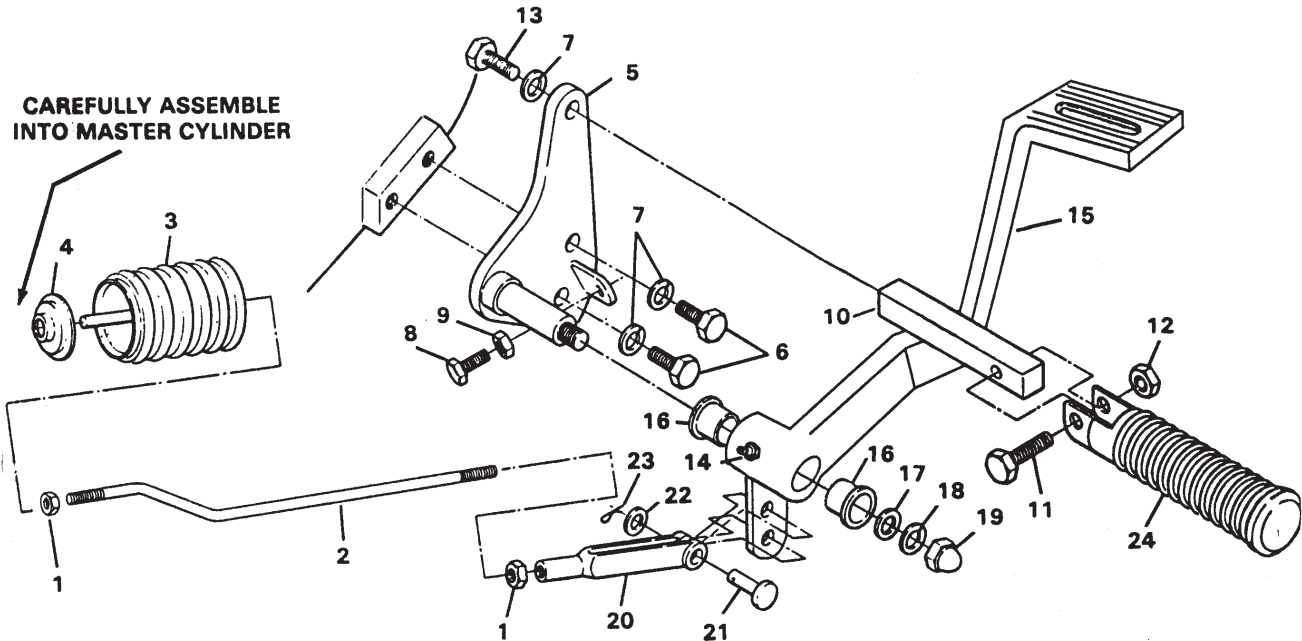
## DRAG SPECIALTIES

Box 9336, Minneapolis, MN 55440

# EXPLODED INSTRUCTIONS

## FORWARD CONTROLS FOR 82-94 FXR P/N DS-243485

CAREFULLY ASSEMBLE  
INTO MASTER CYLINDER



### RIGHT SIDE

ITEM	DESCRIPTION	QTY.
1	Nut, 5/16"-24	2
2	Brake rod	1
3	OEM plunger with boot (not provided)	0
4	OEM cup washer (not provided)	0
5	Brake plate assembly	1
6	Bolt, 3/8"-16 x 3/4"	2
7	Lock washer, 3/8"	3
8	Bolt, 5/16"-24 x 3/4"	1
9	Jam nut 5/16"-24	1
10	Long 5/8" footpeg extension	1
11	Bolt, 1/4"-20 x 1 1/4"	1
12	Nut, 1/4"-20 self-locking	1

ITEM	DESCRIPTION	QTY.
13	Bolt 3/8"-16 x 1"	1
14	Grease fitting	1
15	Brake pedal	1
16	Bushings	2
17	Flat washer, 1/2"	1
18	Lock washer, 1/2"	1
19	Acorn nut, 1/2"-20	1
20	Clevis	1
21	Clevis pin	1
22	Flat washer, 1/4"	1
23	Cotter pin	1
24	Sundance peg	1

### DRAG SPECIALTIES

Box 9336, Minneapolis, MN 55440