



THOR

TH
OR
16



ALL IN

After every image has been shared, every detail analyzed, every opinion voiced, and every race run, there is still that one space that exists where there is only man and machine. The last bastion of solitude and joy that can only be found when riding your dirt bike.

Once you've experienced it, there's simply no turning back, no undoing of what you've done, no unfeeling of what you've felt, no magic spell to take you back to who you were before you started riding. You've become one of us. Welcome.



CONTENTS

HELMETS/GOGGLES 4
 16 GOGGLES

MEN'S RACEWEAR 28
 28 CORE
 40 PRIME
 46 PHASE

OUTER LAYER 60
 62 RANGE JACKETS & PANTS
 64 JACKETS / OFF ROAD GEAR

GLOVES 68
COVERAGE 80
 84 ROOST DEFLECTORS
 88 KNEEGUARDS / ELBOWGUARDS
 91 BELTS

BASE LAYER 92
 94 COMP GEAR

BOOTS 96
 101 SOCKS

BAGS 102
 106 HYDRATION PACKS

MEN'S SPORTSWEAR 110
 112 JACKETS & HOODIES
 116 TEES
 122 HATS & BEANIES

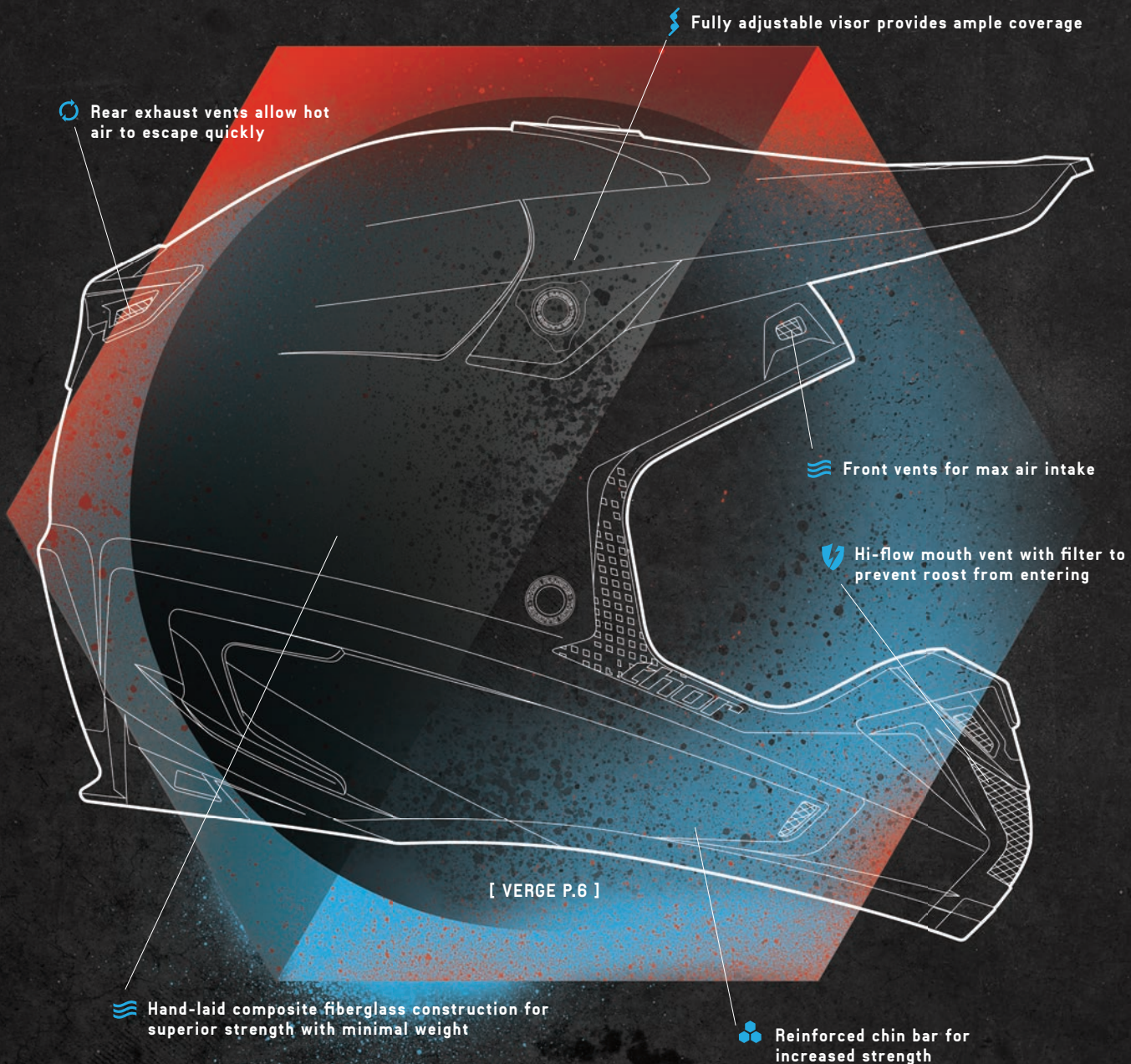
YOUTH 124
 126 RACEWEAR
 136 GLOVES
 138 GOGGLES
 140 ROOST DEFLECTORS
 141 BELTS / GUARDS
 142 BOOTS
 143 SOCKS

YOUTH SPORTSWEAR 144
WOMEN'S 152
 154 RACEWEAR
 156 OFF ROAD
 158 GLOVES
 159 BOOTS / DEFLECTOR

WOMEN'S SPORTSWEAR 160
 160 HOODIES
 163 TEES

ACCESSORIES 166
STICKERS/DECALS 167
SIZING 168
PRODUCT MATRIX 170

HELMETS



The most essential piece of equipment, your helmet needs to be the right balance of coverage, comfort, and cooling to keep you performing at your peak. Put your trust in the same helmet worn by multi-time champion Ryan Villopoto. The Verge has been on the top step of the podium at Supercross, Motocross, MXGP, and everything in between. Developed with extensive input from Ryan and our team riders, the Verge incorporates a dual density liner for improved energy absorption, a hand-laid composite shell for extreme light weight and reduced rider fatigue, and incorporates an extensive internal and external venting system for superior cooling. The Verge helmet is ECE 22.05 and DOT approved and conforms to all AMA and FIM competition standards.

RYAN VILLOPOTO

SAFETY WARNING: riding a motorcycle is a dangerous activity. When riding, always wear a helmet, eye protection and protective clothing. There is no assurance that serious injury or death can be avoided even if you wear the product shown in this catalog and take all the precautions to avoid every risk. Please ensure that your THOR products fit properly. Improperly fitting products can impair your ability to control your motorcycle.

HELMETS
VERGE REBOUND

\$324.95



2.8 LBS. (1286 GRAMS)
 SIZE MEDIUM

FLO ORANGE / BLACK

HELMET	XS	S	M	L	XL	2XL
0110 -	4290	4291	4292	4293	4294	4295



BACK 3/4



TOP



BACK



HELMETS
VERGE REBOUND

\$324.95



2.8 LBS. (1286 GRAMS)
 SIZE MEDIUM

FLO GREEN / BLACK

HELMET	XS	S	M	L	XL	2XL
0110 -	4284	4285	4286	4287	4288	4289



BACK 3/4



TOP



BACK



2.8 LBS. (1286 GRAMS)
SIZE MEDIUM

WHITE / GRAY (MATTE FINISH)

HELMET	XS	S	M	L	XL	2XL
0110	4296	4297	4298	4299	4300	4301



BACK 3/4



TOP



BACK



HELMETS
VERGE TACH

\$324.95





2.8 LBS. (1286 GRAMS)
SIZE MEDIUM

BLACK / WHITE (MATTE FINISH)

HELMET	XS	S	M	L	XL	2XL
0110 -	4314	4315	4316	4317	4318	4319



TOP



BACK 3/4



BACK



2.8 LBS. (1286 GRAMS)
SIZE MEDIUM

FLO GREEN / GRAY (MATTE FINISH)

HELMET	XS	S	M	L	XL	2XL
0110 -	4320	4321	4322	4323	4324	4325



TOP



BACK 3/4



BACK

HELMETS
VERGE SCENDIT

\$324.95



2.8 LBS. (1286 GRAMS)
SIZE MEDIUM

BLUE / SILVER

HELMET	XS	S	M	L	XL	2XL
0110 -	4302	4303	4304	4305	4306	4307



2.8 LBS. (1286 GRAMS)
SIZE MEDIUM

NAVY / ORANGE

HELMET	XS	S	M	L	XL	2XL
0110 -	4308	4309	4310	4311	4312	4313

HELMETS
VERGE CONVERGE

\$324.95



2.8 LBS. (1286 GRAMS)
SIZE MEDIUM

RED / BLACK

HELMET	XS	S	M	L	XL	2XL
0110 -	4278	4279	4280	4281	4282	4283

HELMETS
VERGE SOLIDS

\$299.95

THOR
16



2.8 LBS. (1286 GRAMS)
SIZE MEDIUM

MATTE BLACK

HELMET	XS	S	M	L	XL	2XL
0110 -	3344	3345	3346	3347	3348	3349



TOP



BACK 3/4



BACK



2.8 LBS. (1286 GRAMS)
SIZE MEDIUM

WHITE

HELMET	XS	S	M	L	XL	2XL
0110 -	3350	3351	3352	3353	3354	3355



TOP

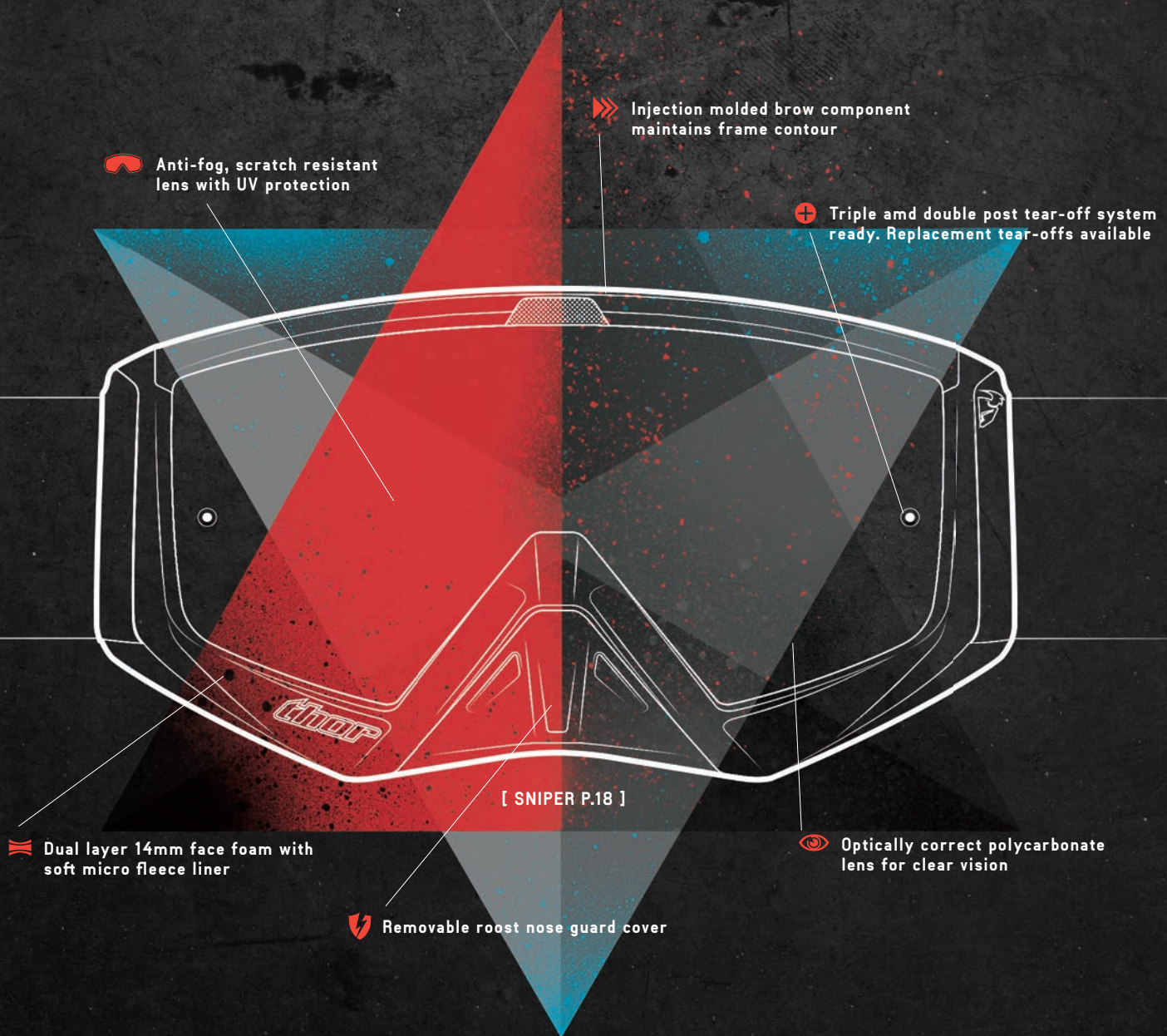


BACK 3/4



BACK

GOGGLES



Keep your focus on what's ahead with a vision system that's designed and developed for maximum performance. With multiple frame styles and lens options, you can rest assured that we have the goggle that fits your riding style and conditions. From sand, to mud, dirt and dust, we've got you covered with a system that will keep you seeing clearly.



GOGGLES SNIPER

\$59.95

- Injection molded brow component maintains frame contour
- Innovative frame with maximum airflow vents
- Drilled frame ports for increased ventilation and fog resistance
- Anti-fog, scratch resistant lens with UV protection
- Optically correct polycarbonate lens for clear vision
- Clear spare lens included. Replacement lenses available

- Triple post tear-off system ready. Replacement tear-offs available
- Removable roost nose guard cover
- Dual layer 14mm face foam with soft micro fleece liner
- Adjustable woven strap with silicone grip for secure fit
- Unique flush mounted strap covers for added retention
- Plush goggle bag included for safe storage
- Tested and certified according to European Standard EN 1938:2010

TESTED & CERTIFIED 



CHASE ORANGE/WHITE
2601-1937



CHASE LIME/WHITE
2601-1936



CHASE BLACK/RED
2601-1935



WARSHIP CHARCOAL/ORANGE
2601-1942



WARSHIP SAND/BLACK
2601-1940



BARRED RED/WHITE
2601-1934



BARRED BLUE/WHITE
2601-1933



BARRED WHITE/BLACK
2601-1932



GEO YELLOW/BLACK
2601-1938



GEO NAVY/ORANGE
2601-1939



CARBON WHITE/BLACK
2601-1941

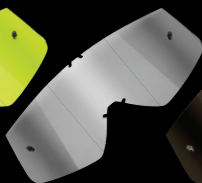
SNIPER ACCESSORIES



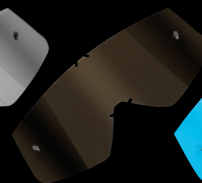
IRIDIUM
2602-0595
\$14.95



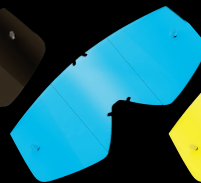
MIRROR/LIME
2602-0594
\$14.95



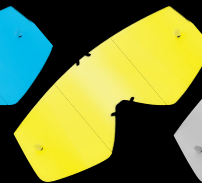
MIRRORED
2602-0593
\$14.95



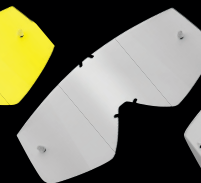
SMOKE
2602-0592
\$6.95



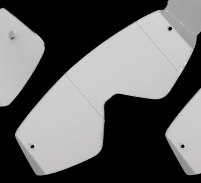
BLUE
2602-0590
\$6.95



YELLOW
2602-0591
\$6.95



CLEAR
2602-0589
\$6.95



TEAR OFF CLEAR
(10PK) 2602-0598
\$6.95



TEAR OFF LAMINATED
(14PK) 2602-0599
\$19.95

GOGGLES CONQUER

\$39.95

- Innovative frame with maximum airflow vents
- Drilled frame ports for increased ventilation and fog resistance
- Anti-fog, scratch resistant lens with UV protection
- Optically correct polycarbonate lens for clear vision
- Clear lens mounted. Replacement lenses available
- Dual post tear-off system ready. Replacement tear-offs available
- Dual layer 14mm face foam with soft micro fleece liner
- Adjustable woven strap with silicone grip for secure fit
- Plush goggle bag included for safe storage
- Tested and certified according to European Standard EN 1938:2010

TESTED & CERTIFIED 



GUNMETAL/GREEN
2601-1929



YELLOW/BLACK
2601-1931



BLUE/WHITE
2601-1928



ORANGE/NAVY
2601-1925



STEEL/BLACK
2601-1930



BLACK/WHITE
2601-1924



RED/WHITE
2601-1927



PINK/WHITE
2601-1926



BLACK/RED ORANGE
3512-0191 - (BARRON GOGGLE BAG P.109)

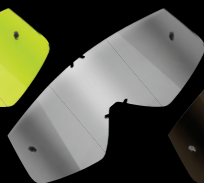
CONQUER
ACCESSORIES



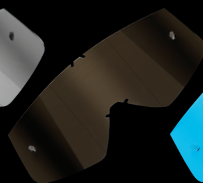
IRIDIUM
2602-0595
\$14.95



MIRROR/LIME
2602-0594
\$14.95



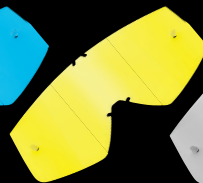
MIRRORED
2602-0593
\$14.95



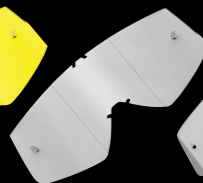
SMOKE
2602-0592
\$6.95



BLUE
2602-0590
\$6.95



YELLOW
2602-0591
\$6.95



CLEAR
2602-0589
\$6.95



TEAR OFF CLEAR
(10PK) 2602-0612
\$6.95



TEAR OFF LAMINATED
(14PK) 2602-0613
\$19.95

GOGGLES ALLY

\$64.95

- Innovative frame with aperture vent for maximum airflow
- Drilled frame ports for increased ventilation and fog resistance
- Four additional interchangeable vent inserts included
- Anti-fog, scratch resistant lenses with UV protection
- Optically correct polycarbonate lenses for clear vision
- Mirrored smoke lens mounted, spare clear lens included
- Replacement lenses available

- Triple post tear-off system ready
- Replacement tear-offs available
- Removable roost nose guard cover
- Double layer 15mm face foam with soft micro fleece liner
- Adjustable woven strap with silicone grip for secure fit
- Plush goggle bag included for safe storage
- Tested and certified according to European Standard EN 1938:2010

TESTED & CERTIFIED 



BEND
2601-1892



PRISM
2601-1894



TRACE
2601-1893



SCORPIO
2601-1462



TRANS BLUE
2601-1890
\$59.95



TRANS GREEN
2601-1891
\$59.95

ALLY ACCESSORIES



- | | | | | | | | | | | |
|----------------------------------------|-------------------------------------------|-------------------------------------------|-------------------------------------------|-------------------------------------------|-----------------------------------------|------------------------------------------|--------------------------------------------|-----------------------------------------------|-----------------------------------------------------|----------------------------------------------------------|
| IRIDIUM
2602-0554
\$14.95 | CLEAR/BLACK
2602-0225
\$6.95 | CLEAR/WHITE
2602-0226
\$6.95 | MIRROR/BLK
2602-0227
\$14.95 | MIRROR/WHT
2602-0228
\$14.95 | SMOKE/WHT
2602-0229
\$6.95 | BLUE/WHITE
2602-0230
\$6.95 | YELLOW/WHITE
2602-0231
\$6.95 | DUAL-PANE LENS
2602-0232
\$14.95 | TEAR OFF CLEAR
(10PK) 2602-0233
\$6.95 | TEAR OFF LAMINATED
(14PK) 2602-0237
\$19.95 |
|----------------------------------------|-------------------------------------------|-------------------------------------------|-------------------------------------------|-------------------------------------------|-----------------------------------------|------------------------------------------|--------------------------------------------|-----------------------------------------------|-----------------------------------------------------|----------------------------------------------------------|

BOMBER

\$59.95

- Innovative frame with aperture vent for maximum airflow
- Drilled frame ports for increased ventilation and fog resistance
- Replaceable flap that diverts mud and moisture
- Clear film canisters for quick viewing of remaining quantity
- Two rolls of clear film included, replacement film available
- Anti-fog, scratch resistant lens with UV protection
- Optically correct polycarbonate lens for clear vision
- Includes additional clear lens with dual tear-off posts
- Double layer 15mm face foam with soft micro fleece liner
- Adjustable woven strap with silicone grip for secure fit
- Plush goggle bag included for safe storage
- Tested and certified according to European Standard EN 1938:2010

TESTED & CERTIFIED 



TOTAL VISION SYSTEM
(CLEAR) 2602-0330
\$24.95



AMMO 6 PACK
2602-0329
\$8.95



REPLACEMENT LENS
2602-0327
\$6.95



MUD FLAPS 5 PACK
2602-0328
\$6.95



FLO GREEN/BLACK
2601-1903



BLACK/WHITE
2601-1831

ENEMY SAND

\$29.95

- Sand resistant high density foam to prevent fine particles
- Innovative frame with aperture vent for maximum airflow
- Drilled frame ports for increased ventilation and fog resistance
- Anti-fog, scratch resistant lens with UV protection
- Optically correct polycarbonate lens for clear vision
- Smoke lens included. Replacement lenses available
- Dual post tear-off system ready. Tear-off packs available
- Single layer 12mm face foam for secure seal
- Adjustable woven strap with silicone grip for secure fit
- Plush goggle bag included for safe storage
- Supports Bomber Total Vision System. Sold separately
- Tested and certified according to European Standard EN 1938:2010

TESTED & CERTIFIED 



FLO ORANGE/BLACK
2601-1895



RED/BLACK
2601-1896



BLACK/WHITE
2601-1467



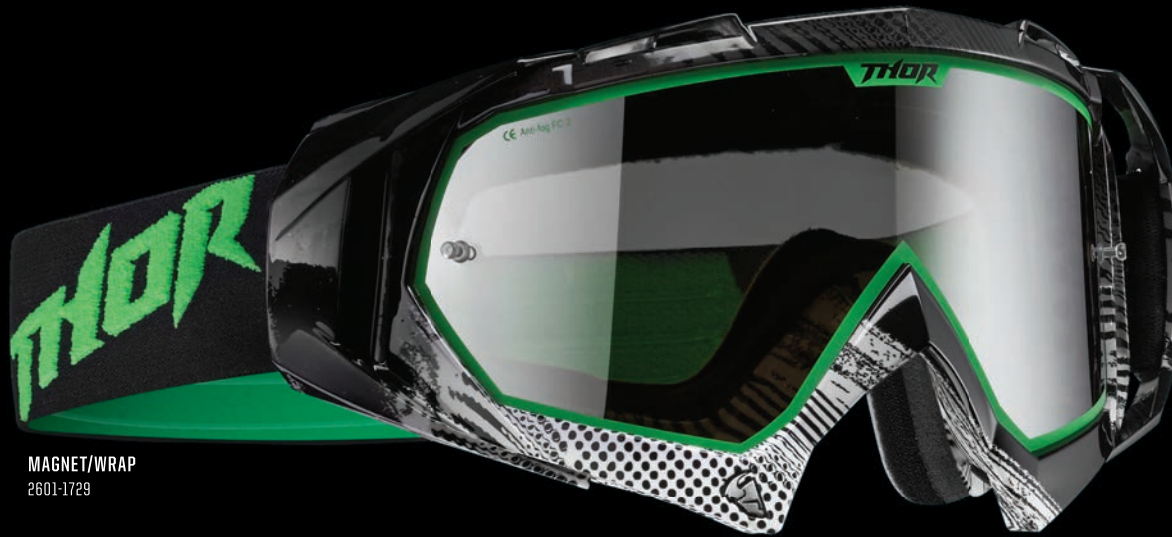
WHITE/BLACK
2601-1468

GOGGLES HERO WRAP

\$54.95

- Innovative frame with aperture vent for maximum airflow
- Drilled frame ports for increased ventilation and fog resistance
- Anti-fog, scratch resistant lenses with UV protection
- Optically correct polycarbonate lenses for clear vision
- Mirrored smoke lens mounted, spare clear lens included
- Replacement lenses available
- Dual post tear-off system ready
- Tear-off packs available
- Double layer 15mm face foam with soft micro fleece liner
- Outrigger positioning system ensures perfect fit
- Adjustable woven strap with silicone grip for secure fit
- Plush goggle bag included for safe storage
- Tested and certified according to European Standard EN 1938:2010

TESTED & CERTIFIED 



MAGNET/WRAP
2601-1729



DRIZZLE/WRAP
2601-1888



EROSION/WRAP
2601-1887



RIFT/WRAP
2601-1889

HERO

\$49.95

THOR
16



BLUE/WHITE
2601-1727



TRANS/BLACK
2601-0699



FLAT/BLACK
2601-0696



RED/BLACK
2601-0692



WHITE/ORANGE
2601-0698



BLACK/GREEN
2601-1051

HERO ACCESSORIES



- | | | | | | | | | | | | |
|---------------------------------|------------------------------------|------------------------------------|------------------------------------|------------------------------------|----------------------------------|---------------------------------|-----------------------------------|-----------------------------------------|-----------------------------------------|----------------------------------------------|---------------------------------------------------|
| IRIDIUM
2602-0555
\$14.95 | CLEAR/BLACK
2602-0143
\$6.95 | CLEAR/WHITE
2602-0150
\$6.95 | MIRROR/BLK
2602-0145
\$14.95 | MIRROR/WHT
2602-0152
\$14.95 | SMOKE/WHT
2602-0144
\$6.95 | BLUE/WHT
2602-0178
\$6.95 | YELLOW/WHT
2602-0179
\$6.95 | DUAL-PANE CLEAR
2602-0177
\$14.95 | DUAL-PANE SMOKE
2602-0601
\$14.95 | TEAR OFF CLEAR
(10PK) 2602-0148
\$6.95 | TEAR OFF LAMINATED
(14PK) 2602-0658
\$19.95 |
|---------------------------------|------------------------------------|------------------------------------|------------------------------------|------------------------------------|----------------------------------|---------------------------------|-----------------------------------|-----------------------------------------|-----------------------------------------|----------------------------------------------|---------------------------------------------------|

GOGGLES

ENEMY PRINTED & FLUORESCENT

\$29.95

- Innovative frame with aperture vent for maximum airflow
- Drilled frame ports for increased ventilation and fog resistance
- Anti-fog, scratch resistant lens with UV protection
- Optically correct polycarbonate lens for clear vision
- Clear lens included, replacement lenses available

- Dual post tear-off system ready. Tear-off packs available
- Single layer 12mm face foam for secure seal
- Adjustable woven strap with silicone grip for secure fit
- Plush goggle bag included for safe storage
- Supports Bomber Total Vision System. Sold Separately
- Tested and certified according to European Standard EN 1938:2010

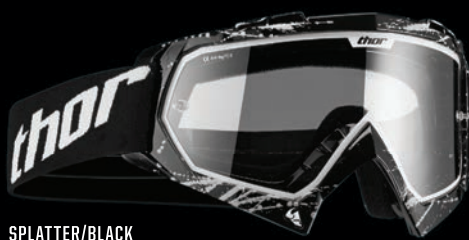
TESTED & CERTIFIED 



FLO GREEN/BLACK
2601-1734



FLO ORANGE/BLACK
2601-1735



SPLATTER/BLACK
2601-1469



WEB/WHITE
2601-1470



TREAD/RED
2601-1731



TREAD/YELLOW
2601-1732



SPLATTER/GREEN
2601-1733

ENEMY SOLID

\$24.95

THOR
16



BLUE/WHITE
2601-0711



RED/BLACK
2601-0710



YELLOW/BLACK
2601-0714



PINK/BLACK
2601-0712



WHITE/BLACK
2601-0708



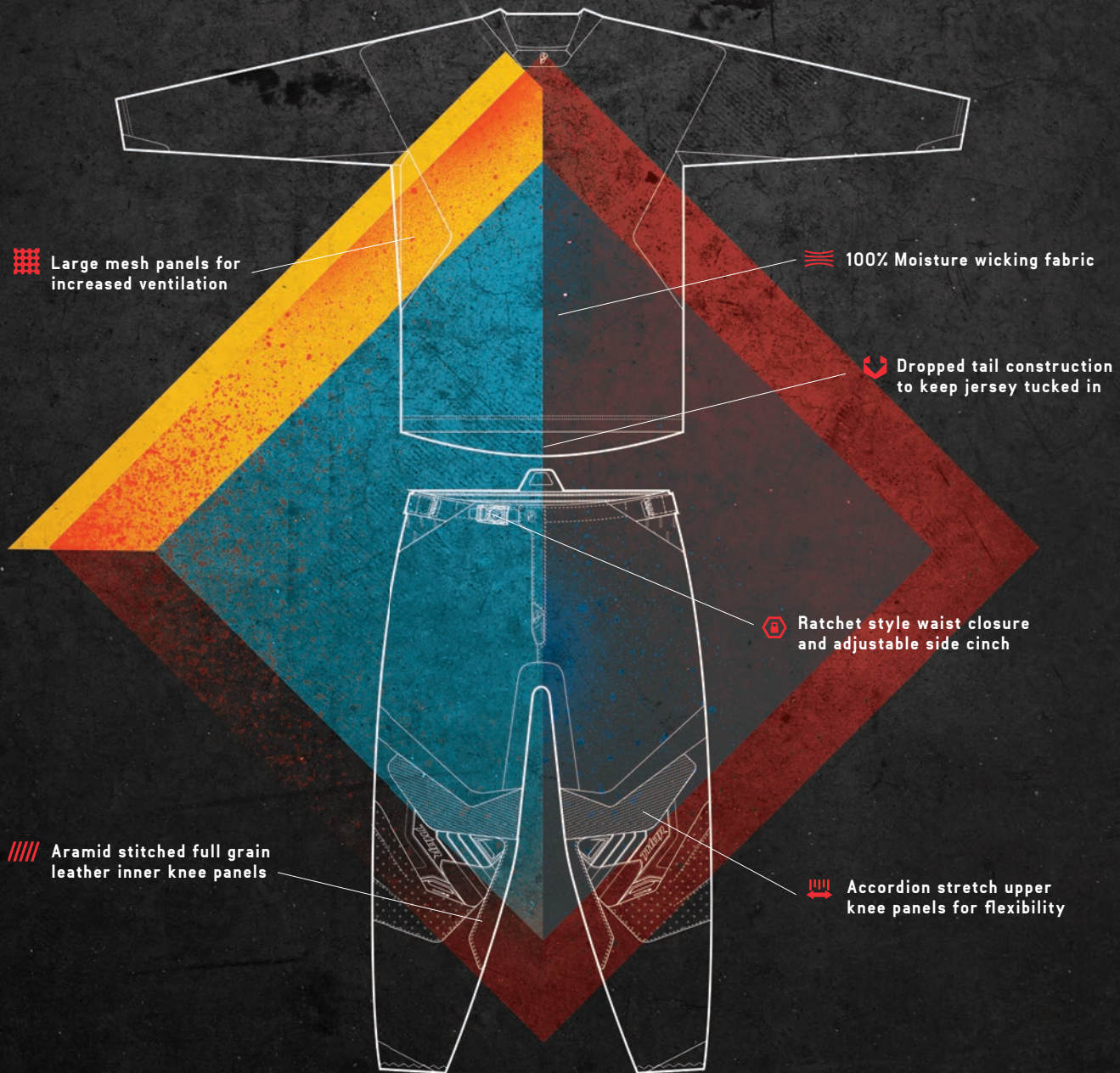
BLACK/WHITE
2601-0709

ENEMY ACCESSORIES



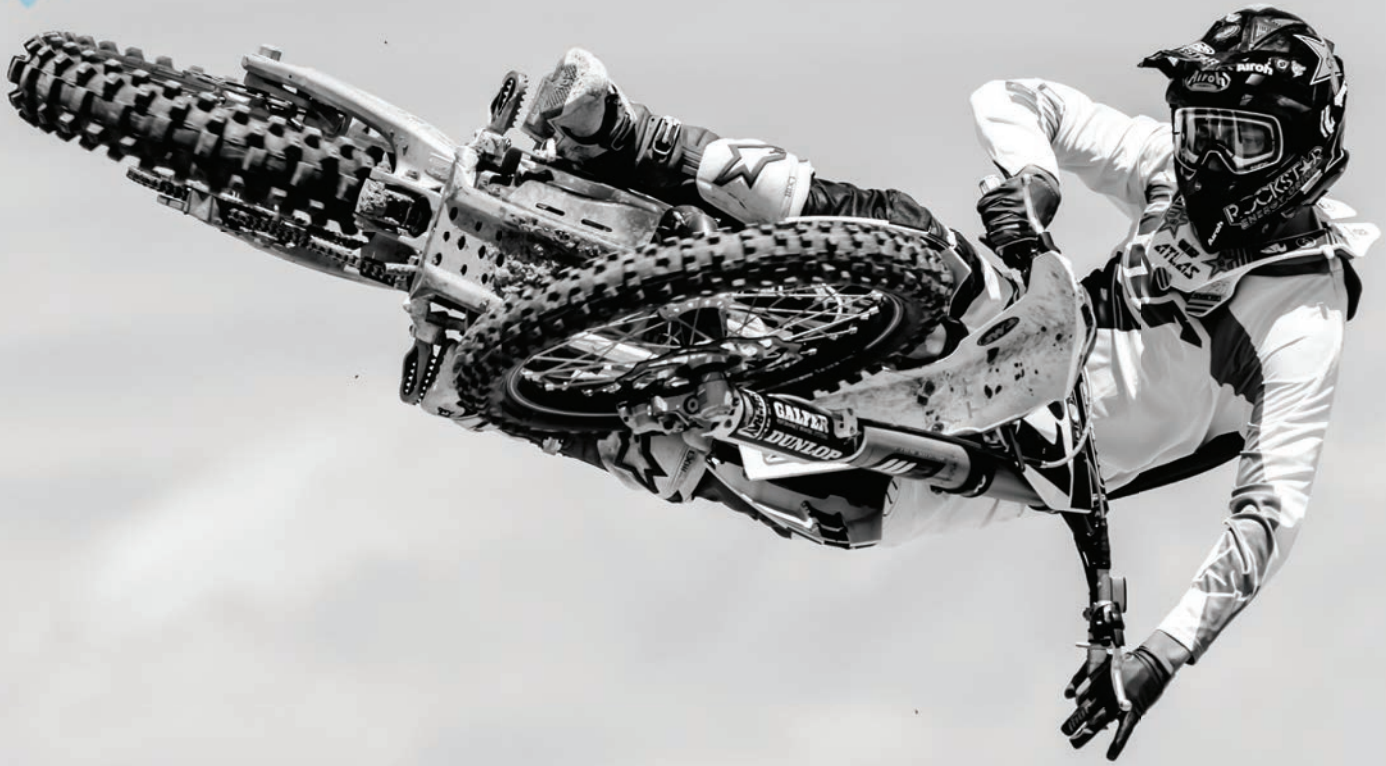
IRIDIUM 2602-0555 \$14.95	CLEAR/BLACK 2602-0143 \$6.95	CLEAR/WHITE 2602-0150 \$6.95	MIRROR/BLK 2602-0145 \$14.95	MIRROR/WHT 2602-0152 \$14.95	SMOKE/WHT 2602-0144 \$6.95	BLUE/WHT 2602-0178 \$6.95	YELLOW/WHT 2602-0179 \$6.95	DUAL-PANE CLEAR 2602-0177 \$14.95	DUAL-PANE SMOKE 2602-0601 \$14.95	TEAR OFF CLEAR (10PK) 2602-0148 \$6.95	TEAR OFF LAMINATED (14PK) 2602-0658 \$19.95
---------------------------------	------------------------------------	------------------------------------	------------------------------------	------------------------------------	----------------------------------	---------------------------------	-----------------------------------	-----------------------------------------	-----------------------------------------	----------------------------------------------	---------------------------------------------------

CORE RACEWEAR



[CORE P.31]

Championship winning riders need gear that delivers top level performance, superior fitment, and excellent breathability. Core Racewear delivers on all fronts and brings legendary durability and racing heritage to the table. Constructed of the finest materials and developed with input from our top riders, Core gear is purpose built to perform at the highest level of competition. Every stitch, every panel, every nuance has been carefully refined to deliver a product that exceeds your expectations.



JASON ANDERSON



JASON ANDERSON

MEN'S RACEWEAR
CORE MERGE

JERSEY \$49.95 PANT \$159.95

THOR
16



WHITE / PURPLE

JERSEY	S	M	L	XL	2XL	3XL			
2910 -	3460	3461	3462	3463	3464	3465			
PANT	28	30	32	34	36	38	40	42	44
2901 -	5179	5180	5181	5182	5183	5184	5185	5186	5187

NAVY / LIME

JERSEY	S	M	L	XL	2XL	3XL			
2910 -	3454	3455	3456	3457	3458	3459			
PANT	28	30	32	34	36	38	40	42	44
2901 -	5170	5171	5172	5173	5174	5175	5176	5177	5178

BLACK / RED

JERSEY	S	M	L	XL	2XL	3XL			
2910 -	3448	3449	3450	3451	3452	3453			
PANT	28	30	32	34	36	38	40	42	44
2901 -	5161	5162	5163	5164	5165	5166	5167	5168	5169

MEN'S RACEWEAR
CORE HUX

JERSEY \$49.95 PANT \$159.95



BLACK / FLO ORANGE

JERSEY	S	M	L	XL	2XL	
2910 -	3476	3477	3478	3479	3480	
PANT	28	30	32	34	36	38
2901 -	5200	5201	5202	5203	5204	5205

BLACK / FLO GREEN

JERSEY	S	M	L	XL	2XL	
2910 -	3471	3472	3473	3474	3475	
PANT	28	30	32	34	36	38
2901 -	5194	5195	5196	5197	5198	5199

WHITE / BLACK

JERSEY	S	M	L	XL	2XL	
2910 -	3466	3467	3468	3469	3470	
PANT	28	30	32	34	36	38
2901 -	5188	5189	5190	5191	5192	5193



JOEY SAVATGY



BROC TICKLE



MEN'S RACEWEAR
CORE CONTRO

JERSEY \$49.95 PANT \$159.95



WHITE / RED

JERSEY	S	M	L	XL	2XL	
2910 -	3443	3444	3445	3446	3447	
PANT	28	30	32	34	36	38
2901 -	5155	5156	5157	5158	5159	5160

NAVY / FLO ORANGE

JERSEY	S	M	L	XL	2XL	
2910 -	3438	3439	3440	3441	3442	
PANT	28	30	32	34	36	38
2901 -	5149	5150	5151	5152	5153	5154

KELLY GREEN / YELLOW

JERSEY	S	M	L	XL	2XL	
2910 -	3433	3434	3435	3436	3437	
PANT	28	30	32	34	36	38
2901 -	5143	5144	5145	5146	5147	5148



ADAM CIANCIARULO

MEN'S RACEWEAR
CORE AIR DIVIDE

JERSEY \$59.95 PANT \$169.95



BLACK / FLUORESCENT

JERSEY	S	M	L	XL	2XL	
2910-	3481	3482	3483	3484	3485	
PANT	28	30	32	34	36	38
2901-	5206	5207	5208	5209	5210	5211

BLACK / MULTI

JERSEY	S	M	L	XL	2XL	
2910-	3486	3487	3488	3489	3490	
PANT	28	30	32	34	36	38
2901-	5212	5213	5214	5215	5216	5217

JERSEY

- Purpose built Core race jersey with additional venting for superior airflow
- Fully Vented back panel
- Reinforced chest perforations
- Athletic stretch-rib cuff panels
- Dropped tail construction to keep jersey tucked in
- 100% moisture wicking polyester fabric
- No-fade sublimated graphics

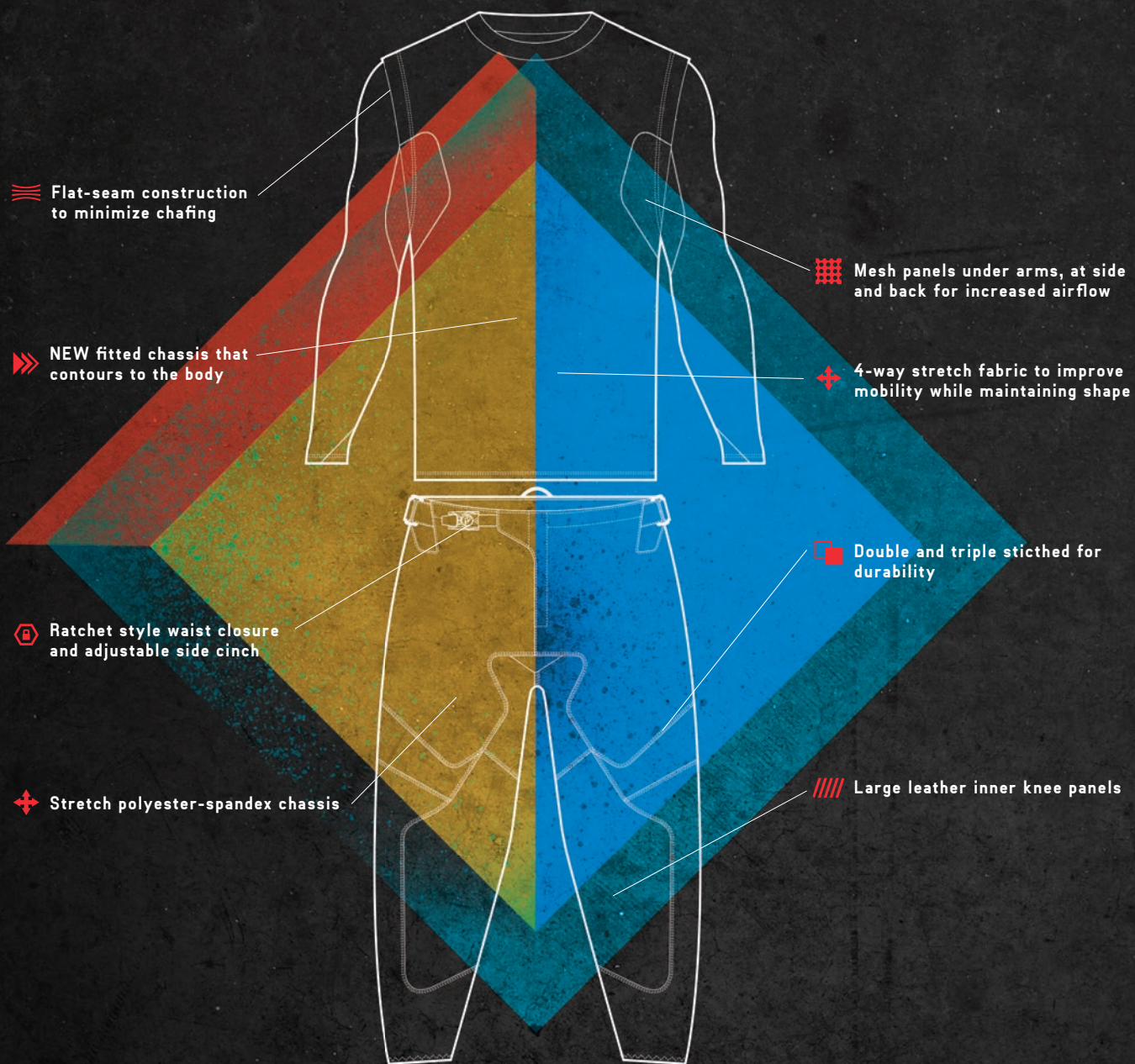
PANT

- Championship-Proven Core chassis with increased ventilation and airflow
- Fully perforated panels for improved airflow
- Full grain leather inner knee panels
- Aramid stitching around leather knee panels
- Model specific vented TPR inlets
- Ratchet style waist closure and adjustable side cinch
- Perforated inner liner with 4-way spandex panel at waist
- Hidden inner hip pocket
- Removable hip pads included



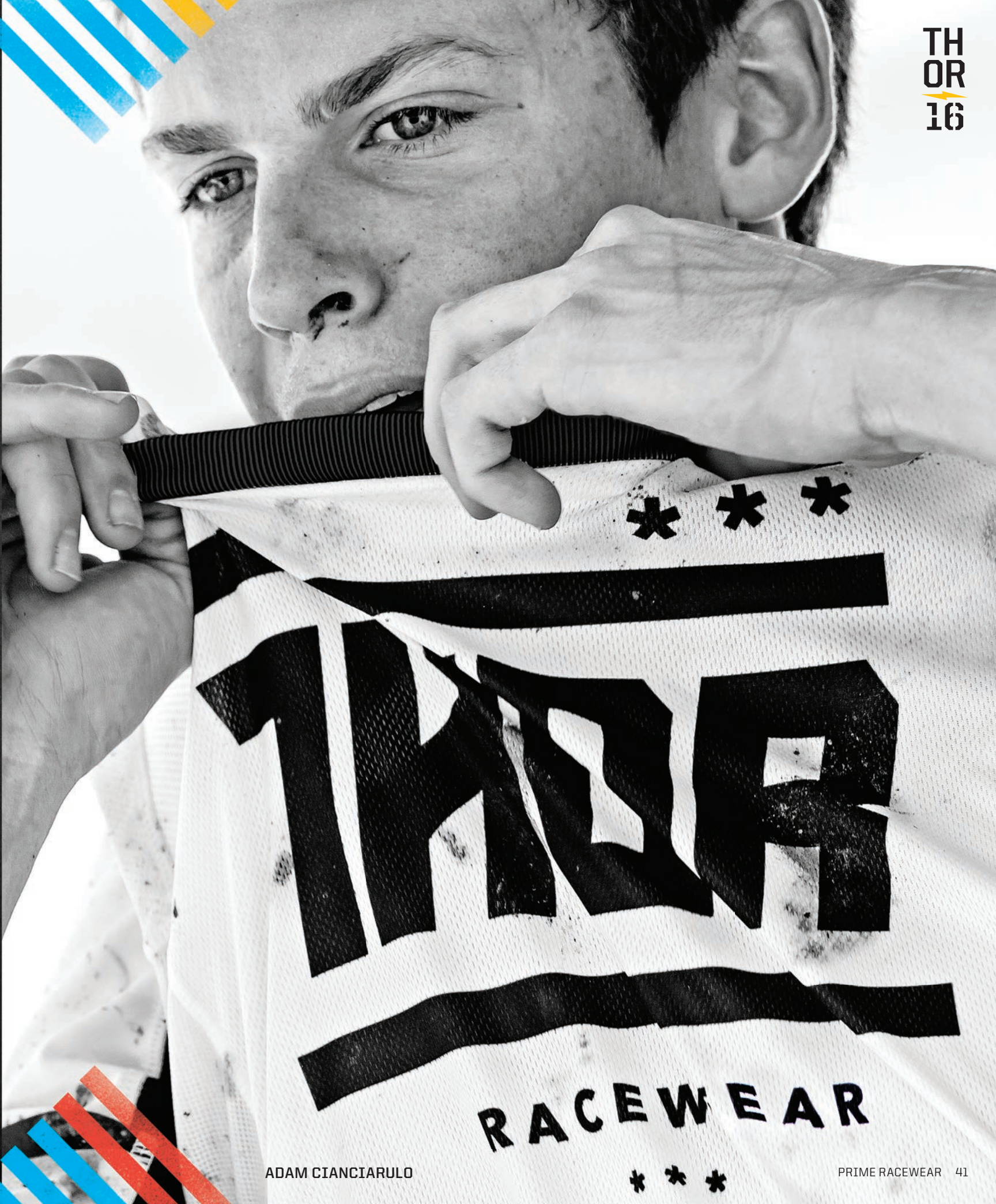
JASON ANDERSON

PRIME RACEWEAR



[PRIME FIT SQUAD P.42]

With the evolution of riding reaching new heights, we needed a gear kit that met the demands of today's new riders. Prime gear is an evolving concept that is built around a very lightweight, breathable chassis to allow complete freedom of motion on the bike. The pant is extremely light and flexible compared with traditional pants and is intended as a "race day" or track pant. That doesn't mean it's not durable, it just means it's not the best choice for a ride through the pucker brush and tight woods. Up top, our new Prime Fit jersey takes things to another level with its form-fitted sleeves and tailored torso construction resulting in reduced wind flap and interference. Utilizing a unique layered look we've combined the benefits of compression technology while allowing great air circulation around the torso and excellent moisture wicking for those long hot motos.



MEN'S RACEWEAR PRIME FIT SQUAD

JERSEY \$59.95 PANT \$119.95



RED / WHITE

JERSEY	S	M	L	XL	2XL	
2910 -	3780	3781	3782	3783	3784	
PANT	28	30	32	34	36	38
2901 -	5668	5669	5670	5671	5672	5673

WHITE / BLACK

JERSEY	S	M	L	XL	2XL	
2910 -	3785	3786	3787	3788	3789	
PANT	28	30	32	34	36	38
2901 -	5674	5675	5676	5677	5678	5679

BLUE / YELLOW

JERSEY	S	M	L	XL	2XL	
2910 -	3775	3776	3777	3778	3779	
PANT	28	30	32	34	36	38
2901 -	5662	5663	5664	5665	5666	5667



MAX NAGL

MEN'S RACEWEAR
PRIME TACH

JERSEY \$32.95 PANT \$119.95



NAVY / FLO ORANGE

JERSEY	S	M	L	XL	2XL	
2910-	3795	3796	3797	3798	3799	
PANT	28	30	32	34	36	38
2901-	5656	5657	5658	5659	5660	5661

BLACK / FLO GREEN

JERSEY	S	M	L	XL	2XL	
2910-	3790	3791	3792	3793	3794	
PANT	28	30	32	34	36	38
2901-	5650	5651	5652	5653	5654	5655



JERSEY

- Refined chassis for increased comfort and performance
- 4-way stretch moisture wicking fabric
- Raglan style sleeves
- Stretch knit cuffs and collar
- No-fade sublimated graphics

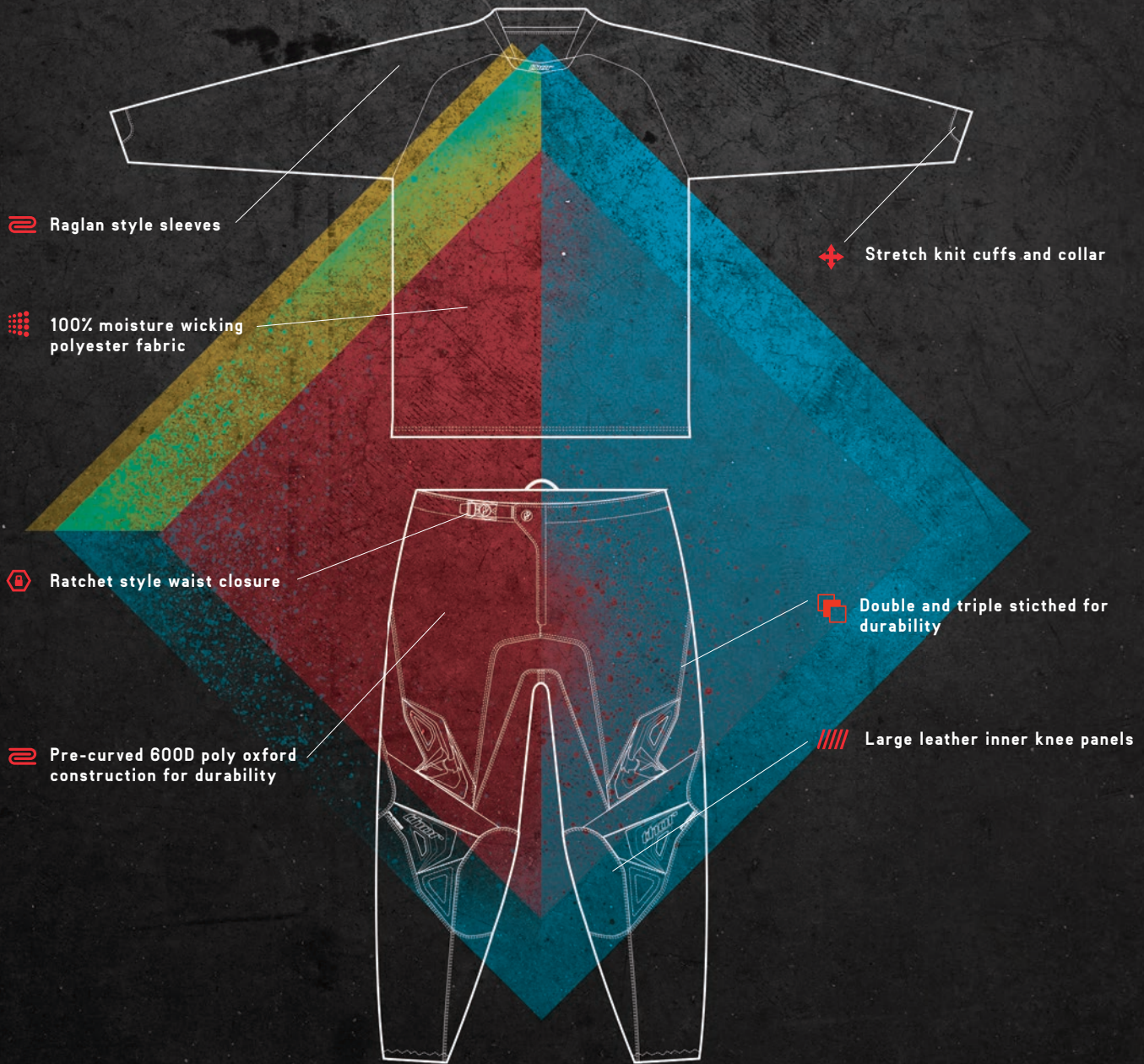
PANT

- Refined chassis for increased comfort and performance
- Stretch polyester-spandex chassis
- Large leather inner knee panels
- Double and triple stitched for durability
- Ratchet style waist closure and adjustable side cinch
- Sewn in liner



NICK GAINES

PHASE RACEWEAR



[PHASE P.48]

The best value in motocross. Phase gear is rugged, durable, and the ideal all-around kit for riders and racers. With an improved fit and chassis refinements the Phase kit takes class-leading performance to a new level. Combine this with our perfectly patterned micro-mesh jersey and you've got a kit that's perfect for track and trail.



BROC TICKLE

MEN'S RACEWEAR

PHASE STRANDS

JERSEY \$32.95 PANT \$99.95



BLACK / YELLOW

JERSEY	S	M	L	XL	2XL	3XL			
2910 -	3533	3534	3535	3536	3537	3538			
PANT	28	30	32	34	36	38	40	42	44
2901 -	5281	5282	5283	5284	5285	5286	5287	5288	5289

CEMENT / NAVY

JERSEY	S	M	L	XL	2XL	3XL			
2910 -	3539	3540	3541	3542	3543	3544			
PANT	28	30	32	34	36	38	40	42	44
2901 -	5290	5291	5292	5293	5294	5295	5296	5297	5298

WHITE / RED

JERSEY	S	M	L	XL	2XL	3XL			
2910 -	3545	3546	3547	3548	3549	3550			
PANT	28	30	32	34	36	38	40	42	44
2901 -	5299	5300	5301	5302	5303	5304	5305	5306	5307



BROC TICKLE

MEN'S RACEWEAR
PHASE HYPERION

JERSEY \$32.95 PANT \$99.95



BLACK / WHITE

JERSEY	S	M	L	XL	2XL	3XL			
2910 -	3491	3492	3493	3494	3495	3496			
PANT	28	30	32	34	36	38	40	42	44
2901 -	5218	5219	5220	5221	5222	5223	5224	5225	5226

BLACK / GREEN

JERSEY	S	M	L	XL	2XL	3XL			
2910 -	3763	3764	3765	3766	3767	3768			
PANT	28	30	32	34	36	38	40	42	44
2901 -	5585	5586	5587	5588	5589	5590	5591	5592	5593

BLACK / GOLDEN YELLOW

JERSEY	S	M	L	XL	2XL	3XL			
2910 -	3769	3770	3771	3772	3773	3774			
PANT	28	30	32	34	36	38	40	42	44
2901 -	5594	5595	5596	5597	5598	5599	5600	5601	5602



RED / WHITE

JERSEY	S	M	L	XL	2XL	3XL				
2910 -	3509	3510	3511	3512	3513	3514				
PANT	28	30	32	34	36	38	40	42	44	
2901 -	5245	5246	5247	5248	5249	5250	5251	5252	5253	

BLUE / WHITE

JERSEY	S	M	L	XL	2XL	3XL				
2910 -	3497	3498	3499	3500	3501	3502				
PANT	28	30	32	34	36	38	40	42	44	
2901 -	5227	5228	5229	5230	5231	5232	5233	5234	5235	

NAVY / ORANGE

JERSEY	S	M	L	XL	2XL	3XL				
2910 -	3503	3504	3505	3506	3507	3508				
PANT	28	30	32	34	36	38	40	42	44	
2901 -	5236	5237	5238	5339	5340	5341	5342	5343	5344	

MEN'S RACEWEAR
PHASE RAMBLE

JERSEY \$32.95 PANT \$99.95



BLUE / GREEN

JERSEY	S	M	L	XL	2XL	3XL				
2910 -	3551	3552	3553	3554	3555	3556				
PANT	28	30	32	34	36	38	40	42	44	
2901 -	5308	5309	5310	5311	5312	5313	5314	5315	5316	

CHARCOAL / WHITE

JERSEY	S	M	L	XL	2XL	3XL				
2910 -	3557	3558	3559	3560	3561	3562				
PANT	28	30	32	34	36	38	40	42	44	
2901 -	5317	5318	5319	5320	5321	5322	5323	5324	5325	

NAVY / RED

JERSEY	S	M	L	XL	2XL	3XL				
2910 -	3563	3564	3565	3566	3567	3568				
PANT	28	30	32	34	36	38	40	42	44	
2901 -	5326	5327	5328	5329	5330	5331	5332	5333	5334	



BROC TICKLE





JORDI TIXIER

MEN'S RACEWEAR

PHASE GASKET

JERSEY \$32.95 PANT \$99.95



HEATHER / BLACK

JERSEY	S	M	L	XL	2XL	3XL			
2910 -	3515	3516	3517	3518	3519	3520			
PANT	28	30	32	34	36	38	40	42	44
2901 -	5254	5255	5256	5257	5258	5259	5260	5261	5262

NAVY / LIME

JERSEY	S	M	L	XL	2XL	3XL			
2910 -	3521	3522	3523	3524	3525	3526			
PANT	28	30	32	34	36	38	40	42	44
2901 -	5263	5264	5265	5266	5267	5268	5269	5270	5271

FLO ORANGE / BLACK

JERSEY	S	M	L	XL	2XL	3XL			
2910 -	3527	3528	3529	3530	3531	3532			
PANT	28	30	32	34	36	38	40	42	44
2901 -	5272	5273	5274	5275	5276	5277	5278	5279	5280

MEN'S RACEWEAR
PHASE BLACKOUT

JERSEY \$32.95 PANT \$99.95

THOR
OR
16



- LINED WITH BRUSHED FLEECE FABRIC

BLACKOUT - COLD WEATHER \$39.95

JERSEY	S	M	L	XL	2XL	3XL	4XL
2910 -	3174	3175	3176	3177	3178	3179	3180

BLACKOUT

JERSEY	S	M	L	XL	2XL	3XL	4XL				
2910 -	3167	3168	3169	3170	3171	3172	3173				
PANT	28	30	32	34	36	38	40	42	44	46	48
2901 -	4765	4766	4767	4768	4769	4770	4771	4772	4773	4774	4775

MEN'S RACEWEAR
PHASE VENTED DOPPLER

JERSEY \$32.95 PANT \$99.95



WHITE / BLACK

JERSEY	S	M	L	XL	2XL	3XL			
2910 -	3593	3594	3595	3596	3597	3598			
PANT	28	30	32	34	36	38	40	42	44
2901 -	5371	5372	5373	5374	5375	5376	5377	5378	5379

GRAY / ORANGE

JERSEY	S	M	L	XL	2XL	3XL			
2910 -	3587	3588	3589	3590	3591	3592			
PANT	28	30	32	34	36	38	40	42	44
2901 -	5362	5363	5364	5365	5366	5367	5368	5369	5370

BLACK / FLUORESCENT

JERSEY	S	M	L	XL	2XL	3XL			
2910 -	3581	3582	3583	3584	3585	3586			
PANT	28	30	32	34	36	38	40	42	44
2901 -	5353	5354	5355	5356	5357	5358	5359	5360	5361

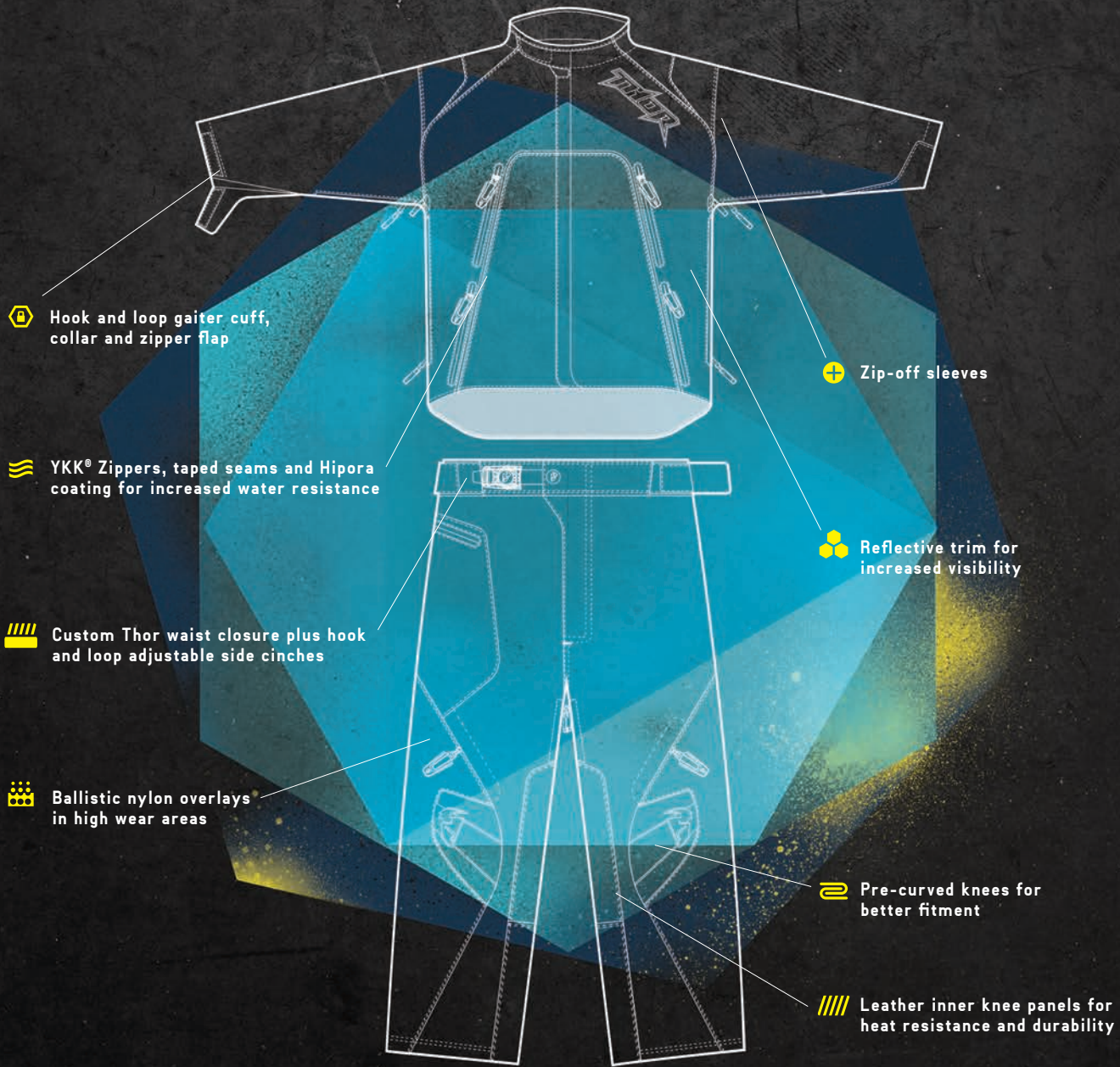
JERSEY

- Athletic mesh construction for maximum ventilation
- Raglan style sleeves
- Stretch knit cuffs and collar
- 100% moisture wicking polyester fabric
- No-fade sublimated graphics

PANT

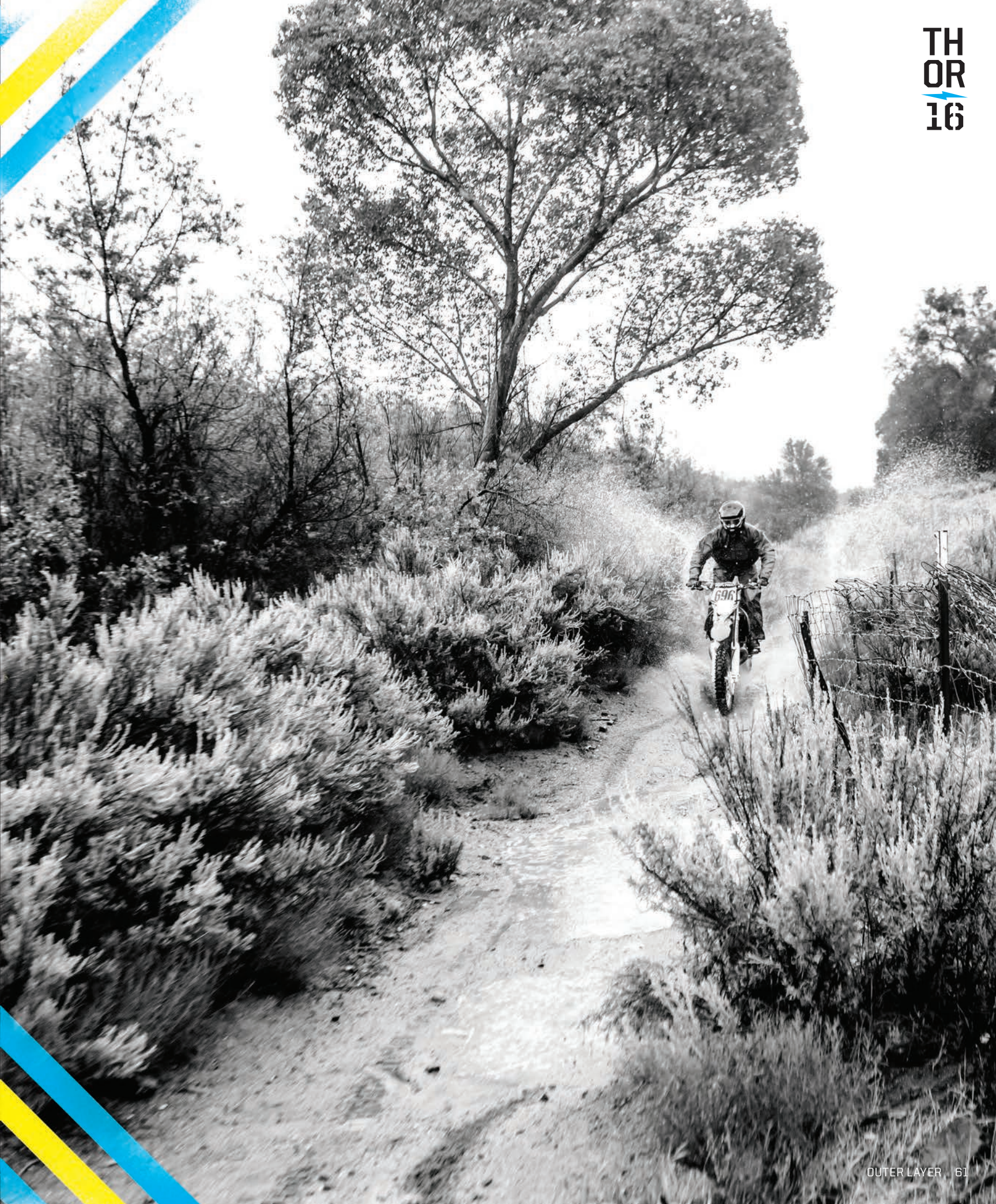
- Vented fabric construction for maximum airflow
- Leather inner knee panels
- Stretch panels for flexibility
- Double and triple stitched for durability
- Ratchet style waist closure
- Sewn in liner with hidden inner hip pocket
- Removable hip pads included

OUTER LAYER



[RANGE P.62]

Take control of the terrain and the elements with outerwear that's built to handle the extreme conditions mother nature can throw your way. With innovative features and technical materials and construction, Thor outerwear is built to keep you riding when the others pack up and head for cover.



OUTER LAYER RANGE

JACKET \$179.95 PANT \$139.95



BLACK / CHARCOAL

JACKET	M	L	XL	2XL	3XL					
2920 -	0403	0404	0405	0406	0407					
PANT	28	30	32	34	36	38	40	42	44	
2901 -	5603	5604	5605	5606	5607	5608	5609	5610	5611	

CHARCOAL / ORANGE

JACKET	M	L	XL	2XL	3XL					
2920 -	0413	0414	0415	0416	0417					
PANT	28	30	32	34	36	38	40	42	44	
2901 -	5621	5622	5623	5624	5625	5626	5627	5628	5629	



JACKET

- YKK® Zippers, taped seams and Hipora coating for increased water resistance
- Lite-prene lined collar for comfort
- 2-way front zipper adapts to riding position
- Full mesh liner for breathability
- Oversized pit zip vents in addition to front intake vents
- 3-fold accordion elbows for flexibility
- Hook and loop gaiter cuff, collar and zipper flap
- Rear storage pocket
- Zip-off sleeves
- Reflective trim for increased visibility

PANT

- Pre-curved knees for better fitment
- Water resistant yet breathable construction
- Large cargo pocket for storage
- Ballistic nylon overlays in high wear areas
- Custom Thor waist closure plus hook and loop adjustable side cinches
- 3-fold accordion elbows for flexibility
- Leather inner knee panels for heat resistance and durability



OUTER LAYER PHASE JACKET

\$129.95

- YKK® Zippers, taped seams and Hipora coating for increased water resistance
- Lite-prene lined collar for comfort
- 2-way front zipper adapts to riding position
- Full mesh liner for breathability
- Oversized pit zip vents in addition to front intake vents
- 3-fold accordion elbows for flexibility
- Hook and loop gaiter cuff, collar and zipper flap
- Rear storage pocket
- Zip-off sleeves
- Reflective trim for increased visibility

BLACK/CHARCOAL	MD	LG	XL	2XL	3XL
2920 -	0418	0419	0420	0421	0422
CEMENT/NAVY	MD	LG	XL	2XL	3XL
2920 -	0423	0424	0425	0426	0427
CHARCOAL/ORANGE	MD	LG	XL	2XL	3XL
2920 -	0428	0429	0430	0431	0432



BACK VIEW



BLACK/CHARCOAL



CEMENT/NAVY



CHARCOAL/ORANGE

PACK JACKET

\$54.95

- Jacket packs easily into pouch with belt for storage while riding
- Rear exhaust vents allow hot air to escape
- Soft dimple mesh lined collar for comfort
- Front and rear storage pockets
- Waterproof membrane shell with taped seams and water resistant zippers
- Adjustable drawstring waist closure
- Elastic cuffs



BACK VIEW



BLACK/CHARCOAL

BLACK/CHARCOAL	MD	L6	XL	2XL	3XL
2920 -	0433	0434	0435	0436	0437
CEMENT/NAVY	MD	L6	XL	2XL	3XL
2920 -	0438	0439	0440	0441	0442
CHARCOAL/ORANGE	MD	L6	XL	2XL	3XL
2920 -	0443	0444	0445	0446	0447



CEMENT/NAVY



CHARCOAL/ORANGE

OUTER LAYER PHASE OFF ROAD

JERSEY \$32.95 PANT \$109.95

JERSEY

- Championship-Proven chassis with increased comfort and performance
- Raglan style sleeves
- Stretch knit cuffs and collar
- Model specific patch embellishments
- 100% moisture wicking polyester fabric
- No-fade sublimated graphics

PANT

- Refined chassis for increased comfort and performance
- Ratchet style waist closure
- Double and triple stitching
- Two zippered pockets for storage
- Leather inner knee panels for heat resistance and durability
- Sewn in liner with hidden inner hip pocket
- Adjustable snap button and elastic cord ankle closure
- Removable hip pads included



BLACK

PANT	28	30	32	34	36	38
2901-	4881	4882	4883	4884	4885	4886
	40	42	44	46	48	
2901-	4887	4888	4889	4890	4891	

GREY OUT - CHARCOAL / ORANGE

JERSEY	S	M	L	XL	2XL	3XL			
2910-	3569	3570	3571	3572	3573	3574			
PANT	28	30	32	34	36	38	40	42	44
2901-	5335	5336	5337	5338	5339	5340	5341	5342	5343

CLOAK - GREEN / FOREST

JERSEY	S	M	L	XL	2XL	3XL			
2910-	3575	3576	3577	3578	3579	3580			
PANT	28	30	32	34	36	38	40	42	44
2901-	5344	5345	5346	5347	5348	5349	5350	5351	5352

\$19.95

RAIN SUIT

- Zipper closure with storm flap
- Vented cape back
- Draw cord hood with visor
- Two front cargo pockets
- Adjustable wrist cuffs
- Snap pant cuffs
- Elastic waist



RAIN JACKET

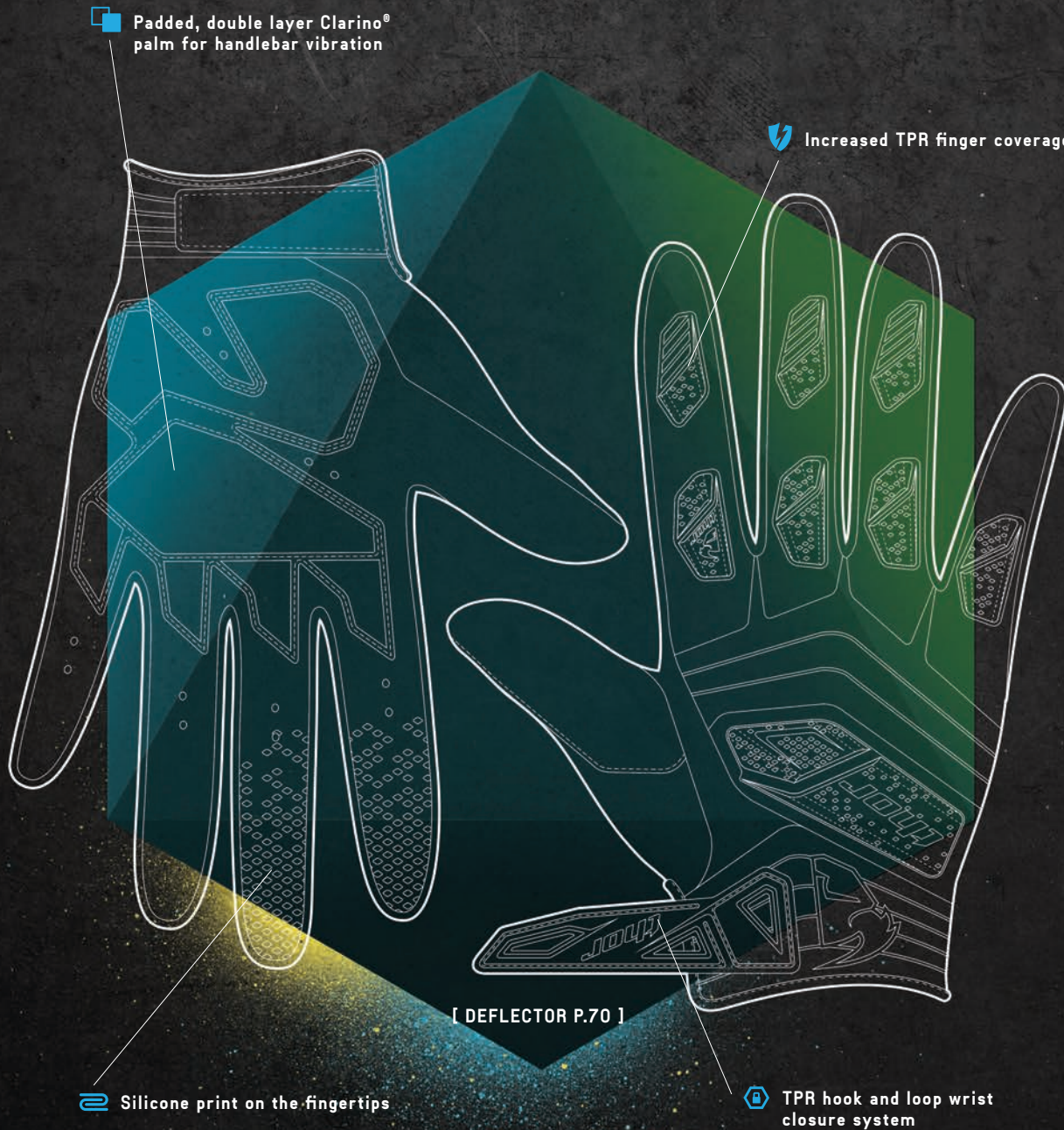
\$ 24.95

- 100% PVC construction
- Raglan sleeves with underarm mesh panels for ventilation
- Rear exhaust vents allow hot air to escape
- Waterproof zipper
- Elastic binding at collar, cuffs and waist
- Translucent color allows jersey to be seen under the jacket

BLACK	M	L	XL	2XL	3XL
2851 -	0318	0319	0320	0321	0322

CLEAR	MD	LG	XL	2XL	3XL
2854 -	0140	0141	0142	0143	0144

GLOVES



The essential link between rider and bike, gloves are the crucial connection between control and chaos. Every rider has a personal preference, padded palms, no pads, wrist closure, no closure, lots of backhand coverage, minimalist, and we've got you covered in every aspect. With seven different styles and a complete range of performance options, you'll find the glove that'll keep you in control.



JORDI TIXIER

GLOVES DEFLECTOR

€ 32.95

- Molded Neoprene flex panel and wrist for increased flexibility
- 4-way stretch finger gusset
- Padded, double layer Clarino® palm for handlebar vibration
- Silicone print on the fingertips
- Improved ventilation promotes airflow
- TPR hook and loop wrist closure system
- Increased TPR finger coverage



PALM VIEW

RED



BLUE



BLACK



ORANGE



WHITE

RED	XS	S	M	L	XL	2XL
3330 -	2815	2816	2817	2818	2819	2820

BLUE	XS	S	M	L	XL	2XL
3330 -	2803	2804	2805	2806	2807	2808

BLACK	XS	S	M	L	XL	2XL
3330 -	2797	2798	2799	2800	2801	2802

ORANGE	XS	S	M	L	XL	2XL
3330 -	2809	2810	2811	2812	2813	2814

WHITE	XS	S	M	L	XL	2XL
3330 -	2821	2822	2823	2824	2825	2826

GLOVES FLOW

\$ 27.95

- Refined chassis for increased comfort and performance
- Single layer, fully perforated palm
- Diamond mesh Q-span construction for improved airflow
- Silicone print on the fingertips
- Minimal integrated TPRs provide coverage
- Lite-prene 4-way stretch wrist construction
- 4-way elasthane knuckle for flexibility



PALM VIEW



RED



BLACK



NAVY/ORANGE



BLUE

BLUE	XS	S	M	L	XL	2XL
3330 -	3067	3068	3069	3070	3071	3072
RED	XS	S	M	L	XL	2XL
3330 -	3079	3080	3081	3082	3083	3084

BLACK	XS	S	M	L	XL	2XL
3330 -	3061	3062	3063	3064	3065	3066
NAVY/ORANGE	XS	S	M	L	XL	2XL
3330 -	3073	3074	3075	3076	3077	3078

IMPACT

\$42.95

- Encompassing knuckle and TPRs for maximum coverage
- Padded, double layer Clarino® palm for handlebar vibration
- TPR hook and loop closure system
- Mesh and Airprene construction
- Silicone print on the fingertips
- Pre-curved design for an improved fit

BLACK S M L XL 2XL
3330 - 2827 2828 2829 2830 2831

RED S M L XL 2XL
3330 - 2832 2833 2834 2835 2836



PALM VIEW



RED



BLACK

INSULATOR

\$39.95

- Interior membrane to combat extreme weather conditions
- Single layer Clarino® palm keeps the gloves light without sacrificing feel or losing finger dexterity
- Hand, finger and knuckle TPRs for maximum coverage
- Rubber thumb overlay
- Full palm and fingertip silicone pattern

BLACK S M L XL 2XL
3330 - 2304 2305 2306 2307 2308



PALM VIEW



BLACK

GLOVES SPECTRUM

\$21.95

- Mesh and Airprene construction for increased comfort and performance
- TPR hook and loop closure system
- Finger and hand TPRs for coverage
- Lightweight palm padding for comfort



PALM VIEW

RED



BLUE



BLACK



YELLOW



GREEN



ORANGE



WHITE



NAVY/ORANGE

RED	XS	S	M	L	XL	2XL
3330 -	3109	3110	3111	3112	3113	3114
BLUE	XS	S	M	L	XL	2XL
3330 -	3091	3092	3093	3094	3095	3096
BLACK	XS	S	M	L	XL	2XL
3330 -	3085	3086	3087	3088	3089	3090

ORANGE	XS	S	M	L	XL	2XL
3330 -	3103	3104	3105	3106	3107	3108
GREEN	XS	S	M	L	XL	2XL
3330 -	3097	3098	3099	3100	3101	3102
WHITE	XS	S	M	L	XL	2XL
3330 -	3115	3116	3117	3118	3119	3120

NAVY/ORANGE	XS	S	M	L	XL	2XL
3330 -	3402	3403	3404	3405	3406	3407
YELLOW	XS	S	M	L	XL	2XL
3330 -	3121	3122	3123	3124	3125	3126

GLOVES VOID PLUS

\$21.95

- Multi-panel chassis construction offers increased mobility
- Seamless reinforced thumb overlay for increased coverage
- Hook and loop closure system
- Lightweight minimalistic design
- No-fade sublimated graphics
- Single layer, fully perforated palm
- Silicone print on fingertips
- 4-way stretch finger and wrist panels



PALM VIEW

GASKET HEATHER



CHEX RED



CHEX BLACK



CIRCULUS FLO GREEN



CIRCULUS CYAN



CIRCULUS ORANGE



GASKET NAVY/GREEN



GASKET ORANGE/BLACK

CIRCULUS ORANGE	XS	S	M	L	XL	2XL
3330 -	3456	3457	3458	3459	3460	3461
CIRCULUS CYAN	XS	S	M	L	XL	2XL
3330 -	3444	3445	3446	3447	3448	3449
CIRCULUS FLO GREEN	XS	S	M	L	XL	2XL
3330 -	3450	3451	3452	3453	3454	3455

GASKET ORANGE/BLACK	XS	S	M	L	XL	2XL
3330 -	3486	3487	3488	3489	3490	3491
GASKET NAVY/GREEN	XS	S	M	L	XL	2XL
3330 -	3480	3481	3482	3483	3484	3485
GASKET HEATHER	XS	S	M	L	XL	2XL
3330 -	3474	3475	3476	3477	3478	3479

CHEX BLACK	XS	S	M	L	XL	2XL
3330 -	3462	3463	3464	3465	3466	3467
CHEX RED	XS	S	M	L	XL	2XL
3330 -	3468	3469	3470	3471	3472	3473

GLOVES VOID

\$ 19.95

- Lightweight minimalistic design
- No-fade sublimated graphics
- Single layer, fully perforated palm
- Screen printed palm graphics
- 4-way stretch finger and wrist panels



PALM VIEW

BLEND BLUE



BLEND BLACK



PIXEL GREEN



COURSE BLUE



COURSE CHARCOAL



COURSE RED



BEND BLACK



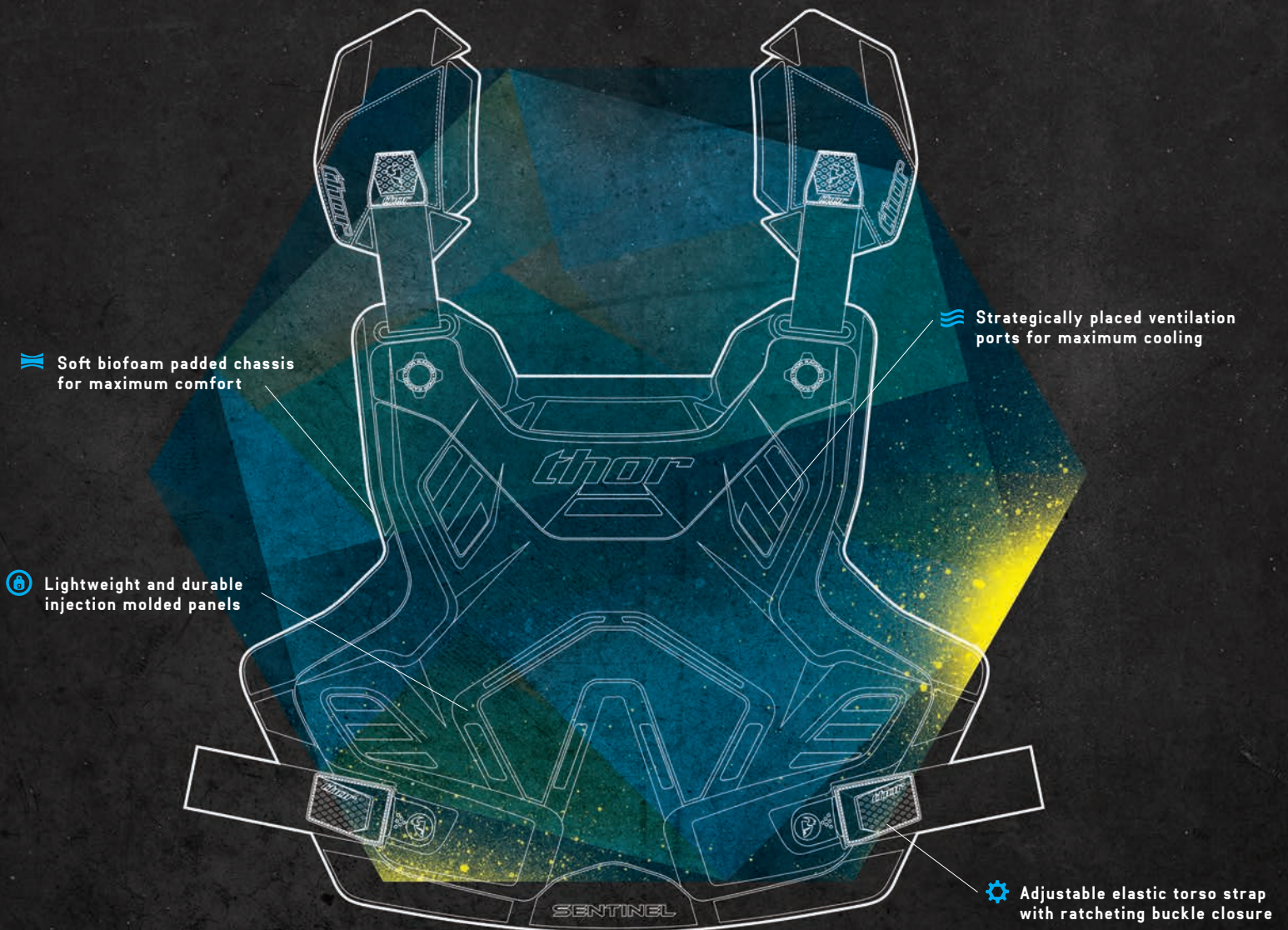
BEND NAVY

COURSE RED	XS	S	M	L	XL	2XL
3330 -	3432	3433	3434	3435	3436	3437
COURSE CHARCOAL	XS	S	M	L	XL	2XL
3330 -	3426	3427	3428	3429	3430	3431
COURSE BLUE	XS	S	M	L	XL	2XL
3330 -	3420	3421	3422	3423	3424	3425

BLEND BLUE	XS	S	M	L	XL	2XL
3330 -	3414	3415	3416	3417	3418	3419
BLEND BLACK	XS	S	M	L	XL	2XL
3330 -	3408	3409	3410	3411	3412	3413
PIXEL GREEN	XS	S	M	L	XL	2XL
3330 -	3438	3439	3440	3441	3442	3443

BEND NAVY	XS	S	M	L	XL	2XL
3330 -	3133	3134	3135	3136	3137	3138
BEND BLACK	XS	S	M	L	XL	2XL
3330 -	3127	3128	3129	3130	3131	3132

COVERAGE



[SENTINEL XP P.84]

Whether you're looking for lightweight roost deflection or complete coverage and support, we have the product to do the job. Designed to allow maximum mobility while providing optimum coverage, each piece is purpose built to work with your body in the riding position and ensure a proper fit and long lasting durability.

SAFETY WARNING: riding a motorcycle is a dangerous activity. When riding, always wear a helmet, eye protection and protective clothing. There is no assurance that serious injury or death can be avoided even if you wear the product shown in this catalog and take all the precautions to avoid every risk. Please ensure that your THOR products fit properly. Improperly fitting products can impair your ability to control your motorcycle.



ADAM CIANCIARULO





ADAM CIANCIARULO

COVERAGE SENTINEL XP

\$99.95

- Adjustable elastic torso strap with ratcheting buckle closure
- Lightweight and durable injection molded panels
- Strategically placed ventilation ports for maximum cooling
- Soft biofoam padded chassis for maximum comfort
- Fits most riders 120-200 LBS (54-85 KG)
- Supports ID Panel. Sold separately
- Supports Back Strap Kit. Sold separately



BACK VIEW



BACK STRAP KIT - BLACK/CLEAR
2701-0679

\$19.95



ID PANEL - CLEAR
2701-0680

\$12.95



WHITE/BLACK
2701-0666



BLACK / WHITE
2701-0661



BLACK / RED
2701-0660



BLACK / BLUE
2701-0662



CHRIS ALLDREDGE

COVERAGE SENTINEL

\$ 79.95

- Adjustable elastic torso strap with ratcheting buckle closure
- Lightweight and durable injection molded panels
- Strategically placed ventilation ports for maximum cooling
- Soft biofoam padded chassis for maximum comfort
- Supports ID Panel. Sold separately



ID PANEL - CLEAR
2701-0415

\$ 11.95



WHITE
2701-0641



BLACK
2701-0640

QUADRANT

\$ 69.95

- Energy absorbing, high density foam padding
- Adjustable side buckle closure system
- Free-floating shoulder system
- Removable arm guards
- Fully padded neck roll for comfort
- Optimum airflow passages
- Refined chest and back contours for a perfect fit
- Fits most riders 100-200 LBS (45-90 KG)
- Tested and certified according to European Standard EN 14021:2003



BLACK/WHITE
2701-0645



BLACK/CLEAR
2701-0644

\$149.95

IMPACT RIG

- Micro-mesh chassis with external seams for comfort
- Side mounted YKK® chest zipper averts chest plate
- Removable articulated back panel
- Poly-urethane shoulder caps with Ram-air venting
- Multiple tension straps for a secure fit
- Molded bio-foam panels with extensive venting
- Removable kidney belt
- Molded elbow and forearm guards
- Lightly padded collar for comfort
- S/M Fits most riders up to 160 LBS (72 KG)
- L/XL Fits most riders 160-180 LBS (72-81 KG)
- 2XL/3XL Fits most riders 180-250 LBS (81-113 KG)



BACK VIEW

BLACK	S/M	L/XL	2XL/3XL
2701-	0527	0528	0529



BLACK/RED
2701-0646



FLO GREEN/CLEAR
2701-0648



FLO ORANGE/CLEAR
2701-0647
SHOWN WITH ARM GUARDS REMOVED

COVERAGE FORCE XP KNEE GUARD

\$99.95

TESTED & CERTIFIED 

- Perforated airprene chassis for support and secure fit
- Impact resistant, polyethylene kneecap
- Dual pivot system mimics anatomical action of the knee
- Inverted post latching system
- Adjustable hook and loop closure strap
- Asymmetrical design for comfort and fit
- S/M fits most riders up to 5.7 ft (170 cm) tall
- L/XL fits most riders taller than 5.7 ft (170 cm)
- 2XL/3XL fits most riders taller than 5.7 ft (170 cm) with larger than average legs
- Tested and certified according to European Standard EN 1621-1:2012

BLACK	S/M	L/XL	2XL/3XL
2704 -	0359	0360	0361
RED	S/M	L/XL	2XL/3XL
2704 -	0362	0363	0364



BLACK

RED

FORCE

THOR



COVERAGE STATIC KNEE

\$49.95

- Comfortably fits under riding gear
- Secure and adjustable hook and loop closure
- Airprene material promotes airflow
- Injection molded knee and shin coverage

BLACK
2704-0129



STATIC ELBOW

\$26.95

- Stitched-in foam elbow donut for comfort
- Lightweight and flexible
- Fits comfortably under riding gear
- Perforated Airprene material promotes airflow

BLACK S/M L/XL
2706 0079 0080



QUADRANT KNEE

\$29.95

- 2-piece molded knee/shin armor
- Stitched-in foam patella donut for comfort
- Asymmetrical design for a specific fit
- 2 integrated elastic straps for a secure fit

BLACK
2704-0240



QUADRANT ELBOW

\$24.95

- Adjustable closure system
- Moisture wicking interior panel reduces chafing
- Stitched-in foam elbow donut for comfort
- Extensive vent channels for airflow

BLACK
2706-0137



SECTOR KNEE

\$13.95

- Durable polypropylene molded knee and shin panels
- Two adjustable retention straps for secure fit
- Slim, compact design increases comfort while keeping the weight to a minimum

BLACK
2704-0082



FORCE BELT

\$39.95

- Low profile perforated TPR hook and loop closure tabs
- Four center-pull elastic support straps
- Exhaust ports allow heat to escape
- Anatomically derived molded bio-foam panels
- High density molded TPR mainstay for support
- Moisture-wicking interior with extensive padding
- Fits waist sizes S/M 28"-36" and L/XL 36"-44"

BLACK S/M L/XL
2703-0067 0068

WHITE S/M L/XL
2703-0125 0126



BLACK



WHITE

SECTOR BELT

\$34.95

- Perforated biofoam chassis promotes airflow
- Center pull elastic straps for even support
- Articulated TPR back panels for ergonomic support
- TPR hook & loop closure tabs with integrated thumb stops
- Low profile design improves overall fitment
- Fits waist sizes 28"-38"

BLACK
2703-0121

WHITE
2703-0122



BLACK



WHITE

BASE LAYER

Mesh construction for ventilation



[COMP FLEX DEFLECTOR P.95]

Form fitting for a no-bind fit

Moisture wicking chassis



[COMP SHORT SE P.94]

Flat stitched to reduce irritation

Before you gear up in your favorite kit, don't forget your base layer for added performance and coverage. Form-fitting and compression garments wick moisture and reduce fatigue while providing support and benefitting rider endurance. With a wide range of options including products with added impact coverage, the base layer forms an essential part of your riding kit.



BROC TICKLE

BASE LAYER

COMP KNEE SLEEVE \$ 19.95

- Reduces abrasion associated with knee guards
- Moisture wicking chassis
- Anti-slip silicone backing under the top band
- Sold as a pair

BLACK	S/M	L/XL	2XL/3XL
2704 -	0340	0341	0342
NAVY/ORANGE	S/M	L/XL	2XL/3XL
2704 -	0401	0402	0403



BLACK



NAVY/ORANGE

COMP PANT \$ 54.95

- Full length compression pant
- Moisture wicking chassis
- Flat stitched to reduce irritation

BLACK	S	M	L	XL	2XL
2940 -	0246	0247	0248	0249	0250
NAVY/ORANGE	S	M	L	XL	2XL
2940 -	0282	0283	0284	0285	0286



BLACK



NAVY/ORANGE

COMP SHORT SE \$ 54.95

- Molded EVA hip padding
- Tricot wrapped foam crotch pad
- Form fitting for a no-bind fit
- Elastic waistband keeps roost and sand out
- Tested according to the basic requirements of Directive 89/686/EEC, Category I

TESTED & CERTIFIED

BLACK	S	M	L	XL	2XL
2940 -	0230	0231	0232	0233	0234



COMP SHORT \$ 34.95

- Elastic Waistband keeps roost and sand out
- Form Fitting for a no-bind fit
- Nylon/Spandex chassis construction

BLACK	S	M	L	XL	2XL
2940 -	0277	0278	0279	0280	0281



COMP FLEX DEFLECTOR

\$44.95

- Thin, molded biofoam chest panel to block roost
- Sleeveless construction
- Mesh construction for ventilation
- Tight fitting base layer
- Tested according to the basic requirements of Directive 89/686/EEC, Category I

TESTED & CERTIFIED CE



BACK VIEW

GRAY S/M L/XL
2701 - 0685 0686

COMP DEFLECTOR

\$44.95

- Molded biofoam chest panel to block roost
- Sleeveless construction
- Ride-lite moisture wicking chassis
- Mesh construction for ventilation
- Form fitting for a no-bind fit
- Tested according to the basic requirements of Directive 89/686/EEC, Category I

TESTED & CERTIFIED CE



BACK VIEW

BLACK S/M L/XL
2701 - 0634 0635

COMP SHIRT

\$36.95

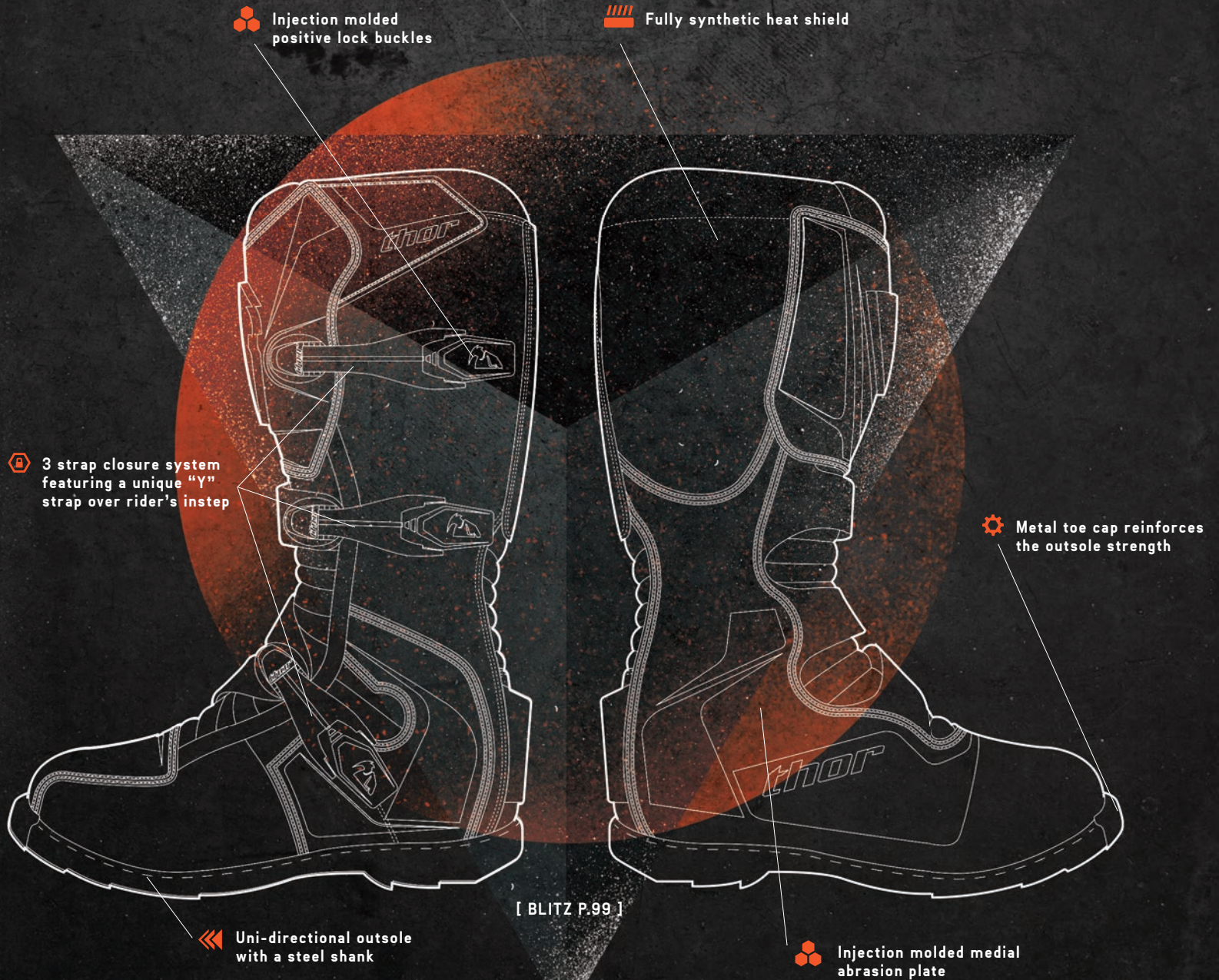
- Mesh construction for ventilation
- Form fitting for a no-bind fit
- Flat stitched to reduce irritation

BLACK S/M L/XL
2940 - 0240 0241



BACK VIEW

BOOTS



Proper footwear is essential for riding, and developing great boots starts from the inside. We start with a refined foot shape that's contoured to keep your foot in place while allowing proper feel for the brake and shifter. Then we work our way out to cover the essential functions like strong footbeds with internal steel shanks, molded shin panels, adjustable buckle systems, inner heat shields, and medial and lateral support and coverage. All this combines to create a boot that's ready for the track or the trail.



BOOTS

RATCHET BOOT

€189.95

- Ratchet closure buckle system for a secure, custom fit
- Synthetic leather chassis construction
- Split-grain leather heat shield
- Bio-foam lined interior and insole for comfort
- Welted rubber outsole with steel shank insert
- Tested and certified according to European Standard 13634:2010

TESTED & CERTIFIED 

BLACK	7	8	9	10	11	12	13	14	15
3410-	0737	0738	0739	0740	0741	0742	0743	0744	0745
WHITE	7	8	9	10	11	12	13	14	15
3410-	0746	0747	0748	0749	0750	0751	0752	0753	0754



WHITE



BLACK

\$129.95

BLITZ BOOT

TESTED & CERTIFIED CE

- Pre-curved injection molded shin plate
- 3 fully adjustable straps allow for a custom fit
- Fully synthetic heat shield
- Injection molded medial abrasion plate
- Mesh liner promotes airflow
- Metal toe cap reinforces the outsole strength
- Uni-directional outsole with a steel shank
- Injection molded positive lock buckles
- ATV outsole only offered in black
- Tested and certified according to European Standard EN 13634:2010



MX SOLE ATV SOLE

RED/BLUE	7	8	9	10	11	12	13	14	15
3410-	1385	1386	1387	1388	1389	1390	1391	1392	1393
BLK/RED	7	8	9	10	11	12	13	14	15
3410-	1376	1377	1378	1379	1380	1381	1382	1383	1384
BLK/GRN	7	8	9	10	11	12	13	14	15
3410-	1358	1359	1360	1361	1362	1363	1364	1365	1366
WHT/ORG	7	8	9	10	11	12	13	14	15
3410-	1367	1368	1369	1370	1371	1372	1373	1374	1375
WHITE	7	8	9	10	11	12	13	14	15
3410-	1057	1058	1059	1060	1061	1062	1063	1064	1065
BLACK	7	8	9	10	11	12	13	14	15
3410-	1048	1049	1050	1051	1052	1053	1054	1055	1056
BLK ATV	7	8	9	10	11	12	13	14	15
3410-	1066	1067	1068	1069	1070	1071	1072	1073	1074



BLACK/RED
\$139.95



BLACK ATV



BLACK/GREEN
\$139.95



WHITE



WHITE/ORANGE
\$139.95



BLACK



RED/BLUE
\$139.95

BOOTS

BLITZ LS BOOT

\$129.95

TESTED & CERTIFIED 

- Lightweight injection molded outsole
- Injection molded medial abrasion plate with integrated shift protection
- Contoured gaiter for increased mobility and comfort
- Adjustable positive-lock plastic buckles
- Integrated toe shift panel
- Steel shank insert for foot peg support
- Genuine split grain leather chassis construction
- Padded mesh interior promotes ventilation
- Tested according to the basic requirements of Directive 89/686/EEC

BLACK	7	8	9	10	11	12	13	14	15
3410-	1207	1208	1209	1210	1211	1212	1213	1214	1215
WHITE	7	8	9	10	11	12	13	14	15
3410-	1216	1217	1218	1219	1220	1221	1222	1223	1224



BLACK



WHITE

SOCKS

COMP SOCK

\$29.95

- Full-length knee brace sock
- Stretch mesh construction for a cool, comfortable fit
- No-fade sublimated graphics
- Sold in pairs

BLK/CHR S/M	L/XL
3431-	0259 0260
NAVY/ORG S/M	L/XL
3431-	0261 0262



NAVY/ORANGE



BLACK/CHARCOAL

DUAL SPORT COOL SOCK

\$14.95

- Moisture wicking Cool Max® construction
- Perfect height for use with Blitz LS Boot
- Lightweight yet durable material reduces bulk

CHR/RED 6/9 10/13
3431- 0285 0286

GRY/ORG 6/9 10/13
3431- 0283 0284

BLU/GRN 6/9 10/13
3431- 0279 0280

GRN/ORG 6/9 10/13
3431- 0281 0282



CHARCOAL/RED



GRAY/ORANGE



BLUE/GREEN



GREEN/ORANGE

MX COOL SOCK

\$19.95

- Moisture wicking Cool Max® construction
- Over-the-calf height
- Lightweight yet durable material reduces bulk

CHR/RED 6/9 10/13
3431- 0277 0278

GRY/ORG 6/9 10/13
3431- 0275 0276

BLU/GRN 6/9 10/13
3431- 0271 0272

GRN/ORG 6/9 10/13
3431- 0273 0274



CHARCOAL/RED



GRAY/ORANGE



BLUE/GREEN



GREEN/ORANGE

MX SOCK

\$14.95

- Traditional, thick moto sock construction for moisture control
- low-density panels in the ankle, shin and instep for comfort

BLK/RED 6/9 10/13
3431- 0265 0266

BLK/CYN 6/9 10/13
3431- 0263 0264

CHR/ORG 6/9 10/13
3431- 0267 0268

GRN/YLW 6/9 10/13
3431- 0269 0270



BLACK/RED



BLACK/CYAN

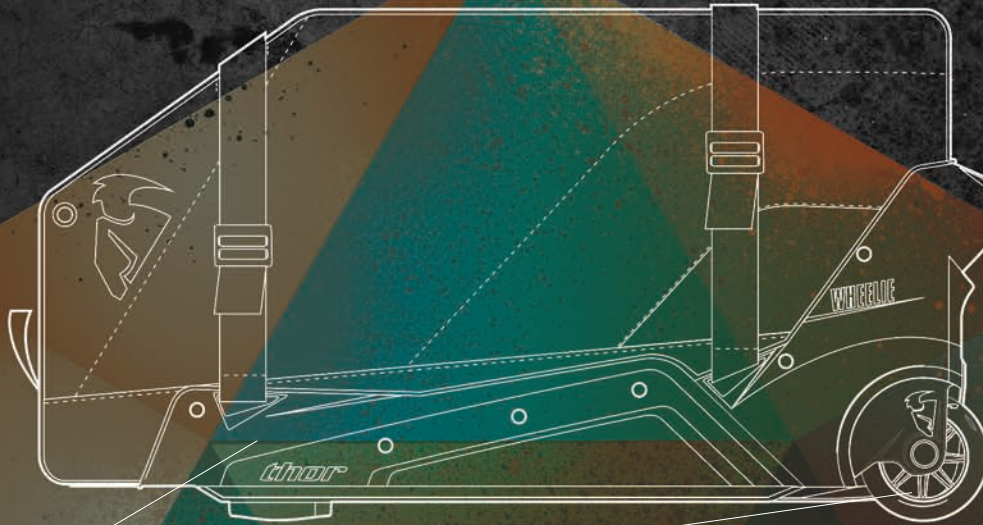



CHARCOAL/ORANGE




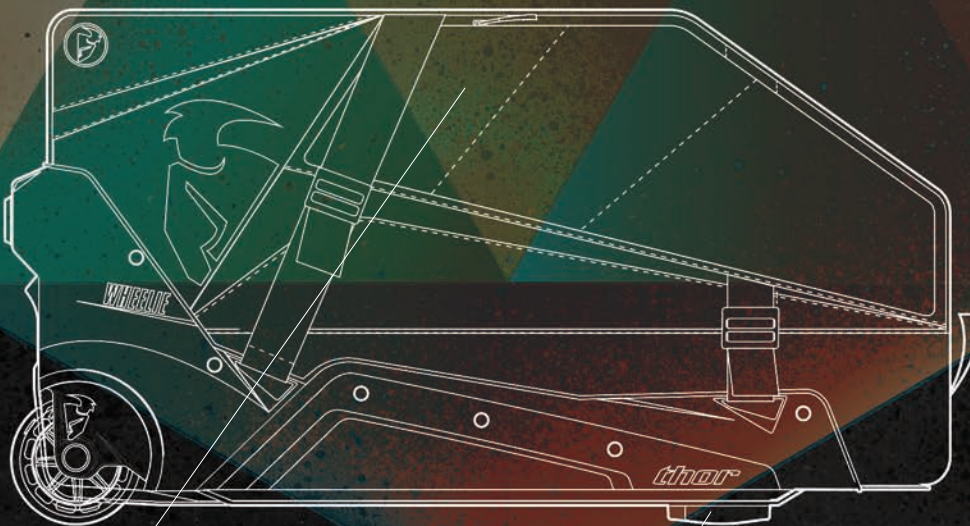
GREEN/YELLOW

BAG & PACKS





 Polypropylene molded base for remarkable strength and durability

 Oversized smooth rolling wheels coupled with increased ground clearance



[TRANSIT WHEELIE BAG P.104]

 Varying pocket sizes accommodate large and small items easily

 Retractable push button handle for ease of movement

Organize your gear and equipment with a bag that's purpose-built for moto. Whether it's a pack with integrated hydration, a heavy-duty gear bag that's big enough to carry all your essentials, or something to lug your laptop across campus, we've got a bag that fits your needs. Get to the track in style and keep your truck bed from looking like a yard sale.

BAGS AND PACKS

TRANSIT WHEELIE BAG

\$199.95

- Polypropylene molded base for remarkable strength and durability
- Retractable push button handle for ease of movement
- Oversized smooth rolling wheels coupled with increased ground clearance
- Varying pocket sizes accommodate large and small items easily
- Detachable main storage compartment divider permits large odd shaped items
- Designed to accommodate helmets, boots and protective gear
- Reinforced wheel housing
- 600D Polyester Shell, 210D Polyester Lining and PVC Base
- Dimensions: 30"L x 16"W x 16"H

BLACK/RED ORANGE
3512-0186



BLACK/RED ORANGE



EQUIP BAG

\$79.95

- Oversized main compartment with separate boot compartment
- Ventilation panel promotes airflow
- Small, zippered compartment helps keep accessory items separate and easy to find
- Heavy-duty shoulder strap
- 600D Polyester Shell, 210D Polyester Lining and PVC Base
- Dimensions: 25"L x 18"W x 18"H

BLACK/RED ORANGE
3512-0190



BLACK/RED ORANGE

CIRCUIT BAG

\$99.95

THOR
16

- 3 large main compartments can be combined to form 1 large compartment
- Large mesh ventilation promotes airflow and helps reduce odor
- Adjustable padded shoulder strap and comfortable side, front and rear handles
- 600D Polyester Shell, 210D Polyester Lining and PVC Base
- Dimensions: 27"L x 14"W x 16"H

BLACK/RED ORANGE

3512-0187

CEMENT/ORANGE

3512-0188

STEEL/FLO GREEN

3512-0189



CEMENT/RED ORANGE



BLACK/RED ORANGE



STEEL/FLO GREEN

BAGS AND PACKS

RESERVOIR PACK

\$99.95

- Large outer compartments hold personal items for those longer rides
- 3 liter BPA-free bladder capacity with an easy clean, big bore top
- Neoprene sleeve prevents drinking tube from kinking
- Easy access tool compartment and spare tube pocket
- Air-mesh padded shoulder straps and adjustable web belt with quick release buckle
- Elastic sleeve securely holds tools in place while riding
- Self-sealing bite valve closes after each drink to eliminate drips
- 600D Polyester Shell, 210D Polyester Lining and PVC Base

CEMENT/RED ORANGE
3519-0036

BLACK/RED ORANGE
3519-0035

STEEL/FLO GREEN
3519-0037



CEMENT/RED ORANGE



BLACK/RED ORANGE



STEEL/FLO GREEN



**BPA-FREE
REPLACEMENT BITE VALVE**
3519-0038
\$4.95



**3L BPA-FREE
REPLACEMENT BLADDER**
3519-0040
\$19.95

VAPOR PACK 2L

\$59.95

- Additional accessory pocket to store personal items on longer rides
- 2 liter BPA-free bladder capacity with easy clean big bore top
- Neoprene sleeve prevents drinking tube from kinking
- Slim profile is designed to be unobtrusive
- Self-sealing bite valve closes after each drink to eliminate drips
- 600D Polyester Shell, 210D Polyester Lining and PVC Base



**BPA-FREE
REPLACEMENT BITE VALVE**
3519-0038
\$4.95



**2L BPA-FREE
REPLACEMENT BLADDER**
3519-0039
\$17.95

- CEMENT/RED ORANGE
3519-0030
- BLACK/RED ORANGE
3519-0029
- STEEL/FLO GREEN
3519-0031



CEMENT/RED ORANGE



BLACK/RED ORANGE



STEEL/FLO GREEN

HYDRANT PACK 3L

\$79.95

- Special clamshell main body opens for extra storage
- Larger outer compartments hold personal items for those longer rides
- 3 liter BPA-free bladder capacity with an easy clean, big bore top
- Designed for riders that want the most water capacity
- Easy access tool compartments
- Neoprene sleeve prevents drinking tube from kinking
- Self-sealing bite valve closes after each drink to eliminate drips
- 600D Polyester Shell, 210D Polyester Lining and PVC Base



**BPA-FREE
REPLACEMENT BITE VALVE**
3519-0038
\$4.95



**3L BPA-FREE
REPLACEMENT BLADDER**
3519-0040
\$19.95

- CEMENT/RED ORANGE
3519-0033
- BLACK/RED ORANGE
3519-0032
- STEEL/FLO GREEN
3519-0034



CEMENT/RED ORANGE



BLACK/RED ORANGE



STEEL/FLO GREEN

BAGS AND PACKS

TECH BACK PACK

\$59.95

- Large main compartment
- 3 exterior pockets
- Foam padded interior laptop/tablet compartment
- Raised air-mesh back pads keep you cool
- Padded air-mesh shoulder straps for comfort
- Adjustable sternum strap for extra support
- 600D Polyester Shell, 210D Polyester Lining and PVC Base

BLACK/RED ORANGE
3517-0375



BLACK/RED ORANGE

RIVAL HELMET BAG

\$29.95

- Micro-fleece liner with inner zipper flap protects your helmet from being scratched during transit
- Side pocket holds accessories
- Ventilation holes promote airflow and decrease odor
- Durable reinforced handles makes transport easy
- 600D Polyester Shell and Nylon Liner

BLACK/RED ORANGE
3514-0028



BLACK/RED ORANGE

TECH VAULT PACK

\$39.95

- Numerous tool slots and compartments securely hold all your riding essentials
- Weight is evenly distributed across the waist
- Heavy-duty adjustable web belt for maximum riding comfort
- Easy access map pouch and side pockets
- 600D Polyester Shell and 210D Polyester Lining

BLACK/RED ORANGE
3510-0072



BLACK/RED ORANGE



* TOOLS NOT INCLUDED

BARRON GOGGLE BAG \$49.95

- Easily holds eight goggles in adjustable fleece lined pockets
- Additional pockets hold extra tear-offs, rolls of film and other items
- Double stitched durable handle
- Expandable design adapts to fit all goggle shapes and sizes
- 600D Polyester Shell, Nylon and Polyester Lining with PVC Base

BLACK/RED ORANGE
3512-0191



BLACK/RED ORANGE

SLAM BACK PACK \$39.95

- Large main compartment
- Inner hanging zip pocket
- Laptop/Tablet compartment
- Two exterior mesh pockets
- Padded shoulder straps
- 600D Polyester Shell and 210D Polyester Lining

BLACK/WHITE
3517-0372

BLACK/RED
3517-0371

RED/NAVY
3517-0373

GREEN/BLUE
3517-0374



RED/NAVY



GREEN/BLUE

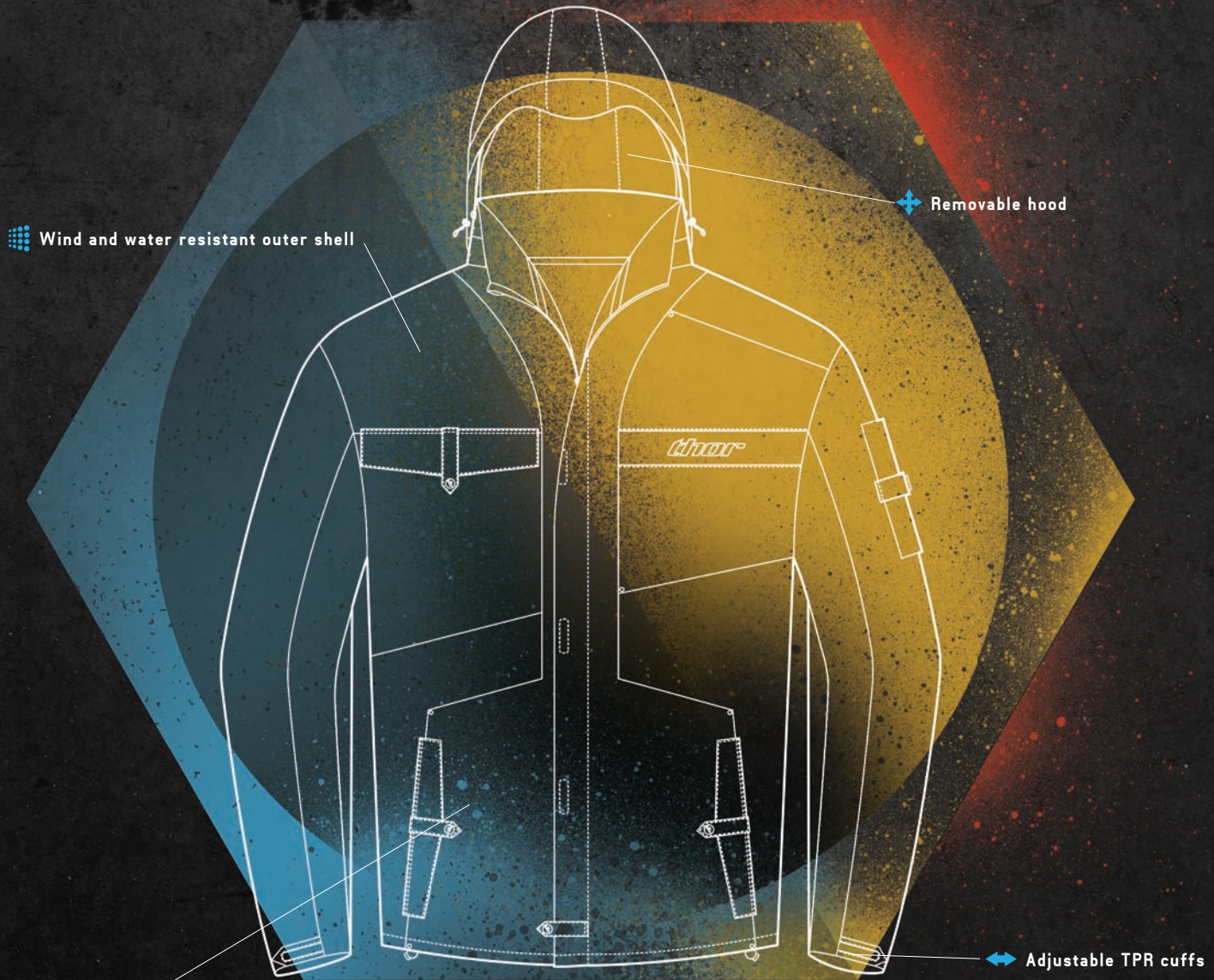


BLACK/RED



BLACK/WHITE

MEN'S SPORTSWEAR



Represent the sport in style with a great selection of quality sportswear. Premium styles and comfortable materials are combined with graphic details and moto-inspired designs that let others know you are part of the moto community.



RYAN VILLOPOTO



MEN'S JACKETS / HOODIES



BLACK

S	M	L	XL	2XL
2920-	0378	0379	0380	0381 0382

PODIUM HEAVYWEIGHT \$159.95

- Wind and water resistant outer shell
- Removable hood
- Multiple zippered pockets
- Adjustable TPR cuffs
- Mesh lined for breathability
- Poly-fill insulation



BLACK

S	M	L	XL	2XL
2920-	0383	0384	0385	0386 0387

TRACKWALK SOFTSHELL \$89.95

- Breathable three-layer soft shell membrane chassis
- Water resistant finish enables light rain and snow to bead off outer material
- Lightweight soft material is flexible without being bulky
- Brushed soft fleece internal chassis
- Full hood with elastic drawstring



BLACK

S	M	L	XL	2XL
2920-	0388	0389	0390	0391 0392

GUSTO WINDBREAKER \$79.95

- Lightweight water resistant polyester shell
- Breathable mesh liner
- Full hood with barrel lock drawstrings
- No-fade sublimated graphics



CHARCOAL/HEATHER

S	M	L	XL	2XL
3050-	3129	3130	3131	3132 3133

WINNERS CIRCLE ZIP-UP \$59.95

- Sweater knit French terry zip-up fleece
- 6 oz 68% cotton 32% polyester
- Woven label



ARMY/HEATHER

S	M	L	XL	2XL
3050-	3134	3135	3136	3137 3138



BLACK/RED

S	M	L	XL	2XL
3050-	3107	3108	3109	3110 3111

PINNED WAFFLE ZIP-UP \$69.95

- 10 oz Premium Thermal
- Moto grip inspired zipper pull
- Sherpa lined
- Embroidered logo



NAVY/WHITE

S	M	L	XL	2XL
3050-	3112	3113	3114	3115 3116

MEN'S HOODIES



GUNMETAL HEATHER/BURGUNDY

S	M	L	XL	2XL
3050 - 3174	3175	3176	3177	3178



GUNMETAL HEATHER/BLACK

S	M	L	XL	2XL
3050 - 3169	3170	3171	3172	3173



OLIVE

S	M	L	XL	2XL
3050 - 3184	3185	3186	3187	3188



BLACK

S	M	L	XL	2XL
3050 - 3179	3180	3181	3182	3183

HUX PULLOVER \$49.95

- 2 tone raglan pullover hood
- 7.5 oz 55% cotton 45% polyester
- Front pouch pocket
- Screen printed graphics

TOTAL MOTO PULLOVER \$49.95

- Premium soft light weight fleece
- 6.5 oz 80% cotton 20% polyester
- Screen printed graphics



NAVY/MINT

S	M	L	XL	2XL
3050 - 3154	3155	3156	3157	3158



BURGUNDY/YELLOW

S	M	L	XL	2XL
3050 - 3159	3160	3161	3162	3163



CHARCOAL/GOLD

S	M	L	XL	2XL
3050 - 3164	3165	3166	3167	3168

GASKET PULLOVER \$49.95

- Premium soft light weight fleece
- 6.5 oz 80% cotton 20% polyester
- Screen printed graphics



BLUE/WHITE

S	M	L	XL	2XL
3050 - 3139	3140	3141	3142	3143



RED/WHITE

S	M	L	XL	2XL
3050 - 3144	3145	3146	3147	3148



CHARCOAL/HEATHER

S	M	L	XL	2XL
3050 - 3149	3150	3151	3152	3153



NAVY/BLACK

S	M	L	XL	2XL
3050 - 3102	3103	3104	3105	3106

SHOP ZIP-UP \$54.95

- Premium soft light weight zip up
- 6.5 oz 80% cotton 20% polyester
- Screen printed graphics
- Contrast draw cord

RUSCH ZIP-UP \$59.95

- 10oz Premium 60% cotton 40% polyester
- Moto grip inspired zipper pull
- Screen printed graphics

MEN'S LONGSLEEVES / POLO



NAVY/GRAY

S	M	L	XL	2XL
3050-	3189	3190	3191	3192 3193



BLACK/GRAY

S	M	L	XL	2XL
3050-	3194	3195	3196	3197 3198



BLACK

S	M	L	XL	2XL
3030-	12502	12503	12504	12505 12506



NAVY

S	M	L	XL	2XL
3030-	12507	12508	12509	12510 12511

POPPA CREW FLEECE \$49.95

- 7 oz 55% cotton 45% polyester
- 1x1 ribbing on the collar cuffs and waistband
- Screen printed graphics

ASCEND L/S TEE \$27.95

- 30 singles super soft 4.5 oz 100% cotton
- Screenprinted graphics
- Woven label



BLACK

S	M	L	XL	2XL
3030-	12472	12473	12474	12475 12476



NAVY

S	M	L	XL	2XL
3030-	12482	12483	12484	12485 12486



GRAY/HEATHER

S	M	L	XL	2XL
3030-	12477	12478	12479	12480 12481

SHOP THERMAL \$29.95

- 40 singles 4.5 oz 60% cotton 40% polyester
- Screenprinted graphics



BLACK

S	M	L	XL	2XL
3030-	12487	12488	12489	12490 12491



WHITE

S	M	L	XL	2XL
3030-	12497	12498	12500	12501



GRAY/HEATHER

S	M	L	XL	2XL
3030-	12492	12493	12494	12495 12496



BLACK

S	M	L	XL	2XL
3040-	1919	1920	1921	1922 1923

TOTAL MOTO L/S TEE \$27.95

- 30 singles super soft 4.5 oz 100% cotton
- Screenprinted graphics
- Woven label

BEND PIT POLO \$54.95

- Race inspired pit shirt with sublimated graphics

MEN'S TEES

- 30 singles super soft 4.5 oz 100% cotton
- Screenprinted graphics
- Woven label



WHITE

S	M	L	XL	2XL
3030-12552	12553	12554	12555	12556

CHEX POCKET TEE \$24.95



NAVY

S	M	L	XL	2XL
3030-12547	12548	12549	12550	12551



BLACK

S	M	L	XL	2XL
3030-12542	12543	12544	12545	12546



RED

S	M	L	XL	2XL
3030-12567	12568	12569	12570	12571

SHOP POCKET TEE \$24.95



CHARCOAL

S	M	L	XL	2XL
3030-12557	12558	12559	12560	12561



SILVER

S	M	L	XL	2XL
3030-12562	12563	12564	12565	12566



NAVY

S	M	L	XL	2XL
3030-12702	12703	12704	12705	12706

DACHE TEE \$21.95



RED

S	M	L	XL	2XL
3030-12707	12708	12709	12710	12711



WHITE

S	M	L	XL	2XL
3030-12712	12713	12714	12715	12716





ROYAL

S	M	L	XL	2XL
3030-	12772	12773	12774	12775 12776

PURE MOTO TEE \$21.95



RED

S	M	L	XL	2XL
3030-	12777	12778	12779	12780 12781



SILVER

S	M	L	XL	2XL
3030-	12782	12783	12784	12785 12786



CHOCOLATE BROWN

S	M	L	XL	2XL
3030-	12602	12603	12604	12605 12606

DOG HOUSE TEE \$21.95



NATURAL

S	M	L	XL	2XL
3030-	12607	12608	12609	12610 12611



WHITE

S	M	L	XL	2XL
3030-	12612	12613	12614	12615 12616



WHITE

S	M	L	XL	2XL
3030-	12752	12753	12754	12755 12756

OMIT TEE \$21.95



MILITARY GREEN

S	M	L	XL	2XL
3030-	12747	12748	12749	12750 12751



BLACK

S	M	L	XL	2XL
3030-	12742	12743	12744	12745 12746

MEN'S TEES

- 30 singles super soft 4.5 oz 52% cotton 48% polyester blend
- Screenprinted graphics
- Woven label



NAVY/HEATHER

S	M	L	XL	2XL
3030 - 12692	12693	12694	12695	12696

ROGUE TEE \$21.95



MEDIUM/HEATHER

S	M	L	XL	2XL
3030 - 12682	12683	12684	12685	12686



KELLY/HEATHER

S	M	L	XL	2XL
3030 - 12687	12688	12689	12690	12691



RED/HEATHER

S	M	L	XL	2XL
3030 - 12697	12698	12699	12700	12701



NAVY/HEATHER

S	M	L	XL	2XL
3030 - 12627	12628	12629	12630	12631

ENDURE TEE \$21.95



CHARCOAL/HEATHER

S	M	L	XL	2XL
3030 - 12617	12618	12619	12620	12621



KELLY/HEATHER

S	M	L	XL	2XL
3030 - 12622	12623	12624	12625	12626



RED/HEATHER

S	M	L	XL	2XL
3030 - 12632	12633	12634	12635	12636



CHARCOAL HEATHER

S	M	L	XL	2XL
3030 - 12572	12573	12574	12575	12576

ASCEND TEE \$21.95



RED HEATHER

S	M	L	XL	2XL
3030 - 12577	12578	12579	12580	12581



ROYAL HEATHER

S	M	L	XL	2XL
3030 - 12582	12583	12584	12585	12586



JASON ANDERSON

MEN'S TEES

- 30 singles super soft 4.5 oz 100% cotton
- Screenprinted graphics
- Woven label



NAVY

S	M	L	XL	2XL
3030-	12762	12763	12764	12765 12766

GASKET TEE \$21.95



RED

S	M	L	XL	2XL
3030-	12767	12768	12769	12770 12771



BLACK

S	M	L	XL	2XL
3030-	12757	12758	12759	12760 12761



BLACK

S	M	L	XL	2XL
3030-	12667	12668	12669	12670 12671

OVERSPRAY TEE \$21.95



NATURAL

S	M	L	XL	2XL
3030-	12672	12673	12674	12675 12676



ROYAL

S	M	L	XL	2XL
3030-	12657	12658	12659	12660 12661

POPPA TEE \$21.95



NATURAL

S	M	L	XL	2XL
3030-	12662	12663	12664	12665 12666



NAVY

S	M	L	XL	2XL
3030-	12587	12588	12589	12590 12591

CLUTCH PLATE TEE \$21.95



RED

S	M	L	XL	2XL
3030-	12592	12593	12594	12595 12596



SILVER

S	M	L	XL	2XL
3030-	12597	12598	12599	12600 12601

MEN'S TEES & TANKS



WHITE

ROYAL

RED

BLACK

CHARCOAL

S M L XL 2XL
3030 - 12737 12738 12739 12740 12741

S M L XL 2XL
3030 - 12732 12733 12734 12735 12736

S M L XL 2XL
3030 - 12727 12728 12729 12730 12731

S M L XL 2XL
3030 - 12717 12718 12719 12720 12721

S M L XL 2XL
3030 - 12722 12723 12724 12725 12726

LOUD N PROUD TEE \$21.95



RED



CHARCOAL



NATURAL



NAVY

S M L XL 2XL
3030 - 12652 12653 12654 12655 12656

S M L XL 2XL
3030 - 12637 12638 12639 12640 12641

S M L XL 2XL
3030 - 12642 12643 12644 12645 12646

S M L XL 2XL
3030 - 12647 12648 12649 12650 12651

MASK TEE \$21.95



BLACK



CHARCOAL/HEATHER



ROYAL/HEATHER

S M L XL 2XL
3030 - 12512 12513 12514 12515 12516

S M L XL 2XL
3030 - 12517 12518 12519 12520 12521

S M L XL 2XL
3030 - 12527 12528 12529 12530 12531

TOTAL MOTO TANK \$19.95

- 30 singles super soft 4.5 oz
- 100% cotton - BLACK color
- Woven label
- Screenprinted graphics
- 52% cotton 48% polyester blend - HEATHER colors

MEN'S HATS & BEANIES



GRAY/TEAL
2501-2252

HUX \$19.95

- Woven patch
- Snapback closure



INDIGO/CHARCOAL
2501-2253



RED
2501-2259

WINNER'S CIRCLE \$19.95

- Woven patch
- Snapback closure



HEATHER
2501-2260



OLIVE/ORANGE
2501-2257

NOOK \$19.95

- Embroidered logo
- Snapback closure



RED/CHARCOAL
2501-2256



BLACK/YELLOW
2501-2258



ORANGE/ALUMINUM
2501-2261

RUSCH \$19.95

- High density printed logo
- Snapback closure



GREEN/YELLOW
2501-2262



BLACK
2501-2254

OMIT \$19.95

- 3D embroidery
- Snapback closure



RED
2501-2255



ROYAL
2501-2251

TRUCKER \$19.95

- 3D embroidered logo
- Mesh with snapback closure



RED
2501-1831



GRAY
2501-1830



BLACK
2501-1829



BLUE
S/M 2501-2267
L/XL 2501-2268

QUALIFIER \$21.95

- 210 Fitted®
- S/M fitted (6 7/8" – 7 1/4")
- Logo applique
- L/XL fitted (7 1/4" – 7 5/8")



GREEN
S/M 2501-2269
L/XL 2501-2270



NAVY
S/M 2501-2263
L/XL 2501-2264

SLIP \$19.95

- Curved bill Flexfit®
- Embroidered logo



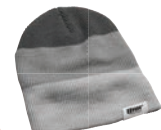
GRAY
S/M 2501-2265
L/XL 2501-2266



RED
2501-2247

TRIPLE BEANIE \$14.95

- 100% acrylic
- Woven patch



GRAY
2501-2246



BLUE
2501-2245



RUBY HEATHER
2501-2248

CHEX BURN BEANIE \$14.95

- 100% acrylic
- Woven patch



BURN ORANGE
2501-2249



BLACK
2501-2250



PURPLE/WHITE
2501-2064

STACKED SKULL CAP \$14.95

- 83% acrylic
- 15% wool
- 2% spandex
- embroidered logo



BLACK/GRAY
2501-2062



BLACK/YELLOW
2501-2067

MACKENZIE POM POM \$14.95

- 83% acrylic
- 15% wool
- 2% spandex
- embroidered logo



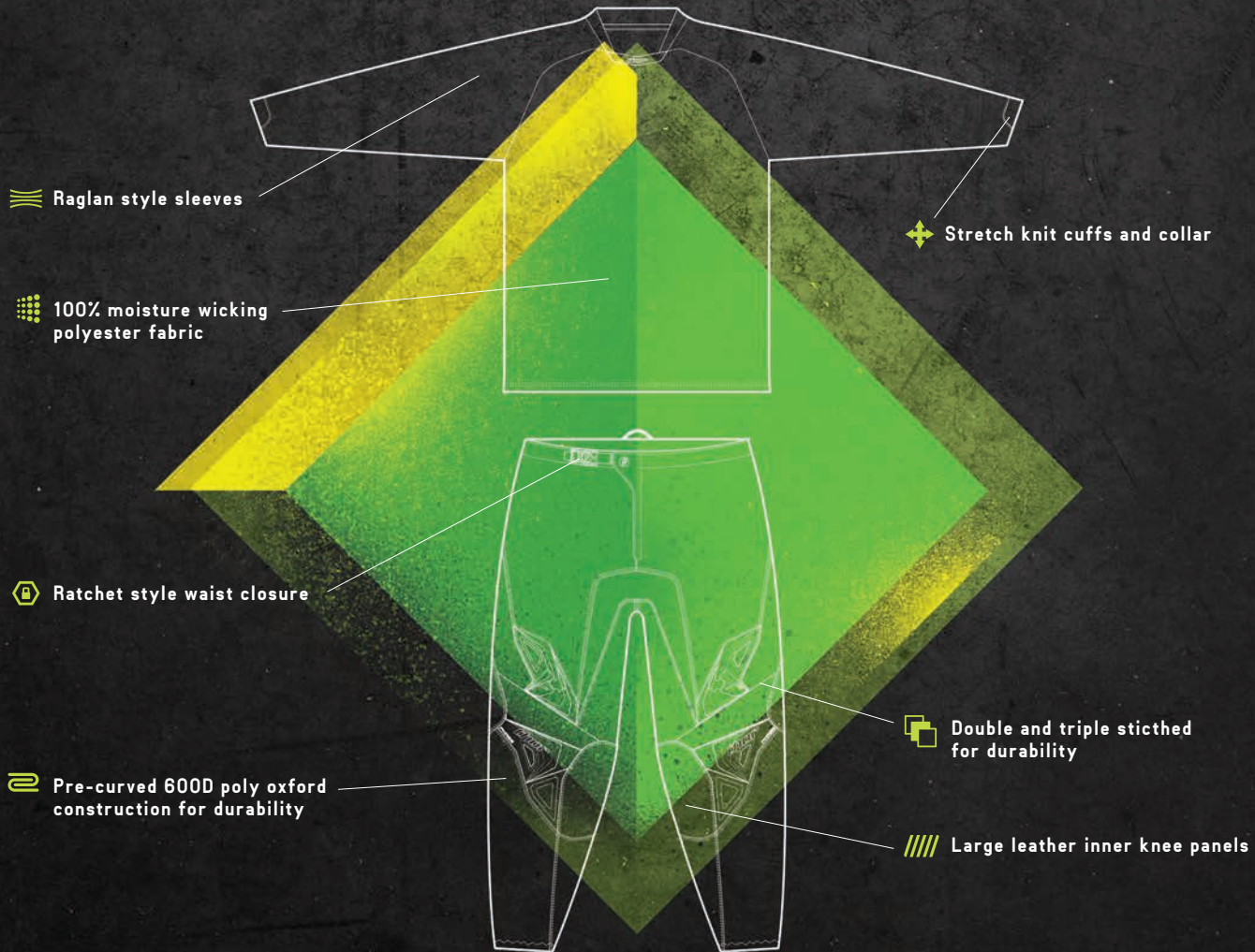
GRAY/MAROON
2501-2068



GRAY/PINK
2501-2069



YOUTH



[PHASE P.124]

The right combination of performance and value in a package that's specifically constructed for young riders. Our youth gear offers great performance and durability while incorporating the same track tested features that goes into our adult gear. We know you can lay it down just like the big boys, so we utilize the best materials, construction and styling for the future champions of tomorrow.



RYDER DIFRANCESCO

YOUTH RACEWEAR
PHASE GASKET

JERSEY \$29.95 PANT \$89.95



KAED KNIFFING



FLO ORANGE / BLACK

JERSEY	2XS	XS	S	M	L	XL
2912-	1304	1305	1306	1307	1308	1309
PANT	18	20	22	24	26	28
2903-	1327	1328	1329	1330	1331	1332

NAVY / LIME

JERSEY	2XS	XS	S	M	L	XL
2912-	1298	1299	1300	1301	1302	1303
PANT	18	20	22	24	26	28
2903-	1321	1322	1323	1324	1325	1326

HEATHER / BLACK

JERSEY	2XS	XS	S	M	L	XL
2912-	1292	1293	1294	1295	1296	1297
PANT	18	20	22	24	26	28
2903-	1315	1316	1317	1318	1319	1320

YOUTH RACEWEAR PHASE HYPERION

JERSEY \$29.95 PANT \$89.95



BLACK / WHITE

JERSEY	2XS	XS	S	M	L	XL
2912-	1268	1269	1270	1271	1272	1273
PANT	18	20	22	24	26	28
2903-	1291	1292	1293	1294	1295	1296

BLACK / GREEN

JERSEY	2XS	XS	S	M	L	XL
2912-	1360	1361	1362	1363	1364	1365
PANT	18	20	22	24	26	28
2903-	1387	1388	1389	1390	1391	1392

BLACK / GOLDEN YELLOW

JERSEY	2XS	XS	S	M	L	XL
2912-	1366	1367	1368	1369	1370	1371
PANT	18	20	22	24	26	28
2903-	1393	1394	1395	1396	1397	1398



RED / WHITE

JERSEY	2XS	XS	S	M	L	XL
2912-	1286	1287	1288	1289	1290	1291
PANT	18	20	22	24	26	28
2903-	1309	1310	1311	1312	1313	1314

BLUE / WHITE

JERSEY	2XS	XS	S	M	L	XL
2912-	1274	1275	1276	1277	1278	1279
PANT	18	20	22	24	26	28
2903-	1297	1298	1299	1300	1301	1302

NAVY / ORANGE

JERSEY	2XS	XS	S	M	L	XL
2912-	1280	1281	1282	1283	1284	1285
PANT	18	20	22	24	26	28
2903-	1303	1304	1305	1306	1307	1308





YOUTH RACEWEAR PHASE RAMBLE

JERSEY \$29.95 PANT \$89.95



BLUE / GREEN

JERSEY	2XS	XS	S	M	L	XL
2912 -	1310	1311	1312	1313	1314	1315
PANT	18	20	22	24	26	28
2903 -	1333	1334	1335	1336	1337	1338

NAVY / RED

JERSEY	2XS	XS	S	M	L	XL
2912 -	1316	1317	1318	1319	1320	1321
PANT	18	20	22	24	26	28
2903 -	1339	1340	1341	1342	1343	1344



TALON HAWKINS



YOUTH RACEWEAR PHASE VENTED DOPPLER

\$29.95

\$89.95

JERSEY

- Athletic mesh construction for maximum ventilation
- Raglan style sleeves
- Stretch knit cuffs and collar
- 100% moisture wicking polyester fabric
- No-fade sublimated graphics

PANT

- Championship-Proven chassis with increased comfort and performance
- Vented fabric construction for maximum airflow
- Leather inner knee panels
- Stretch panels for flexibility
- Double and triple stitched for durability
- Ratchet style waist closure
- Sewn-in liner with hidden inner hip pocket
- Removable hip pads included



BLACK / FLUORESCENT

JERSEY	2XS	XS	S	M	L	XL
2912 -	1322	1323	1324	1325	1326	1327
PANT	18	20	22	24	26	28
2903 -	1345	1346	1347	1348	1349	1350

GRAY / ORANGE

JERSEY	2XS	XS	S	M	L	XL
2912 -	1328	1329	1330	1331	1332	1333
PANT	18	20	22	24	26	28
2903 -	1351	1352	1353	1354	1355	1356

WHITE / BLACK

JERSEY	2XS	XS	S	M	L	XL
2912 -	1334	1335	1336	1337	1338	1339
PANT	18	20	22	24	26	28
2903 -	1357	1358	1359	1360	1361	1362

YOUTH SPECTRUM GLOVES

\$19.95

- Mesh and Airprene construction for increased comfort and performance
- TPR hook and loop closure system
- Finger and hand TPRs for coverage
- Lightweight palm padding for comfort

BLUE	2XS	XS	S	M	L
3332-	0898	0899	0900	0901	0902
WHITE	2XS	XS	S	M	L
3332-	0918	0919	0920	0921	0922
BLACK	2XS	XS	S	M	L
3332-	0893	0894	0895	0896	0897
GREEN	2XS	XS	S	M	L
3332-	0903	0904	0905	0906	0907
VEL	2XS	XS	S	M	L
3332-	0923	0924	0925	0926	0927
ORG	2XS	XS	S	M	L
3332-	0908	0909	0910	0911	0912
RED	2XS	XS	S	M	L
3332-	0913	0914	0915	0916	0917
NAVY/OR	2XS	XS	S	M	L
3332-	0987	0988	0989	0990	0991



YOUTH VOID PLUS GLOVES

\$20.95

- Refined chassis for increased comfort and performance
- Seamless reinforced thumb overlay for increased coverage
- Hook and loop closure system
- Lightweight minimalistic design
- No-fade sublimated graphics
- Single layer, fully perforated palm
- Silicone print on fingertips
- 4-way stretch finger and wrist panels

CIRCULUS CYAN	2XS	XS	S	M	L
3332-	1017	1018	1019	1020	1021
CIRCULUS FLO GRN	2XS	XS	S	M	L
3332-	1022	1023	1024	1025	1026
CIRCULUS ORG	2XS	XS	S	M	L
3332-	1027	1028	1029	1030	1031



PALM VIEW

YOUTH VOID GLOVES

\$18.95

THOR
16

- Lightweight minimalistic design
- No-fade sublimated graphics
- Single layer, fully perforated palm
- Screen printed palm graphics
- 4-way stretch finger and wrist panels
- Slip-on style with no wrist closure

BLEND BLACK	2XS	XS	S	M	L
3332-	0992	0993	0994	0995	0996
BLEND BLUE	2XS	XS	S	M	L
3332-	0997	0998	0999	1000	1001

BEND BLACK	2XS	XS	S	M	L
3332-	0928	0929	0930	0931	0932
BEND NAVY	2XS	XS	S	M	L
3332-	0933	0934	0935	0936	0937

COURSE BLUE	2XS	XS	S	M	L
3332-	1002	1003	1004	1005	1006
COURSE CHARCOAL	2XS	XS	S	M	L
3332-	1007	1008	1009	1010	1011
COURSE RED	2XS	XS	S	M	L
3332-	1012	1013	1014	1015	1016



PALM VIEW



BLEND BLUE



BLEND BLACK



PALM VIEW



BEND BLACK



BEND NAVY



PALM VIEW



COURSE
BLUE



COURSE
CHARCOAL



COURSE
RED

YOUTH ENEMY GOGGLES

SOLID \$22.95

PRINTED & FLUORESCENT \$29.95

**TESTED
& CERTIFIED** 

- Innovative frame with aperture vent for maximum airflow
- Drilled frame ports for increased ventilation and fog resistance
- Anti-fog, scratch resistant lens with UV protection
- Optically correct polycarbonate lens for clear vision
- Clear lens included, replacement lenses available
- Dual post tear-off system ready. Tear-off packs available
- Single layer 12mm face foam for secure seal
- Adjustable woven strap with silicone grip for secure fit
- Plush goggle bag included for safe storage
- Tested and certified according to European Standard EN 1938:2010



SPLATTER/GREEN
2601-1739



SPLATTER/BLACK
2601-1472



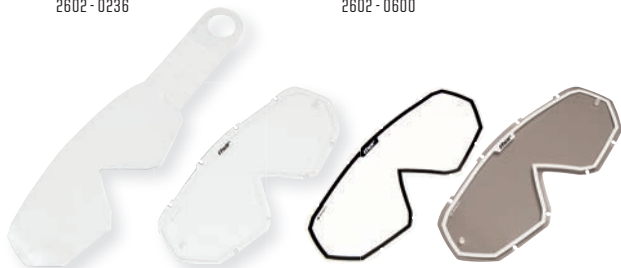
TREAD/RED
2601-1736

TEAR-OFF CLEAR 10 PACK \$6.95
2602-0234

LENS CLEAR / WHT \$6.95
2602-0236

LENS CLEAR / BLK \$6.95
2602-0235

LENS SMOKE \$6.95
2602-0600



WEB/WHITE
2601-1473



FLO GREEN/BLACK
2601 - 1737



FLO ORANGE/BLACK
2601 - 1738



BLUE/WHITE
2601 - 0719



WHITE/BLACK
2601 - 1471



PINK/BLACK
2601 - 0720



BLACK/WHITE
2601 - 0717



RED/BLACK
2601 - 0718

SAFETY WARNING: Riding a motorcycle is a dangerous activity. When riding, always wear a helmet, eye protection and protective clothing. There is no assurance that serious injury or death can be avoided even if you wear the product shown in this catalog and take all precautions to avoid every risk. Please ensure that your Thor products fit properly. Improperly fitting products can impair your ability to control your motorcycle.

YOUTH QUADRANT DEFLECTOR

YOUTH \$59.95 CHILD \$54.95

- Energy absorbing, high density foam padding
- Adjustable side buckle closure system
- Free-floating shoulder system
- Removable arm guards for customized fit
- Refined chest and back contours for a perfect fit
- Optimum airflow passages
- Fully padded neck roll for comfort
- Youth size fits most riders 60-100 LBS (27-45 KG)
- Child size fits most riders 40-60 LBS (18-27 KG)
- Tested and certified according to European Standard EN 14021:2003

**TESTED
& CERTIFIED** 



YOUTH SIZE
FITS MOST RIDERS 60-100 LBS
27-45 KG



CHILD SIZE
FITS MOST RIDERS 40-60 LBS
18-27 KG



YOUTH FLO GREEN/CLEAR
2701 - 0654
CHILD FLO GREEN/CLEAR
2701 - 0659



YOUTH FLO ORG/CLEAR
2701 - 0653
CHILD FLO ORG/CLEAR
2701 - 0658



YOUTH BLK/RED
2701 - 0652
CHILD BLK/RED
2701 - 0657



YOUTH BLK/WHT
2701 - 0651
CHILD BLK/WHT
2701 - 0656



YOUTH CLEAR/BLK
2701 - 0650
CHILD CLEAR/BLK
2701 - 0655

SAFETY WARNING: Riding a motorcycle is a dangerous activity. When riding, always wear a helmet, eye protection and protective clothing. There is no assurance that serious injury or death can be avoided even if you wear the product shown in this catalog and take all precautions to avoid every risk. Please ensure that your Thor products fit properly. Improperly fitting products can impair your ability to control your motorcycle.

YOUTH SENTINEL DEFLECTOR

\$69.95

THOR
16

TESTED & CERTIFIED CE

- Adjustable elastic torso strap with ratcheting buckle closure
- Lightweight and durable injection molded panels
- Strategically placed ventilation ports for maximum cooling
- Soft biofoam padded chassis for maximum comfort
- Tested according to the basic requirements of Directive 89/686/EEC



BLACK
2701-0642



WHITE
2701-0643

YOUTH SECTOR KIDNEY BELT

\$29.95

- Perforated biofoam chassis promotes airflow
- Center pull elastic straps for even support
- Articulated TPR back panels for ergonomic support
- TPR hook & loop closure tabs with integrated thumb stops
- Low profile design improves overall fitment

BLACK
2703-0123

WHITE
2703-0124



YOUTH QUADRANT ELBOW \$21.95

- Adjustable closure system
- Moisture-wicking interior panel reduces chafing
- Stitched-in foam elbow donut for comfort
- Extensive vent channels for airflow

BLACK
2706-0138



YOUTH SECTOR KNEE \$11.95

- Durable polypropylene molded knee and shin panels
- Two adjustable retention straps for a secure fit
- Slim, compact design increases comfort while keeping the weight to a minimum

BLACK
2704-0083



YOUTH QUADRANT KNEE \$24.95

- 2-piece molded knee/shin armor
- Stitched-in foam patella donut for comfort
- Asymmetrical design for a specific fit
- 2 integrated elastic straps for secure fit

BLACK
2704-0241



YOUTH BLITZ BOOTS

COLOR \$129.95

BLACK & WHITE \$119.95

- Pre-curved injection molded shin plate
- 3 fully adjustable straps allow for a custom fit
- Fully synthetic heat shield
- Injection molded medial abrasion plate
- Mesh liner promotes airflow
- Metal toe cap reinforces the outsole strength
- Unidirectional outsole with a steel shank
- Injection molded positive lock buckles
- Tested and certified according to European Standard EN 13634:2010

**TESTED
& CERTIFIED** 

WHT / ORG	1	2	3	4	5	6	7
3411 -	0326	0327	0328	0329	0330	0331	0332
BLK / GRN	1	2	3	4	5	6	7
3411 -	0319	0320	0321	0322	0323	0324	0325
BLK / RED	1	2	3	4	5	6	7
3411 -	0333	0334	0335	0336	0337	0338	0339
WHITE	1	2	3	4	5	6	7
3411 -	0298	0299	0300	0301	0302	0303	0304
BLACK	1	2	3	4	5	6	7
3411 -	0291	0292	0293	0294	0295	0296	0297



WHITE/ORANGE



BLACK/GREEN



BLACK/RED



WHITE



BLACK

YOUTH MX SOCK

\$11.95

- Traditional, thick moto sock construction for moisture control
- Low-density panels in the ankle, shin and instep for comfort

GREEN / YELLOW

3431 - 0290

CHARCOAL / ORANGE

3431 - 0289

BLACK / RED

3431 - 0288

BLACK / CYAN

3431 - 0287



GREEN/YELLOW

CHARCOAL/ORANGE

BLACK/RED

BLACK/CYAN

YOUTH MX COOL SOCK

\$14.95

- Moisture wicking Cool Max® construction
- Over-the-calf height
- Lightweight yet durable material reduces bulk

BLUE / GREEN

3431 - 0291

GREEN / ORANGE

3431 - 0292



BLUE/GREEN

GREEN/ORANGE

YOUTH PACK LITE JACKET

\$49.95

- Rear exhaust vents allow hot air to escape
- Soft dimple mesh lined collar for comfort
- Front and rear storage pockets
- Waterproof membrane shell with taped seams and water resistant zippers
- Adjustable drawstring waist closure
- Elastic cuffs

BLACK S M M XL
2922- 0057 0058 0059 0060



YOUTH SPORTSWEAR
HOODIES / TEES



YOUTH HOODIES / TEES



ROYAL HEATHER

S	M	L	XL
3052-0341	0342	0343	0344



RED/YELLOW

S	M	L	XL
3052-0337	0338	0339	0340



CHARCOAL/GOLD

S	M	L	XL
3052-0345	0346	0347	0348

YOUTH GASKET PULLOVER \$42.95

- Midweight pullover fleece
- Jersey lined hood
- Screen printed graphics
- 8.5 oz 80% cotton 20% polyester



RED/WHITE

S	M	L	XL
3052-0333	0334	0335	0336



BLACK/GRAY

S	M	L	XL
3052-0329	0330	0331	0332

YOUTH SHOP ZIP-UP \$44.95

- Midweight zip up fleece
- Jersey lined hood
- Screen printed graphics
- 8.5 oz 80% cotton 20% polyester



BLACK

XS	S	M	L	XL
3032-2197	2198	2199	2200	2201



RED

XS	S	M	L	XL
3032-2207	2208	2209	2210	2211



BLUE

XS	S	M	L	XL
3032-2202	2203	2204	2205	2206



WHITE

XS	S	M	L	XL
3032-2212	2213	2214	2215	2216

YOUTH TOTAL MOTO TEE \$16.95

- 20 singles 5.5 oz 100% cotton
- Screen printed graphics
- Woven label

YOUTH TEES



NAVY HEATHER

XS	S	M	L	XL	
3032-	2242	2243	2244	2245	2246



KELLY HEATHER

XS	S	M	L	XL	
3032-	2247	2248	2249	2250	2251



RED HEATHER

XS	S	M	L	XL	
3032-	2252	2253	2254	2255	2256

YOUTH ROGUE TEE \$16.95

- 30 singles 4.5 oz 52% cotton 48% polyester
- Woven label
- Screenprinted graphics



NAVY

XS	S	M	L	XL	
3032-	2222	2223	2224	2225	2226



RED

XS	S	M	L	XL	
3032-	2227	2228	2229	2230	2231



BLACK

XS	S	M	L	XL	
3032-	2217	2218	2219	2220	2221

YOUTH GASKET TEE \$16.95

- 20 singles 5.5 oz 100% cotton
- Screenprinted graphics
- Woven label



BLACK

XS	S	M	L	XL	
3032-	2232	2233	2234	2235	2236



WHITE

XS	S	M	L	XL	
3032-	2237	2238	2239	2240	2241



CHARCOAL HEATHER

XS	S	M	L	XL	
3032-	2257	2258	2259	2260	2261



DENIM HEATHER

XS	S	M	L	XL	
3032-	2262	2263	2264	2265	2266

YOUTH OVERSPRAY TEE \$16.95

- 20 singles 5.5 oz 100% cotton
- Screenprinted graphics
- Woven label

YOUTH ASCEND TEE \$16.95

- 30 singles 4.5 oz 52% cotton 48% polyester
- Woven label
- Screenprinted graphics

YOUTH TEES / PJS



KELLY GREEN

XS	S	M	L	XL	
3032-	2182	2183	2184	2185	2186



RED

XS	S	M	L	XL	
3032-	2192	2193	2194	2195	2196



ROYAL

XS	S	M	L	XL	
3032-	2177	2178	2179	2180	2181



ORANGE

XS	S	M	L	XL	
3032-	2187	2188	2189	2190	2191



BLACK

XS	S	M	L	XL	
3032-	2172	2173	2174	2175	2176

YOUTH LOUD N PROUD TEE \$16.95

- 20 singles 5.5 oz 100% cotton
- Screen printed graphics
- Woven label



BLUE/WHITE

S	M	L	
3070-	0916	0917	0918



RED/WHITE

S	M	L	
3070-	0919	0920	0921



MAGENTA/WHITE

S	M	L	
3070-	0922	0923	0924

YOUTH TILT PJS \$42.95

- 2 piece pajamas
- Sublimated race inspired graphics
- Brushed polyester/spandex

YOUTH GIRL'S HOODIES / TEES



BLACK

S	M	L	XL	
3052-	0349	0350	0351	0352

GIRL'S SHOP ZIP-UP \$44.95

- Premium soft lightweight zip up fleece
- 6.5 oz 80% cotton 20% polyester
- Screen printed graphics



ROYAL HEATHER

S	M	L	XL	
3052-	0353	0354	0355	0356



PINK

XS	S	M	L	XL	
3032-	2300	2301	2302	2303	2304

GIRL'S LOUD N PROUD TEE \$16.95

- 4.3 oz ringspun cotton
- Screenprinted graphics
- Woven label



PURPLE

XS	S	M	L	XL	
3032-	2310	2311	2312	2313	2314

GIRL'S GASKET TEE \$16.95

- 4.3 oz ringspun cotton
- Screenprinted graphics
- Woven label



PINK

XS	S	M	L	XL	
3032-	2305	2306	2307	2308	2309



BLACK

XS	S	M	L	XL	
3032-	2315	2316	2317	2318	2319

GIRL'S CRUSH TEE \$16.95

- 4.3 oz ringspun cotton
- Screenprinted graphics
- Woven label



POWDER BLUE

XS	S	M	L	XL	
3032-	2320	2321	2322	2323	2324



PINK

XS	S	M	L	XL	
3032-	2335	2336	2337	2338	2339

GIRL'S SHOP TEE \$16.95

- 4.3 oz ringspun cotton
- Screenprinted graphics
- Woven label



WHITE

XS	S	M	L	XL	
3032-	2340	2341	2342	2343	2344



TURQUOISE

XS	S	M	L	XL	
3032-	2330	2331	2332	2333	2334

GIRL'S BUTTON TEE \$16.95

- 4.3 oz ringspun cotton
- Screenprinted graphics
- Woven label



BLACK

XS	S	M	L	XL	
3032-	2325	2326	2327	2328	2329

YOUTH SPORTSWEAR TODDLER TEES



BLACK

	2T	3T	4T
3032-	2282	2283	2284



RED

	2T	3T	4T
3032-	2288	2289	2290



ROYAL

	2T	3T	4T
3032-	2285	2286	2287



WHITE

	2T	3T	4T
3032-	2291	2292	2293

TODDLER TOTAL MOTO TEE \$16.95

- 4.5 oz Fine Jersey 100% cotton
- Screen printed graphics
- Woven label



KELLY GREEN

	2T	3T	4T
3032-	2273	2274	2275



RED

	2T	3T	4T
3032-	2279	2280	2281



ROYAL

	2T	3T	4T
3032-	2270	2271	2272



ORANGE

	2T	3T	4T
3032-	2276	2277	2278



BLACK

	2T	3T	4T
3032-	2267	2268	2269

TODDLER LOUD N PROUD TEE \$16.95

- 4.5 oz Fine Jersey 100% cotton
- Screen printed graphics
- Woven label



ROYAL

	2T	3T	4T
3032-	2297	2298	2299

TODDLER ASCEND TEE \$16.95

- 4.5 oz Fine Jersey 100% cotton
- Screen printed graphics
- Woven label



BLACK

	2T	3T	4T
3032-	2294	2295	2296

TODDLER OVERSPRAY TEE \$16.95

- 4.5 oz Fine Jersey 100% cotton
- Screen printed graphics
- Woven label



SIDE VIEW

YOUTH TODDLER TEES / PJS



PINK

2T	3T	4T
3032-	2354	2355 2356



TURQUOISE

2T	3T	4T
3032-	2351	2352 2353



PURPLE

2T	3T	4T
3032-	2348	2349 2350



PINK

2T	3T	4T
3032-	2345	2346 2347

TODDLER SHOP TEE \$16.95

TODDLER BUTTON TEE \$16.95

TODDLER LOUD N PROUD TEE \$16.95

- 4.5 oz Fine Jersey 100% cotton
- Screen printed graphics
- Woven label



BLUE/WHITE

2T	3T	4T	5T	6T	8T
3070-	0925	0926	0927	0928	0929 0930



RED/WHITE

2T	3T	4T	5T	6T	8T
3070-	0931	0932	0933	0934	0935 0936



MAGENTA/WHITE

2T	3T	4T	5T	6T	8T
3070-	0937	0938	0939	0940	0941 0942

TODDLER TILT PJS \$37.95

- 2 piece pajamas
- Brushed polyester/spandex
- Sublimated race inspired graphics

YOUTH INFANT SUPERMINIS / PJS



BLUE/WHITE

	0-6M	6-12M	12-18M	18-24M
3070-	0943	0944	0945	0946



RED/WHITE

	0-6M	6-12M	12-18M	18-24M
3070-	0947	0948	0949	0950



MAGENTA/WHITE

	0-6M	6-12M	12-18M	18-24M
3070-	0951	0952	0953	0954

INFANT TILT PJS \$31.95

- 1 piece pajamas
- Brushed polyester/spandex
- Sublimated race inspired graphics



RED/YELLOW BACK VIEW

	0-6M	6-12M	12-18M	18-24M
3032-	2365	2366	2367	2368



BLACK/WHITE

	0-6M	6-12M	12-18M	18-24M
3032-	2357	2358	2359	2360



BLUE/WHITE

	0-6M	6-12M	12-18M	18-24M
3032-	2361	2362	2363	2364

INFANT RUG RACER SUPERMINI \$16.95

- 4.5 oz 100% cotton combed ring spun cotton
- Screen printed graphics
- Woven label



BLACK/PINK

	0-6M	6-12M	12-18M	18-24M
3032-	2369	2370	2371	2372



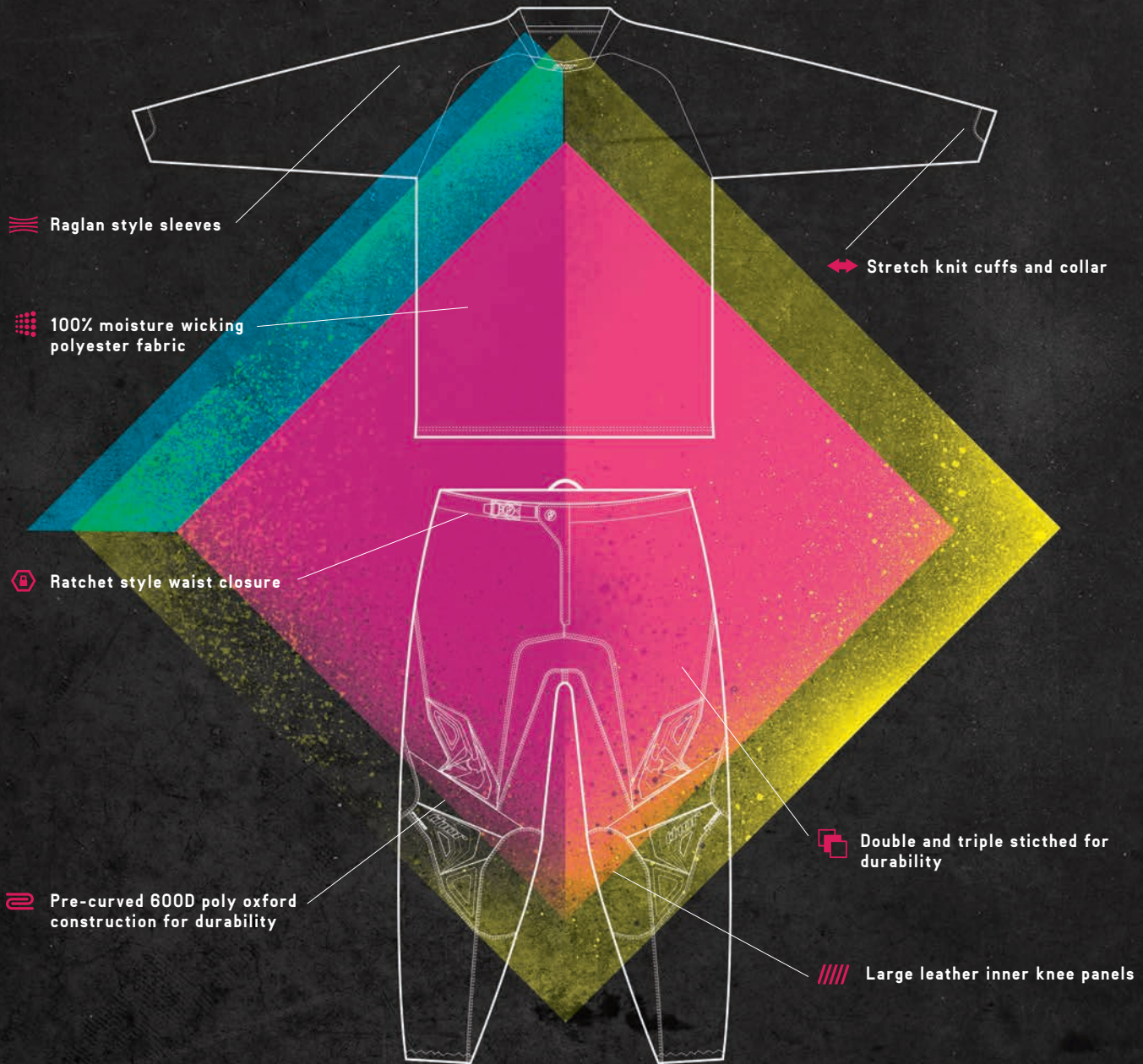
PINK/WHITE

	0-6M	6-12M	12-18M	18-24M
3032-	2373	2374	2375	2376

INFANT CRUSH SUPERMINI \$16.95

- 4.5 oz 100% cotton combed ring spun cotton
- Screen printed graphics
- Woven label

WOMENS



[PHASE P.155]

Don't settle for gear that's cut and patterned for a guy when we've got gear specifically proportioned to fit a woman's shape. Built with a style all its own, our Women's gear is designed and developed to perform. Find your fit and twist the throttle.



THOR
MOTOCROSS

WHIPPLE
13
F

WOMEN'S RACEWEAR
PHASE CLUTCH



JERSEY \$32.95 PANT \$99.95



CHARCOAL / CORAL

JERSEY	XS	S	M	L	XL	
2911 -	0122	0123	0124	0125	0126	
PANT	3/4	5/6	7/8	9/10	11/12	13/14
2902 -	0169	0170	0171	0172	0173	0174

NAVY / WHITE

JERSEY	XS	S	M	L	XL	
2911 -	0127	0128	0129	0130	0131	
PANT	3/4	5/6	7/8	9/10	11/12	13/14
2902 -	0175	0176	0177	0178	0179	0180



WOMEN'S RACEWEAR
PHASE BONNIE

JERSEY \$32.95 PANT \$99.95

WOMEN'S RACEWEAR
PHASE OFF ROAD

PANT \$109.95

PANT

- Refined chassis for increased comfort and performance
- Ratchet style waist closure
- Double and triple stitching
- Two zippered pockets for storage
- Leather inner leg panels
- Sewn in liner with hidden inner hip pocket
- Adjustable snap button and elastic cord ankle closure
- Removable hip pads included



GREEN / YELLOW

JERSEY	XS	S	M	L	XL	
2911-	0117	0118	0119	0120	0121	
PANT	3/4	5/6	7/8	9/10	11/12	13/14
2902-	0163	0164	0165	0166	0167	0168

BLACK / MAGENTA

JERSEY	XS	S	M	L	XL	
2911-	0112	0113	0114	0115	0116	
PANT	3/4	5/6	7/8	9/10	11/12	13/14
2902-	0157	0158	0159	0160	0161	0162

BLACK

PANT	3/4	5/6	7/8	9/10	11/12	13/14
2902-	0151	0152	0153	0154	0155	0156



WOMEN'S SPECTRUM GLOVES

\$21.95

- Mesh and Airprene construction for increased comfort and performance
- TPR hook and loop closure system
- Finger and hand TPRs for coverage
- Lightweight palm padding for comfort

CHARCOAL/CORAL	S	M	L	XL
3331-	0111	0112	0113	0114

WHITE/NAVY	S	M	L	XL
3331-	0115	0116	0117	0118

BLACK/PINK	S	M	L	XL
3331-	0103	0104	0105	0106



WHITE/NAVY



BLACK/PINK



PALM VIEW



CHARCOAL/CORAL

WOMEN'S VOID GLOVES

\$19.95

- Lightweight minimalistic design
- No-fade sublimated graphics
- Single layer, fully perforated palm
- Screen printed palm graphics
- 4-way stretch finger and wrist panels

BLACK/PINK	S	M	L	XL
3331-	0119	0120	0121	0122

GREEN/YELLOW	S	M	L	XL
3331-	0123	0124	0125	0126



PALM VIEW



BLACK/PINK



GREEN/YELLOW

\$69.95

WOMEN'S QUADRANT DEFLECTOR

TESTED & CERTIFIED CE

- Energy absorbing, high density foam padding
- Adjustable side buckle closure system
- Free-floating shoulder system
- Removable arm guards
- Fully padded neck roll for comfort
- Optimum airflow passages
- Refined chest and back contours for a perfect fit
- Fits most riders 100-160 LBS (45-72 KG)
- Tested and certified according to European Standard EN 14021:2003



BLACK/MAGENTA
2701-0649

WOMEN'S BLITZ BOOTS

MAGENTA \$139.95

WHITE \$129.95

TESTED & CERTIFIED CE

- Pre-curved injection molded shin plate
- 3 fully adjustable straps allow for a custom fit
- Fully synthetic heat shield
- Injection molded medial abrasion plate
- Mesh liner promotes airflow
- Metal toe cap reinforces the outsole strength
- Unidirectional outsole with a steel shank
- Injection molded positive lock buckles
- Tested and certified according to European Standard EN 13634:2010

BLACK/MAGENTA	5	6	7	8	9	10
3410-	1478	1479	1480	1481	1482	1483
WHITE	5	6	7	8	9	10
3410-	1201	1202	1203	1204	1205	1206



WHITE



BLACK/MAGENTA

SAFETY WARNING: Riding a motorcycle is a dangerous activity. When riding, always wear a helmet, eye protection and protective clothing. There is no assurance that serious injury or death can be avoided even if you wear the product shown in this catalog and take all precautions to avoid every risk. Please ensure that your Thor products fit properly. Improperly fitting products can impair your ability to control your motorcycle.

WOMEN'S SPORTSWEAR HOODIES



WHITE

S M L XL
3051- 0874 0875 0876 0877



TEAL

S M L XL
3051- 0882 0883 0884 0885



PINK

S M L XL
3051- 0878 0879 0880 0881

POPPA PULLOVER ⁹49.95

- Light weight pullover hood
- 6.5 oz 60% cotton 40%
- Screen printed graphics



PINK

S	M	L	XL
3051-	0858	0859	0860 0861



BLUE

S	M	L	XL
3051-	0854	0855	0856 0857



BLACK HEATHER

S	M	L	XL
3051-	0850	0851	0852 0853

WINNERS CIRCLE ZIP-UP \$54.95

- Sweater knit French terry zip up fleece
- 6 oz 68% cotton 32% polyester
- Woven label



CHARCOAL HEATHER

S	M	L	XL
3051-	0866	0867	0868 0869



RED/WHITE

S	M	L	XL
3051-	0862	0863	0864 0865



BLUE/WHITE

S	M	L	XL
3051-	0870	0871	0872 0873

SHOP ZIP-UP \$54.95

- Premium soft lightweight zip up fleece
- 6.5 oz 80% cotton 20% polyester
- Screen printed graphics
- Contrast draw cord



WOMEN'S SPORTSWEAR

HOODIES / LONGSLEEVES



AQUAMARINE

S	M	L	XL
3051-0890	0891	0892	0893



BLACK

S	M	L	XL
3051-0894	0895	0896	0897



PINK

S	M	L	XL
3051-0886	0887	0888	0889

BUTTON PULLOVER \$49.95

- Light weight pullover hood
- 6.5 oz 60% cotton 40% polyester
- Screen printed graphics



TEAL

S	M	L	XL
3051-0906	0907	0908	0909



PURPLE

S	M	L	XL
3051-0902	0903	0904	0905



FUSCHIA

S	M	L	XL
3051-0898	0899	0900	0901

SCRIPT OFF SHOULDER \$49.95

- Off-the-shoulder French terry scoop crew
- 2x1 ribbing at cuffs and waistband
- Screen printed graphics
- 6 oz 68% cotton 32% polyester
- Raglan sleeves



BLACK

S	M	L	XL
3031-2523	2524	2525	2526



PLUM

S	M	L	XL
3031-2527	2528	2529	2530



TEAL

S	M	L	XL
3031-2531	2532	2533	2534

CRUSH THERMAL \$29.95

- 40 singles 4.5oz 60% cotton 40% polyester
- Screen printed graphics

WOMEN'S SPORTSWEAR TEES



WHITE HEATHER

S	M	L	XL	
3031-	2543	2544	2545	2546



TAHITI BLUE

S	M	L	XL	
3031-	2535	2536	2537	2538



VINTAGE NAVY

S	M	L	XL	
3031-	2539	2540	2541	2542

BUTTON TEE \$21.95

- 4.3 oz Tri-Blend 50% polyester 25% cotton 25% rayon
- Woven loop label
- Screenprinted graphics



INDIGO

S	M	L	XL	
3031-	2547	2548	2549	2550



IVORY

S	M	L	XL	
3031-	2551	2552	2553	2554



PINK

S	M	L	XL	
3031-	2555	2556	2557	2558

SHOP TEE \$21.95

- 36 singles 3.7 oz 100% cotton
- Screenprinted graphics
- Woven loop label



WHITE HEATHER

S	M	L	XL	
3031-	2591	2592	2593	2594



INDIGO

S	M	L	XL	
3031-	2583	2584	2585	2586



VINTAGE PURPLE

S	M	L	XL	
3031-	2587	2588	2589	2590

CRUSH TEE \$21.95

- Tri-Blend 50% polyester 25% cotton 25% rayon
- Scoop neck tee
- Screen printed graphics

WOMEN'S SPORTSWEAR TEES / TANKS



PURPLE

S	M	L	XL
3031-	2579	2580	2581 2582

GASKET TEE \$21.95

- 36 singles 3.7 oz 100% cotton
- Screenprinted graphics
- Woven loop label



DARK CHOCOLATE

S	M	L	XL
3031-	2571	2572	2573 2574



PINK

S	M	L	XL
3031-	2575	2576	2577 2578



RED

S	M	L	XL
3031-	2567	2568	2569 2570

LOUD N PROUD TEE \$21.95

- 36 singles 3.7 oz 100% cotton
- Screenprinted graphics
- Woven loop label



KELLY GREEN

S	M	L	XL
3031-	2559	2560	2561 2562



PURPLE

S	M	L	XL
3031-	2563	2564	2565 2566



VINTAGE PINK

S	M	L	XL
3031-	2603	2604	2605 2606



VINTAGE BLACK

S	M	L	XL
3031-	2595	2596	2597 2598



TAHITI BLUE

S	M	L	XL
3031-	2599	2600	2601 2602

SCRIPT RACERBACK TANK \$21.95

- 4.3 oz Tri-Blend 50% polyester 25% cotton 25% rayon
- Screenprinted graphics
- Woven loop label



ACCESSORIES



BLACK/WHITE
4302-1275

JERSEY ID KIT \$29.95

- Get the factory look on your jersey with our Jersey I.D kit. Iron-on transfer letters and numbers in black, white and gray to show on any color jersey. Enough characters for 2 or more jerseys.
- LETTERS - 6 Each of: A - 5 Each of: E, I, O, U, C - 4 Each of: F, B, M, R, S - 3 Each of: D, F, G, N, T - 2 Each of: H, J, L, P, Q, V-Z
- NUMBERS - 4 Each of: 1, 2 - 3 Each of: 3 - 2 Each of: 4-9, 0
- ASSORTED THOR LOGOS



REPLACEMENT CANOPY \$149.95
4032-0022

BLACK/YELLOW
4030-0010

TRACK CANOPY \$275.95

- 10' x 10' collapsible canopy.
- Quick release folding frame



BLACK/GRAY
9501-0107

RED/BLACK
9501-0108

LANYARDS \$2.95

- Sublimated nylon with metal fastening hook



BLACK
9501-0093

UMBRELLA \$21.95

- 60" in diameter to keep you covered
- Made of durable, but light nylon
- Manual open/cloce, 30" black shaft



WINDSHIELD DECAL
4320-0779

WINDSHIELD DIE-CUT DECAL \$8.95

- 30" die-cut windshield decal



VAN/TRAILER DECAL
4320-0676

VAN/TRAILER DECAL \$14.95

- 36" die-cut van/trailer decal

STICKERS



CORPO SHEET
4320-1444

DECAL SHEET CORPO \$9.95

- 9.5"x13"



HERITAGE SHEET
4320-1572

DECAL SHEET HERITAGE \$9.95

- 9.5"x13"



WHITE
4320-1523

BLACK
4320-1521

DIE-CUT 2 PACKS 6" \$4.95



METALLIC 3 PACK
4320-1575

STACKED METALLIC DIE-CUT 3 PACK 3" \$6.95



FLO 3 PACK
4320-1574

STACKED FLO DIE-CUT 3 PACK 3" \$6.95

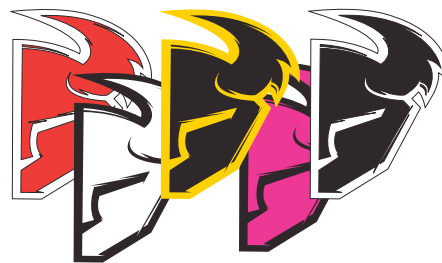


SLANT 9"
4320-0674

SLANT 5"
4320-0672

SLANT DIE-CUT 6 PACK 9" \$12.95

SLANT DIE-CUT 6 PACK 5" \$7.95



MASK 3" 5 PACK
4320-1512

THOR MASK 5 PACK 3" \$6.95



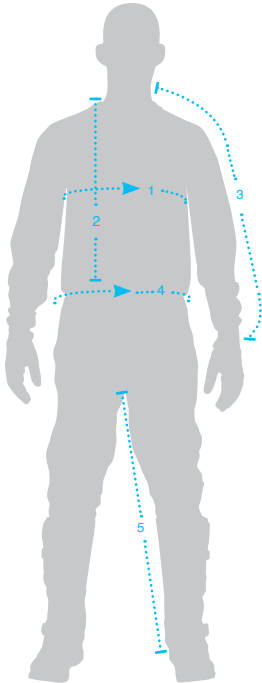
MASK 3" 8 PACK
4320-0477

THOR DIE-CUT 8 PACK 3" \$8.95

SIZING CHARTS

RACEWEAR SIZING

* ALL SIZING CHARTS SERVE ONLY AS A GUIDE. TO ENSURE THE PROPER FIT, ALWAYS TRY ON THE REAL PRODUCT.



MEN'S CORE JERSEY SIZING

	S	M	L	XL	2XL
1. CHEST	19.5"	21"	22.5"	24"	25.5"
2. BODY LENGTH	30.5"	31.5"	32.5"	34.5"	35"
3. SLEEVE LENGTH	29.75"	30.25"	30.75"	31.75"	32.25"

MEN'S PHASE & PRIME JERSEY SIZING

	S	M	L	XL	2XL
1. CHEST	21"	22.5"	24"	25.5"	27"
2. BODY LENGTH	31"	31"	31.5"	32"	33"
3. SLEEVE LENGTH	30"	30.5"	31"	31.5"	32"

MEN'S PRIME FIT JERSEY SIZING

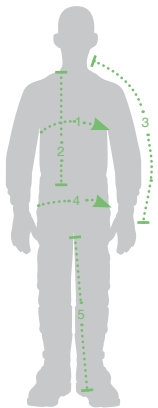
	S	M	L	XL	2XL
1. CHEST	17"	19"	20.5"	22"	24.75"
2. BODY LENGTH	31"	31"	31.5"	32"	33"
3. SLEEVE LENGTH	27.75"	28"	29"	29.5"	30"

MEN'S PANT SIZING

	28	30	32	34	36	38	40	42	44	46	48
4. WAIST	27"-28"	29"-30"	31"-32"	33"-34"	35"-36"	37"-38"	39"-40"	41"-42"	43"-44"	45"-46"	47"-48"
5. INSEAM	27.5"	28"	29"	30"	31"	31.5"	31.5"	32"	32"	32.5"	32.5"

MEN'S OFF-ROAD PANT SIZING

	28	30	32	34	36	38	40	42	44	46	48
4. WAIST	27"-28"	29"-30"	31"-32"	33"-34"	35"-36"	37"-38"	39"-40"	41"-42"	43"-44"	45"-46"	47"-48"
5. INSEAM	29.5"	30"	30.5"	31"	32"	32"	32"	32"	32"	32"	32"

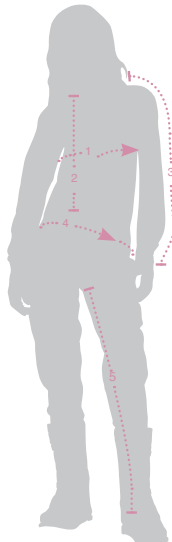


YOUTH JERSEY SIZING

	2XS	XS	S	M	L	XL
1. CHEST	13"	14"	15"	16"	17"	18"
2. BODY LENGTH	20.5"	22"	23.5"	24.5"	26"	27.5"
3. SLEEVE LENGTH	18.5"	20"	21.5"	23"	24.5"	26"

YOUTH PANT SIZING

	18	20	22	24	26	28
4. WAIST	17-18"	19-20"	21-22"	23-24"	25-26"	27-28"
5. INSEAM	16.2"	20.3"	22.3"	23.6"	25.1"	26"



WOMEN'S JERSEY SIZING

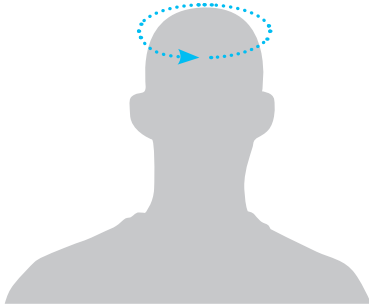
	XS	S	M	L	XL
1. CHEST	18"	19"	20"	21"	22"
2. BODY LENGTH	29"	29.5"	29.5"	30"	30"
3. SLEEVE LENGTH	25"	26.5"	28"	29.5"	30"

WOMEN'S PANT SIZING

	3/4	5/6	7/8	9/10	11/12	13/14
4. WAIST	24"	26"	28"	30"	32"	34"
5. INSEAM	26.5"	27.3"	28"	28.8"	29.5"	30.3"

HELMET & HAT SIZING

* ALL SIZING CHARTS SERVE ONLY AS A GUIDE. TO ENSURE THE PROPER FIT, ALWAYS TRY ON THE REAL PRODUCT.



HELMET SIZING

	XS	S	M	L	XL	2XL
HAT SIZE	6 5/8"-6 3/4"	6 7/8"-7"	7 1/8"-7 1/4"	7 3/8"-7 1/2"	7 5/8"-7 3/4"	7 7/8"-8"
INCHES	20 3/4"-21 1/4"	21 5/8"-22"	22 1/2"-22 3/4"	23 1/4"-23 5/8"	24"-24 1/2"	24 3/4"-25 1/8"
CENTIMETERS	53-54cm	55-56cm	57-58cm	59-60cm	61-62cm	63-64cm

HAT SIZING

	S/M	L/XL
HAT SIZE	6 3/4"-7 1/4"	7 1/8"-7 5/8"
INCHES	21 1/4"-22 3/4"	21 1/2"-24"
CENTIMETERS	54-58cm	57-61cm

BOOT SIZING

* ALL SIZING CHARTS SERVE ONLY AS A GUIDE. TO ENSURE THE PROPER FIT, ALWAYS TRY ON THE REAL PRODUCT.

BLITZ MEN'S SIZING

US	7	8	9	10	11	12	13	14	15
UK	5	6	7	8	9	10	11	12	13
EU	40.5	42	43	44.5	45.5	47	48	49.5	51

BLITZ YOUTH SIZING

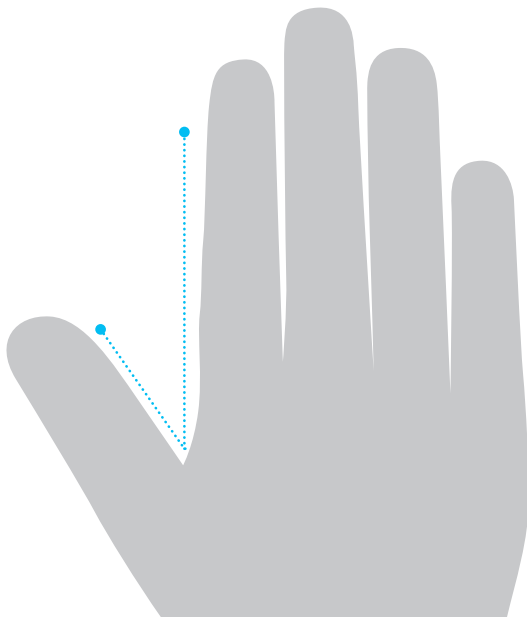
US	1	2	3	4	5	6	7
UK	13	1	2	3	4	5	6
EU	32	33	34	35	36	37	38

BLITZ WOMEN'S SIZING

US	5	6	7	8	9	10
UK	2.5	3.5	4.5	5.5	6.5	7.5
EU	35	36	37	38	39	40

GLOVE SIZING

* ALL SIZING CHARTS SERVE ONLY AS A GUIDE. TO ENSURE THE PROPER FIT, ALWAYS TRY ON THE REAL PRODUCT.



HOW TO DETERMINE YOUR GLOVE SIZE

Thor glove size is determined by measuring the width of your palm at its widest point below the knuckles. To get this measurement, place your hand on the page with the intersection of your thumb and palm positioned at the dotted "V" line and on top of the Men's and Women's measuring guide. This will give you your estimated glove size.

	XS	S	M	L	XL	XXL	MEN'S
--	-----------	----------	----------	----------	-----------	------------	--------------

PRODUCT MATRIX

 YOUTH SIZE AVAILABLE

VERGE REBOUND



WHITE/GRAY (MATTE FINISH)



FLO GREEN/BLACK



FLO ORANGE/BLACK

VERGE TACH



BLACK/WHITE (MATTE FINISH)



FLO GREEN/GRAY (MATTE FINISH)

VERGE SCENDIT



BLUE/SILVER



NAVY/ORANGE

VERGE CONVERGE



RED/BLACK

VERGE SOLIDS



MATTE BLACK



WHITE

SNIPER CHASE



ORANGE/WHITE



LIME/WHITE



BLACK/RED



CHARCOAL/ORANGE



SAND/BLACK

SNIPER WARSHIP

SNIPER BARRED



RED/WHITE



BLUE/WHITE



WHITE/BLACK



YELLOW/BLACK



NAVY/ORANGE

SNIPER GEO

SNIPER CARBON



WHITE/BLACK



BLACK/WHITE



STEEL/BLACK



ORANGE/NAVY



GUNMETAL/GREEN

CONQUER

CONQUER



BLUE/WHITE



YELLOW/BLACK



RED/WHITE



PINK/WHITE



BEND

ALLY

ALLY



PRISM



TRACE



SCORPIO



TRANS BLUE



TRANS GREEN

HERO WRAP



MAGNET



DRIZZLE



EROSION



RIFT



BLUE/WHITE

HERO



TRANS/BLACK



FLAT/BLACK



RED/BLACK



WHITE/ORANGE



BLACK/GREEN

BOMBER



FLO GREEN/BLACK



BLACK/WHITE

ENEMY



FLO GREEN/BLACK



FLO ORANGE/BLACK



TREAD/RED

ENEMY



TREAD/YELLOW



SPLATTER/GREEN



SPLATTER/BLACK



WEB/WHITE



BLUE/WHITE

ENEMY



RED/BLACK



YELLOW/BLACK



PINK/BLACK



WHITE/BLACK



BLACK/WHITE

ENEMY SAND



WHITE/BLACK



FLO ORANGE/BLACK



RED/BLACK



BLACK/WHITE

PRODUCT MATRIX

 YOUTH SIZE AVAILABLE

CORE MERGE



WHITE/PURPLE

NAVY/LIME

BLACK/RED

CORE HUX



BLACK/FLO ORANGE

BLACK/FLO GREEN

WHITE/BLACK

CORE AIR DIVIDE



BLACK/FLUORESCENT

BLACK/MULTI

CORE CONTRO



WHITE/RED

NAVY/FLO ORANGE

KELLY GREEN/YELLOW

PRIME FIT SQUAD



RED/WHITE

WHITE/BLACK

BLUE/YELLOW

PRIME TACH



NAVY/FLO ORANGE

BLACK/FLO GREEN

PHASE STRANDS



BLACK/YELLOW

CEMENT/NAVY

WHITE/RED

PHASE RAMBLE



 BLUE/GREEN

CHARCOAL/RED

 NAVY/RED

PHASE GASKET



 HEATHER/BLACK

 NAVY/LIME

 FLO ORANGE/BLACK

PHASE HYPERION



BLACK/WHITE

BLACK/GREEN

BLACK/GOLDEN YELLOW

RED/WHITE

BLUE/WHITE

NAVY/ORANGE

PHASE BLACKOUT



BLACK

PHASE DOPPLER



BLACK/FLUORESCENT

GRAY/ORANGE

WHITE/BLACK

RANGE GEAR



CHARCOAL/ORANGE

BLACK/CHARCOAL

PHASE OFF ROAD



CHARCOAL/ORANGE

CLOAK - GREEN/FOREST

BLACK

WOMEN'S PHASE CLUTCH



CHARCOAL/CORAL

NAVY/WHITE

WOMEN'S PHASE BONNIE



GREEN/YELLOW

BLACK/MAGENTA

WOMEN'S PHASE OFF ROAD



BLACK

RANGE JACKETS



CHARCOAL/ORANGE

BLACK/CHARCOAL

PHASE JACKETS



CHARCOAL/ORANGE

CEMENT/NAVY

BLACK/CHARCOAL

PACK JACKETS



CHARCOAL/ORANGE

CEMENT/NAVY

BLACK/CHARCOAL

RAIN JACKET



CLEAR

PRODUCT MATRIX

 YOUTH SIZE AVAILABLE

DEFLECTOR



BLACK

WHITE

ORANGE

RED

BLUE

FLOW



BLACK

BLUE

ORANGE

RED

BLACK

INSULATOR



SPECTRUM



 BLACK

 WHITE

 BLUE

 GREEN

 YELLOW

 ORANGE

 RED

 NAVY/ORANGE

IMPACT



BLACK

RED

VOID PLUS GASKET



HEATHER

ORANGE/BLACK

NAVY/GREEN

VOID PLUS CIRCULUS



 CYAN

 FLO GREEN

 ORANGE

VOID PLUS CHEX



BLACK

RED

VOID BLEND



 BLUE

 BLACK

VOID COURSE



 RED

 CHARCOAL

 BLUE

VOID PIXEL



GREEN

VOID BEND



 BLACK

 NAVY

SENTINEL XP



BLACK/WHITE



WHITE/BLACK



BLACK /RED



BLACK /BLUE

SENTINEL



WHITE



BLACK

QUADRANT



BLACK/WHITE



BLACK/CLEAR



BLACK /RED



FLO GREEN/CLEAR



FLO ORANGE/CLEAR

IMPACT RIG



BLACK

FORCE XP KNEE



BLACK RED

STATIC KNEE



BLACK

QUADRANT KNEE



BLACK

SECTOR KNEE



BLACK

STATIC ELBOW



BLACK

QUADRANT ELBOW



BLACK

FORCE BELT



WHITE

BLACK

SECTOR BELT



WHITE

BLACK

PRODUCT MATRIX

 YOUTH SIZE AVAILABLE

COMP FLEX DEFLECTOR



GRAY

COMP DEFLECTOR



BLACK

COMP SHIRT



BLACK

COMP SHORT SE



BLACK

COMP SHORT



BLACK

COMP PANT



BLACK



NAVY/ORANGE

COMP KNEE SLEEVE



BLACK



NAVY/ORANGE

COMP SOCK



BLACK/CHARCOAL



NAVY/ORANGE

BLITZ LS



BLACK



WHITE

RATCHET



BLACK



WHITE

BLITZ



 BLACK/RED



RED/BLUE



 BLACK/GREEN



 WHITE/ORANGE

BLITZ



 BLACK



 WHITE



BLACK ATV SOLE



WHITE

WOMEN'S BLITZ



MAGENTA

WHEELIE BAG



BLACK/RED ORANGE

CIRCUIT BAG



BLACK/RED ORANGE



CEMENT/ORANGE



STEEL/FLO GREEN

EQUIP BAG



BLACK/RED ORANGE

RESERVOIR PACK



BLACK/RED ORANGE



CEMENT/ORANGE



STEEL/FLO GREEN

HYDRANT PACK



BLACK/RED ORANGE



CEMENT/ORANGE



STEEL/FLO GREEN

VAPOR PACK



BLACK/RED ORANGE



CEMENT/ORANGE



STEEL/FLO GREEN

TECH BACKPACK



BLACK/RED ORANGE

RIVAL HELMET BAG BARRON GOGGLE BAG TECH TOOL PACK SLAM BACKPACK



BLACK/RED ORANGE



BLACK/RED ORANGE



BLACK/RED ORANGE



BLACK/RED



BLACK/WHITE



RED/NAVY



GREEN/BLUE



2 RYAN
VILLOPOTO



450 IVAN
RAMIREZ



28 TYLA
RATTRAY



112 CHARLIE
MULLINS



12 MAX
NAGL



113 RUSSELL
BOBBIT



200 ARNAUD
TONUS



37 JOEY
SAVATGY



21 JASON
ANDERSON



991 NATHAN
WATSON



64 THOMAS
COVINGTON

4 DYLAN
FERRANDIS



8 DESTRY
ABBOTT



911 TYLER
BOWERS



47 TODD
WATERS

20 BROCK
TICKLE



1 JORDI
TIXIER



66 CHRIS
ALLDREDGE



496 KACY
MARTINEZ



1 KAILUB
RUSSELL



50 ADAM
CIANCIARULO



33 TAYLOR
ROBERT





12267 CROSTHWAITE CIRCLE
POWAY, CA 92064
THORMX.COM



THORMX.COM

PARTS UNLIMITED **PARTS CANADA** **PARTS EUROPE**

THOR IS A REGISTERED TRADEMARK. ALL RIGHTS RESERVED.
COPYRIGHT © 2015 LEMANS CORPORATION. PRICES AND SPECIFICATIONS SUBJECT TO CHANGE WITHOUT NOTICE.
REPRODUCTION OF THIS CATALOG WITHOUT WRITTEN PERMISSION IS PROHIBITED. PRINTED IN THE USA.



9901-1751