

FIREBRAND DESIGN

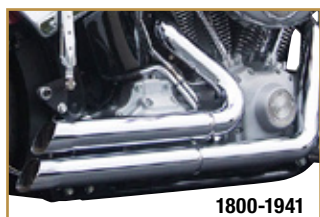
Industry veterans John Peck and Leigh Crawford, are the driving forces behind the all-new Firebrand exhaust. This exciting line-up is so new you will not even find it in the 2016 FatBook™. That's why we serve-up The Skinny. Both John and Leigh started riding before they were 6-years old --John in New Jersey and Leigh in his native South Africa. After their various Education endeavors they found themselves in the motorcycle exhaust industry for the past 12-15 years. Your customers will benefit from this talented team's experience. Watch for more soon.

firebrand
ANYTHING BUT NEUTRAL



UPSTARTS EXHAUST SYSTEMS

- Feature 1¾" head pipes stepped up to 2½" Quadradical up-slash muffler bodies to deliver cutting edge styling, increased performance and deep race sound
- Race inspired 2" baffles, featuring stainless perforated cores and dual layer packing
- Baffles are removable and repackable
- Compatible with 12mm, 18mm and 18mm wideband oxygen sensors
- Made in the U.S.A.



1800-1941



1800-1938

PART #	DESCRIPTION	SUG. RETAIL
FOR 86-16 FXS/FXST/FLS/FLST (EXCEPT FXSB/SE, FXCW/C)		
1800-1941 ¹	Chrome	\$574.95
1800-1942 ¹	Black ceramic	624.95
06-16 FXD/FXDWG (ALL)		
1800-1945	Chrome	574.95
1800-1946	Black ceramic	624.95
FOR 04-16 XL(ALL)		
1800-1937 ²	Chrome	574.95
1800-1938 ²	Black ceramic	624.95

¹ 86-06 models require O₂ available separately.

² 04-06 models require O₂ available separately.

FIFTY TWO52 2-INTO-1 SYSTEMS

- Named after the rpm point at which an engine's horsepower curve equals its torque, these systems were engineered with one priority: performance
- 4" x 12" long muffler bodies with 20° upsweep
- Proprietary Powercurve, True-Merge Collector, 1¾" matched ratio head pipes maximize horsepower and torque
- Race inspired, 2.5" stainless core, high-performance baffle delivers a deep race tone
- Compatible with 12mm, 18mm and 18mm wideband oxygen sensors
- Includes full coverage head pipe heatshields
- Baffles are removable and repackable
- Made in the U.S.A.



1800-1940

NOTE: Requires removal of passenger footpeg for proper installation.

PART #	DESCRIPTION	SUG. RETAIL
FOR 86-16 FXS/FXST/FLS/FLST (EXCEPT FXSB/SE, FXCW/C)		
1800-1943 ¹	Chrome	\$749.95
1800-1944 ¹	Black ceramic	799.95
06-16 FXD/FXDWG (ALL)		
1800-1947	Chrome	749.95
1800-1948	Black ceramic	799.95
FOR 04-16 XL 883/1200 (ALL)		
1800-1939 ²	Chrome	749.95
1800-1940 ²	Black ceramic	799.95

¹ 86-06 models require O₂ sensor plugs available separately.

² 04-06 models require O₂ sensor plugs available separately.

4" GRAND PRIX SLIP-ON MUFFLER

- 4" X 14.5" long muffler body and a billet aluminum end cap with contrasting chrome honeycomb-hex insert
- Free-flowing 2" baffle, featuring stainless perforated core and dual layer packing
- Engineered to deliver an aggressively deep sound and increased performance
- Baffle is removable and re-packable
- Sold each
- Made in the U.S.A.



1801-0890

PART #	DESCRIPTION	SUG. RETAIL
FOR 15-16 XG 500/750		
1801-0889	Chrome	\$249.95
1801-0890	Black ceramic	324.95

DOUBLE DOWN SLIP-ON MUFFLERS

- Four 2½" x 17" long muffler bodies with Quadradical end treatments for a one of a kind hot rod look
- 1¾" tail pipes covered by 220° heat shields
- Compatible with OEM and most aftermarket head pipes
- Baffles are removable and re-packable
- Sold in pairs
- Made in the U.S.A.



PART #	DESCRIPTION	SUG. RETAIL
1801-0871	For 95-16 FLT/FLHT/FLHX/FLHR/FLTR and H-D FL Trike models (except FLRT)	\$849.95

4" GRAND PRIX SLIP-ON MUFFLERS

- 4" x 28.5" long muffler bodies capped with billet aluminum MotoGP inspired end caps featuring chrome honeycomb-hex inserts
- Free-flowing 2.5" baffles, featuring stainless perforated cores and dual layer packing; deliver an aggressively deep sound and increased performance
- Engineered to maximize power in both stock and high-performance motors
- Fit with extended saddlebags and skirts
- Baffles are removable and re-packable
- Compatible with OEM and most aftermarket head pipes
- Sold in pairs
- Made in the U.S.A.



1801-0873

PART #	DESCRIPTION	SUG. RETAIL
FOR 95-16 FLT/FLHT/FLHX/FLHR/FLTR AND H-D FL TRIKE MODELS (EXCEPT FLRT)		
1801-0872	Chrome	\$649.95
1801-0873	Black ceramic	699.95

4" LOOSE CANNON SLIP-ON MUFFLERS

- 4" x 28.5" long muffler bodies with unique flash-suppressor end treatment
- Free-flowing 2.5" baffles, featuring stainless perforated cores and dual layer packing; deliver an aggressively deep sound and increased performance
- Engineered to maximize power in both stock and high-performance motors
- Fit with extended saddlebags and skirts
- Baffles are removable and re-packable
- Optional Quiet Insert sold separately
- Mufflers sold in pairs
- Made in the U.S.A.



1801-0869

1801-0870

PART #	DESCRIPTION	SUG. RETAIL
FOR 95-16 FLT/FLHT/FLHX/FLHR/FLTR AND H-D FL TRIKE MODELS (EXCEPT FLRT)		
1801-0869	Chrome	\$549.95
1801-0870	Black ceramic	599.95
OPTIONAL COMPONENTS		
1861-1069	Quiet Insert (ea.)	19.95



3" LOOSE CANNON SLIP-ON MUFFLERS

- 3" x 18" long muffler bodies with unique flash-suppressor end treatment
- Race inspired 2" baffles, featuring stainless perforated cores and dual layer packing
- Engineered to deliver an aggressive deep sound and improved performance Baffles are removable and re-packable
- Optional Quiet Insert sold separately
- Mufflers sold in pairs
- Made in the U.S.A.

PART #	DESCRIPTION	SUG. RETAIL
FOR 07-16 FLSTF, 07 FXSTD		
1801-0880	Chrome	\$324.95
1801-0881	Black ceramic	349.95
FOR 07-16 FLSTN (EXCEPT FLSTNSE), 12-16 FLS		
1801-0882	Chrome	324.95
1801-0883	Black ceramic	349.95
FOR 07-10 FXST/B/C, 07-16 FLSTC, 13-16 FXSB/SE, 08-11 FXCW/C		
1801-0878	Chrome	324.95
1801-0879	Black ceramic	349.95
FOR 95-16 FXD/B/C/L, 95-08 FXDWG (EXCEPT 14-16 FXDL)		
1801-0884	Chrome	324.95
1801-0885	Black ceramic	349.95
FOR 10-16 FXDWG, 08-16 FXDF/SE		
1801-0886	Chrome	324.95
1801-0887	Black ceramic	349.95
FOR 14-16 XL		
1801-0876	Chrome	324.95
1801-0877	Black ceramic	349.95
FOR 04-13 XL		
1801-0874	Chrome	324.95
1801-0875	Black ceramic	349.95
OPTIONAL COMPONENTS		
1861-1070	Quiet Insert (ea.)	19.95



1801-0881



1801-0885



1801-0878



1801-0876



1861-1070

4" LOOSE CANNON SLIP-ON MUFFLER

- 4" x 28" long muffler body with unique flash-suppressor end treatment
- Free-flowing 2.5" baffles, featuring stainless perforated cores and dual layer packing; deliver an aggressively deep sound and increased performance
- Engineered to maximize power in both stock and high-performance motors
- Baffles are removable and re-packable
- Optional Quiet Insert sold separately
- Sold each
- Made in the U.S.A.

1801-0888



PART #	DESCRIPTION	SUG. RETAIL
FOR 12-16 FLD, 14-16 FXDL		
1801-0888	Chrome	\$279.95
OPTIONAL COMPONENTS		
1861-1069	Quiet insert (ea.)	19.95



1801-1069

MUFFLER PACKING KITS

- Each kit contains enough stainless steel wool and ¼" or ½" thick, high quality fiberglass to repack one muffler
- PART #1861-1071 includes 54" of coarse stainless wooland 22.5" x 15" x ½" Techmat Fiberglass
- PART #1861-1072 includes 26" of coarse stainless wooland 11.5" x 15" x ¼" Techmat Fiberglass
- Cut size and length instructions included
- Made in the U.S.A.



1861-1071

PART #	DESCRIPTION	SUG. RETAIL
1861-1071	For 4" Loose Cannon, Grand prix or Fifty Two52 mufflers	\$19.95
1861-1072	For 2.5" or 3" Loose Cannon, Double Down or Upstarts mufflers	19.95



4" DNT® MEGAPHONE MUFFLERS WITH AN ACOUSTICALLY TUNED BAFFLE

- Feature 16-gauge steel construction throughout
- Specially designed 3-stepped baffle that is acoustically tuned to deliver a unique deep and throaty exhaust sound while providing maximum performance
- Include new-style billet end caps with internal machined flutes
- Available in chrome with chrome end caps
- Sold in pairs
- Made in the U.S.A.



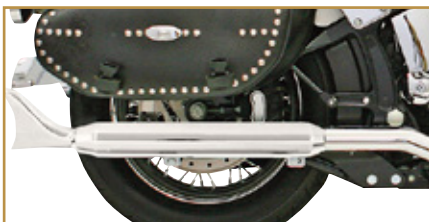
PART #	DESCRIPTION	SUG. RETAIL
1801-0865	For 95-16 FLT, FLHT, FLHX, FLTR, FLHR models	\$689.95



3" FISHTAIL SLIP-ON MUFFLERS

- Designed specifically for use with Bassani Power Curve Crossover header pipes for Softails, PART #s 1800-0638 and 1800-1201
- Chrome mufflers feature 2.25" fiberglass-wrapped, non-removable baffles
- Sold in pairs
- Made in the U.S.A.

NOTE: Mufflers listed will not interchange with OEM components.

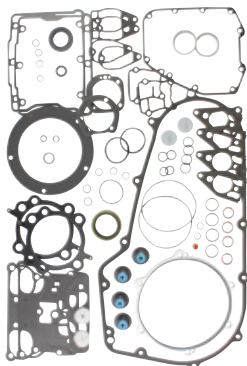


PART #	DESCRIPTION	SUG. RETAIL
1801-0863	For Power Curve true-dual crossover header pipes for Softails	\$499.95



EXTREME SEALING TECHNOLOGY (EST) COMPLETE GASKET KITS

- Every gasket in these kits uses the best materials possible for its intended application
- Multi-Layer Steel (MLS) head gaskets
- Steel Viton®-coated base gaskets
- Blue Viton valve stem seals
- Aluminum Foam Material (AFM) race-style exhaust gaskets
- Complete kits include motor gasket kit plus primary, derby and inspection cover gaskets
- Made in the U.S.A.



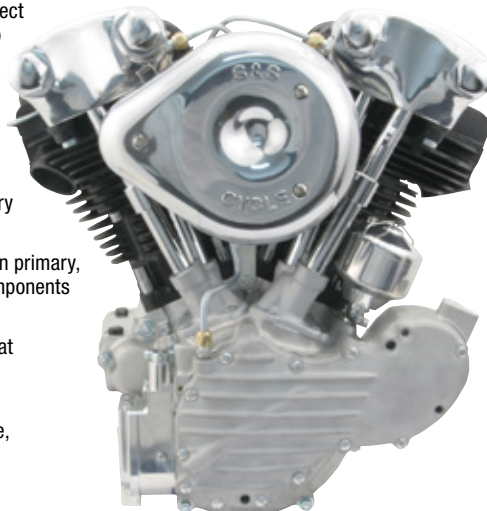
0934-4743

PART #	DESCRIPTION	SUG. RETAIL
FOR 06-16 DYNA MODELS		
0934-4743	W/ 3.937" bore, .040" head gasket	\$215.95
0934-4744	W/ 3.937" bore, .030" head gasket	215.95



KN-93 SERIES ENGINE

- Natural crankcases and black powder-coated cylinders and heads
- S&S Super Stock™ single fire ignition system and polished billet timer protect engine with a three-step break-in rev-limiter for first 24-hours of operation
- S&S Super E carb
- Correct length sprocket shaft for 1970-up primary and transmission
- Allows the use of modern primary, transmission, clutch components and electrical system
- Includes oil filter mount at generator location
- 93" displacement, 8.2:1 compression, 4½" stroke, 3⅝" bore

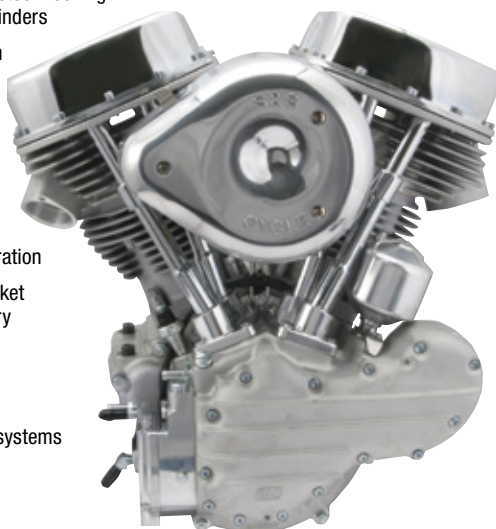


PART #	DESCRIPTION	SUG. RETAIL
0901-0181	For 70-99 custom chassis, with alternator style primary	\$9,094.95



P-93 SERIES ENGINE

- Natural crankcases and stock-looking silver powder-coated cylinders
- S&S hydraulic valve train with roller rocker arms
- S&S billet timer and S&S Super Stock single-fire ignition system protect engine with a three-step break-in rev-limiter for first 24-hours of operation
- Has correct length sprocket shaft for 1970-up primary and transmission
- Includes oil filter mount at generator location
- Accepts 66-84 exhaust systems
- 66-84 intake ports with O-ring inlets
- 93" displacement, 8.5:1 compression, 4½" stroke, 3⅝" bore



PART #	DESCRIPTION	SUG. RETAIL
0901-0180	For 70-99 custom chassis with alternator style primary	\$7,994.95



CARB SUPPORT BRACKET FOR S&S CARB*

- Provides additional support for the carb and air cleaner
- Black powder-coated steel
- Made in the U.S.A.

NOTE: Breather kits/bolts sold separately.

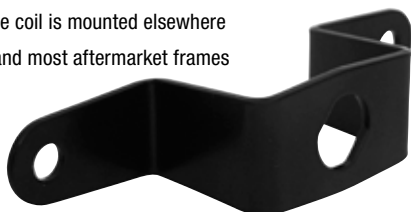


PART #	DESCRIPTION	SUG. RETAIL
1013-0109	For 91-06 XL model w/ S&S carb	\$34.95



CUSTOM HEAVY-DUTY IGNITION SWITCH MOUNT*

- Fits in coil location when the coil is mounted elsewhere
- Fits OEM frames 48 to 84 and most aftermarket frames
- Black powder coated steel
- Made in the U.S.A.



PART #	DESCRIPTION	SUG. RETAIL
2106-0358	For 48-E84 Big Twin models	\$34.95



CUSTOM HEAVY-DUTY COIL BRACKET*

- Heavy Duty coil mount
- On most Shovelheads this mount has been welded numerous of times
- Fits OEM frame's 65 to 82 and most aftermarket frames
- Tumbled stainless steel
- Made in the U.S.A.



PART #	DESCRIPTION	SUG. RETAIL
2102-0354	For 65-82 Big Twin models	\$21.95



MOUNTING PLATE FOR "REV" SERIES 200 WATT AMP

- This optional mounting plate for PART #4405-0352, allows amp to be mounted in 15-16 FLTRX/FLTRXS models



PART #	DESCRIPTION	SUG. RETAIL
4405-0423	Optional amp mounting plate for 15-16 FLTRX/FLTRXS	\$29.95



CAN-BUS CONTROLLERS*

- A CAN-BUS controller is an absolute necessity when changing handlebars and switches on any 11-16 model because of the factory CAN-BUS handlebar switch assemblies that make changing these handlebars next to impossible
- So simple to use; just plug the unit into the factory harness under the fuel tank and wire up any pre-CAN-BUS handlebar switch assemblies of your choice
- Made in the U.S.A.,



2050-0246



2050-0245

PART #	DESCRIPTION	SUG. RETAIL
2050-0246	For 14-16 FLHT/FLHX/FLHR/FLTRX	\$275.95
2050-0245	For 11-16 FXST/FLST, 12-16 Dyna, 14-16 XL	275.95



8.8MM SPARK PLUG WIRE SET*

- Constructed with silicone throughout the jacket, insulation and core to deliver high-temperature resistance
- Rated at SAE Class E J2031 with a continuous operating temperature of 450° F
- Made in the U.S.A.



PART #	DESCRIPTION	SUG. RETAIL
2104-0297	For 15-16 XG500/750	\$29.95



LED HEADLIGHT BULB

- Replaces H8, H9, H11 and H16 bulbs
- Brighter and whiter than halogen bulbs
- Consumes less power
- Low/high beam function
- 12-24 volts, 6,000° Kelvin color temperature
- Two-prong plug, cooling fan and driver
- Easy plug-n-play installation



2060-0523



2060-0524

NOTE: Not DOT-compliant.

PART #	DESCRIPTION	SUG. RETAIL
FOR 14-16 FLHX/FLHR		
2060-0523	25W/50W	\$99.95
2060-0524	20W/40W	99.95



WEDGY EZ LED TAILLIGHTS

- 32 super-bright LEDs with running light, brake light and turn signal functions
- Easy to install; mount in saddlebags, fillers or any flat surface
- Measure 5.5" x 2.25"
- Sold in pairs



2040-1709

2040-1814

PART #	DESCRIPTION	SUG. RETAIL
2040-1709	Chrome	\$299.00
2040-1814	Black	299.00

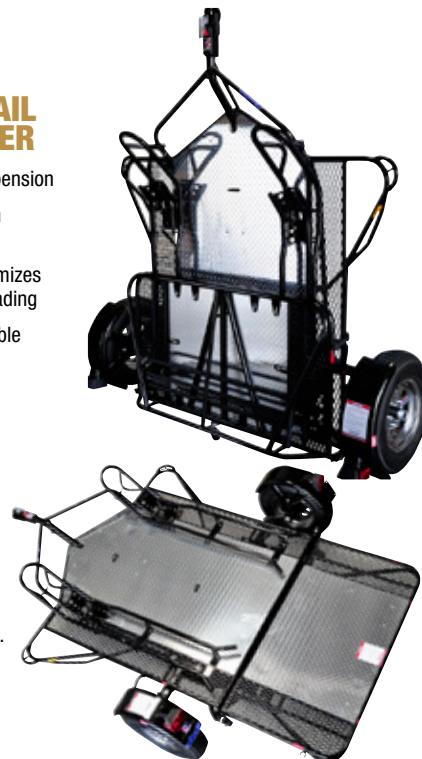
KENDON INDUSTRIES

The stand-up folks at Kendon point out that sometimes the destination is more important than the journey. Sometimes it's about what bikers experience once they get there and not so much what they see along the way. Their latest line of Stand-Up Trailers are available in a range that includes something for every bike, or bikes. And the beauty of it is, when not in use, these trailers STAND-UP™ and out-of-the-way until the next destination is chosen.



KENDON® DUAL-RAIL STAND-UP™ TRAILER

- Independent torsion bar suspension
- Raised Rail Guidance System and front wheel chocks
- Low ramp to deck apex minimizes clearance problems when loading
- Optional center rail kit available
- Removable rails for general utility use
- Bikes can be safely hauled on one side, both sides or in the middle
- Always push your bike onto a standard model trailer
- Standing footprint only 27" x 86"
- Carrying capacity is 2,000 lb.
- Unloaded weight is 420 lb.



PART #	DESCRIPTION	SUG. RETAIL
3901-0003	Dual-Rail	\$3,299.95

KENDON® DUAL-RAIL RIDE-UP, SRL STAND-UP™ TRAILER

- Conveniently and easily ride your bikes onto the trailer
- SRL technology eliminates loading clearance problems
- Extra-wide ramp and deck extensions for safe footing while loading
- Independent torsion bar suspension
- Optional center rail kit available
- Raised Rail Guidance System and front wheel chocks
- Bikes can be safely hauled on one side, both sides or in the middle
- Standing footprint only 27" x 86"
- Carrying capacity is 2,000 lb.
- Unloaded weight is 450 lb.



PART #	DESCRIPTION	SUG. RETAIL
3901-0004	Dual-Rail Ride-Up	\$3,699.95

KENDON® SINGLE-RAIL RIDE-UP, SRL STAND-UP™ MOTORCYCLE TRAILER

- Conveniently and easily ride your bike onto the trailer
- SRL technology eliminates loading clearance problems
- Extra-wide ramp and rear section for safe footing while loading
- Independent torsion bar suspension
- Raised Rail Guidance System and front wheel chock
- Very lightweight for ease of use and one-person maneuverability
- Standing footprint only 27" x 72"
- Carrying capacity is 1,000 lb.
- Unloaded weight is 350 lb.



PART #	DESCRIPTION	SUG. RETAIL
3901-0002	Single-Rail Ride-Up	\$2,999.95

KendonStand-Up TRAILERS & LIFTS

KENDON® THREE-RAIL DIRT/ SPORT/SCOOTER STAND-UP™ MOTORCYCLE TRAILER

- Perfect for 3 dirt bikes, 2 sport bikes, or 3 scooters
- Independent torsion bar suspension
- Expanded metal deck allows dirt and debris to fall through
- Raised Rail Guidance System and front wheel chocks
- Low ramp to deck apex minimizes clearance problems when loading
- Bikes can be safely hauled on one side, both sides or in the middle
- 52" x 70" deck area with removable center rail
- Standing footprint only 27" x 84"
- Carrying capacity is 1,500 lb.
- Unloaded weight is 380 lb.



PART #	DESCRIPTION	SUG. RETAIL
3901-0005	Three-Rail	\$2,799.95

KendonStand-Up TRAILERS & LIFTS

KENDON® SINGLE-RAIL STAND-UP™ TRAILER

- Independent torsion bar suspension
- Raised Rail Guidance System and front wheel chock
- Low ramp to deck apex minimizes clearance problems when loading
- Removable rail for general utility use
- Very lightweight for ease of use and one-person maneuverability
- Always push your bike onto a standard model trailer
- Standing footprint only 27" x 72"
- Carrying capacity is 1,000 lb.
- Unloaded weight is 300 lb.



PART #	DESCRIPTION	SUG. RETAIL
3901-0001	Single-Rail	\$2,599.95

KendonStand-Up TRAILERS & LIFTS

13" RADIAL SPARE TIRE AND WHEEL

- Standard radial 13" tire and steel wheel for 2014 and later Stand-Up™ trailers
- Size: 25" x 25" x 8"
- Weighs 34 lb.



PART #	DESCRIPTION	SUG. RETAIL
3901-0006	Spare tire and wheel	\$179.95

LEGEND WWW.LEGENDSUSPENSIONS.COM

LEGEND AERO-A WWW.LEGENDSUSPENSIONS.COM

LEGEND AERO-A SPORTSTER ADJUSTABLE AIR SUSPENSION

- All the benefits of Legend AERO suspension systems above plus six external knob adjustments allow the fine-tuning of rebound damping
- Provides optimum rebound performance for any given rider weight, personal ride-quality preference or personal riding style
- Light to heavy riders can fine-tune ride preference
- Riders with aggressive to casual styles can tune to desired quality or personal preference
- Optional chrome handlebar-mounted control sold separately (PART #s 0616-0039 or 0616-0207)
- Made in the U.S.A.



PART #	DESCRIPTION	SUG. RETAIL
1311-0149	For 14-16 Sportsters w/o ABS	\$1,849.95

LEGEND WWW.LEGENDSUSPENSIONS.COM

LEGEND AERO WWW.LEGENDSUSPENSIONS.COM

LEGEND AERO SPORTSTER AIR SUSPENSION

- Legend AERO suspension systems set the high mark in ultimate ride quality
- Exclusive Aramid Fiber air spring technology provides spring rate adjustability
- Air springs maximize wheel travel and adjust to any desired ride height
- Fitment accommodates 13" and 12" needs
- Spherical mount bearings top and bottom
- Hard anodized machined aluminum bodies
- Legend's low-friction seals eliminate stiction
- High Flow Piston reacts quickly for improved fluid flow management
- Deflective Disc Valved Damping self-adjusts to frequency and ensures controlled performance
- Air compressor included, pre-wired and model-specific mounting
- NAMZ/Legend complete wire harness installs with three easy Deutsch connectors
- System includes OEM-style black handlebar-mounted control for easy "on-the-go" adjustability
- Optional chrome handlebar-mounted control sold separately (PART #s 0616-0039 or 0616-0207)
- Made in the U.S.A.



PART #	DESCRIPTION	SUG. RETAIL
1311-0148	For 14-16 Sportsters w/o ABS	\$1,649.95

DRAG
Specialties
seats

SOLO SEATS

- Automotive-grade vinyl covers
- Café-style seat with molded flexible urethane foam for maximum comfort and improved styling
- 3/16" ABS thermoformed seat base with fully carpeted bottom and rubber bumpers to protect paint
- Seat mounts to the center hole in the fender
- Not compatible with rear solos
- Includes mounting hardware
- Made in U.S.A.



0804-0607



0804-0608



0804-0609

PART #	DESCRIPTION	SUG. RETAIL
FOR ALL 10-16 XL MODELS (20" L X 10 3/4" W)		
0804-0607	Smooth	\$209.95
0804-0608	Classic stitch	219.95
0804-0609	Double Diamond stitch	219.95

DRAG
Specialties
seats

**EXTENDED REACH
PREDATOR SEATS**

- The Extended Reach seat moves the rider up and back to accommodate individuals with a longer inseam
- Adds 4 1/2" of extra leg room up and back compared to the stock seat (may vary by model)
- Automotive-grade vinyl cover
- Molded flexible urethane foam for maximum comfort
- 3/16" ABS thermoformed seat base with fully carpeted bottom finishes off the seat and rubber bumpers to protect paint
- Includes mounting hardware
- Made in U.S.A.



0804-0610



0804-0611

PART #	DESCRIPTION	SUG. RETAIL
FOR ALL 04-16 XL MODELS (27" L X 13" W)		
0804-0610	Smooth	\$259.95
0804-0611	Single Diamond stitch	269.95

DRAG
Specialties
seats

**LOW-PROFILE DOUBLE
BUCKET SEATS**

- Automotive-grade vinyl covers
- Molded flexible urethane foam for maximum comfort
- 3/16" ABS thermoformed seat base with fully carpeted bottom finishes off the seat and rubber bumpers to protect paint
- Include mounting hardware
- Made in U.S.A.



0804-0604



0804-0605



0804-0606

PART #	DESCRIPTION	SUG. RETAIL
FOR ALL 10-16 XL MODELS (27" L X 12" W FRONT; 27" L X 10" W REAR)		
0804-0604	Smooth	\$299.95
0804-0605	Double-Diamond stitch	309.95
0804-0606	Pillow	299.95

EMIGO

**1" APE HANGER
HANDLEBARS**

- Popular Ape Hanger style made from high-strength carbon steel
- Brilliant chrome finish
- Bars are not drilled, dimpled or knurled



0601-3283

PART #	END RISE	WIDTH	CENTER WIDTH	PULLBACK	SUG. RETAIL
0601-3281	12"	32"	5.5"	7.5"	\$41.95
0601-3282	14"	32"	5.5"	7.5"	51.95
0601-3283	16"	32"	5.5"	7.5"	51.95
0601-3284	18"	32"	5.5"	7.5"	54.95



CHAMPION SOLO SEAT

- Offers more padding than the Challenger seat for Dynas
- Vacuum-formed ABS plastic pan with injection-molded, closed-cell polyurethane foam padding
- Hand-stitched, heavy-duty vinyl cover
- Chrome-plated tail bracket fits stock H-D mounting points on most stock and select aftermarket fenders



PART #	DESCRIPTION	SUG. RETAIL
FOR 06-16 DYNA GLIDE		
0803-0492	Smooth	\$199.95



ATLAS SEAT

- Offers a clean, lean alternative for older Dynas
- Vacuum-formed ABS plastic pan with injection-molded, closed-cell polyurethane foam padding
- Hand-stitched, heavy-duty vinyl cover
- Chrome-plated tail bracket fits stock H-D mounting points on most stock and select aftermarket fenders



PART #	DESCRIPTION	SUG. RETAIL
FOR 96-03 FXD		
0803-0491	Smooth	\$249.95



SPORTY-8 SEAT

- A leaner and cleaner version of the stock solo seat H-D introduced on the 1200X (Forty-Eight)
- Vacuum-formed ABS plastic pan with molded polyurethane foam padding
- Hand-sewn, heavy-duty black vinyl cover
- Plated steel mounting brackets
- Seats are a direct bolt-on for 04-06/10-16 XL models with stock frame and rear fender; will work on 07-09 models if ECM is relocated



PART #	DESCRIPTION	SUG. RETAIL
FOR 04-06/10-16 XL (13$\frac{3}{8}$" L X 10$\frac{1}{4}$" W X 3$\frac{1}{2}$" T)		
0804-0616	Smooth	\$174.95



CONTINENTAL SEAT

- Features a trim silhouette styling
- Vacuum-formed ABS plastic pan with injection-molded, closed-cell polyurethane foam padding
- Hand-stitched, heavy-duty vinyl cover
- Chrome-plated tail bracket fits stock H-D mounting points on most stock and select aftermarket fenders



PART #	DESCRIPTION	SUG. RETAIL
FOR 06-16 DYNA GLIDE		
0803-0490	Smooth	\$249.95



1 $\frac{1}{4}$ " CHUBBY® HANDLEBARS

- Handlebars are 25% thicker than stock
- All bars are precision machined (not swage formed) at control mounts, providing perfect fit, form and unsurpassed look
- Designed with fluid bends at precise angles for maximum comfort and control
- Pre-drilled for internal wiring
- Work with hydraulic clutch, stock and most custom controls, stock risers and top clamps

- Available in show-chrome finish or Blackout series, which features a semi-gloss black finish to match OEM black switch housings
- All handlebars work with Throttle-By-Wire as well as cable applications
- Made in the U.S.A.

NOTE: All bars work with H-D® heated grips.

NOTE: Not for FLHT/FLHX models



CHROME PART #	SUG. RETAIL	BLACK PART #	SUG. RETAIL	DESCRIPTION	END RISE	WIDTH
0601-3324	\$235.95	0601-3325	\$235.95	Chubby 10" Flatline bars	10"	24"
0601-3326	235.95	0601-3327	235.95	Chubby 12" Flatline bars	12"	24"



HANDY

It is a well-known fact that when a lift goes down in your shop, profits go down in your bank. We now stock a full range of Handy Lifts for a wide range of applications and shop requirements.

All Handy equipment is manufactured by hand in the heart of the U.S.A., and meets the highest quality standards for shop equipment. Keep your service department UP and running strong with Handy.



ELECTRIC HYDRAULIC LIFTS

- All the best features you've always wanted in your powersport lift can be found in Handy's Hydraulic Lift
- This lift handles nearly every project you can throw at it with a lifting capacity of 1,500 lb.
- The self-storing rear drop-out panel is ideal for easy tire changing and the 18" front drop-leaf panel gives you easy access to your bike's front wheel and fork
- Automated locking safety latch system with 10 safety stops allows for various working heights
- Raises to a max height of 48" and lowers to a minimum height of 7¾"
- Working space measures 86⅝" L x 29½" W
- Rear drop-out panel measures 14⅛" W x 23" L; front drop-leaf panel measures 29½" W x 15⅜"
- Ramp measures 17½" W x 36" L
- Tool tray/toe guard measures 14¾" W x 66" L
- Power source is electric hydraulic, 120V, 60 hz, single phase
- Weighs 735 lb.
- Cycle vise and 12" side extensions also available; sold separately

NOTE: This is drop ship product; no returns.



PART #	DESCRIPTION	SUG. RETAIL
ELECTRIC HYDRAULIC LIFTS		
4110-0111	Gray	\$2,539.95
4110-0112	Orange	2,636.95
4110-0113	Red	2,636.95
4110-0114	Black	2,636.95
ACCESSORIES		
4110-0087	Cycle Vise	152.95
4110-0115	12" Side extensions	507.95

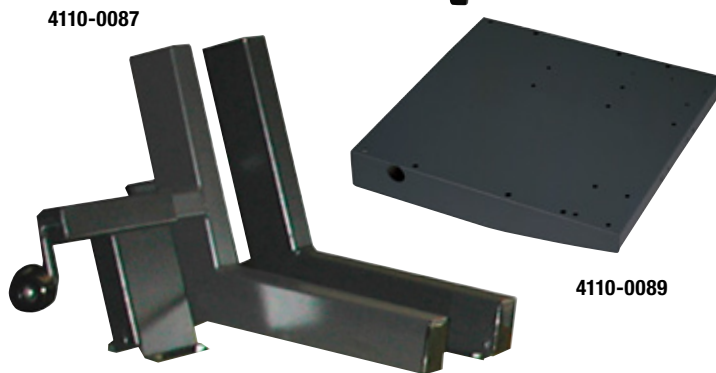
HANDY S.A.M. 1000 AIR LIFTS

- Built with all the same features of the 1000, but with an additional 4" length and a drop-out panel for easy tire removal
- Weight capacity of 1,000 lb.
- Measure 84" L x 24" W
- Lift to a maximum height of 30" and lowers to a minimum height of 7"
- Power is 90-100 psi
- Ramp measures 30" L
- Weigh 330 lb.
- Made in U.S.A.
- Cycle Vise, front, side and rear extensions and lift dolly also available; sold separately

NOTE: This is drop ship product; no returns.



4110-0094



4110-0087

4110-0089

PART #	DESCRIPTION	SUG. RETAIL
S.A.M. 1000 AIR LIFT		
4110-0094	Gray	\$1,132.95
4110-0095	Orange	1,219.95
4110-0096	Red	1,219.95
4110-0097	Black	1,219.95
ACCESSORIES		
4110-0087	Cycle vise	152.95
4110-0088	13" Front extension	116.95
4110-0089	13" Rear extension	116.95
4110-0098	12" Side extensions	289.95
4110-0093	Ramp end extension	56.95
4120-0034	Lift dolly	65.95



B.O.B. 1500 AIR LIFT

- The B.O.B 1500 Air Lift solves numerous challenges in today's professional workshop
 - The lift raises to a maximum height of 40" and lowers to a minimum height of 10"
 - Lifts a maximum weight of 1,500 lb. for the fully-dressed motorcycles, trikes and quads
 - Includes a dropout for convenient tire changes
 - Air source is 90-100 psi.
 - Measures 7' L x 28"
 - Ramp measures 40"
 - Weighs 560 lb.
 - Cycle Vise sold separately
 - 12" side extensions and 13" front extensions or a trike extension for space also available; sold separately
- NOTE: This is drop ship product; no returns.**



PART #	DESCRIPTION	SUG. RETAIL
B.O.B. 1500 AIR LIFTS		
4110-0104	Gray	\$1,640.95
4110-0105	Orange	1,742.95
4110-0106	Red	1,742.95
4110-0107	Black	1,742.95
ACCESSORIES		
4110-0087	Cycle Vise	152.95
4110-0109	13" Front extension	143.95
4110-0108	12" Side extensions	399.95

S.A.M. 2 1000 AIR LIFT

- Developed for bike professionals who need a longer and wider work surface with the convenience of double drop panels for easy maintenance
 - Work surface measures 93" L and 28" W; drop panels measure 15" L and 28" W
 - Elevates to a maximum height of 35" and lowers to a minimum height of 7½"
 - Contains an extended ramp of 40" L for lower-built bikes
 - Air source is 90-120 psi
 - Attach the Cycle Vise to the front drop leaf or position it back on the table for rear wheel maintenance; sold separately
- NOTE: This is drop ship product; no returns.**



PART #	DESCRIPTION	SUG. RETAIL
S.A.M. 1000 2 AIR LIFTS		
4110-0099	Gray	\$1,306.95
4110-0100	Orange	1,403.95
4110-0101	Red	1,403.95
4110-0102	Black	1,403.95
ACCESSORIES		
4110-0087	Cycle Vise	\$152.95

HANDY 1000 LIFTS

- Ideal for working on motorcycles, ATVs, snowmobiles, garden tractors and other large vehicles
 - Lifting capacity of 1000 lbs.
 - Deck measures 80" x 24"; ramp measures 30"
 - Max height of 30" and a minimum height of 7"
 - Convenient foot valve allows easy up/down with intermediate stops
 - Air lift power is 90-100 psi, electric power is 115V, 60 hz
 - Air lift power is 90-100 psi, electric power is 115V, 60 hz
 - Air lift weighs 304 lb., electric lift weighs 311 lb.
 - Cycle Vise, front, side and rear extensions and lift dolly also available; sold separately
 - Made in the U.S.A.
- NOTE: This is drop ship product; no returns.**



PART #	DESCRIPTION	SUG. RETAIL
AIR LIFTS		
4110-0082	Gray	\$966.95
4110-0083	Orange	1,046.95
4110-0084	Red	1,046.95
4110-0085	Black	1,046.95
ELECTRIC LIFT		
4110-0086	Gray	1,262.95

PART #	DESCRIPTION	SUG. RETAIL
ACCESSORIES		
4110-0087	17 Cycle vise	\$152.95
4110-0088	13" Front extension	116.95
4110-0089	13" Rear extension	116.95
4110-0090	12" Side extensions	273.95
4110-0093	Ramp end extension	56.95

PowerSports
AUDIO

**HI PERFORMANCE STEREO/
SPEAKER KIT**

- Kit features an HD1BT stereo and 5 1/4" high performance 2-way speakers
- Uses the factory wiring connectors for a true plug-n-play installation
- Works with factory handlebar controls, or the optional wired remote (PART #4401-0170)
- Waterproof unit face (XPX6) and rear chassis (IPX5)
- Compatible with OEM speakers – 2 ohm thru 8 ohm stable
- Bluetooth® streaming audio (A2DP, AVRCP) allows you to play music stored on a Bluetooth® equipped phone or MP3 player with no wires
- RCA/Aux connections make custom upgrades easy
- iPod®/iPhone® control and charging through USB (rear)
- SiriusXM™ compatible (subscription and SiriusXM adapter (PART #4401-0183) required; sold separately)
- Maximum power output: 50W x 4
- AM/FM tuner
- Weatherband with S.A.M.E weather alert
- 30 station presets (12AM, 18FM)
- Auto-store, seek tuning and RBDS
- Red backlighting
- Does not support OEM CB radio or intercom systems



PART #	DESCRIPTION	SUG. RETAIL
4401-0191	For 98-13 FLHT/FLHX/FLTR models	\$589.95

PowerSports
AUDIO

**6 1/2" HIGH-PERFORMANCE
2-WAY SPEAKERS**

- Direct plug and play replacement; an easy upgrade for smaller OEM front speakers
- 60 watt maximum power input
- 73Hz-20KHz frequency response
- Suspended tweeter
- Santoprene suspension/surround with polypropylene cone
- Hybrid magnets (90mm, 14.7 oz. Neodymium)
- Stamped steel baskets
- EVA mounting gaskets
- UV-resistant (ASTM-D4329) black grilles
- 2 1/2" mounting depth
- Include adapter rings that allow for speaker to be mounted in the 5 1/4" opening
- Sold in pairs



PART #	DESCRIPTION	SUG. RETAIL
4405-0418	For 96-13 FLHT/FLHX models	\$149.95



**ILLUMINATOR PLUG-IN
STYLE RUN, BRAKE AND
TURN SIGNAL MODULE**

- Compatible with TSM/TSSM modules and security systems
- Turns stock or custom turn signals into running lights and brake lights; still maintains turn signal function
- Increases visibility of the motorcycle from the rear
- Built-in load equalizer works with stock signals and can run the smallest custom signals, even LEDs
- Comes with easy-to-follow instructions and features plug-in connectors for hassle-free installation on select models
- Works with incandescent, halogen and 12V LED signals and markers
- Made in the U.S.A.



PART #	DESCRIPTION	SUG. RETAIL
2050-0247	For 14-16 FLTRX, FLHT and FLHR models	\$139.95



**BLACKOUT LAYDOWN
TAILLIGHT WITH TAG WINDOW**

- Laydown lens is sleeker and lower profile than stock
- Features LEDs set deep inside a black reflector to give a custom dark smoke look without affecting light output
- Uses less power draw, has quicker illumination and better visibility when compared to a stock bulb
- Includes 6 white LEDs for plate illumination
- Bottom window for tag that is below taillight



PART #	DESCRIPTION	SUG. RETAIL
2010-1270	FOR 99-16 H-D (EXCEPT V-ROD, FXSTD, 09-16 FXDB, 11-16 XL 1200C/CP and H-D equipped with Tombstone taillights)	\$149.95



7" LED ROUND HEADLIGHT

- One of the best LED headlight beam-patterns in the industry
- Hard-coated polycarbonate lens
- E-coat aluminum housing
- Metalized reflectors
- 16-gauge wire
- Encapsulated circuitry
- Two LED arrays (high/low)
- Effective lumen output is approximately 1200
- DOT compliant



PART #	DESCRIPTION	SUG. RETAIL
2001-1175	7" LED headlight	\$274.99

