

INSTALLATION INSTRUCTIONS

DRAG SPECIALTIES GAS TANKS

P/N DS-391351, DS-391352

CAUTION: Gas tank **MUST** be properly installed, sealed and pressure tested **BEFORE** painting.

ATTENTION INSTALLER (IF OTHER THAN OWNER):

Please forward this Instruction Sheet to the purchaser of this product. These instructions contain valuable information necessary to the end user.

INTRODUCTION: These instructions describe the procedure for properly installing the extended smooth-top Quick-Bob rubber-mounted gas tank on 82-03 XL models.

Review instructions carefully before beginning, as they contain important information. Please retain for future reference. Particularly important information is distinguished in these instructions by the following notation:

NOTE: A **NOTE** provides key information to make procedures easier or clearer.

CAUTION: A **CAUTION** indicates special procedures that must be followed to avoid damage to the motorcycle and/or accessories.

WARNING!: A **WARNING!** indicates special procedures that must be followed to avoid injury to a motorcycle operator or person inspecting or repairing the motorcycle.



TOOLS REQUIRED:

7/16" combination wrench
9/16" combination wrench
1/8" hex key
Flat blade screwdriver
1/2" combination wrenches
Large adjustable wrench
1/4" hex key

CAUTION: Tank should be mounted, then removed, sealed on the inside and then pressure tested before painting to prevent leaks. When mounting tank, do not stress any of the mounting tabs as this could cause failure at a later date; use washers for shims if necessary.

PROCEDURE:

Begin by placing the motorcycle on its side stand.

1) Drain fuel from existing gas tank into an approved container. Make sure you are in a well-ventilated area away from any flame or sparks. Remove the existing gas tank and retain the OEM petcock.

2) Mount front bracket (6) onto frame using bolt (7), star washers (8) and nut (9). Pass the bolt through unthreaded hole closest to the front of the bracket, then through the front frame mounting hole.

3) On 883 models only, attach horn bracket (15) to front bracket (6) using bolt (14), star washers (8) and nuts (9).

4) Attach OEM coil and coil bracket using button-head screws (13), star washers (8) and nuts (9). Coil bracket attaches to holes on front bracket that are farthest back.

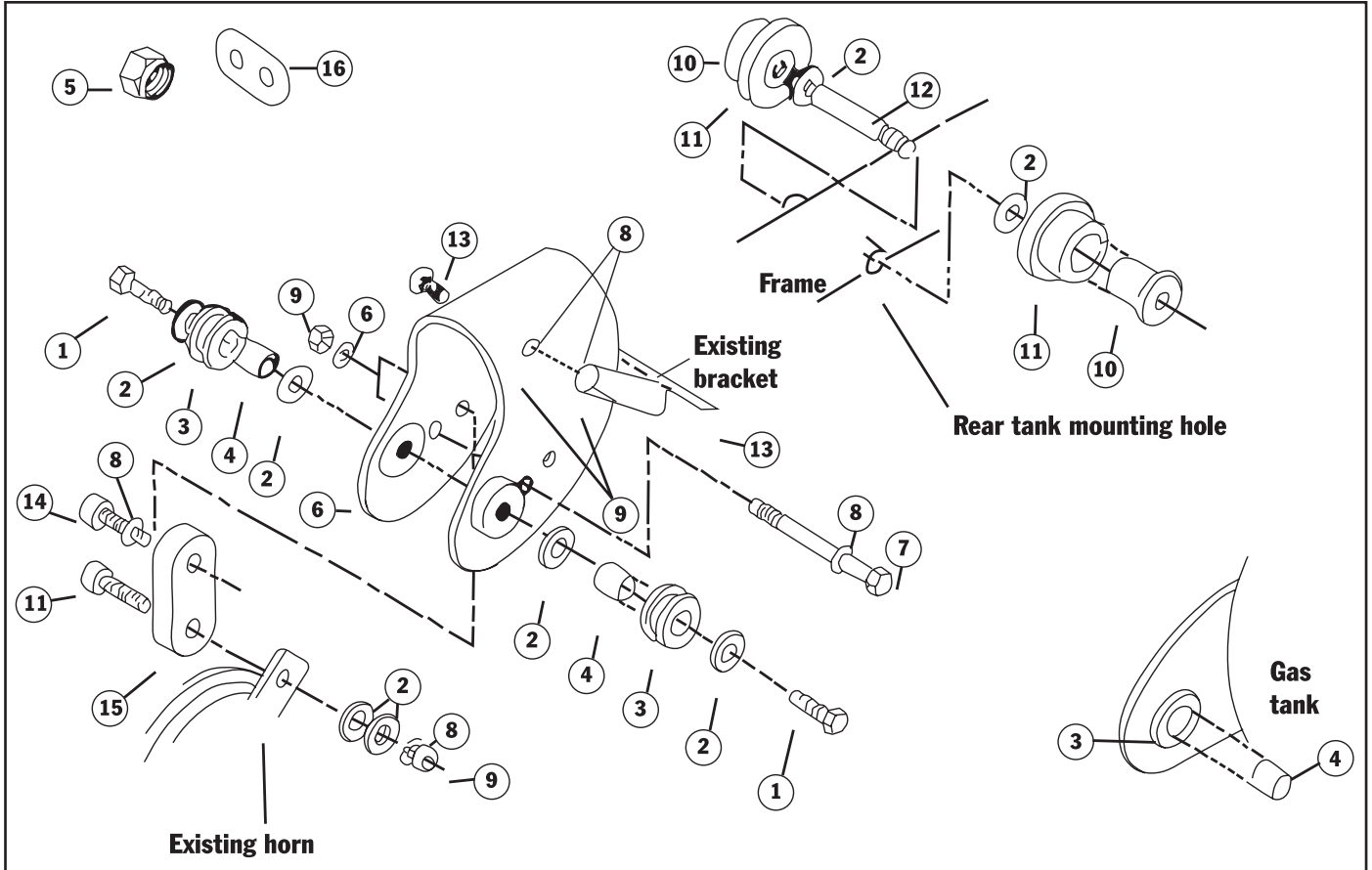
NOTE: On 95-03 models use DS-390077 ignition relocation kit to mount the coil. Also included in this kit is a black bracket to mount the ignition switch. Reroute the switch and wires back under the frame and out on the left side of the bike between the cylinders. The black bracket is attached to the stud on the rear cylinder that holds the upper motor mount. Attach the ignition switch housing to this bracket using the original button-head screws.

DRAG SPECIALTIES

3501 Kennedy Rd, PO Box 5222, Janesville, WI 53547-5222
P/N DS-391351, DS-391352

INSTALLATION INSTRUCTIONS

DRAG SPECIALTIES GAS TANKS P/N DS-391351, DS-391352



- 5) Install rubber grommets (3) into holes in front of fuel tank, then push inserts (4) into grommets.
- 6) Push shoulder inserts (10) into rubber shoulder spacers (11).
- 7) Pass double-threaded bolt (12) through rear tank mounting hole in frame tube, then assemble rubber shoulder spacers/inserts and washers (2) onto bolt. Tighten securely.
- 8) Attach petcock to tank using thread sealer and adapter (5) if necessary.

- 9) Carefully slide tank on to rear mount until front grommets align with threaded holes in front mount. Install assembly using bolts (1) and washers (2). Tighten securely.

WARNING! Check all mounts and fuel line fittings before filling with fuel. Double check all fuel lines and fittings for leaks. Check all electrical wiring to be sure it is not binding or pinched. Test drive and recheck all fuel lines and fittings for leaks.

DRAG SPECIALTIES

3501 Kennedy Rd, PO Box 5222, Janesville, WI 53547-5222
P/N DS-391351, DS-391352