

INSTALLATION INSTRUCTIONS

DRAG SPECIALTIES DRAG HEATED GRIPS P/N 0630-0425

ATTENTION INSTALLER (if other than owner):

Please forward this Instruction Sheet to the purchaser of this product. These instructions contain valuable information necessary to the end user.

INTRODUCTION: These instructions describe the procedure for properly installing the Drag Specialties Heated Grips on 82-10 models, except those with air assisted forks. Review instructions carefully before beginning, as they contain important information. Please retain for future reference.

Particularly important information is distinguished in these instructions by the following notations.

NOTE: A NOTE provides key information to make procedures easier or clearer.

CAUTION: A CAUTION indicates special procedures that must be followed to avoid damage to the motorcycle and/or accessories.

WARNING!: A WARNING indicates special procedures that must be followed to avoid injury to a motorcycle operator or person inspecting or repairing the motorcycle.

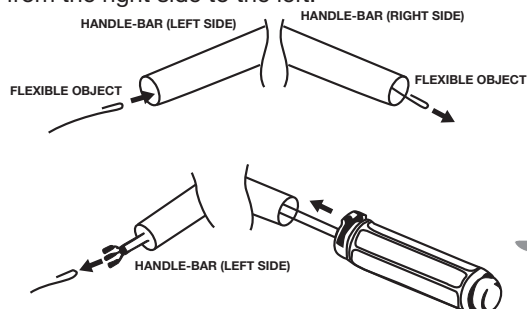


PROCEDURE:

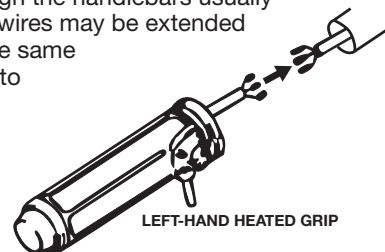
CAUTION: Installation of this heated grip kit will require that you connect the wires on the grips with the main wiring harness on the bike. If you are not comfortable doing this, please have a technician install it for you.

NOTE: On models with internal handlebar wiring you may find it difficult to route the heated grip wires from the right grip to the left grip. You may have to remove the OEM internal wires to get the heated grip wires routed through the handlebars. In these cases, using a wire lubricant (available from your local electrician) may ease the installation.

1. Disconnect the battery by removing the negative cable first.
2. Remove the left hand grip. On some later models, the grip is secured with glue and also a lip on the grip is held by the switch housing. If so, remove the two screws holding the switch housing to the handlebar and remove the left grip.
3. Loosen the adjusters on the throttle and idle cables. Screw them both completely together.
4. Remove the two screws holding the upper and lower switch housings together.
5. Remove the ferrules from the throttle and idle cables and slide the right grip off the handlebar.
6. Feed the long wires on the right grip through the handlebar from the right side to the left.



NOTE: Using a “fish” wire that is pushed through the handlebars first and then the three wires taped to the fish wire and then pulled back through the handlebars usually makes the job easier. The wires may be extended if they are too short; use the same gauge wire and make sure to solder and heat shrink all connections.



7. Connect the three wires from the right grip to the left grip using the three connectors.
8. Using adhesive glue the left grip onto the handlebar. Make sure that you orientate the switch on the grip so that it faces you when you are seated on the bike. Excess wire may simply be pushed into the handlebar.
9. Position the right grip on the handlebar, being sure to use a graphite lube between the grip and bar.
10. Reassemble both the idle and throttle cables to the grip using the original ferrules.

CAUTION: Make sure that the “shoe” for the throttle friction is in its proper place after installing the cables to the throttle grip.

11. Fasten the upper switch housing to the lower switch housing, using the original screws.
12. Remove the air cleaner so the cables can be adjusted correctly.
13. With the wheel pointing ahead, open the throttle wide open. Adjust the throttle cable until the throttle cam stop touches the boss on the carb body. Tighten the lock nut securely.

DRAG
Specialties

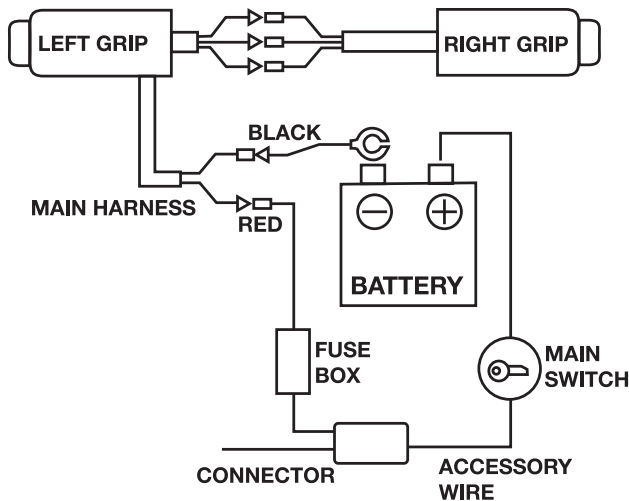
INSTALLATION INSTRUCTIONS

DRAG SPECIALTIES DRAG HEATED GRIPS P/N 0630-0425

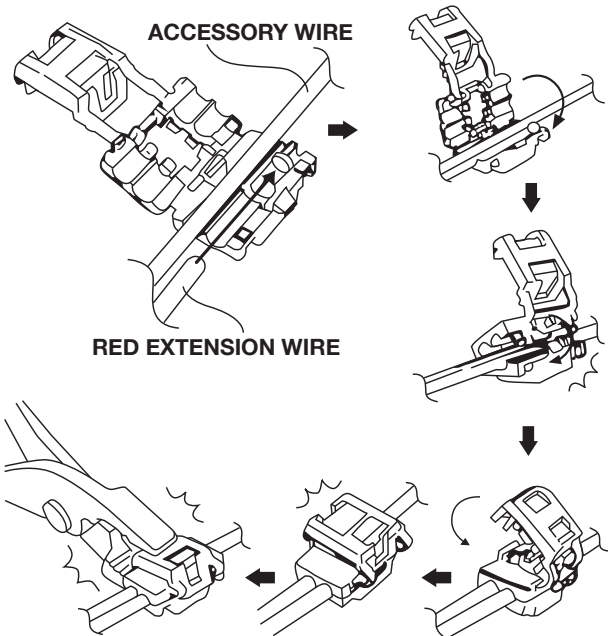
- Turn the wheel full to the right. Tighten the adjusting sleeve on the idle cable until all slack is removed from the idle and throttle cable. Twist the throttle wide open and release. The throttle should close easily by itself. If it does not, first make sure that the friction stop is completely loose, and the throttle sleeve is not binding. If the throttle still will not return easily by itself, loosen the idle cable adjuster until it will do so. Then tighten the lock nut on the idle cable adjuster.
- Determine on your motorcycle where the accessory circuit breaker or fuse is located. Some of the locations used, depending on your model, would be under the seat or side cover, in between the tanks on some split tank models or inside the front fairing.

CAUTION: Do not attach the grip heaters directly to the battery. They should be protected by either a circuit breaker or fuse. Also it is the best practice to make sure that the heaters are wired through the ignition switch so if the grip heater is left on, they will be disabled when the ignition switch is turned off. This will prevent an inadvertent running down of the battery. Wiring them through the accessory circuit will make sure the grips are shut off when the ignition switch is shut off.

WIRING DIAGRAM

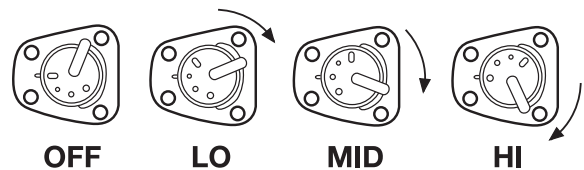


- Route the wires from the left grip along the handlebar and to the accessory wire mounting point. Make sure to leave enough slack in the wiring to accommodate turning the handlebars from full left to right. Secure the wiring with ty-wraps to prevent wear and shorting of the wires. The wires may be lengthened or shortened as required; make sure to use wires of the same diameter as those that come with the grip heaters.
- Attach the hot wire to the accessory terminal, either on the fuse block or accessory circuit breaker. The accessory circuit breaker, if used, usually has a red wire on the copper terminal and orange wires on the silver terminal. The grip heaters should be connected to the silver terminal on the accessory circuit breaker. If you have a fuse block, there should be a terminal that you can attach the wire directly to. You may have to install a fuse in the correct holder to apply current to the terminal.



- Connect the ground wire to the chassis of the motorcycle at a convenient location; make sure that the wire has good contact with bare metal on the frame.
- Make sure the grip heater switch is in the off position and the ignition switch is turned off, then reconnect the battery cables, positive cable first and negative cable last.

HOW TO CONTROL THE HEAT



- Turn on the ignition switch and check all electrical components for proper operation. Then turn on the grip heaters and allow them to warm up. Check all heat settings. Make sure that all wires are routed correctly and that no wires are overheating.
- Start the motorcycle and check for proper throttle operation. Make sure that the throttle operates correctly with the handlebars turned far left and far right. The throttle grip should self-close as soon as it is released. If it does not, readjust as required.
- Reinstall all other covers and components before test riding the bike. Use extreme caution until you have determined that the throttle control operates correctly under all conditions.

WARNING: Before operating motorcycle, be sure all hardware is tight.

ELECTRICAL CONSUMPTION

	LOW	MID	HIGH
WATTAGE [W]	15.5	23.3	34.4
AMPERE [A]	15.5	23.3	34.4

