

INSTALLATION INSTRUCTIONS

DRAG SPECIALTIES SWITCH CAP KIT P/N 0610-0807

ATTENTION INSTALLER (if other than owner): Please forward this Instruction Sheet to the purchaser of this product. These instructions contain valuable information necessary to the end user.

INTRODUCTION: These instructions describe the procedure for properly installing the replacement handlebar switch caps on 2014-15 Touring models.

Review these instructions carefully before beginning, as they contain important information. Please retain for future reference.

Particularly important information is distinguished in these instructions by the following notations:

NOTE: A NOTE provides key information to make procedures easier or clearer.

CAUTION: A CAUTION indicates special procedures that must be followed to avoid damage to the motorcycle and/or accessories.

WARNING!: A WARNING indicates special procedures that must be followed to avoid injury to a motorcycle operator or person inspecting or repairing the motorcycle.

PROCEDURE:

NOTE: The handlebar switches are modular and serviced as assemblies only, including the clutch interlock switch and front brake lamp switch. Several switch configurations are used on Touring models. The service procedures are the same for all. Switch assemblies are different between cable clutch and hydraulic clutch models. Install the correct switch module assembly. Installation of the incorrect switch will allow the engine to start in-gear with the clutch engaged.

REMOVAL OF HANDLEBAR CONTROLS:

1. See **Figure 1**. Remove the screws (3) and clamp (4). Remove the hand control assembly.

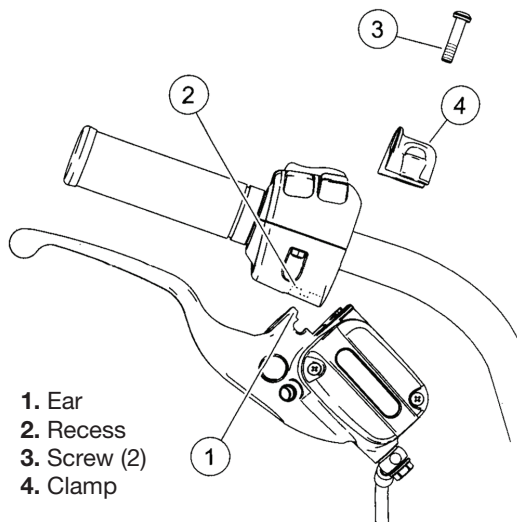


Figure 1 Hand Control Assembly

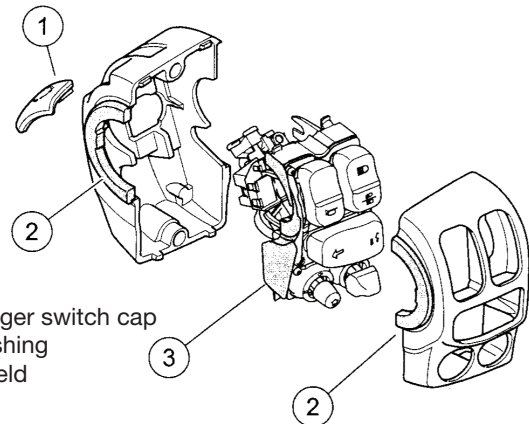


Figure 2 Switch Pack: Left Side Down

2. Left switch module:

- See **Figure 2**. With a small screwdriver, carefully pry between the trigger finger switch cap and switch plunger.
- Slide trigger finger switch cap outboard to remove.

NOTE: See **Figure 3**. The switch housing screws (5) are captive.

3. Loosen the switch housing screws (5). Remove the switch housings.

NOTE: See **Figures 3 and 4**. The latches on the connectors are fragile. Use care when disconnecting.

4. Remove connectors:

- Using a pick, carefully press the latch down.
- Use a prying motion on latch while pulling on the connector to remove.

5. See **Figure 3**. Release the switch latch (2) and rotate switch (1) down.

6. Remove the module assembly from the handlebar. Release wires from the switch pack.

7. Right switch module: Duplicate operations 3 through 6 above to remove the right switch module.



INSTALLATION INSTRUCTIONS

DRAG SPECIALTIES SWITCH CAP KIT P/N 0610-0807

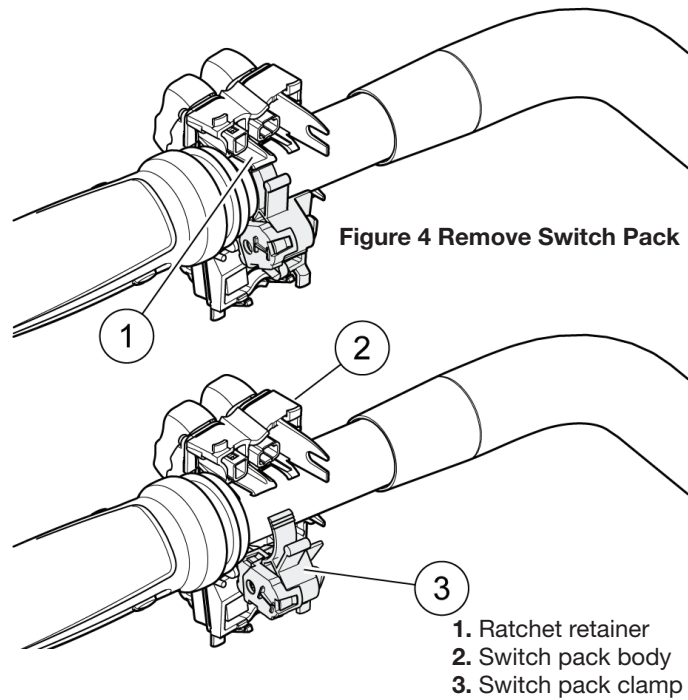
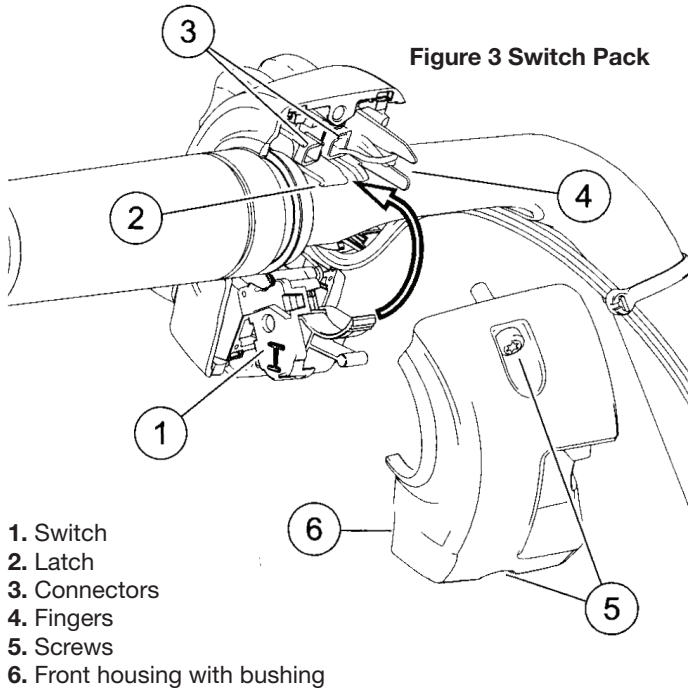
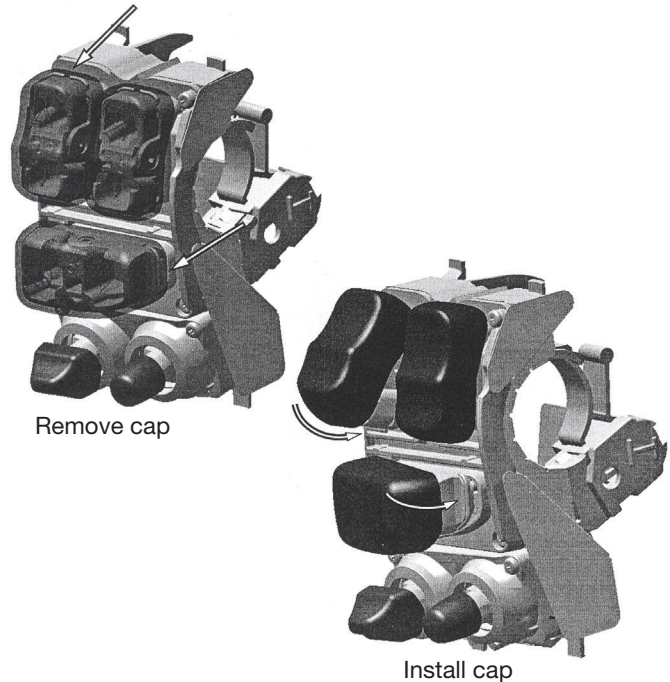


Figure 5 Replace Switch Caps



REMOVAL AND INSTALLATION OF SWITCH CAPS

NOTE: See the last page for a layout of where the switch caps are to be installed. Models without the premium radio should use the turn signal buttons without the voice recognition and information icons on them.

1. Remove the switch cap:
 - a. Rocker switch caps: See **Figure 5**. Entering from the end, carefully pry between the switch cap and switch plunger with a thin screwdriver. Remove the switch cap.
 - b. Toggle and joystick caps: Grasp with a pliers and pull straight off. Removal will destroy the cap.
2. Install the new cap:
 - a. Rocker switch caps: See **Figure 5**. Hook the new cap on one end and rotate into place; an audible snap will be heard when securely installed.
 - b. Toggle and joystick caps: Push straight on with fingers.

INSTALLATION OF HANDLEBARS CONTROLS:

Handlebar switch housing screws = 35-45 in.-lbs.

Brake lever clamp screws = 72-108 in.-lbs.

Clutch lever bracket clamp screws = 72-108 in.-lbs.

Handlebar switch housing screws = 35-45 in.-lbs.



INSTALLATION INSTRUCTIONS

DRAG SPECIALTIES SWITCH CAP KIT P/N 0610-0807

RIGHT HANDLEBAR CONTROLS:

1. Install the throttle hand grip:
 - a. Verify that TBW is installed and fully-engaged in the slots in the handlebar.
 - b. Position hand grip with cosmetic features properly positioned. Install the hand grip on the handlebar and fully-engage on TBW splines until it bottoms.
 - c. Heated hand grips: Mate connector if removed earlier.

NOTE: Verify that the hand control housing bushings and switch pack metal shield are in place. If the shield or either bushing is missing, the switches could fail. The brake light and signal light functionality could be interrupted.

NOTE: See **Figure 2**. Bushings (2) must be in place to provide proper switch function. If the bushings are missing or damaged, replace the switch housing.

2. See **Figure 2**. Verify that bushings (2) are in place on both switch housings.
3. See **Figure 3**. Mate the electrical connectors (3). Route the harness through the fingers (4) and into the channel in the switch module.

NOTE: See **Figure 2**. Shield (3) must be in place to provide proper switch function. If the shield becomes loose during disassembly or assembly, hold the shield in place while installing the switch pack and inner switch housing. Replace the switch pack if the shield is missing or deformed.

4. See **Figure 3**. Place the module on the handlebar. Rotate the switch (1) up and snap the latch (2) into place.
5. Verify that the wire harness is in the recess at bottom of the handlebar.
6. Install the switch housings. Tighten the screws (5) until snug.
7. See **Figure 1**. Install the brake control assembly. Position for rider comfort.
 - a. Engage the ear (1) in recess (2).
 - b. Rotate into position.
 - c. Install the clamp (4) and screws (3).
8. Tighten the switch housing:
 - a. Push the hand grip inboard to verify that hand grip is fully seated.
 - b. Move the switch housing assembly inboard (away from the grip) to remove all end play. Then move the switch housing outboard 0.040-0.080" in to introduce end play.
 - c. While holding the switch housing in place, tighten switch housing screws to 35-45 in.-lbs.
 - d. Verify that the hand grip has slight inboard-outboard free play.
 - e. Verify that the hand grip rotates and returns freely.
9. Tighten the brake control clamp screws (3) to 72-108 in.-lbs. Again, verify the hand grip rotation and slight end play.

NOTE: Be sure that all lights and switches operate properly before operating the motorcycle.

10. Test switches for proper operation.

LEFT HANDLEBAR CONTROLS:

NOTE: Never install a switch from a different model. Although they are similar and will physically install, certain features are different and will cause the clutch interlock to not operate properly.

1. Install the new hand grip, if removed.

NOTE: Verify that the hand control housing bushings and switch pack metal shield are in place. If the shield or either bushing is missing, the switches could fail. Brake light and signal light functionality could be interrupted.

NOTE: See **Figure 2**. The bushings (2) must be in place to provide proper switch function. If bushings are missing or damaged, replace the switch housing.

2. See **Figure 2**. Verify that the bushings (2) are in place on both switch housings.
3. See **Figure 3**. Mate the electrical connectors (3). Route harness through fingers (4) and into the channel in the switch pack.

NOTE: See **Figure 2**. The shield (3) must be in place to provide proper switch function. If the shield becomes loose during disassembly or assembly, hold the shield in place while installing the switch pack and inner switch housing. Replace the switch pack if the shield is missing or deformed.

4. See **Figure 3**. Place the module on the handlebar. Rotate the switch (1) up and snap the latch (2) into place.
 5. Verify that the wire harness is in the recess at the bottom of the handlebar.
 6. Install the switch housings. Tighten the screws (5) until snug.
 7. See **Figure 1**. Install the clutch control assembly. Position for rider comfort.
 - a. Engage the ear (1) in recess (2).
 - b. Rotate into position.
 - c. Install the clamp (4) and screws (3).
 8. Position the control for rider comfort. Tighten to 72-108 in.-lbs.
 9. Tighten the switch housings screw to 35-45 in.-lbs.
 10. See **Figure 2**. Slide the trigger finger switch cap (1) until it clicks into place.
- NOTE:** Be sure that all of the lights and switches operate properly before operating the motorcycle.
11. Test the switches for proper operation.
- NOTE:** The left hand control switch pack controls the clutch interlock. A motorcycle with the wrong switch pack installed can start in gear, causing loss of control, which could result in serious injury or death. Verify the clutch interlock function whenever the switch pack is replaced.



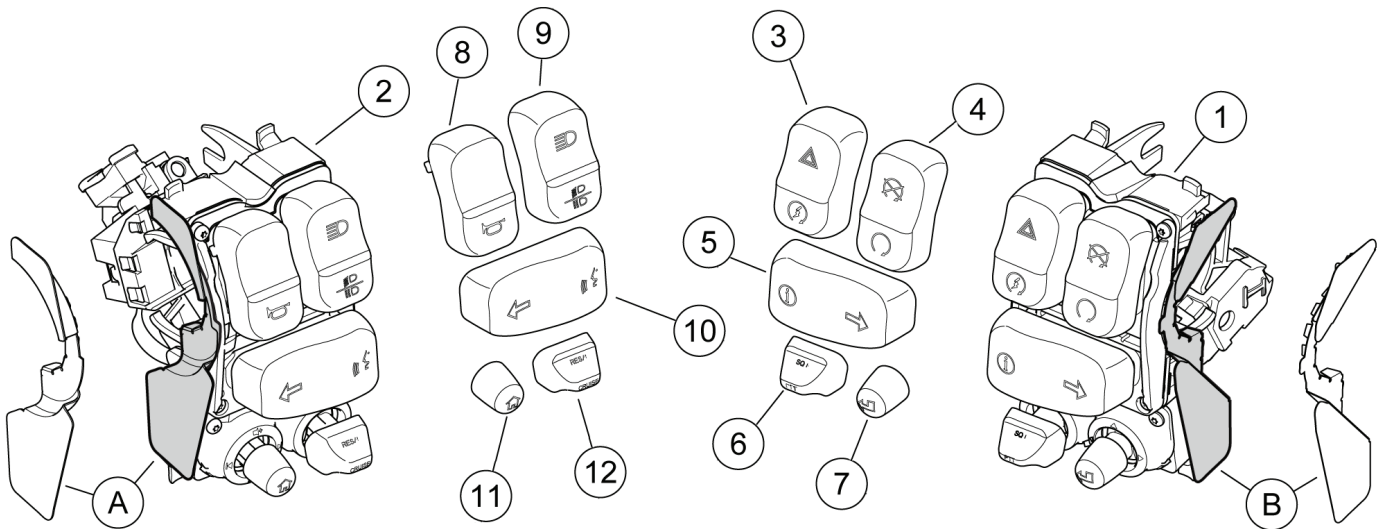
INSTALLATION INSTRUCTIONS

DRAG SPECIALTIES SWITCH CAP KIT P/N 0610-0807

12. Verify the clutch interlock operation. Perform the following steps in order. Do not skip any steps. If any test fails, stop and diagnose the condition before proceeding.
 - a. Remove the spark plug cables from spark plugs.
 - b. Straddle the vehicle. Press and hold the rear brake pedal.
 - c. Turn the ignition switch ON. Turn the run/stop switch to RUN.
 - d. Shift into neutral and release the clutch lever. Briefly push the start switch. The starter should operate.

- e. Shift into the highest gear. Pull in the clutch lever and briefly press the start switch. The starter should operate.
- f. With the clutch lever released and the transmission in gear, briefly press the start switch. The starter should not operate.
- g. Turn off the ignition and run/stop switches.
- h. Install the spark plug cables.

WARNING!: Before operating the motorcycle, be sure all hardware is tight.



Item	Description
1	Switch pack, right side, (not included in kit)
2	Switch pack, left side, (not included in kit)
3	• Key cap, vertical, with "start" and "hazard" icons
4	• Key cap, vertical, with "run" and "stop" icons
5	• Key cap, horizontal, with "right turn" and information "I" icons
6	• Key cap, three-way, CB, with "PTT", "SQ+", "SQ-" labels
7	• Button cap, five-way (joystick), with "selection arrow" icon
8	• Key cap, vertical, with "horn" icon
9	• Key cap, vertical, with headlamp "high", "low", "flash to pass" icons
10	• Key cap, horizontal, with "left turn" and "voice recognition" icons
11	• Button cap, five-way (joystick), with "home" icon
12	• Key cap, three-way, with "CRUISE", "RES/+", "SET/-" labels

Item	Description
The following components are not included in kit.	
A	Shield, left. (Comes assembled to switch pack. Also shown exploded away for identification.)
B	Shield, right. (Comes assembled to switch pack. Also shown exploded away for identification.)

