

Winch Mount

YAMAHA

'07-'10 700 Grizzly, '09 550 Grizzly

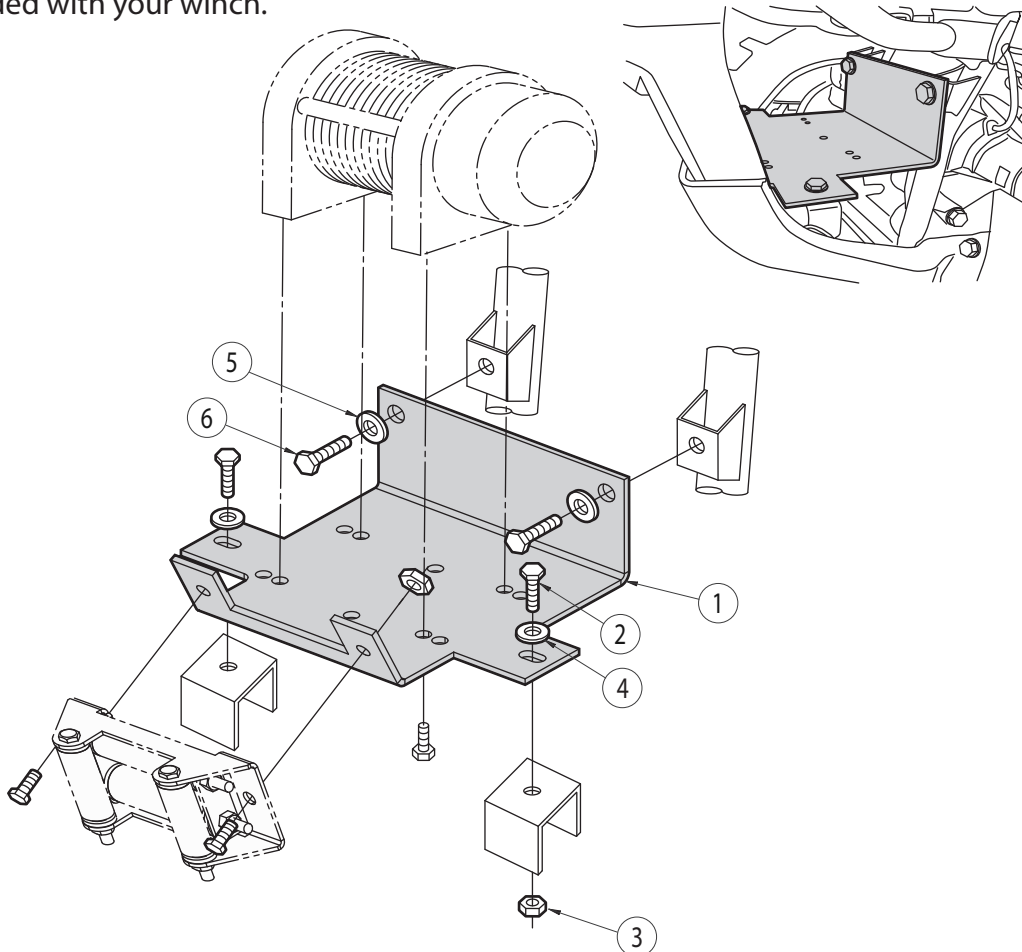
PN: 1547M (4505-0375)



Item	Qty.	Part#	Description
1	1	1547-1	Winch Mount Plate
2	2	HDW2050	5/16" x 3/4" Hex Head Bolts
3	2	HDW7058	5/16" Nylock Nuts
4	2	HDW9002	5/16" Flat Washers
5	2	HDW9009	7/16" Lock Washers
6	2	HDW1066	10mm x 20mm Hex Head Bolts

NOTE: Roller fairlead not included with this kit!

1. Position the Winch Mount (1) into the front of the machine as illustrated.
2. Place the two 10mm x 20mm Hex Head Bolts (6) and the two 7/16" Lock Washers (5) into the top holes as illustrated and tighten.
3. Insert two 5/16" x 3/4" Hex Head Bolts (2) and two 5/16" Flat Washers (4) into the bottom holes as illustrated and tighten using two 5/16" Nylock Nuts (3).
4. Attach the Roller Fairlead as illustrated using two 5/16" x 3/4" Hex Head Bolts and two 5/16" Nylock Nuts.
5. Orientate the winch so the cable pulls off the bottom of the drum. Bolt the winch to the plate with the hardware provided with your winch.



FOR QUESTIONS OR COMMENTS PLEASE CALL THE MANUFACTURER: **763-689-4800**

All images used are copyrighted property of CMP and may not be used without permission.

Inst1547M 08/28/07