



## Winch Mount Installation Instructions

Honda '03-'05 TRX 650FA Rincon, '06-'10 TRX 680 Rincon

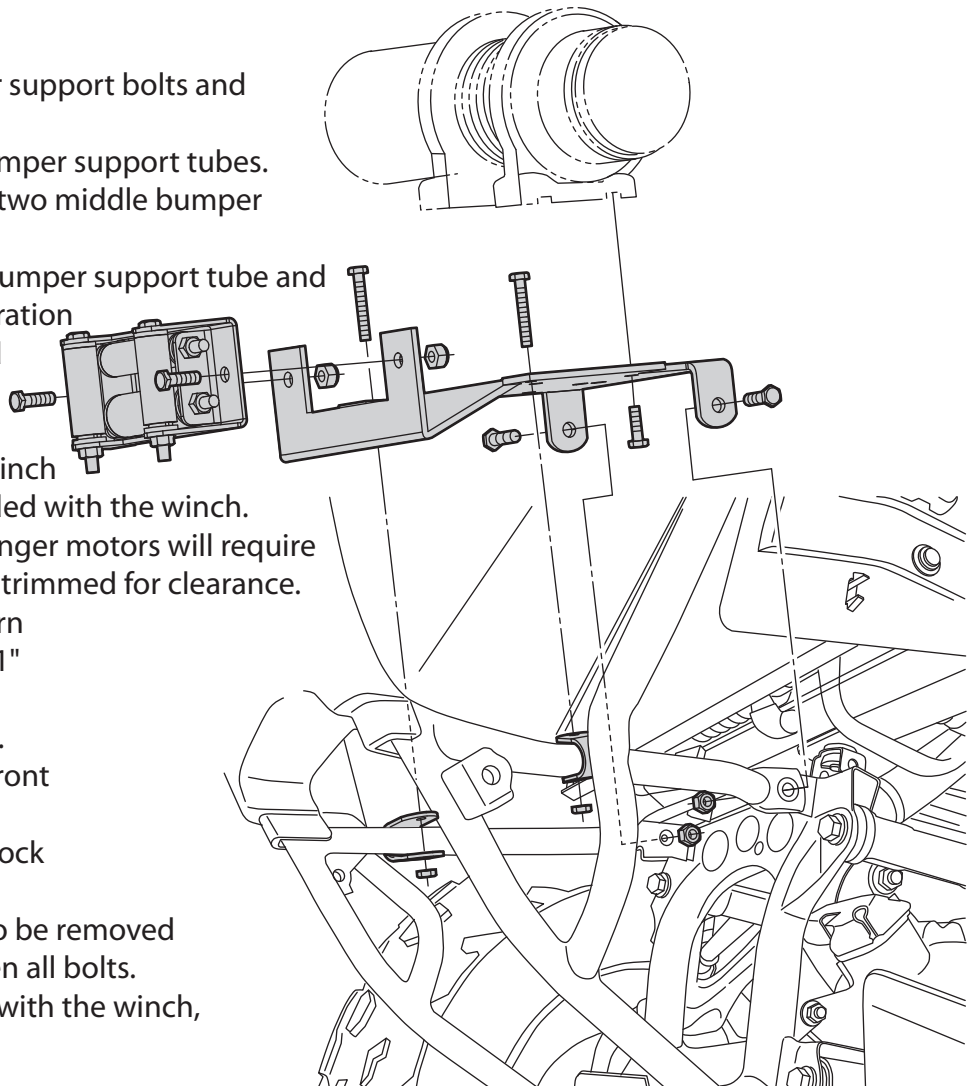
Part Number: 1524M (4505-0363)

Qty.	Part #	Description
1	1524-1	Winch Mount
2	HDW2004	1/4" x 1-3/4" Hex Bolts
2	HDW2050	5/16" x 3/4" Hex Bolts
2	HDW7050	1/4" Nylock Nuts
3	HDW7058	5/16" Nylock Nuts
1	HDW2072	5/16" x 1" Button Head Bolt
2	KD20P	3/4" U-Clamps

**NOTE: Roller fairlead not included with this kit!**

### INSTRUCTIONS:

1. Remove skid plate.
2. Remove the two middle bumper support bolts and retain for later use.
3. Place winch mount on top of bumper support tubes.
4. Attach back of mount using the two middle bumper support bolts.
5. Place u-clamps around middle bumper support tube and attach to winch mount per illustration using two 1/4" x 1-3/4" bolts and 1/4" Nylock nuts.
6. Tighten all bolts.
7. Attach winch to the top of the winch mount with the hardware provided with the winch.  
**Note:** Some winches with the longer motors will require the plastic radiator shroud to be trimmed for clearance.
8. When installing a two bolt pattern winch, use the provided 5/16" x 1" button head bolt in the front (closest to the fairlead) bolt hole.
9. Attach the roller fairlead to the front of the mount using two 5/16" x 3/4" hex bolts and two 5/16" Nylock nuts. (Rollers should turn freely.)  
**Note:** Bottom roller may need to be removed to run wire rope through. Tighten all bolts.
10. Using the instructions provided with the winch, wire accordingly.



FOR QUESTIONS OR COMMENTS PLEASE CALL THE MANUFACTURER: **763-689-4800**