

# Winch Mount

## CAN AM

'06-'08 800 Outlander, '06-'08 800 Outlander Max,  
'06-'08 650 Outlander, '06-'08 650 Outlander Max,  
'07-'08 500 Outlander, '07-'08 500 Outlander Max

**PART# 4505-0325**

Fig. A - Upper A-arm mounting bolt position.  
Loosen bolt A to access bolt 7.

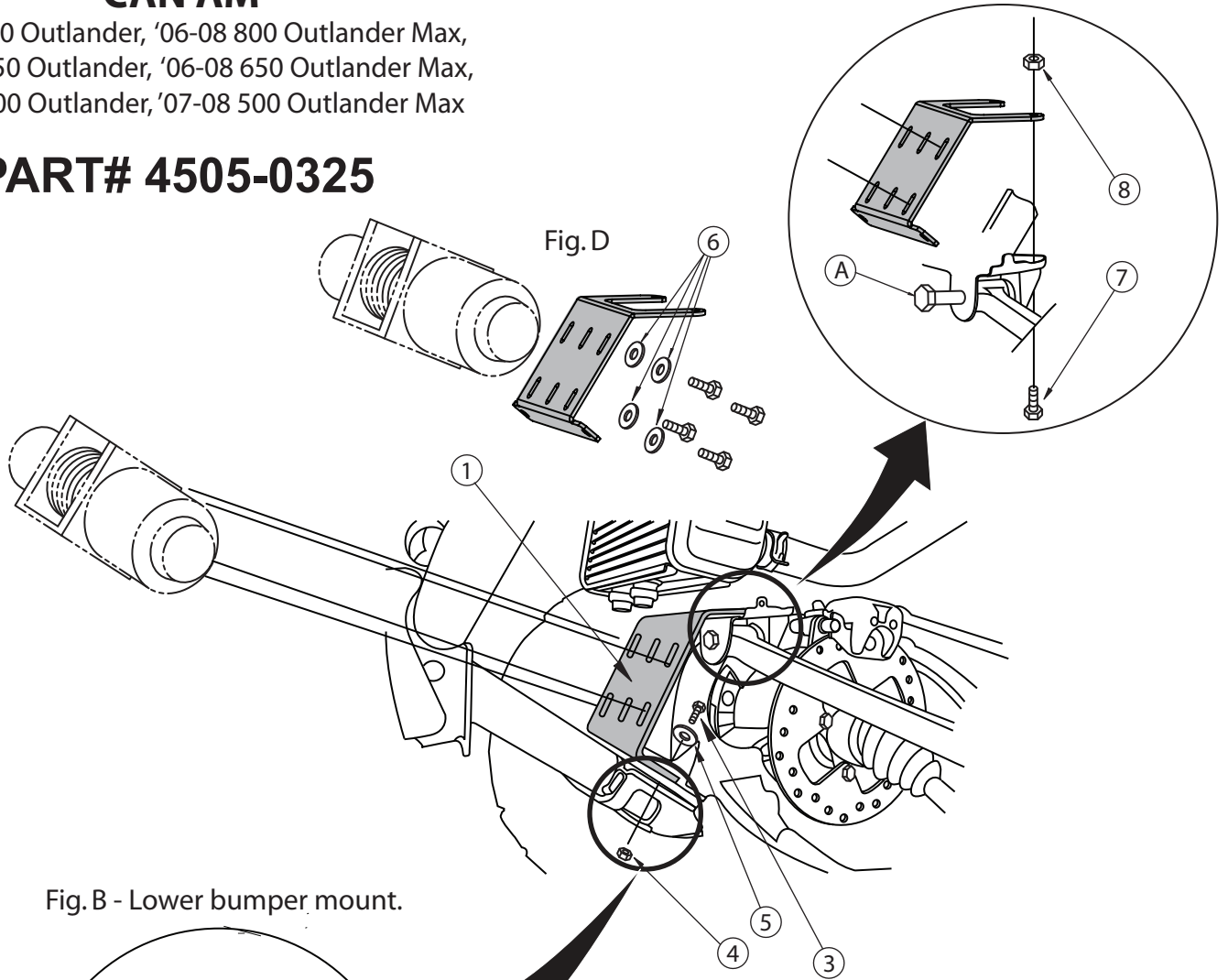


Fig. B - Lower bumper mount.

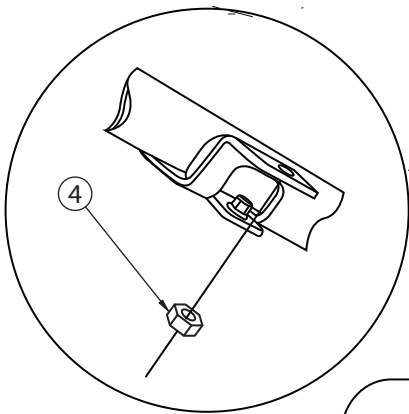
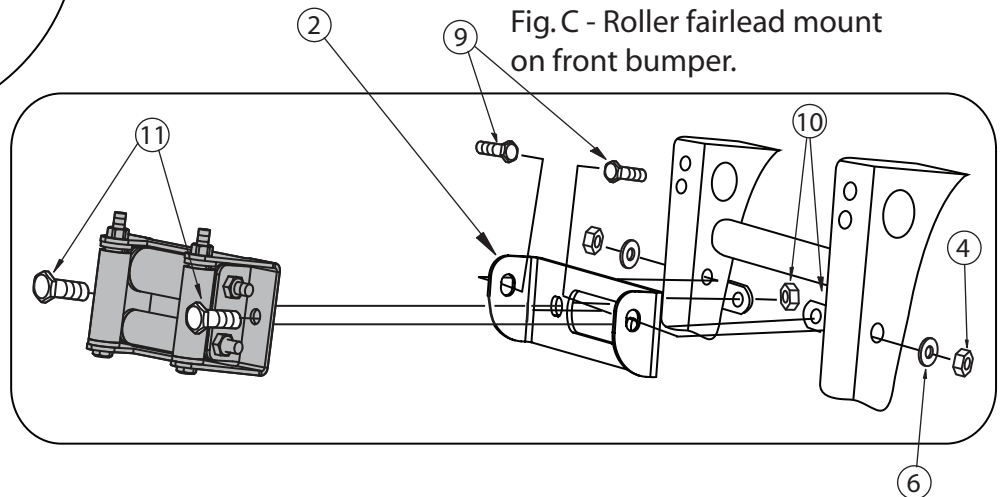


Fig. C - Roller fairlead mount  
on front bumper.





## Winch Mount CAN AM

'06-'08 800 Outlander, '06-08 800 Outlander Max,  
'06-'08 650 Outlander, '06-08 650 Outlander Max,  
'07-08 500 Outlander, '07-08 500 Outlander Max

**PART# 1517M (4505-0359)**

Ref.	Qty.	Part #	Description
1	1	1517-1	Winch Mount Plate
2	1	1517-2	Roller Fairlead Mount Plate
3	2	HDW2051	5/16" x 1" Hex Bolts
4	4	HDW7058	5/16" Nylock Nuts
5	2	HDW9002	5/16" Flat Washers
6	6	HDW9003	5/16" USS Flat Washers
7	2	HDW1054	8mm x 25mm Hex Bolts
8	2	HDW1041	8mm Nylock Nuts
9	2	HDW9035	5/16" x 2.5" Hex Bolt
10	2	HDW7061	3/8" Nylock Nuts
11	2	HDW2102	3/8" x 1 1/4" Hex Bolts

### INSTRUCTIONS:

1. Remove front brushguard (on XT Models) and plastic bumper cover. Remove plastic radiator air deflector and side deflectors.
2. Remove the lower bumper mounting bolts. Loosen most of the way but keep in place the front mounting bolt of each upper a-arm (Fig. A). This bolt is horizontally positioned and will give you access to removing the vertical front a-arm mount bolts located behind them. Remove the vertical bolt and nuts completely. See illustration.
3. Grab bumper and carefully pull outward to allow room for the main winch mount plate to be slid into place. Make sure the radiator sets back down into the proper position. **NOTE:** Two bolt pattern winches (most 1500#-2000#) will need to be mounted to the plate before installing. Four bolt pattern winches can be bolted in after mount plate is installed.
4. Install two 8mm x 25mm bolts (#7) vertically from the bottom of the front a-arm mount holes and through the tabs of the winch mount plate. Secure with two 8mm (#8) nylock nuts (Fig. A).
5. Reinstall the stock lower bumper mount bolts (Fig. B). Using two 5/16" x 1" bolts (#3), 5/16" flat washers (#5), and 5/16" lock nuts (#4), bolt the lower portion of the main winch mount plate to the front bumper through the existing holes.
6. You can now tighten the horizontal front a-arm mount bolts (A) that you had previously loosened (Ref. A).
7. All four bolt pattern winches can now be bolted to the plate with the bolts included with the winch. Use the included 5/16" USS flat washers (#6) under each bolt (Fig. D). Make sure to position it so the cable spools off the bottom of the drum.
8. Align the fairlead plate over the two aluminum tabs in the front bumper and bolt in place using the two 5/16" x 2.5" bolts (#9), two 5/16 lock nuts (#4), and two 5/16 USS Flat washers (#6). See Fig. C.
8. Reinstall bumper cover except for the two bottom skid pan bolts, you will need to keep these free to access the roller fairlead bolts. Reinstall the radiator air deflectors.
9. Attach your roller fairlead to the front of the bumper cover and through the roller fairlead mount using two 3/8" x 1 1/4" hex head bolts (#11) and 3/8" nylock nuts (#10). The removed lower skid pan bolts should allow you access to tighten the nuts. Reinstall the lower skid pan bolts after the roller fairlead is bolted in place. **Note:** Bottom roller may need to be removed to run wire rope through.

## SEE BACK FOR INSTALLATION IMAGES

FOR QUESTIONS OR COMMENTS PLEASE CALL THE MANUFACTURER: **763-689-4800**