



Ref#.	Qty.	Part #	Description
1	1	1516-1	Main Winch Mount Plate
2	2	HDW9003	5/16 USS Washers
3	2	HDW2050	5/16" X 3/4" Hex Bolts
4	2	HDW7058	5/16" Nylock Nuts

NOTE: THIS KIT DOES NOT INCLUDE A ROLLER FAIRLEAD.

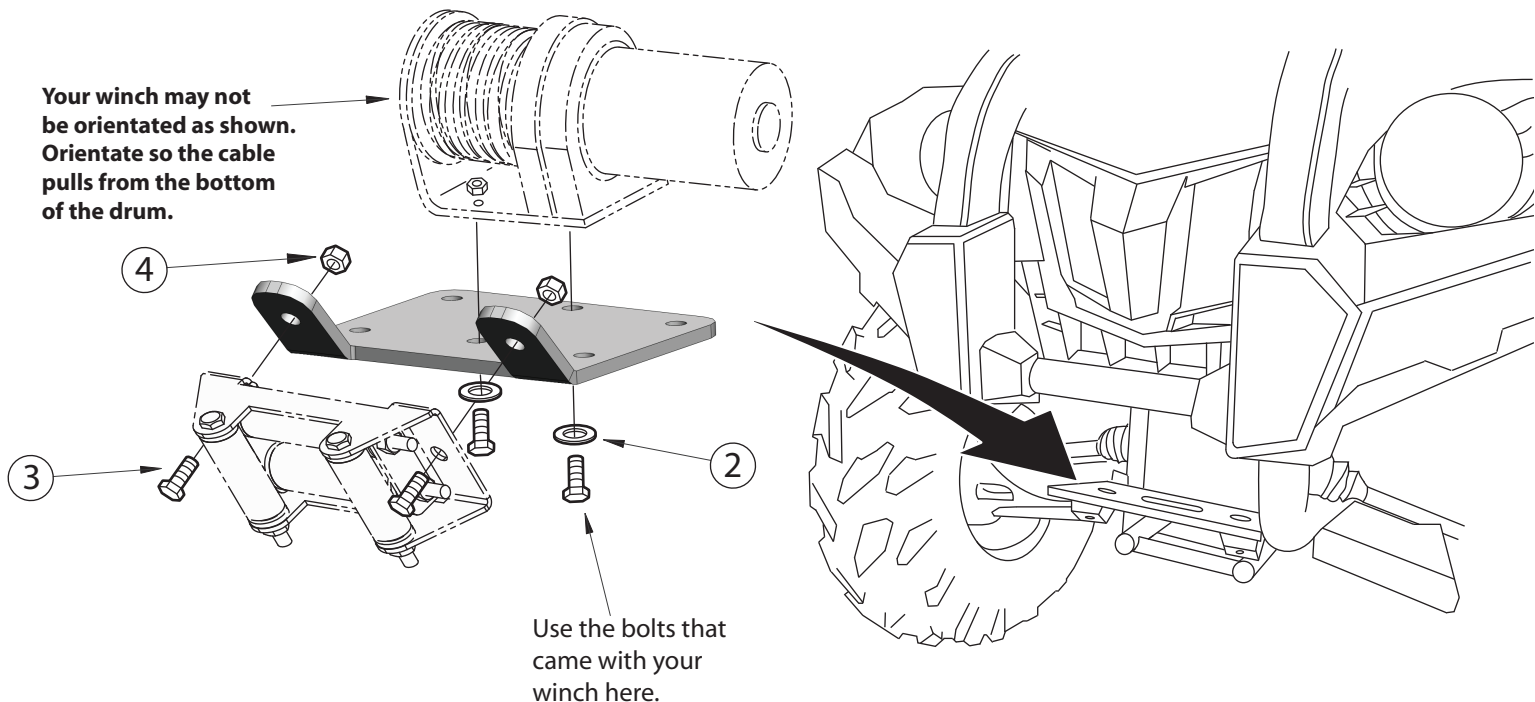
Winch Mount Installation Instructions

2009-10 Yamaha Grizzly 450

Part Number: 1516M (4505-0358)

INSTRUCTIONS:

1. Remove the two front and two bottom skidplate bolts. This will allow the skidplate to hang down out of the way while you install the winch.
2. Slide your winch through the front of the bumper and onto the stock metal bumper plate. Orientate your winch so the cable pulls off the bottom of the drum. Slide the winch mount plate underneath your winch but on top of the stock bumper plate.
3. On 4 bolt pattern winches, line up the four holes in the stock bumper plate, winch mount plate, and winch. Bolt into place using the bolts supplied with your winch.
4. On 2 bolt pattern winches, line up the winch mount plate and winch through the two larger holes running through the center of the stock bumper plate. Bolt into place using the bolts supplied with your winch, and the 5/16" USS washers supplied in this kit.
5. Pull some cable out of the winch and through your roller fairlead then install your roller fairlead (#5) on the outside of the winch mount plate. Secure with two 5/16" x 3/4" hex bolts (#3) and 5/16" nylock nuts (#4). (rollers should turn freely).
Note: Bottom roller may need to be removed to run the wire rope through. **Note:** If using an aluminum hawse, different hardware may be required, check the hardware that came in the winch box.
6. Using the instructions provided with the winch, wire accordingly.
7. Reinstall skidplate bolts.



FOR QUESTIONS OR COMMENTS PLEASE CALL THE MANUFACTURER: **763-689-4800**