

Front Bumper Mounting Instructions

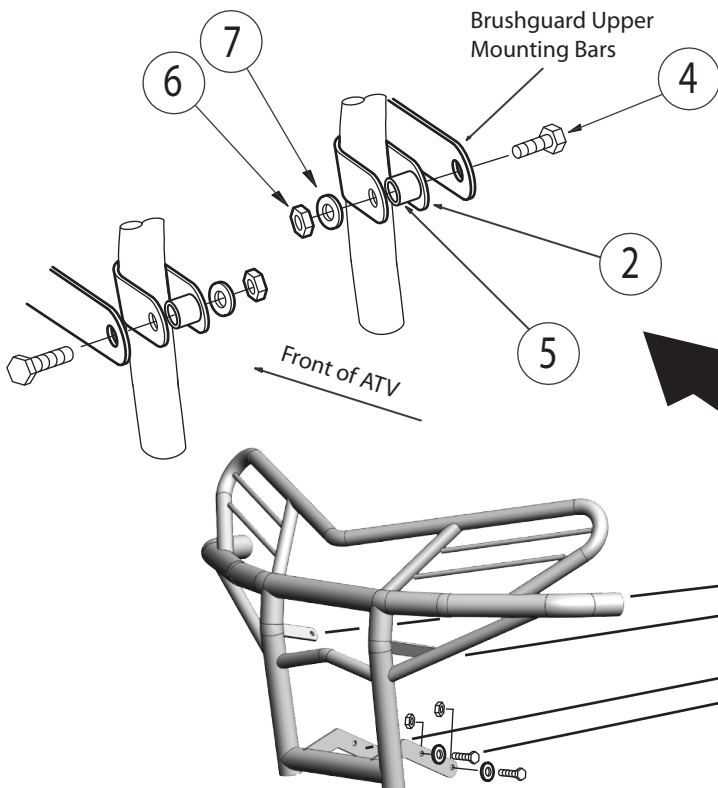
2006-09 Suzuki King Quad 450/700/750

Part Number: 2916 (0530-1008)

Ref.	Qty.	Part#	Description
1	1	2916-1	Front Bumper
2	2	KD23P	U-Clamps
3	4	HDW2051	5/16" x 1" Hex Bolts
4	2	HDW2056	5/16" x 2" Hex Bolts
5	2	PC124	Spacers
6	6	HDW7058	5/16" Nylock Nuts
7	6	HDW9002	5/16" Flat Washers
8	4	HDW9064	1 5/8" Endcaps

INSTRUCTIONS:

1. The top two brushguard mounts will slide through the triangular holes in the front plastic bumper cover and attach to u-clamps around the frame members. The lower two brushguard mounts will go in through the winch area and bolt to the tabs welded on the bottom of the lower frame members.
2. Start by sliding the brushguard into place and loosely hand install four 5/16" x 1" bolts (#3), 5/16" washers (#7), and 5/16" nylock nuts (#6) through the lower brushguard mounts and lower frame mount tabs.
3. Slide the two u-clamps (#2) over each frame tube behind the triangular openings in the front plastic bumper cover. The clamps will be positioned right at the bend of the frame tubes. The open end of the clamp should face the rear of the atv. Slide a 5/16" x 2" bolt (#4) through the upper brushguard bracket and u-clamp (with spacer (#5) inside of it). Loosely secure with a 5/16" flat washer (#7) and 5/16" nylock nut (#6). See Illustration.
4. Make sure the bumper is aligned properly with the front of the machine and tighten all nuts and bolts.
5. Using a rubber mallet, lightly tap the endcaps into place on the brushguard.



NOTE: This bumper is designed to be used as a brushguard only and should not be used to push heavy objects. Bent or damaged bumpers will not be warranted.



FOR QUESTIONS OR COMMENTS PLEASE CALL: 763-689-4800