



**ALLIANCE HELMET**

INSTRUCTION MANUAL

**ICON**

[WWW.RIDEICON.COM](http://WWW.RIDEICON.COM)

# ALLIANCE INTRODUCTION

Evolved. Refined. Perfected. Icon has never been satisfied with the status quo - which is why we created the new Icon Alliance helmet. Based on the proven Alliance SSR, this nexgen helmet is fitted with a multitude of key revisions. The first revision is the new EPS liner. We've listened to the customers requests and reshaped the EPS liner into a more oval geometry. This new headform increases rider comfort by slightly elongating the entire inner circumference. Combine this geometry with our removable Hydra-Dry™ wicking comfort liner and the the result is a nearly perfect rider focused enclosure. To further increase rider comfort we've revised the entire venting system. Much like a finely tuned motor, we've reshaped and enlarged the intake and exhaust ports for increased airflow. Additional ventilation ports have also been added to the lateral aspect of the helmet to further increase ventilation. The shield itself has been upgraded to Icon's distortion free Pro-Shield™. The Pro-Shield™ features the ProLock™ shield locking system, graphic enabled sideplates, fog-free coating, and a no-tools shield change interface. Continuing with our commitment to excellence, the Alliance is constructed with premier manufacturing processes and stringent quality assurance procedures. This, combined with rigorous testing, assures that the Alliance meets or exceeds the highest safety standards in the world (DOT,ECE,SG,SAI).

Remember: a helmet will not protect you unless you are wearing it, the helmet is fitted properly, and the helmet is securely fastened on your head.



# CONTENTS

CONSTRUCTION	3
HELMET SIZE CHART	4
PROPER FITTING	5
CHINSTRAP	6
SHIELD	7
SHIELD CHANGE & SIDE PLATE REMOVAL	8
INTERIOR	9
COMFORT LINER REMOVAL	10
SUPERVENT SYSTEM	12
CARE, CLEANING & REPLACEMENT	13
ADVISORY	14

**icon**

2



## CONSTRUCTION

The Alliance polycarbonate/ABS blend shell has been designed and developed with safety and comfort in mind. With our integrated Supervent system, dual density impact absorbent EPS liner, and fully removable interior the Alliance is built to help keep you cool, safe and focused.

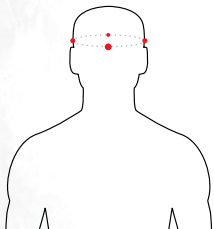
- ① SUPER VENT
- ② EYEPORT GASKET
- ③ FACE SHIELD
- ④ SIDE PLATES
- ⑤ BREATH DEFLECTOR
- ⑥ PROLOCK
- ⑦ MOUTH VENT
- ⑧ SIDE VENT
- ⑨ DOUBLE "D" RING
- ⑩ OUTER SHELL
- ⑪ REAR VENT
- ⑫ IMPACT ABSORBENT LINER
- ⑬ TOP PAD
- ⑭ COMFORT LINER
- ⑮ BASE GASKET
- ⑯ CHIN STRAP



**MAKE NO MODIFICATIONS.** To maintain the full effectiveness of this helmet, there should be no alteration to the structure of this helmet or its component parts. Paints and adhesives may damage and render your helmet ineffective, without the damage visible to the user.

# HELMET SIZING CHART

For your safety, please choose a helmet in the size which fits your head. Remember, a helmet will not do a motorcyclist any good unless it is fitted and worn properly.



HEAD MEASUREMENT

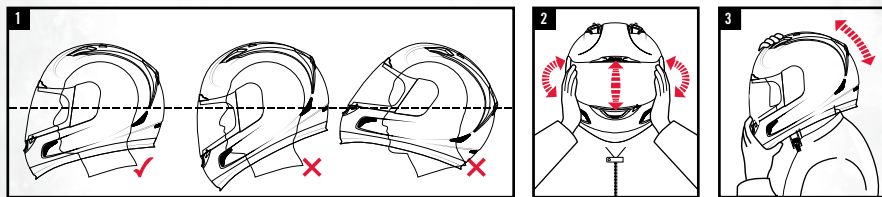
1. WRAP FLEXIBLE TAPE MEASURE APPROXIMATELY ONE INCH ABOVE EYEBROWS AND EARS
2. USE THIS MEASUREMENT TO FIND YOUR "INCHES" OR "CENTIMETERS" HEAD SIZE IN OUR HELMET SIZING CHART

## HELMET SIZING CHART

SHELL	XS	S	M	L	XL	2XL	3XL
HAT SIZE	6 <sup>5</sup> / <sub>8</sub> - 6 <sup>3</sup> / <sub>4</sub>	6 <sup>7</sup> / <sub>8</sub> - 7	7 <sup>1</sup> / <sub>8</sub> - 7 <sup>1</sup> / <sub>4</sub>	7 <sup>3</sup> / <sub>8</sub> - 7 <sup>1</sup> / <sub>2</sub>	7 <sup>5</sup> / <sub>8</sub> - 7 <sup>3</sup> / <sub>4</sub>	7 <sup>7</sup> / <sub>8</sub> - 8	8 <sup>1</sup> / <sub>8</sub> - 8 <sup>1</sup> / <sub>4</sub>
INCHES	20 <sup>7</sup> / <sub>8</sub> - 21 <sup>1</sup> / <sub>4</sub>	21 <sup>5</sup> / <sub>8</sub> - 22	22 <sup>3</sup> / <sub>8</sub> - 22 <sup>3</sup> / <sub>4</sub>	23 <sup>1</sup> / <sub>8</sub> - 23 <sup>1</sup> / <sub>2</sub>	24 - 24 <sup>3</sup> / <sub>8</sub>	24 <sup>3</sup> / <sub>4</sub> - 25 <sup>1</sup> / <sub>8</sub>	25 <sup>1</sup> / <sub>2</sub> - 26
CENTIMETERS	53-54	55-56	57-58	59-60	61-62	63-64	65-66

## PROPER FITTING

No helmet can protect the user against all foreseeable impacts. For your safety, please choose a helmet in the size which fits your head (refer to the helmet size chart on page 4). For maximum head protection, should fit properly, and the retention system must be securely fastened under the chin. To ensure a proper fit, please follow the steps below:

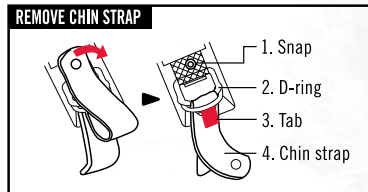
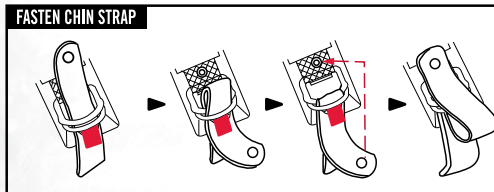


1. Position the helmet on your head so that it sits low on your forehead. If you can't see the edge of the brim at the extreme upper range of your vision, the helmet is probably out of place. Adjust the retention system so that when in use, it will hold the helmet firmly in place.
2. With the chinstrap still fastened as tightly as possible, take hold of the helmet with both hands. Without moving your head, try to move the helmet up and down, and from side to side. You should feel the skin of your head and face being pulled as you try to move the helmet. If you can move the helmet around easily, it is too big. To determine a correct fit try a smaller size.
3. Now, with the chinstrap secured, put your hands flat on the back of the helmet and try to pull the helmet off by rotating it forward. Then, put your hands on the front of the helmet, and try to push the helmet off by rotating it toward the rear. If the helmet starts to come off in either direction, the helmet is either too large, or the chinstrap is not fastened tightly enough.

## CHIN STRAP

In order for your helmet to function properly the chinstrap must always be securely fastened while in use. With the chin strap fastened, it should not be possible to remove the helmet from your head by pulling up at the center rear. Check periodically to see that the vibration has not caused the chin strap to loosen. Just give a little tug to make sure it is still tight.

To securely fasten the D-ring retention system, thread the end of the chin strap through the D-rings only as shown in the diagram below. Fasten the female snap of the chin strap to the male snap to secure the loose end of the chin strap after the chin strap is securely fastened. The only function of the snap fastener on the end of the chin strap is to keep it from flapping in the air stream. It is not part of the retention system and should not be used independently without passing through the D-rings as illustrated below.



Please make sure that the chin strap is fastened as instructed above. Failure to do so may result in fatal injury.

# ALLIANCE SHIELD

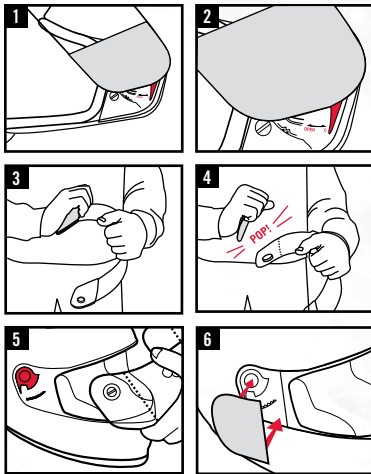
Precision optics by Icon provide you with a clear undistorted line of sight. All Icon shields include our quick change ratcheting system for easy shield changes. Icon shields are also offered in a variety of tinted styles, and meet or exceed Vehicle Safety Commission Regulations (VESC-8) and/or ECE safety regulations.





## SHIELD CHANGE REMOVAL

1. To remove the shield, open the shield completely.
2. Push both orange locking levers to the open position towards the front of the helmet and remove the shield from the gear plates.
3. Once removed, brace the shield with one hand, and use the other hand to pull the side plates from the straight, long edge (the front of the side plates).
4. Pull each side plate until they pop free from the shield.
5. To replace shield, slide the orange locking levers in open position towards the front of the helmet and align the tabs on shield with holes on the gear plates until secure. Push the orange locking levers to the closed position.
6. To replace the side plates, align tabs on side plate with holes in shield, and snap it into place. Repeat for adjacent side plate.
7. Test out the opening and closing function of your shield before riding.

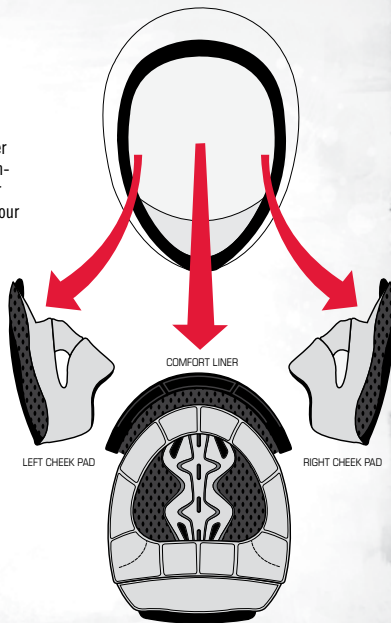


## INTERIOR

Your Alliance helmet features a fully customizable interior lined with Icon's exclusive moisture wicking material, HydraDry™.

The size of a helmet is based on a combination of three factors: outer shell size, inner eps thickness, and interior component thickness. The fit of the helmet can be customized by replacing your existing cheekpads with thinner cheekpads (for a looser fit), or thicker cheekpads (for a tighter fit). To order replacement interior components visit your local dealer or [www.rideicon.com](http://www.rideicon.com).

**HYDRADRY™**  
PERFORMANCE WICKING TEXTILE

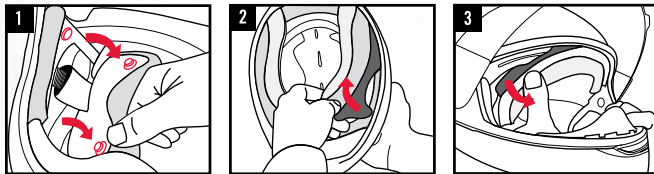


HELMET SHELL SIZE	XS	S	M	L	XL	XXL	XXXL
CHEEK PAD SIZE <small>SEE YOUR LOCAL DEALER FOR ORDERING.</small>	40 mm	35 mm	30 mm	25 mm	25 mm	20 mm	15 mm
COMFORT LINER SIZE <small>SEE YOUR LOCAL DEALER FOR ORDERING.</small>	15 mm	12 mm	15 mm	12 mm	12 mm	9 mm	7 mm

\*PLEASE NOTE: YOUR HELMET SHELL SIZE CAN BE FOUND BY FOLLOWING THE STEPS ON PAGE 4

## COMFORT LINER REMOVAL

How to remove your interior for cleaning or replacement:



1. Release each cheekpad from the helmet by pulling inward, freeing it from the attachment system.
2. Flip your helmet over and pull on the cheekpad. Note how the cheekpad plate slips between the helmet shell and EPS liner for reassembly.
3. Remove your comfort liner by releasing it from the two snap system on the back of the helmet. Then remove the crown comfort liner attachment point, taking note of how the crown plate attachment slips into place between the shell and EPS liner.

## **ALLIANCE VENTING**

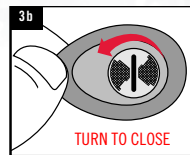
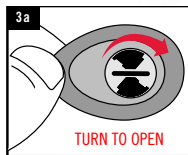
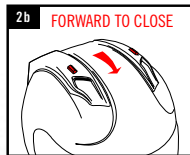
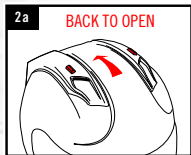
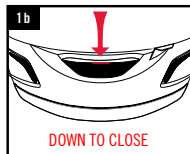
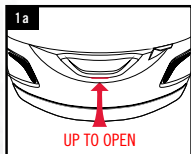
The Alliance helmet's ventilation system consist of strategically placed air intakes, vents, air channels, and exhaust ports. The main ingredient in venting the Alliance is the Icon Supervernt system featuring oversized intake ports controlled by individual vent triggers, along with recessed supervernts to reduce wind noise. When activated, air is forced directly into the helmet, at both high and low speeds. Air is channeled between the comfort liner and protective EPS liner, expelling through the exhaust ports for maximum comfort.



# ***SUPERVENT SYSTEM***

To activate the supervent system simply slide the vent triggers shown in Fig #2a to the back position. To activate the center mouth vent in Fig #1a, flip the vent open by pushing up on the vent trigger.

Fine tuning of airflow into the helmet is handled by the mouth vent, internal chin bar airports, and side vent exhaust holes. Represented in Fig #3a & 3b.



## **CARE AND CLEANING**

Let's face it, Icon helmets look cool and you want to keep them that way. We've found the following methods work really well to keep our helmets looking sharp and ready to roll. Remember, never use gas, pre-mix, carb cleaner, brake cleaner or any other random unlabeled spray can lying around the garage. Chemicals and harsh solvents can break down the materials in your helmet; it's like using brake cleaner to polish your plastics—don't do it!

### **INTERIOR CLEANING**

1. Remove interior lining as shown on page 10.
2. Soak your interior in a mild solution of baby shampoo.
3. Rinse in clean water several times until all soap is gone.
4. Let interior air dry and replace accordingly.

\* Never machine wash or dry your helmet interior.

### **EXTERIOR CLEANING (GLOSS HELMETS)**

1. Lay a warm wet, cloth towel on the exterior of the helmet for at least 5 minutes to soften dried on bugs. (Don't skip this step!)
2. Using a fresh, wet, clean cloth and mild dish soap wipe down the exterior to get rid of road grime and softened bug guts.
3. Use another fresh dry cloth towel to dry the helmet and get rid of any water spots.

### **EXTERIOR CLEANING (RUBATONE HELMETS)**

1. Lay a warm, wet, cloth towel on the exterior of the helmet for at least 5 minutes to soften dried on bugs.
2. Remove the now softened bugs and road grime with a light blotting action. For this use the soft part of your helmet bag provided or a clean microfiber cloth.

\* Never rub aggressively with anything on the Rubatone or you can ruin the finish.

### **EXTERIOR POLISHING**

1. For gloss helmet finishes, use spray automotive wax that is specifically designed for cars with a clear coat. (Available at any automotive store.)
2. For matte finishes, you know better than to polish a matte finish don't you?

### **STORAGE**

It is a good idea to protect your helmet if it is stored for a period of time. Store your helmet inside the helmet bag we have provided in a secure, dry place out of direct exposure to sunlight.

### **SHIELD CLEANING**

Your helmet is equipped with a scratch resistant fog free shield. Common household cleaners such as Windex® and Pledge® can leave behind unwanted residues, or in some extreme cases damage the shield itself. It is our recommendation the same steps outlined above for cleaning the exterior of your helmet should be applied to cleaning the exterior of your shield. Use no cleaners or detergents on the inside of your shield. Using anything other than a clean soft cloth, micro fiber cloth, or the bag supplied with your helmet, will ruin or reduce the effectiveness of the fog free coating.

## **ADVISORY**

Although your helmet is solid and very well constructed, it should be handled with care, dropping a helmet on the ground, or other hard surfaces may eventually degrade the helmet's performance. Additionally, if the helmet falls to the ground at highway speeds unoccupied, the owner must be aware that some unseen damage may have occurred.

### **ICON RECOMMENDATION**

ICON Motosports advises that if you are participating in an activity that requires you to wear a helmet, it is strongly recommended that you avoid hitting anything with your head. If you suspect your helmet has been compromised, or the helmet has been involved in an impact while in use, replace it.



DO NOT REST YOUR HELMET ON THE GAS TANK. GAS VAPORS CAN DESTROY THE HELMET'S IMPACT-ABSORBING LINER.

## ***REPLACEMENT RECOMMENDATION***

The five year replacement recommendation is based on a consensus of all helmet manufacturers, which certifies all Icon helmets. Glues, resins and other materials used in helmet production can effect liner materials over time. Hair oils, body fluids and cosmetics, as well as normal "wear and tear" also contribute to helmet degradation. Additionally, petroleum based products present in cleaners, paints, fuels, and other commonly encountered materials may break down materials used in many helmets, possibly compromising performance. Experience indicates that helmet standards are revised every five years. This, coupled with advances in materials, designs, and production methods suggest that it is in the riders best interest to replace his/her helmet at a minimum of every five years.



ICON IS A REGISTERED TRADEMARK. ALL RIGHTS RESERVED. COPYRIGHT© 2010 LEMANS CORPORATION.  
REPLACEMENT PARTS AND SPECIFICATIONS SUBJECT TO CHANGE WITHOUT NOTICE. PRINTED IN KOREA

J-Tech Corp. Made in China REV000ECE/DOT